

# TEMPO™ FLAT PANEL IN-WALL MOUNT SYSTEM

This all-in-one low-profile wall mounting system supports extra large displays and provides ample storage behind the display for small devices. UL listed for installation in both wood and steel stud construction, this configurable system is designed to improve efficiency by streamlining installation workflow. AV professionals can increase productivity and add money to the bottom line with this new system, especially for mass rollouts. Tempo In-Wall Mount System (FPIWMS) is thoughtfully designed with feedback from installers for faster deployments.

Contractors can install in-wall boxes with stud tabs kit (FPIWMKIT1) during the rough-in construction phase. The wall mount kit (FPIWMKIT2) can be ordered separately and delivered after wall finishing is complete to add flanges, display mount and small-device storage plates. To simplify ordering for projects requiring both kits, the Tempo In-Wall Mount System (FPIWMS) includes both in a single box.

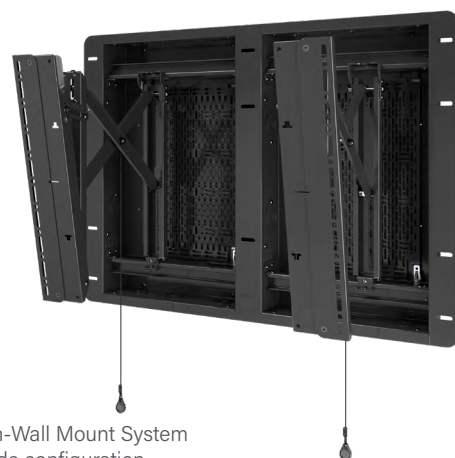
The Tempo™ Flat Panel In-Wall Mount System ships with two 15"x10" Lever Lock™ plates, offering a minimum clearance for 1 RU of AV equipment. Place small devices where you need them thanks to lateral shift flexibility within the storage boxes. Lever Lock plates are compatible with Middle Atlantic® Forward Small Device Mounting Clamps to quickly secure devices in place.



FPIWMS  
Tempo Flat Panel In-Wall Mount  
System shown in skip bay  
configuration



FPIWMKIT1  
Tempo In-Wall Boxes and Stud Tabs Kit  
shown in side by side configuration



FPIWMS  
Tempo Flat Panel In-Wall Mount System  
shown in side by side configuration

# TEMPO™ FLAT PANEL IN-WALL MOUNT SYSTEM

## Save studs, save time!

There's no need to cut wall studs to accommodate flat panel VESA patterns because the mount supports 65"+ displays and are weight-rated up to 250 pounds (113 kg), covering in-wall boxes.

- UL Listing approved for steel and wood stud installations.
- Add as many storage boxes as needed (FPIWSBX) to store small devices.
- Easily align mount & display with single or double drywall construction.
  - Minimum drywall thickness: 1/2" (11 mm)
  - Maximum drywall thickness is 1-1/4" (34 mm)



**FPIWMS**  
Tempo Flat Panel In-Wall Mount System with storage boxes installed in split bays with ultrawide display

## Infinite-width mounting patterns!

An infinite number of horizontal mounting patterns are compatible with the system to support extra-large and some ultrawide displays because in-wall mounting boxes can be set as far apart as needed to align the flat panel with the mount. Mounting patterns can extend up to 650 mm tall with the [FHB5174](#) adapter bracket (sold separately).

## Industry-leading features!

Three types of knockouts per box offer flexibility in vertical and horizontal cabling between storage boxes, giving total control over power and data design.

- Side wall knockouts accommodate four different trade conduit sizes: 1.5", 1.25", 1" and 0.5"
- Top (3) & Bottom (3) knockouts: - 1.25", 1" and 0.5" per box
- Single-gang electrical box: one bottom, one top per box

## Unparalleled Service Access

Enhanced service access to small devices and AV storage system behind the display by extending mount interfaces up to 10.65" off the wall. The flat panel can also be tilted in a variety of positions (0°, 2.5°, 5°, 7.5°, 10°) to eliminate screen glare and reflections. When tilt is combined with depth adjustment, the bottom of large displays won't hit the wall.



Tempo In-Wall Mount System offers enhanced service access and five tilt positions.

# TEMPO™ FLAT PANEL IN-WALL MOUNT SYSTEM

Storage and mount components can be ordered together or separately for installation flexibility.



**FPIWMKIT1**  
(Pre-Drywall Kit)

**TEMPO IN-WALL BOXES AND STUD TABS KIT**  
Pre-drywall box installation kit. Installed during the rough-in construction phase, so electricians can run power and conduit before drywall and finishing is complete. Boxes have tabs so they can be secured to 16" On Center steel or wood studs without wood blocking or special framing.



**FPIWSBX**  
(AV Storage In-Wall Box)

**TEMPO IN-WALL AV STORAGE BOX - 14" X 23"**  
This SKU is a stand-alone box for power installation and accessory storage.



**FPIWMKIT2**  
(Install and Commission Kit)

**TEMPO IN-WALL FLANGE-MOUNT-STORAGE KIT**  
Finishing kit after FPIWMKIT1. Install after drywall and paint is done to complete display. Includes structural flanges, rails, display interfaces, and Lever Lock plates.



**FPIWMS**  
(All-In-One Mounting System)

**TEMPO IN-WALL MOUNT SYSTEM**  
This all-in-one kit includes both the pre-drywall box installation kit (FPIWMKIT1) and the finishing kit (FPIWMKIT2).

# TEMPO™ FLAT PANEL IN-WALL MOUNT SYSTEM

Part Number	FPIWMS	FPIWMKIT1	FPIWMKIT2	FPIWSBX
<b>Description</b>	TEMPO FP IN-WALL MOUNT SYSTEM	TEMPO IN-WALL BOXES AND STUD TABS KIT	TEMPO IN-WALL FLANGE-MOUNT STORAGE KIT	TEMPO IN-WALL AV STORAGE BOX, 14" x 23"
<b>Pre-Requisites</b>	NONE	FPIWMKIT2 MUST BE ORDERED SEPARATELY	FPIWMKIT1 MUST BE ORDERED SEPARATELY	NONE
<b>Typical Display Size</b>	65"+			
<b>Display Orientation</b>	Landscape / Portrait			
<b>Display Mounting Pattern (Landscape)</b>	Min. 200 x 100 mm / Max.* 1500 x 450mm (650mm height possible with use of FHB5174 adapter bracket)			
<b>Weight Capacity</b>	250 lbs (113.4 kg) when installing to 20 gage structural steel or wood studs 200 lbs (90.7 kg) when installing to 25 gage steel studs			
<b>Wall Substrates</b>	16" O.C. 20 ga or 25 ga minimum steel or wood stud wall covered with drywall having a maximum thickness of 1-1/4" and minimum of 1/2"			
<b>Interface Height Adjust</b>	± 0.50 inches (12.7 mm)	NA	± 0.50 inches (12.7 mm)	
<b>Lateral Shift</b>	Yes, display mounting interfaces can travel the width of the in-wall back box			
<b>Tilt</b>	-10° / +0°, 2.5° increments			
<b>Service Extension</b>	10.65" (271 mm)			
<b>Storage Weight Capacity</b>	40 lbs (18.14 kg): 20 lbs (9 kg) per Lever Lock plate			20 lbs (9 kg)
<b>Storage Details</b>	Two (2) Lever Lock plates included			One (1) 15" x 10" Lever Lock plate included
<b>In-Wall Back Box Knock-Outs</b>	<ul style="list-style-type: none"> <li>(12) top/bottom concentric trade conduit size 1/2", 1", 1-1/4"</li> <li>(4) top/bottom single duplex electrical box</li> <li>(8) left/right concentric trade conduit size 1/2", 1", 1-1/4", 1-1/2"</li> </ul>		NA	<ul style="list-style-type: none"> <li>(6) top/bottom concentric trade conduit size 1.25", 1" and 0.5"</li> <li>(2) top/bottom single duplex electrical box</li> <li>(4) left/right concentric trade conduit size 1.5", 1.25", 1" and 0.5"</li> </ul>
<b>Certifications</b>	NA*	UL 2442	UL 2442	UL 2416
<b>ADA Compliance</b>	Facilitates ADA compliance when displays are 3.5 inches or less in depth.			

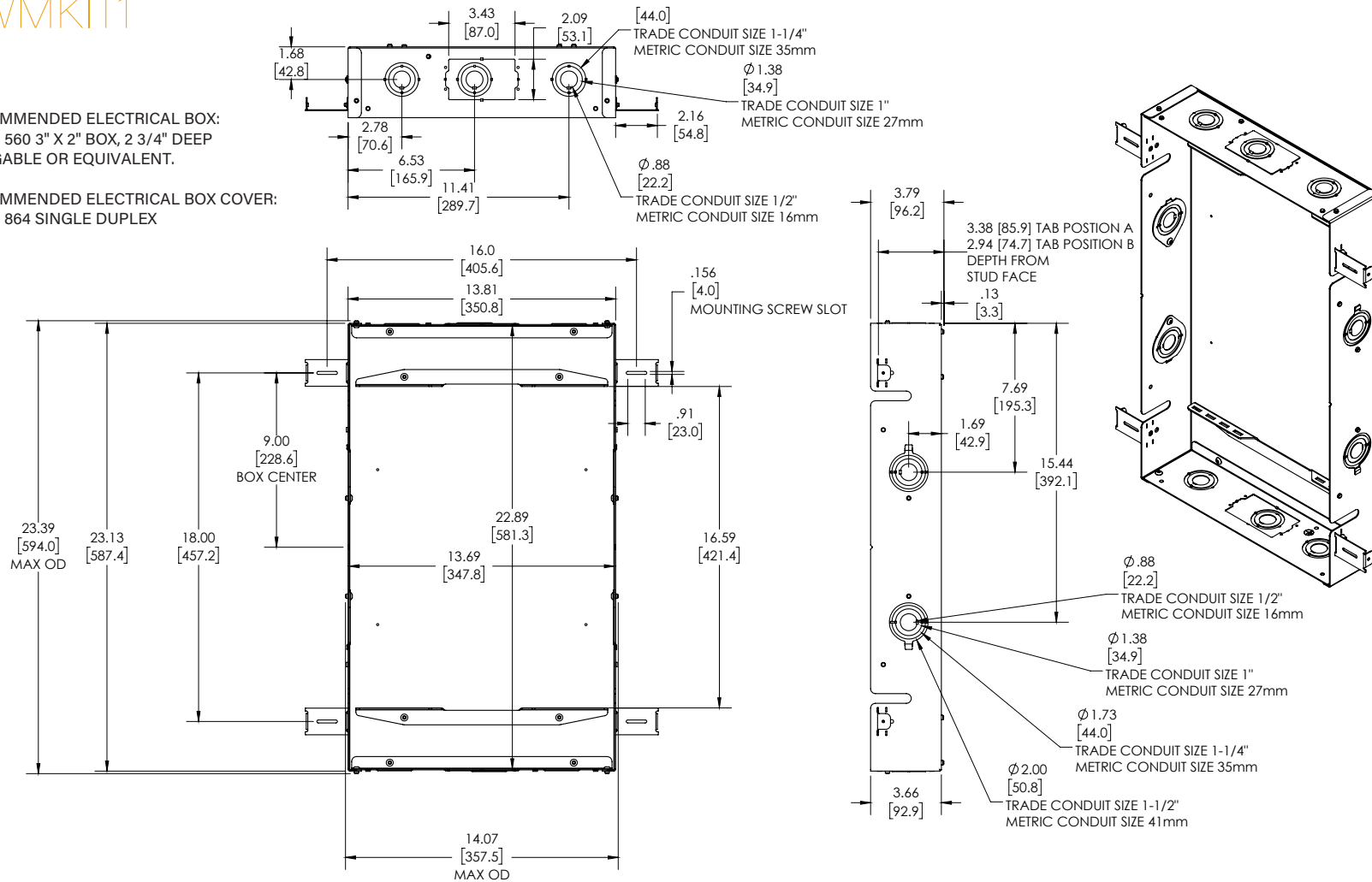
\*NOTE: FPIWMS includes both FPIWMKIT1 and FPIWMKIT2 which are both UL listed. FPIWMS is not found on UL file however.

# TEMPO™ FLAT PANEL IN-WALL MOUNT SYSTEM

## FPIWMKIT1

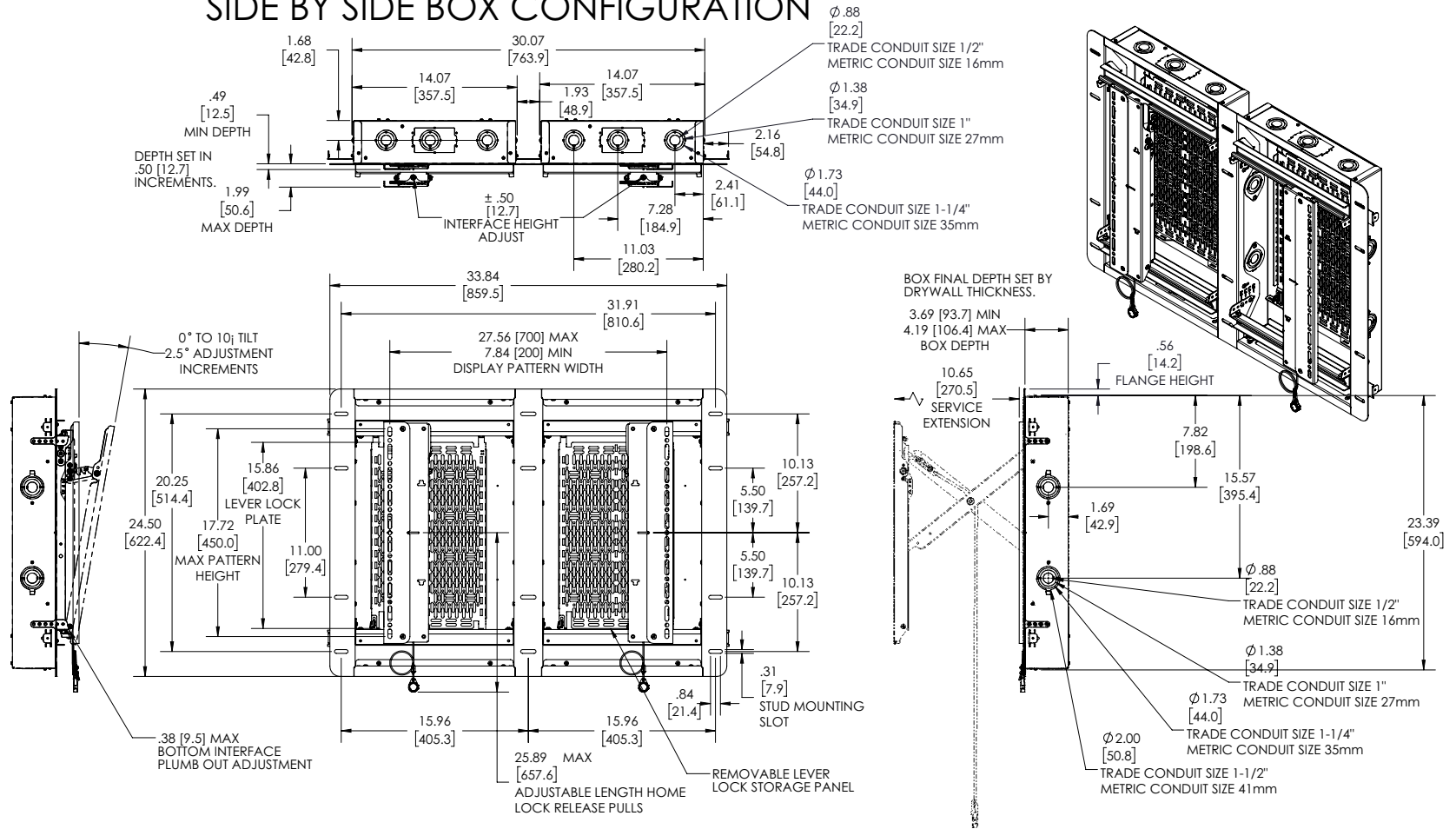
RECOMMENDED ELECTRICAL BOX:  
RACO 560 3" X 2" BOX, 2 3/4" DEEP  
GANGABLE OR EQUIVALENT.

RECOMMENDED ELECTRICAL BOX COVER:  
RACO 864 SINGLE DUPLEX



# TEMPO™ FLAT PANEL IN-WALL MOUNT SYSTEM FPIWMS

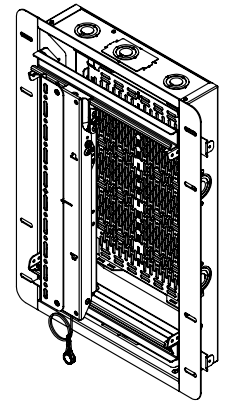
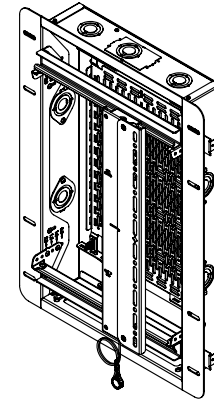
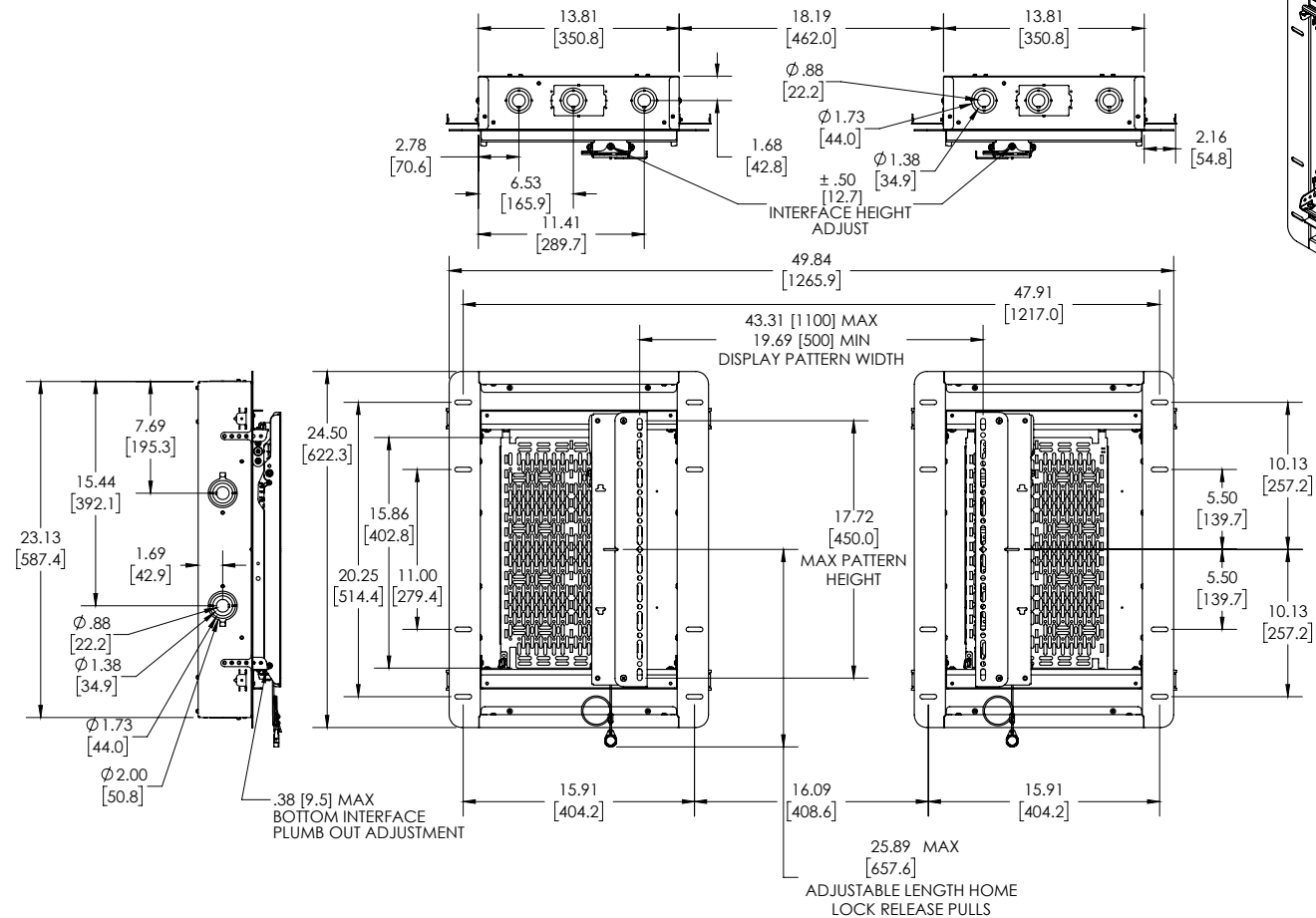
## SIDE BY SIDE BOX CONFIGURATION



# TEMPO™ FLAT PANEL IN-WALL MOUNT SYSTEM

FPIWMS

## SPLIT BOX CONFIGURATION



# TEMPO™ FLAT PANEL IN-WALL MOUNT SYSTEM

## FPIWSBX

