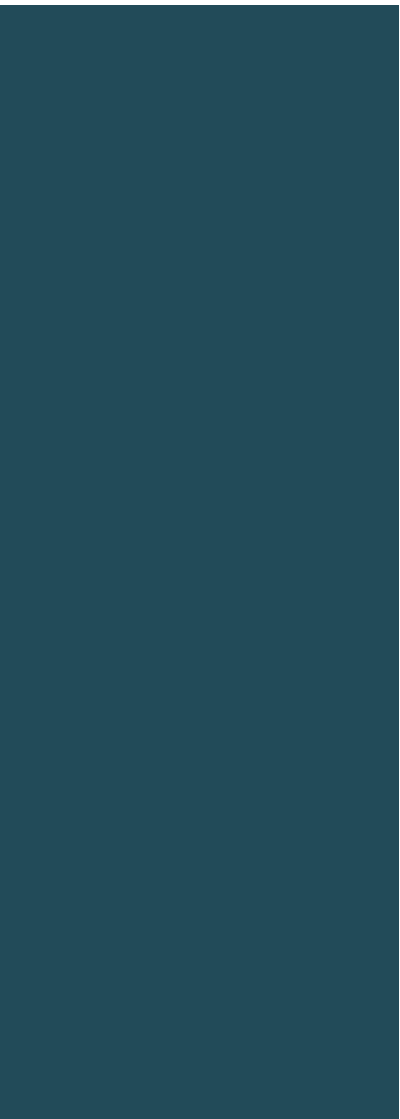


amazing av experiences

2024 SPOTLIGHT PRODUCTS

C2G | CHIEF | DA-LITE | LUXUL | MIDDLE ATLANTIC | VADDIO



amazing av



WITH LEGRAND | AV

Legrand is the global specialist in electrical and digital building infrastructures. Its comprehensive offering of solutions for commercial, industrial and residential markets makes it a benchmark for customers worldwide.

In the AV space, Legrand | AV offers an extended portfolio of branded audiovisual products including flat panel mounting solutions, projector mounts, projection screens, switches, routers, cabling and connectivity, equipment racks, PTZ cameras and furniture for Commercial AV markets.

Its innovative products are sold under the C2G, Chief, Da-Lite, Luxul, Middle Atlantic, and Vaddio brand names.

All brands work together to provide a breadth of product, strength of longevity, and advantage of superior customer service and support.

C2G

C2G simplifies Audio-Video and IT connectivity for commercial applications. Our solutions are innovatively designed to provide the critical features needed for the space they occupy in corporate, education, healthcare, government and other crucial environments.

LUXUL

Luxul is the leading innovator of simple-to-deploy, professional-grade IP networking solutions for use by custom installation professionals. Designed for use in both residential and commercial environments, the Luxul family offers a complete line of solutions that simplify network design and deployment.

CHIEF

Chief has an extensive portfolio of inspired solutions for flat panel displays, projectors, desktop monitors and other AV components. Through deep customer and end-user empathy, Chief continually strives to create amazing technology experiences.

MIDDLE ATLANTIC

Middle Atlantic offers innovative system enclosures, tech-enabled furniture, power products for complete and unmatched AV system support and protection.

DA-LITE

For over 100 years, Da-Lite has been designing, manufacturing and marketing the most comprehensive line of projection screens in the world. Today, we offer our widest selection ever of proprietary projection screen surfaces and materials in our history.

VADDIO

Vaddio manufactures professional quality PTZ cameras, Pro AV solutions, a full suite of Unified Communication and Collaboration systems. Combining enterprise class performance and industry leading support, Vaddio products enhance any AV experience by elevating the science of communication with The Art of Easy.



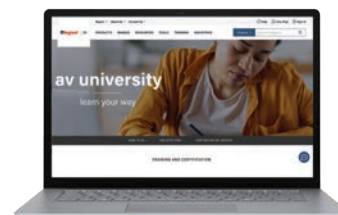
av university

ONLINE TRAINING COURSES

AV University is home to Chief, Da-Lite, Middle Atlantic and Vaddio training courses. All courses are free and many offer CTS Renewal Unit credits. Our wide variety of course options include product certifications, installation tips & tricks, how-to-videos, application specifics, general industry knowledge and much more.

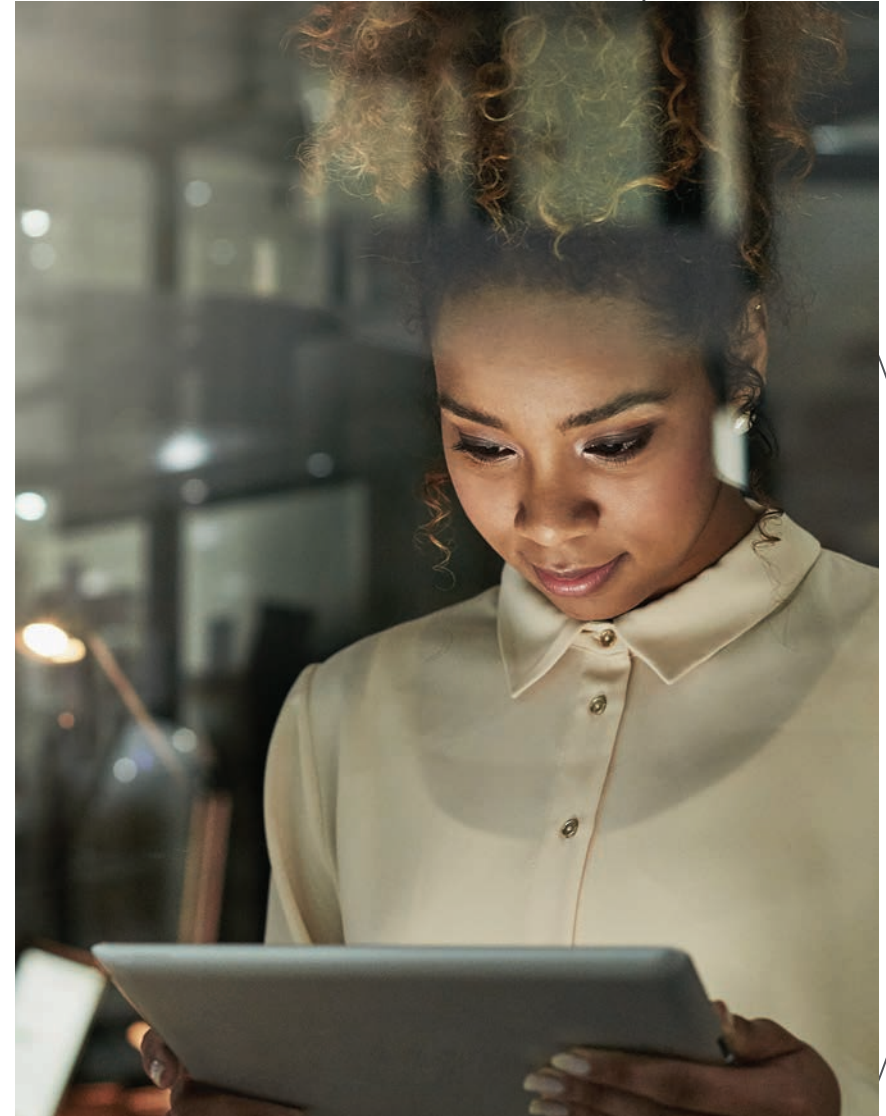
The program allows you to pick and choose your courses to help you create exceptional AV experiences every day. You can learn on your own time, at your own pace.

TO REGISTER FOR COURSES GO TO:
www.legrandav.com/training



CONNECTIVITY FOR ALL YOUR AV NEEDS

C2G is a leading manufacturer of Audio-Video and IT connectivity solutions. C2G works to provide its customers with the products, tools and resources to get connected quickly and efficiently.





HDMI HDBASET + USB-B TO A + RS232 OVER CAT EXTENDER BOX TX TO BOX RX (18GBPS) 4K 60HZ UP TO 100M

An ideal solution where USB must also be extended alongside HDMI video and audio to interactive whiteboards and displays or in any installation that goes far beyond the length limitations of standard HDMI and USB cabling.

- Supports the HDMI 2.0 (18Gbps) specification, with full uncompressed 4K 60Hz (4:4:4) HDMI video and all audio formats through a single, at the full 100m without signal degradation, over a single Cat6a Ethernet cable
- USB ports support USB 2.0 standards, maximizing streaming cameras, connected peripherals, and data rates of 350Mbps
- The Ethernet pass-through transmits 1GB of data

C2G30055



1-PORT USB-C® EXTENDER TRANSMITTER TO RECEIVER KIT - USB 3.2 GEN 1 (5GBPS)

A perfect solution for classrooms, conference rooms, and huddle spaces needing an innovatively simple yet powerful solution for extending USB signals beyond their native 5m length limitation.

- Supports USB 3.2 Gen 1 data rates up to 5Gbps, which means faster data transfers
- Supports all USB 3.2, 2.0, and 1.1 devices simultaneously at full bandwidth
- USB-C port connectivity
- Bus-powered with optional 5V 3A DC input (not included)
- True plug and play; no software drivers required

C2G54278



UNIVERSAL 4K HDMI® DONGLE ADAPTER RING WITH COLOR CODED MINI DISPLAYPORT™, DISPLAYPORT, AND USB-C®

- Adapters support up to a 4K video resolution, so meeting attendees will be able to see the displayed content for improved comprehension and detailed decision making
- Dongle style adapter, allowing for more flexibility when connecting to a laptop or tablet
- Adapters are color coded, so no more frustration trying to find the adapter that you typically use for your laptop
- Integrated pull tab, so the adapters can be accessed quickly or easily reached when they are tucked away
- Installation tools are included, so you save time and money by not needing to purchase any additional tools

C2G30028



CONFERENCE ROOM VIDEO HUB-USB-C® AND HDMI®

The Conference Room Video Hub is the perfect addition to display and share 4K content in conference rooms and huddle spaces, allowing multiple users to connect and switch between their laptops and tablets – all over a single HDMI cable connected to the display.

- Connections support up to a 4K 60Hz 4:4:4 video resolution.
- Plug-and-play, no drivers or apps needed for you to connect
- CEC control connects the video hub to the correct TV input
- HDMI and USB-C cable included, so you don't have to wait for your additional cables to arrive

84310



USB-C® 10-IN-1 TRIPLE DISPLAY DOCKING STATION WITH HDMI®, DISPLAYPORT™, VGA, ETHERNET, USB, SD CARD READER, 3.5MM AUDIO AND POWER DELIVERY UP TO 100W - 4K 30HZ

- Supports up to 100W of power delivery to keep your laptop charged
- Single display setup with HDMI or DisplayPort, supporting resolutions up to 4K, for viewing your screen content at full HD
- Single display with VGA, supporting resolutions up to 1080p
- Dual display setup, with any combo of HDMI, DisplayPort, or VGA, supporting resolutions up to 1080p
- Triple display setup, with HDMI, DisplayPort, and VGA, supporting resolutions up to 720p

C2G54542



THUNDERBOLT™ 4 USB-C® CABLE (40GBPS)

- Supports a top data transfer speed of 40Gbps when connected to Thunderbolt 3 or Thunderbolt 4 devices
- Supports a single 8K 60Hz display or two 4K 60Hz displays
- Supports all 'Alt' mode features outputting full DisplayPort, including multi-streaming
- Capable of charging up to 100 watts and syncing USB-C mobile devices
- Backward compatible with Thunderbolt 3, USB 3.2, 3.0, and 2.0
- Thunderbolt Networking allows 10Gb Ethernet connection or peer-to-peer networking between two computers

C2G28886



USB-C® 7-IN-1 DUAL DISPLAY MST DOCKING STATION WITH HDMI®, DISPLAYPORT™, ETHERNET, USB, AND POWER DELIVERY UP TO 100W - 4K 60HZ

- Supports up to 100W of power delivery to keep your laptop charged
- Multi-Stream Transport (MST) allows two different display configurations on dual monitors
- Supports resolutions up to 4K, for viewing your screen content at full HD
- Supports dual display resolutions up to 1080p
- USB-A and USB-C ports for fast data transferring
- Hard wired Ethernet port for when security requires it or when WiFi™ is not available
- Storage compartment for included USB-C M/M cable, readily available when you need it

C2G54543



PERFORMANCE SERIES PREMIUM HIGH SPEED HDMI® CABLE - 4K 60HZ IN-WALL, CMG (FT4) RATED

Tested to conform with the Premium HDMI Cable Certification Program for highest performance and ultra-reliability.

- Supports all HDMI 2.0 features including resolutions up to 4K (4096 x 2160) at 60hz 4:4:4, which means higher quality video for viewing your screen content
- In-wall (CMG/FT4) rated jacket, so you can safely run the cable inside of a wall and have a clutter free, clean look
- Integrated finger grips on the connectors for easy insertion and removal
- Gripping connector shell for 2x greater port retention
- Gold plated connectors for increased electrical conductivity and enhanced durability

50181



**USB-C® MALE TO USB-C MALE
CABLE (20V 5A) - USB4® (40GBPS)**

This USB4 USB-C Cable brings lightning-speed data transfers, up to 8K video support, and power delivery up to 100W – perfect for connecting USB4 enabled devices for fast charging and quick data transfers.

- Supports all USB4 features, including data transfer rates up to 40Gbps
- Backward compatible with USB 3.2, USB 2.0 & Thunderbolt 3 specifications and devices
- Supports power delivery of up to 100W
- Cable jacket and housing made of TPE, an eco-friendlier alternative to PVC

C2G28878



**DISPLAYPORT CABLE WITH LATCHES
8K UHD M/M**

- Directly connect a DisplayPort output to a DisplayPort input
- Carries a digital audio/video signal
- Supports a High Bit Rate (HBR) bandwidth and resolutions up to 8K UHD (7680 x 4320)
- Connectors features latches which secure the cable in the port
- Cable meets the requirements of high performance applications

54400

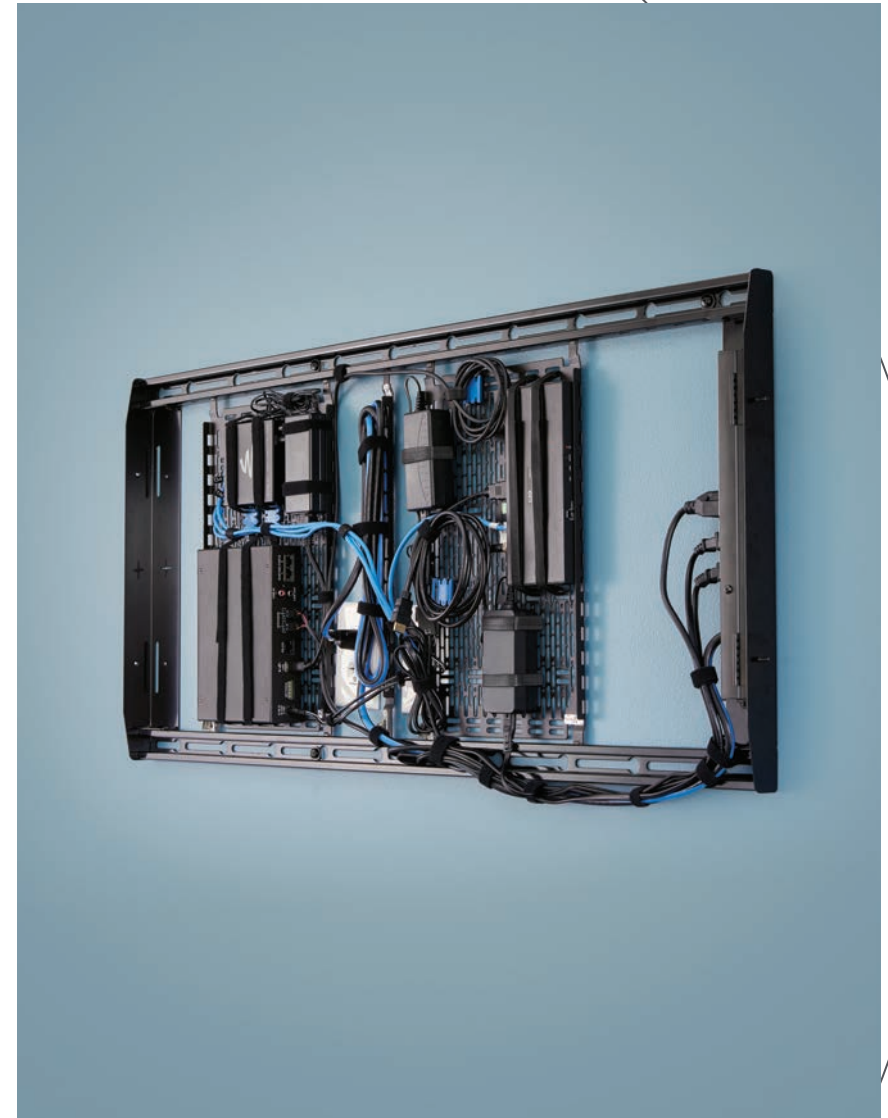
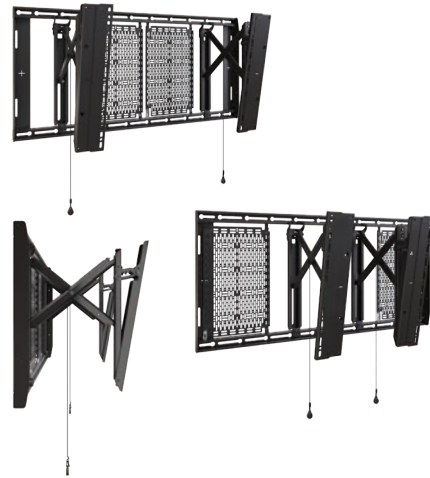
TEMPO™ FLAT PANEL WALL MOUNT SYSTEM

This all-in-one configurable wall mounting system is designed to improve efficiency by streamlining installation workflow.

ONE PART NUMBER. ONE BOX. ONE ORDER.

- Flexible placement of outlets and AV equipment neatly stored behind displays up to 86"
- Ships with two Lever Lock™ storage plates for toolless storage of AV equipment
- 320 mm of pull-out service access
- 25 mm of post-install display level adjust
- Combine with Middle Atlantic 4 outlet PDU 646800 (French Standard) or 646801 (German Standard) that fits perfectly into the AS3LD

AS3LD - Tempo Flat Panel Wall Mount System





IMPACT™ LANDSCAPE ON-WALL KIOSK

The Impact™ On-Wall Kiosk brings new flexibility to the digital signage enclosure market while maintaining a sleek aesthetic to complement a variety of environments. A depth-adjustable exterior frame allows for a variety of displays to be used while meeting minimum protrusion depth requirements. The scissor arm design enables 8" (203mm) of extension providing unparalleled service and maintenance access.



IMPACT™ OUTDOOR KIOSK

The Impact™ On-Wall Kiosk brings new flexibility to the digital signage enclosure market while maintaining a sleek aesthetic to complement a variety of environments. A depth-adjustable exterior frame allows for a variety of displays to be used while meeting minimum protrusion depth requirements. The scissor arm design enables 8" (203mm) of extension providing unparalleled service and maintenance access.



IMPACT SERIES WALL MOUNTED KIOSKS

Impact Wall Mounted Kiosk brings a new level of flexibility to the digital signage enclosure market, while maintaining a sleek aesthetic to complement a variety of environments. A depth-adjustable exterior frame keeps the installation under 4" (102 mm) for displays up to 2.75" (70 mm) deep. Reversible hinges help to avoid installation and service obstructions, and our exclusive design keeps the display mounted to the frame when opened, providing unparalleled service and maintenance access. Integrated engagement latches can be secured with tamperproof hardware to protect equipment. Multiple Storage options can be added to mount components in-wall and/or on-wall.



IMPACT SERIES FLOOR MOUNTED KIOSK

Impact™ Floor Mounted Kiosk brings a new level of flexibility to the digital signage enclosure market, providing an aesthetic solution for enclosing displays in open areas. Designed with no exposed fasteners while maintaining full access and serviceability. Our exclusive design keeps the display mounted to the frame when opened. Keyed locking security keeps displays safe, and a universal AV storage plate holds supporting equipment. Single and back-to-back options accommodate displays up to 3.5" (89 mm) thick. Accessories include protective glass, and thermal management options. The optional freestanding base accessory transforms the bolt-down Impact floor kiosk into a freestanding solution.

CHIEF dvLED UNIVERSAL MOUNT

EASY TO SPECIFY
EASY TO ORDER
EASY TO INSTALL

Highly adaptable & stockable

New! Floating button-capture technology
and universal mounting hardware
compatible with most panels currently
on the market.

SCALABLE & VERSATILE

- Accurate alignment of panels to compensate for uneven installation surfaces with 3-axis adjustments (x, y, z-axis)
- Double Depth Adjustment: macro and micro-adjustments create flawlessly flat video walls
- Independent Column Adjustment for perfectly level installations

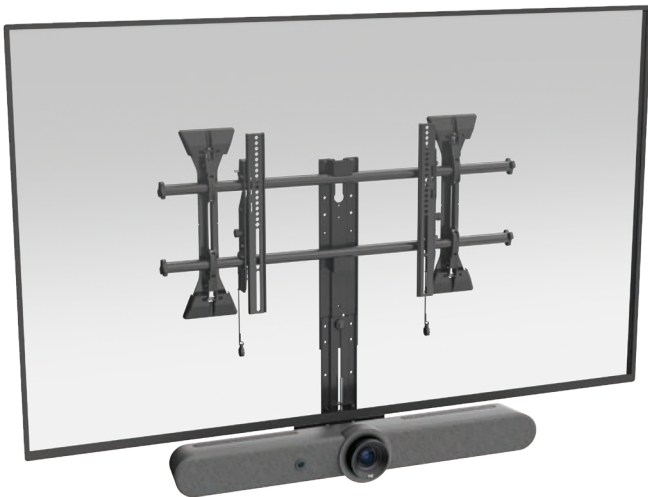




**VOYAGER
AV CART**

Stylish Contemporary design meets robust construction in Chief's newest cart. Voyager is a mobile display solution to support flexible conferencing and collaboration in workspaces and digital signage applications.

Built-in cable management and small device storage create quick and attractive AV installations. Sleek handles and a stylish woodgrain shelf promote accessibility and effortless movement.



**FUSION CAMERA MOUNT FOR
LOGITECH RALLY BAR, MINI AND HUDDLE**

- Fully assembled, quick install, camera mount dedicated for the market leading Logitech Rally Bar.
- Can be mounted above or below 55" to 94" displays.
- Reduce customer facing assembly and minimize hardware and waste.
- Compatible with:
 - Fusion wall mounts
 - Fusion carts & stands
 - Tempo series floor-to-wall support
 - Forum Collaboration Suite

FCALRB1 - Fusion Camera Mount for Logitech Rally Bar, Mini and Huddle

FIT INTERACTIVE DISPLAY CART

The Fit™ Mobile Cart for Interactive Displays is designed for flexibility. The Fit™ Mobile Cart for Interactive Displays is designed for use where users want flexibility to move displays for optimal viewing and collaborative learning.

Height-adjustable shelf is included to store accessories like keyboards, laptops, and styluses.

The Fit Mobile Cart is developed to maintain stability while users interact with touchscreen displays.

- Typical Screen Sizes: 55" to 86"
- Display Mounting Pattern: Up to 800 x 600 mm
- Display Weight Capacity: 79 kg
- Shelf Weight Capacity: 4.5 kg
- Robust casters
- Compact legs enhance safety and maneuverability.
- Built for efficiency, speed and easy movement

RFCUB



**ELECTRIC HEIGHT
ADJUSTABLE MOUNTS**

Chief's line of height adjustable display mounts is expanding to include electric solutions. The new cart, floor-support and wall mounts have higher weight capacities to support larger interactive displays, and also give an option to users who may prefer an electric solution over non-motorized.



**ELECTRIC HEIGHT
ADJUSTABLE MOUNTS - XL**

Weight capacity up to 140 KG

- Mobile Cart - XPD1U- EU
- Floor-to-Wall Stand- XFD1U-EU
- Wall Mounted - XSD1U-EU



**ELECTRIC HEIGHT
ADJUSTABLE MOUNTS - LARGE**

Weight capacity up to 90 KG

- Mobile Cart - LPE1U-EU
- Floor-to-Wall Stand - LFE1U-EU



**DYNAMIC HEIGHT
ADJUSTABLE MOUNTS - LARGE**

Weight capacity 55-82 KG

- Mobile Cart - LPD1U
- Floor-to-Wall Stand - LFD1U
- Wall Mounted - LSD1U



**DYNAMIC HEIGHT
ADJUSTABLE MOUNTS - MEDIUM**

Weight capacity 30-60 KG

- Mobile Cart - MPD1U
- Floor-to-Wall Stand - MFD1U
- Wall Mounted - MSD1U

**LARGE VENUE PROJECTOR
MOUNTS AND ACCESSORIES**

New projector mounts and accessories better align, protect and enhance large venue projection installations. Designed to install quickly while maintaining a sleek aesthetic.



VCT - XL PROJECTOR MOUNT
Weight Capacity: 150 lbs (68 kg)
Micro Roll / Pitch / Yaw: +/-5°, +/-20°, +/-10°
Macro Yaw: 360°



**CMA348 - LARGE VENUE VIBRATION
ISOLATING COUPLER**
Weight Capacity: 35 - 100 lbs (15.87 - 45.4 kg)*
Overall Dimensions: 6 x 23 x 23" (152 x 584 x 584 mm)
Compatibility: Chief CMS Columns (1.5" NPT)



*Capacity must include all components below the coupler: column, projector mount, projector, etc.

CMS380 - Truss Clamp
Weight Capacity: 250 lbs (113.4 kg)



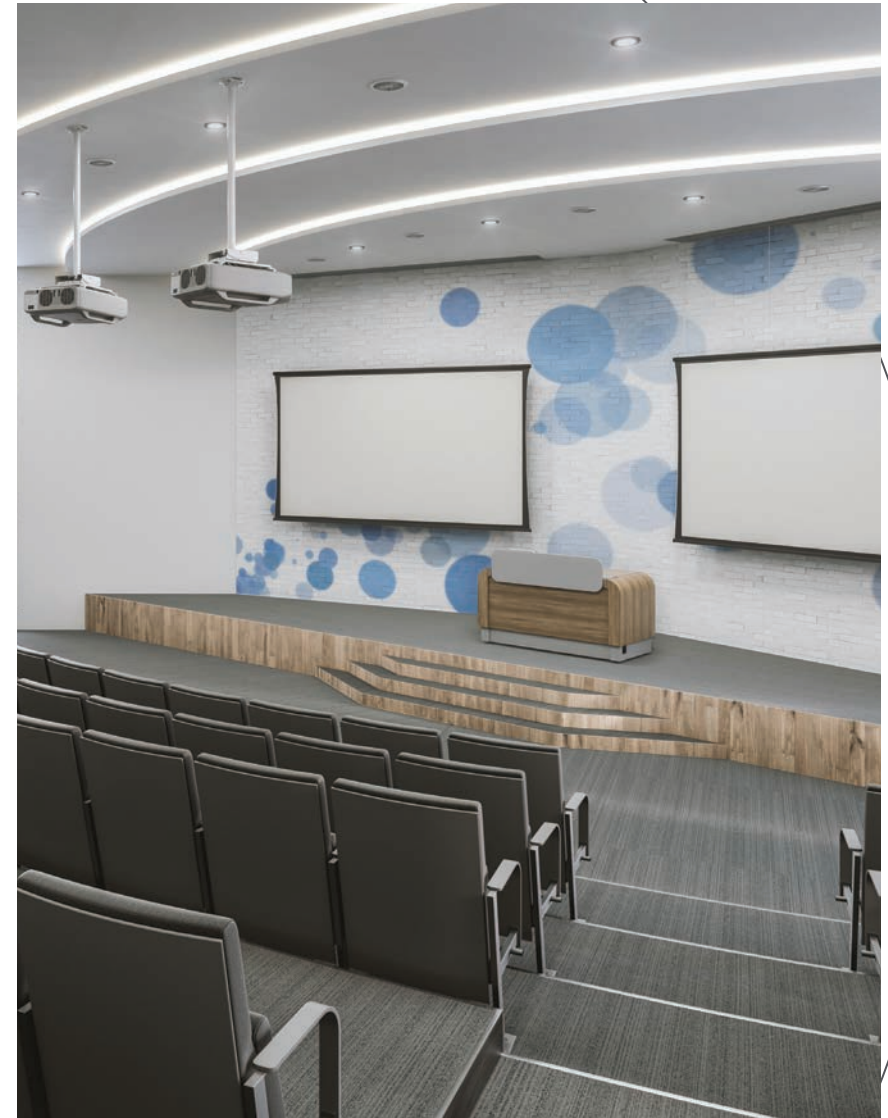


MYRIAD™ FOR ALL THE WAYS YOU PROJECT

Myriad™, an all-new wall and ceiling mounted electric screen system. Available with 500 cm of SightLine™ cable drop, which gives the impression of a floating screen, Myriad is offered in sizes from 4 to 5 meter wide in 16:9 HDTV, 16:10 Wide and 21:9 Ultrawide formats.

Available on all Myriad models, SightLine, Da-Lite's thin cable feature elegantly suspends the screen surface and eliminates the need for black drop - the black border above the projection screen. Specifying drop distance upon ordering is a thing of the past. Now, vertical placement of the screen can be variable as the cables accommodate a range of drop distances up to 5 meter (standard) between the ceiling and the top of the screen - making ordering easy. What's more, this feature creates usable space above the viewing area to preserve architectural interests and provides the opportunity for camera/speaker placement.

A global platform for your global rollouts. It's a whole new generation of screens. Just wait for what's next.





SIGHTLINE CABLE-DROP SYSTEM

SightLine offers a new alternative to the standard black border above the projection area with 3 or 4 thin cables that can be extended up to 180 cm on-site. Need an even longer drop?

Now we have a new option for 300cm cable-drop to install SightLine in even higher applications.

SightLine Cable-Drop System makes sure your view above the projection screens projection area is no longer blocked and gives the impression of a large floating image. Drop the projection screen to the height you need while preserving the look of the room when unrolled, the way the architect intended.

SIGHTLINE IS AVAILABLE WITH THE TENSIONED DESCENDERPRO AND DESCENDERPRO.





TENSIONED DESCENDERPRO

The DescenderPro is a ceiling recessed-projection screen that combines new installation features with a new motorized ALR surface option in addition to the high-resolution HD Progressive materials. Available with SightLine, the new standard in screen-drop.

SightLine offers a new alternative to the standard black border above the projection area with 3 or 4 thin cables that can be extended up to 180 cm on-site. Now your view above the projection screens projection area is no longer blocked and gives the impression of a large floating image. Drop the projection screen to the height you need while preserving the look of the room when unrolled, the way the architect intended.



FULLVISION

A borderless screen with a modern aesthetic that blends into its environment when not in use, FullVision is a fixed frame projection screen that enables the entire surface to be used for projection. Modern and low-profile, FullVision is 16K-ready and future proof with HD Progressive surface options. Aesthetic design for rooms that require the screen to blend into the environment when not in use and deliver the very best in projection when the projector turns on.

16K-READY SURFACE OPTIONS



HD PROGRESSIVE 0.9*
Half Angle: 85°
Viewing Angle: 170°
Gain: 0.9



HD PROGRESSIVE 0.6*
Half Angle: 85°
Viewing Angle: 170°
Gain: 0.6



HD PROGRESSIVE 1.1*
Half Angle: 85°
Viewing Angle: 170°
Gain: 1.1



HD PROGRESSIVE 1.1 CONTRAST*
Half Angle: 60°
Viewing Angle: 120°
Gain: 1.1



HD PROGRESSIVE 1.3^
Half Angle: 75°
Viewing Angle: 150°
Gain: 1.3

* Recommended for laser projection
^ Suitable for laser projection





TENSIONED ELPRO CONCEPT

When the case of the projection screen cannot be installed into the ceiling, offer the elegant, high-end designed Elpro Concept instead. The Tensioned Elpro Concept is available with the latest technology in projection surfaces designed for 4K and Ultra HD to maximize the technology of your projector.

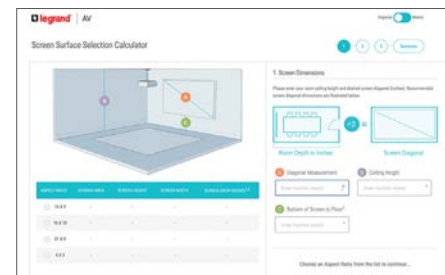
Projecta raises the bar for every wall or ceiling installation. The leaf-shaped case of the Elpro Concept offers a stylish solution for design-sensitive installations.



SCREEN SURFACE SELECTION CALCULATOR

With only a few critical inputs - room size, screen dimensions and projector details, see how these values impact screen surface selection in a specific environment and ultimately, the end users viewing experience when considering Projecta and Da-Lite screen surface technology.

>LEGRANDSCREENCALCULATOR.COM

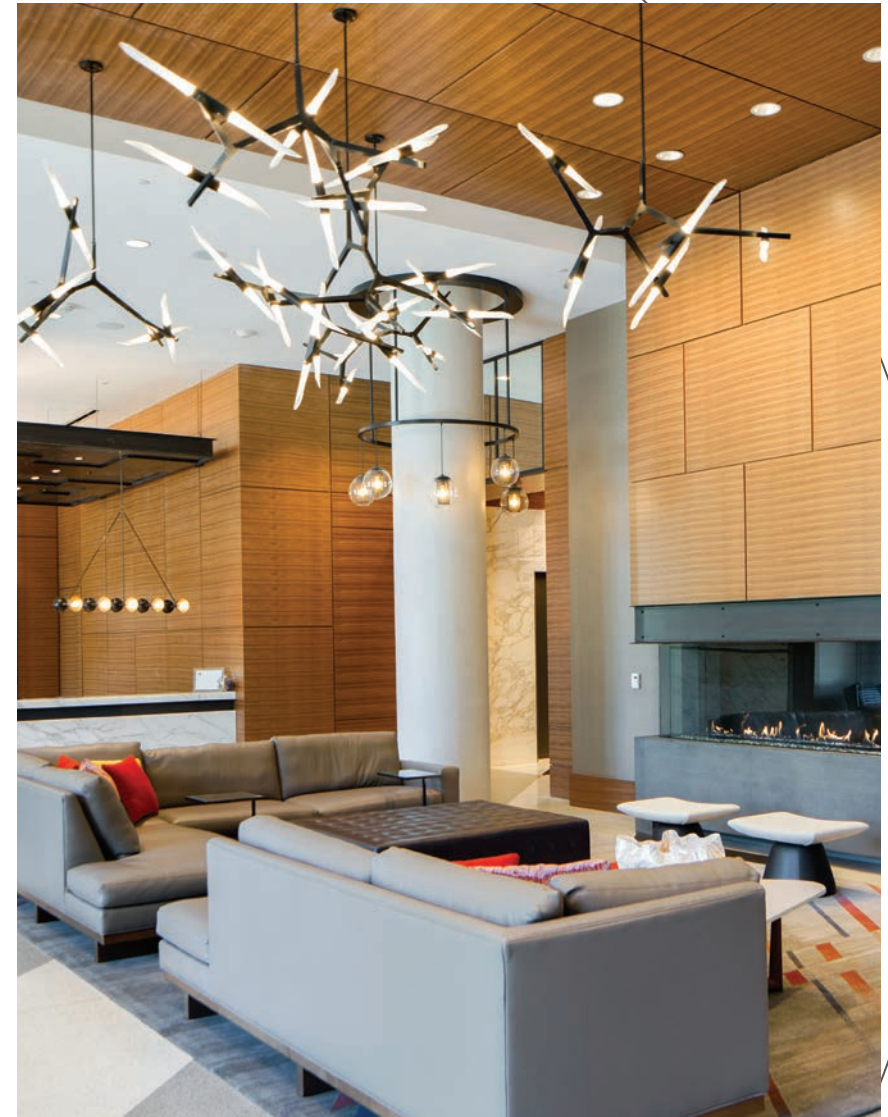


NETWORK SWITCHES FOR THE PRO AV INTEGRATOR

Luxul switches are designed to handle anything from a small conference room to the most demanding AV over IP installations. With a wide variety of switches available, complete with SFP/ SFP+ modules for expansion, you're sure to find a switch that meets the needs of your application.

LUXUL POE AV SWITCHES OFFER THESE BENEFITS:

- AV over IP ready – for easy integration with leading AV over IP systems
- Ideal AV distribution platform for retail, meeting rooms, corporations and campuses
- Generous PoE+ power budgets – 130W to 740W
- Silent operation
- Ports on the back for a clean rack installation
- Self-Healing Capabilities – PoE auto-recovery and power scheduling
- Three year warranty





**8 POE+ | 2 RJ45 | 2 SFP PORTS -
GIGABIT L2/L3 MANAGED SWITCH**

Designed to support AV-over-IP (AVoIP) applications, the SW-505-8P-R includes eight 1-Gigabit PoE+ Ethernet ports, two non-PoE Ethernet Ports, and two 1-Gigabit SFP expansion ports. Two or more SFP ports can be aggregated for a connection speed of up to 2 Gb.

The 8 PoE+ ports deliver both gigabit data and power over a single cable to 802.11af/at-compliant devices, with a maximum of 30W per port. For separately powered devices, these ports deliver network connectivity only. The total power budget is 130W for all PoE+ ports combined.

SW-505-8P-R



**8 POE+ | 2 RJ45 | 2 SFP PORTS -
GIGABIT L2/L3 MANAGED SWITCH**

Designed to support AV-over-IP (AVoIP) applications, the SW-505-8P-F includes eight 1-Gigabit PoE+ Ethernet ports, two non-PoE Ethernet Ports, and two 1-Gigabit SFP expansion ports. Two or more SFP ports can be aggregated for a connection speed of up to 2 Gb.

The 8 PoE+ ports deliver both gigabit data and power over a single cable to 802.11af/at-compliant devices, with a maximum of 30W per port. For separately powered devices, these ports deliver network connectivity only. The total power budget is 130W for all PoE+ ports combined.

SW-505-8P-F



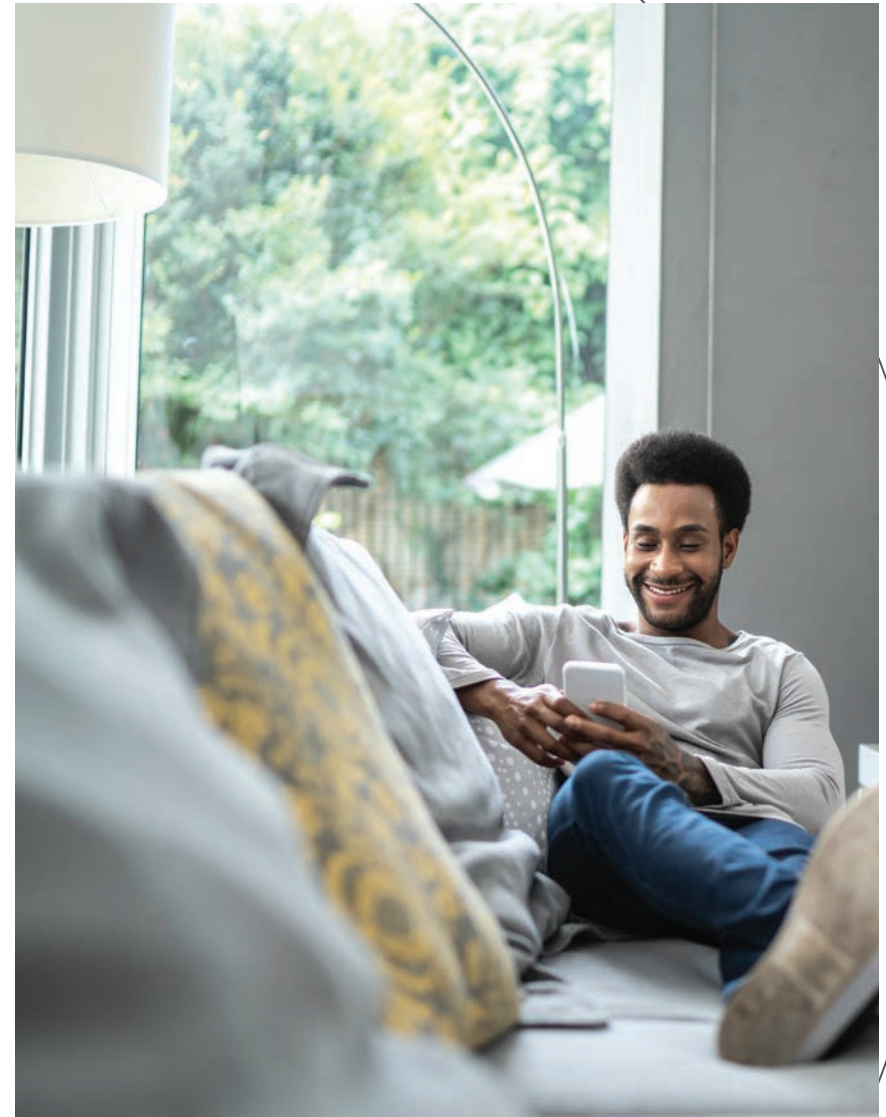
24-PORT GB POE+ L2 L3 MANAGED SWITCH W/ 4 SFP+

The new SW-615-24P-R is a 24 port PoE+ rear facing single space rackmount Gigabit switch with 4 SFP+ 10Gb ports (aggregable up to 40Gbps) and a total PoE power budget of 370W. Each of the SFP+ ports can be used alone or aggregated together to allow 20 or 40Gbps throughput to another switch. This L2/L3 switch with 128Gbps switching capacity provides VLAN, QoS and other powerful management features. Variable speed fans for quiet operation. ProWatch Integrated for support of remote monitoring and management.

- PoE Self-Healing with auto-recovery and power scheduling
- 24 PoE+ Gigabit Ports
- 370 Watt total PoE budget
- Rear-facing ports
- 4 SFP+ Ports
- Aggregable up to 40Gbps
- Rack Mountable



SW-615-24P-R-E





4 PORT / 8 PORT UNMANAGED POE+ SWITCH

The SW-100-04P is a compact Gigabit PoE Plus switch that provides four PoE Plus capable ports of Gb Ethernet connectivity with a total power budget of 58 watts. It is an excellent choice for expanding your network when using PoE-enabled devices such as IP cameras, wireless access points, AV over IP devices, control panels and easily fits into the widest range of environments. The durable metal case includes rubber feet and keyhole features for surface mounting options.

SW-100-04P-E
SW-100-08P-E



5 PORT UNMANAGED POE+ SWITCH WITH POE PASSTHROUGH

The SW-100-05PD is a 5 port PoE Plus powered switch that is powered from a PoE Plus switch or injector powered uplink and provides an additional four ports of Gb Ethernet connectivity.

One of the Gb Ethernet ports allows the powering of a PoE 802.3af device (pass through port) such as a camera, control system interface, or AV over IP receiver. The durable metal enclosure includes detachable wing brackets for mounting and attachable magnet feet for easy mounting to metal surfaces.

SW-100-05PD



forum™

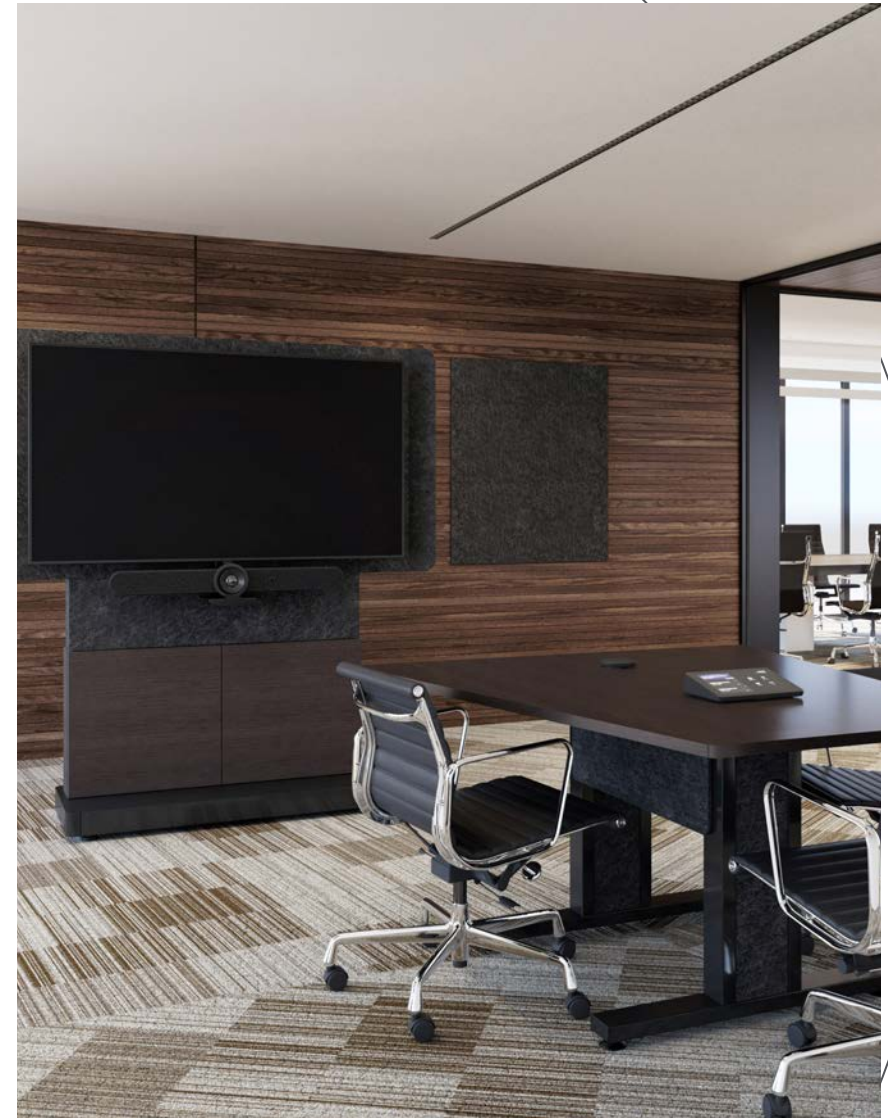
COLLABORATION SUITE

The Forum™ Display Stand is designed for workspaces when hybrid collaboration is necessary in either open or closed spaces. The stylish design is outfitted with a shroud and acoustic fabric to ensure the highest quality audio experience for both in-person and remote audiences in open spaces.

- "I'm not hearing an echo". The upper tower and display shroud are wrapped in acoustic felt material
- Available in Freestanding and Floor-to-Wall version and Light and Dark finishes
- Full Access to Equipment. The access doors on the front of the Display Stand slide open for unimpeded access to equipment
- Integrated Lever Lock™ AV device mounting panels for quick and toolless AV equipment integration
- A wide selection of conferencing table configurations are available with the Forum Collaboration Suite

Now fully compatible for:

- Single displays up to 98"
- Dual displays up to 75"
- Ultrawide 21:9 displays up to 105"



FORUM LECTERN AVAILABLE Q3

Introducing the newest addition to the Forum™ Collaboration Suite, the Forum Lectern!

The Forum Lectern is electrically height adjustable, available in 3 widths (107 cm, 153 cm, and 183 cm), offered in four colorways and has customizable features like logo panels for a perfect fit in your learning spaces. Choose between a flat worksurface or a turret worksurface - which can mount control panel touchscreens. Both surface styles can be equipped with an A.H. Meyer PDU for charging and connectivity and grommets to accommodate monitor arms

For additional worksurface and rack space, add a matching side cart rack that easily connects to the lectern. Available in 12RU, 16RU and 20RU.



SELECT SERIES PDU WITH RACKLINK CE RATED

Monitor your power anytime, anywhere, and even automatically. Select Series PDUs with RackLink™ creates a simple and cost-effective solution that puts intelligent control of power distribution at your fingertips, wherever you are.

The applications are endless - RackLink™ allows you to manage everything from a network of digital signage installs, to a building full of conference rooms, to an entire campus of classrooms - all from your device. Plug it in, feel confident, and simply focus on creating an amazing AV experience.

RackLink is international. CE Rated with IEC outlets.



Select Series PDU with RackLink CE Rated, 2 Outlet
RLNK-210-IEC-NS



Select Series PDU with RackLink CE Rated, 4 Outlet
RLNK-410R-IEC-NS



Select Series PDU with RackLink CE Rated, 9 Outlet
RLNK-910R-IEC-NS

SRSR-4 SERIES SLIDE OUT ROTATING RAIL SYSTEM RACK

Specify an SRSR for easy rear access to equipment connections in millwork, cabinets and flush in-wall installations. Available with a 19" or 23" useable depth, the SRSR system extends and rotates 90° in either direction, making it ideal for smaller systems.

- Removable rack frame allows in-shop integration and on-site installation of equipment
- Locks in the extended position for simplified equipment integration
- Rotating equipment bay locks in place at 0°, 60° and 90° for easy installation and servicing
- Self-centering mounting base makes it simple to align system within cabinet opening
- Rear cable support works in conjunction with rear rackrail for effective cable management
- Standard front & rear 10-32 threaded rackrail with marked spaces



C3 SERIES CREDENZA

The new 25 cm deep, ADA Compliant C3 Credenza series displays modern contrasted finishes, versatile storage options and at 25 cm deep a minimal footprint, perfect underneath displays, in high traffic areas, hallways, and meeting spaces. Middle Atlantic's unmatched Frame to Furniture design process allows for maximum uptime and reliability that gets your AV gear installed and ready to use quickly. With the hallmark Middle Atlantic systems approach, each credenza comes with thermal management built in, making it truly an all in one piece of furniture.

- 1, 2 & 4 bay models in 61 cm or 79 cm heights
- Thermolaminate or high pressure laminate finishes
- Designed to accommodate both rackmount and small device mounting



THERMAL MANAGEMENT

Maintaining the temperature inside racks is critical to the proper functioning and survival of the circuits operating within them. The best way to control this temperature is to take an integrated approach to thermal management.

We are introducing a fully new line-up of Thermal Management products especially designed for EMEA for all uses. The line up consists of Rackmount Blower Kits, Rackmount Fan Trays, Quiet Fans, Fan Tops and separate Fans.





FORWARD - FOR TODAY'S SYSTEMS AT TOMORROW'S SPEED

Enabling 5x faster installation of everyday rack builds so you can focus on what matters – delivering the ultimate AV experience. Redefined Rackrail for the fastest installation now included in all BGR series enclosures. The threaded rail includes a square hole that unlocks the ability for all of our Forward panels, vents and cable management to be clicked in without using ANY rack screws!

ADDITIONAL FORWARD ACCESSORIES INCLUDE:

- Cable Management and Power Bracket Solutions – mount without tools to run cables and mount power strips with ease
- Blank and Vent Panels – achieve optimal rack design in seconds and with no hardware
- Small Device Mounting – allows mounting of small devices without any hardware, zip ties or bubble gum



BGR SERIES

The BGR Series Rack Enclosure delivers the most space efficiency and strength available, plus the latest options for installation flexibility and seamless servicing. With higher weight capacities, more usable rackspace and superior functionality of any other rack system on the market, the BGR Series is the ultimate AV rack.

- All BGRs are now Forward Compatible and are equipped with the revolutionary Forward Rackrail, giving you the ability to use Forward blank panels, vent panels, horizontal cable management and vertical cable management
- More useable height than any rack – 45RU in less overall height than most 44RU racks
- Revolutionary, tool-free Lever Lock™ provides small device mounting 7 cable management without occupying a single RU
- Lightweight design with maximum weight capacity
- Configurable top with generous 53 cm wide opening and vertical cable management entry points
- Accepts brush grommet rear door kit for a large cable passage without fishing
- Problem-solving extender bays available
- Designed with built-in thermal management features

EasyIP ECOSYSTEM

Vaddio EasyIP products are AV-over-IP systems that are easy to use, easy to install, and provide industry-leading video quality. EasyIP saves money because our EasyIP cameras send video over IP, eliminating costly extenders and video switchers, and instead using Cat cables and a network switch.

This cost-effective solution results in faster installation times too, with all components being PoE powered.



EASYIP ECOSYSTEM CONSISTS OF:

- A range of different camera options
- EasyIP Mixer and EasyIP Decoder for connecting your output devices
- TableMIC D and CeilingMIC D Dante microphones
- Dante Ceiling Speaker and Dante Amplifier
- EasyIP optimized PoE+ managed network switches
- EasyIP PCC joystick and Vaddio Device Controller control options
- Conveniently manage your entire installation over the network using the Vaddio Deployment Tool



Videoconferencing with EasyIP is a superior user experience. That's because you can connect up to four EasyIP cameras to your EasyIP Decoder or EasyIP Mixer. Simple control is at your fingertips with the Vaddio Device Controller touch panel. Easily switch camera feeds in your conference room, class room or city council chambers



**EASYIP
30 EPTZ**

The EasyIP version of the popular IntelliSHOT auto-tracking camera 30x zoom, auto framing/tracking and stunning image quality. Great for your medium to large meeting room and lecture capture.



**EASYIP
MIXER**

Ideal for large classrooms and multi-camera applications, the EasyIP Mixer combines Dante audio sources and four Vaddio EasyIP cameras to deliver our easiest production switcher to date.



**EASYIP CEILING
SPEAKER D**

The EasyIP Ceiling Speaker D with Dante networked audio is optimized for easy installation and accurate voice reproduction. Ideal for conference rooms and classrooms.

- Dante networked audio
- 2-way speaker optimized for vocal clarity
- PoE+ powered



**EASYIP
PCC CAMERA CONTROLLER**

Accurately control your EasyIP cameras with this compact joystick controller. Switch between cameras and recall presets from the controller.

The HDMI output displays the video from the current selected camera. Functionality can be extended with the Vaddio Device Controller touchscreen.

Also available as the PCC Mini for controlling RoboSHOT and PrimeSHOT cameras.



**EASYIP 20
CAMERA**

The EasyIP 20 Camera brings professional AV quality performance to the EasyIP Ecosystem, an AV-over-IP solution for lecture capture, remote learning and videoconferencing in large meeting rooms, lecture halls, and houses of worship.

It delivers 1080p/60 resolution feeds to EasyIP endpoints and connects to a 1 GB PoE+ switch – eliminating the need for costly USB extensions. A local HDMI output allows for easy IMAG (image magnification).



**EASYIP 5
EPTZ CAMERA**

The EasyIP 5 ePTZ camera has a wide 100° field of view, making it perfect for an audience overview shot in a larger room or for getting everyone in the frame in small collaboration rooms and huddle spaces.

EasyIP 5 eliminates the need for costly USB extenders by sending 1080p resolution video feeds to EasyIP endpoints over category cables.



INTELLISHOT AUTO-TRACKING CAMERA

The IntelliSHOT® professional camera makes video collaboration and streaming classes easy and effortless. Equipped with advanced IntelliFrame™ technology, the IntelliSHOT ePTZ camera is the only auto-framing device that can be adjusted based on the room conditions and user's preferences.

- Advanced Intelligent Framing algorithms keep your participants in view
- 30x zoom with 70.2 degree field of view
- Simultaneous USB 3.0, HDMI and H.264 IP Streaming (RTSP or RTMP)
- Two integrated beamforming microphones with built-in Acoustic Echo Cancellation (AEC)
- Balanced audio line in and out



INTELLISHOT-M PROFESSIONAL CAMERA

The IntelliSHOT-M is a professional auto-tracking camera Certified for Microsoft Teams. Advanced IntelliFrame™ technology makes the IntelliSHOT-M camera ideal for auto-tracking presenters in boardrooms or perfectly framing a group of coworkers in larger conference rooms. Pro AV Integrators can adjust the experience based on the room conditions and user's preferences. The IntelliSHOT-M camera provides a consistent, repeatable, and high-quality Microsoft Teams experience from Vaddio.

- Advanced Intelligent Framing algorithms keep your participants in view
- HD ePTZ camera with 30x zoom and up to 70.2 degree field of view
- USB 3.0 for seamless integration with Microsoft Teams Rooms
- Customizable autoframing experience



ROBOSHOT-30E-M PTZ PROFESSIONAL CAMERA

The RoboSHOT 30E-M PTZ Camera is the leading long range zoom camera for videoconferencing Certified for Microsoft Teams. With an impressive 30x zoom, the RoboSHOT 30E-M PTZ Camera is ideal for larger conference rooms, training rooms and multi-purpose spaces. Designed for use with Microsoft Teams Rooms (MTR) systems.

- 30x zoom
- 1/2.5-type Exmor R CMOS sensor
- 70.2° horizontal field of view
- USB 3.0 for seamless integration with Microsoft Teams Rooms
- Remote IP Management



CONFERENCESHOT EPTZ CAMERA

The ConferenceSHOT ePTZ auto-framing camera for videoconferencing makes collaborating easy. Vaddio's ConferenceSHOT ePTZ delivers a dynamic, hands-free video experience that recreates the one-to-one videoconference experience perfect for hybrid working environments. The unique custom settings included with the camera make it ideal for enterprises that want professional-quality video for various meeting room environments.

- Intelligent Framing algorithms keep your participants in view
- 5x zoom with a 129° horizontal field of view
- Simultaneous USB 3.0, HDMI and H.264 IP Streaming (RTSP or RTMP)
- Integrated omnidirectional microphone with built-in Acoustic Echo Cancellation (AEC)
- Balanced audio line in and out
- Three custom settings for auto-framing sensitivity and ability to mask high-traffic areas from auto-framer
- Free Vaddio Deployment Tool for remote management, updates and more



AV BRIDGE 2X1 SWITCHER

Vaddio's AV Bridge 2x1 Switcher is ideal for videoconferencing and lecture capture applications where two cameras are being used.

AV Bridge 2x1 supports two HDMI camera inputs with simultaneous USB 3.0, IP streaming and HDMI outputs. The 12x12 fully mixable audio matrix has mic line inputs, balanced line outputs, HDMI, IP and USB audio, plus 4x4 Dante I/O. Video mixing features configurable PIP and static graphics, which can be orchestrated using triggers, serial or web-based controls.

The PoE+ powered AV Bridge 2x1 bridges HDMI and audio sources into applications such as Zoom through its USB 3.0 interface, while its RTMP capabilities allow streaming on platforms such as Panopto. Its half rack size can be installed easily under a table, providing simple access for BYOD conferencing.



ROBOSHOT ELITE SERIES PROFESSIONAL PTZ CAMERAS

The RoboSHOT Elite Series is Vaddio's next generation of professional cameras. Designed with an 1/2.5 Type Exmor R CMOS sensor, RoboSHOT Elite cameras deliver striking, high-definition video image quality, plus more powerful image signal processing (ISP) – resulting in better light-gathering capabilities, incredible contrast and sharp 1080p/60 video, even in dim areas. Its advanced IntelliZoom™ Image Processing Technology (select models) lets you zoom greater distances without compromising image resolution.

- PoE+ powered
- 70.2° FOV, 8.5 MP, 12x & 30x zoom
- RTSP and RTMP streaming (RTMP on select models)
- Tri-Synchronous Motion technology for ultra-smooth, natural camera motion

AVAILABLE IN FIVE OUTPUT MODELS:
HDBT, HDMI, USB, SDI AND NDI

Also available as bundles with OneLINK extension systems



DEPLOYMENT TOOL

Simplify installations by viewing all your compatible Vaddio products across a deployment on one screen with the simple click of a button. The Vaddio Deployment Tool enables you to select devices from the network, choose an action like reboot the device, unmute the audio, or conduct mass firmware updates on hundreds of devices all at once, which saves you a lot of time.



Best of all, it's free. No licenses, no invoices, no maintenance fees. The Vaddio Deployment tool is for our valued integration partners and AV managers who rely on Vaddio products to keep their AV installations running smoothly.

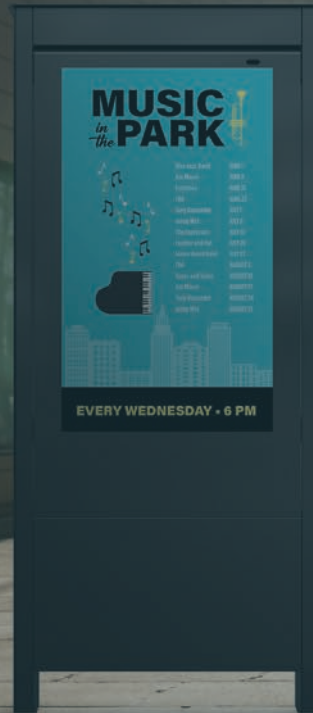
DOWNLOAD AT:
<https://info.legrandav.com/VaddioDeploymentTool>



AV BRIDGE NANO

Building upon the success of the AV Bridge Mini and AV Bridge 2x1, the AV Bridge Nano is a brand-new addition to the product family known for its ability to connect professional AV equipment to USB and IP streaming applications. It retains some of the most popular qualities of the full-featured AV Bridge models in a highly portable, cost-effective device that IT and enterprise users will appreciate. The AV Bridge Nano also complements AV systems in lecture halls, town hall meetings, or houses of worship. The AV Bridge Nano enables reliable streaming and video capture scenarios over USB or RTSP/RTMP without needing to purchase two separate devices. The essential feature set makes it ideal for the corporate user in cost-conscious applications that do not require the full functionality of the AV Bridge Mini. It is fully compatible with the Vaddio Deployment Tool and Vaddio Device Controller touchscreen accessory, and the HDMI pass-through feature makes it easy to integrate into Cisco codec setups.

- Converts an HDMI source into plug-and-play USB and IP connections for use in soft-conferencing or streaming software
- Single device capable of USB or IP streaming (up to 1080p/60 quality with USB 3.0)
- Compact size, portable and perfect for under-table or behind-display mountingaudio line inputs and output
- PoE powered – easily extends power and connectivity



AMAZING AV EXPERIENCES | legrandav.com

USA 866.977.3901 av.support@legrand.com CANADA 877.345.4329 av.support@legrand.com

EMEA +31 495 580 840 av.emea.sales@legrand.com APAC +852 2145 4099 av.asia.sales@legrand.com

©2024 Legrand AV Inc. 230982 Rev A 1/24 C2G, Chief, Da-Lite, Luxul, Middle Atlantic, and Vaddio registered trademarks of Legrand AV Inc. All other brand names or marks are used for identification purposes and are trademarks of their respective owners. All patents are protected under existing designations. Other patents pending.

COMMERCIAL BRANDS

C2G | Chief | Da-Lite | Luxul | Middle Atlantic | Vaddio