

NEXSYS™

**UPS Environmental Sensor**  
User Manual  
100-00075 RevA



**IMPORTANT SAFETY INSTRUCTIONS - EN**  
SAVE THESE INSTRUCTIONS - This manual contains important instructions that should be followed during installation and maintenance of the UPS and batteries.

For complete safety instructions, refer to either Line Interactive or Online UPS User Manuals (100-00072 and 100-00092, respectively) at [www.legrandav.com](http://www.legrandav.com).

- Only use attachments and accessories specified by the manufacturer.
- Read all instructions before using the product.

**INSTRUCTIONS IMPORTANTES SUR LA SÉCURITÉ - FR**

CONSERVER CES INSTRUCTIONS - Ce manuel contient des instructions importantes qui doivent être suivies lors de l'installation et de la maintenance de l'onduleur et des batteries.

Pour obtenir des instructions de sécurité complètes, reportez-vous aux manuels d'utilisation Line Interactive ou Online UPS (100-00072 et 100-00092, respectivement) à [www.legrandav.com](http://www.legrandav.com).

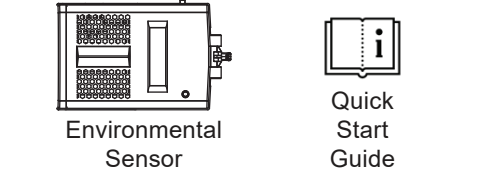
- Utiliser uniquement les accessoires spécifiés par le fabricant.
- Lisez toutes les instructions avant d'utiliser le produit.

**Supplied Components and Hardware**

After carefully opening all product packaging, identify the supplied components and hardware shown.

If any pieces are missing or damaged, please report it immediately to Technical Support at [av.middleatlantic.techsupport@legrand.com](mailto:av.middleatlantic.techsupport@legrand.com) or (866) 977-3901.

Keep the original box in a safe place for future use.



**NOTE:** To order more hardware, contact support.

Required Tools

- #2 Phillips Screwdriver

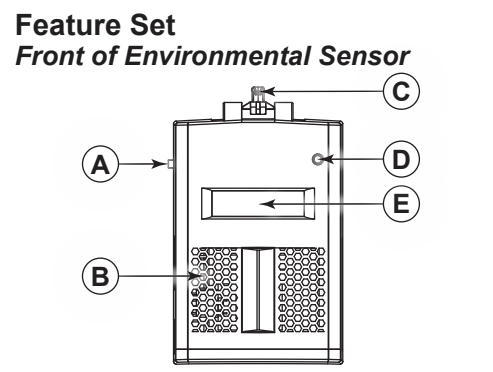


**WARNING:** Use tools with caution and follow all safety protocols.  
**AVERTISSEMENT:** Utiliser des outils avec prudence et suivre tous les protocoles de sécurité.

**Introduction**

The NEXSYS UPS Environmental Sensor (UPX-TEMP-CONT) monitors temperature, humidity, and other conditions in a room environment.

The device provides four digital input connections for external sensor devices (not provided) and supports both RS-232 or RS-485 communication protocols (selectable via DIP switch).



**A. Push Switch**  
Controls the LCD display as follows:

- Press and hold the button for .2 seconds to turn the backlight ON or OFF.

**Front of Environmental Sensor (Continued)**

**NOTE:** The backlight automatically turns off after a minute unless it's done manually.

- Press and hold the switch for 1 second to force the backlight to remain lit.

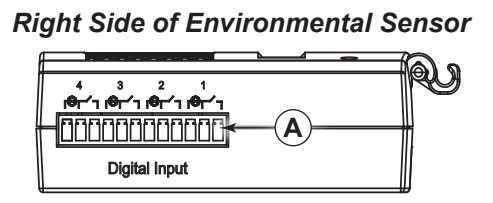
**B. Internal Sensors**  
Temperature and humidity sensors.

**C. Installation Hook**  
Attaches the unit to an enclosure, rails, or other locations.

**D. System Indicator**  
The Green LED indicates the following statuses:

- Continuously Lit: The unit is powered on.
- Off: The unit is not powered on or is malfunctioning.
- Blinking: The unit is transferring data.

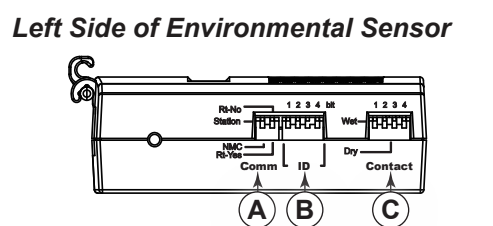
**E. LCD Display**  
Shows temperature and humidity readings.



**A. Digital Input**

- Connect dry contact sensors or wet 5-24V sensors to the 4 digital inputs shown.
- Use the Contact DIP switches on the left side of the unit to configure the 4 digital inputs for wet or dry operation.

For more information, see the “Setting Digital Input PINs for Wet or Dry Contact Sensors” topic.



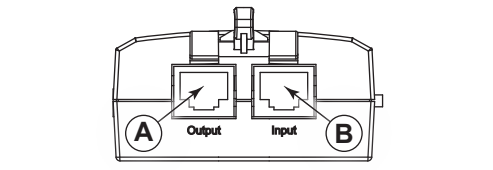
**A. Comm**  
Use these 2 DIP switches to select either RS-485 or RS-232 communication modes. For more information, see the “Setting Comm DIP Switches” topic.

**B. ID**  
These 4 DIP switches currently are not used.

**Left Side of Environmental Sensor (Continued)**

**C. Contact**  
Use these 4 DIP switches to configure the 4 digital inputs on the right side of the unit to use either dry contact sensors or wet 5-24V sensors. For more information, see the “Setting Contact DIP Switches” topic.

**Top of Environmental Sensor**



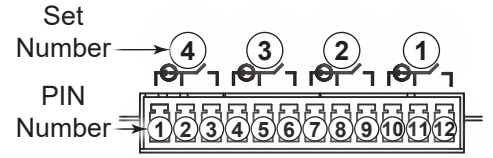
**A. Output Port**  
Not currently used.

**B. Input Port**  
COM Port (Sensor Port) for communication with the RackLink Network Card.

**Setting Digital Input PINs for Wet or Dry Contact Sensors**

Refer to Set and PIN Number input locations and definitions for your specific wet or dry contact needs.

**Understanding Set and PIN Number Locations**



**Understanding Set and PIN Number Definitions**

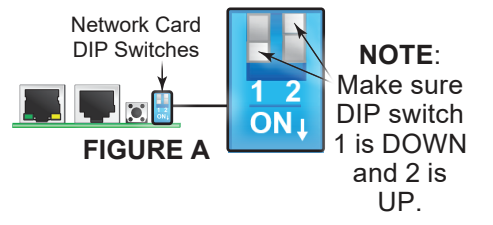
Connect wet contacts as follows: + to DI and - to DICOM.

Connect dry contacts to corresponding DICOM and DIGROUND pins.

Set Number	4			3		
PIN Number	1	2	3	4	5	6
Definition	DI	DICOMM	DIGND	DI	DICOMM	DIGND
Set Number	2			1		
PIN Number	1	2	3	4	5	6
Definition	DI	DICOMM	DIGND	DI	DICOMM	DIGND

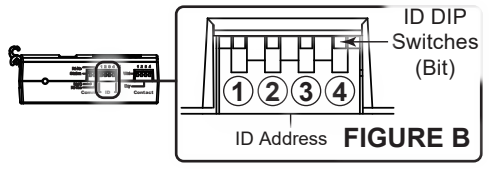
**Setting Network Card DIP Switches**

Before connecting the sensor to your network card, you must set the DIP switches on the card with switch 1 down (ON) and switch 2 up (OFF) as shown. (FIGURE A)



**ID DIP Switches**

The ID DIP switches come from the factory with each one in the OFF setting (up) as shown. Since they are not currently used, there is only one address (0) as indicated on the table below. (FIGURE B)

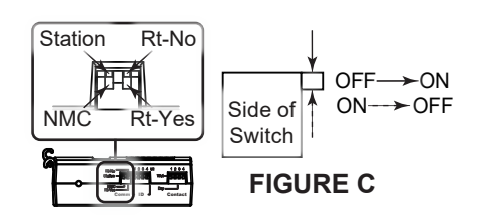


Combination	DIP Switch 1	DIP Switch 2	DIP Switch 3	DIP Switch 4	ID Address
1	OFF	OFF	OFF	OFF	0

**Setting the Communication Mode via Comm DIP Switches**

The two communication mode DIP switches allow you to switch between RS-435 and RS-232 (the first DIP switch) and enable or disable a termination resistor for each protocol (the second DIP switch). (FIGURE C)

**NOTE:** When using RS-232, we recommend disabling the termination resistor and enabling it when using RS-485.

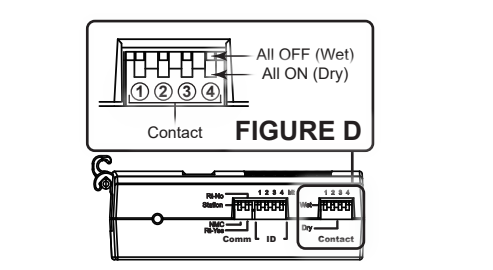


DIP Switch 1	Communication Mode
OFF	Station, RS-485
ON	NMC, RS-232

DIP Switch 2	110Ω Terminal Resistor Status
OFF	When using RS-232, disable the 110Ω terminal resistor.
ON	When using RS-485, enable the 110Ω terminal resistor.

**Setting Contact DIP Switches**

Turn all 4 DIP switches ON or OFF to use either a dry contact sensor or wet 5-24V sensor, respectively. (FIGURE D)



DIP Switch 1	DIP Switch 2	DIP Switch 3	DIP Switch 4	Contact Status
OFF	OFF	OFF	OFF	Wet Contact
ON	ON	ON	ON	Dry Contact

**Installing Your Sensor**

**NOTE:**

- Plan the location of your sensor considering all the necessary connections and cable routing required for your use.
- Avoid installing the sensor in direct sunlight, near a heat source, or next to a window that might provide inaccurate readings.

Use any of the following methods to hook, mount, or attach your sensor as follows:

- Use the installation hook to attach the sensor to an enclosure, rails, or other location.
- Use hardware (not provided) to mount the unit to a wall, if desired.
- Use the magnetic bottom of the sensor to attach the unit to metal surfaces.



**Warranty**

For warranty information, refer to [www.legrandav.com/policies/warranty\\_information](http://www.legrandav.com/policies/warranty_information).

**Contacting Corporate Headquarters**  
P: (866) 977-3901 | F: (877) 894-6918  
[www.legrandav.com](http://www.legrandav.com)  
[av.middleatlantic.techsupport@legrand.com](mailto:av.middleatlantic.techsupport@legrand.com)

**Contacting Middle Atlantic Canada**  
P: (888) 766-9770 | F: (888) 599-5009  
[ca.middleatlantic.com](http://ca.middleatlantic.com)  
[av.canada.customerservice@legrand.com](mailto:av.canada.customerservice@legrand.com)

**United States (US)**  
Legrand | AV Headquarters  
6436 City West Parkway  
Eden Prairie, MN, 55344, USA

At Legrand AV Inc. we are always listening. Your comments are welcome.  
Legrand AV is an ISO 9001 and ISO 14001 Registered Company.

