

Nivo® Acoustic

AUNV

AirCore® Technology

MIDDLE ATLANTIC®
A brand of **legrand**



BEFORE YOU BEGIN

PRODUCT IS ASSEMBLED IN THE FIELD

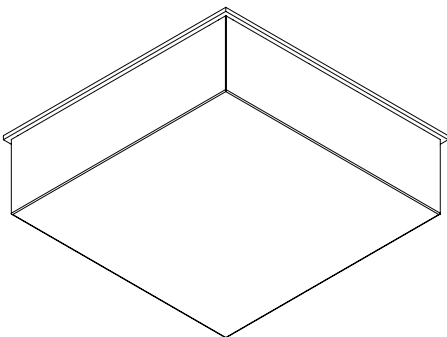
- Contractor is responsible for adequately reinforcing walls and/or ceilings to support fixture weight.
- Middle Atlantic Products accepts no responsibility for inadequately reinforcing and preparing walls and/or ceilings.
- The information contained in this drawing is the sole property of Middle Atlantic Products. Any reproduction in part or whole without the written permission of Middle Atlantic Products is prohibited.

INSTRUCTION KEY

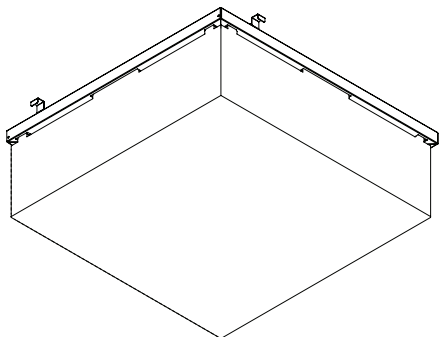


ATTENTION

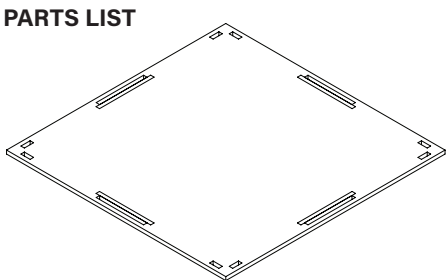
COMPONENT KEY



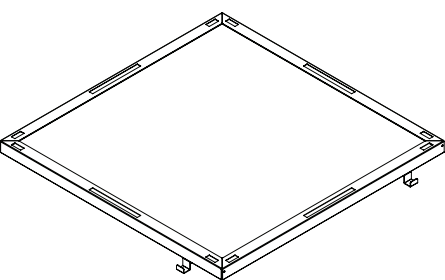
Standard Assembly



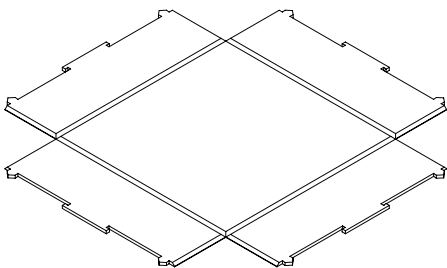
Plenum/Chicago Plenum Assembly



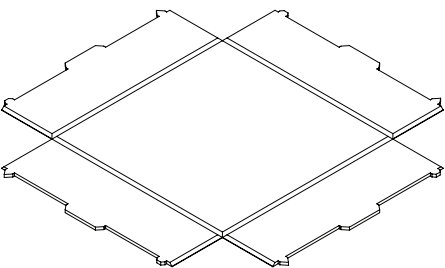
Back Panel



Plenum/Chicago Plenum Back Panel

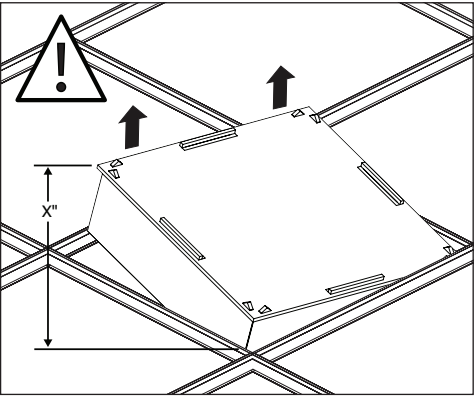


Drop Tile (ships flat)



Plenum/Chicago Plenum Drop Tile (ships flat)

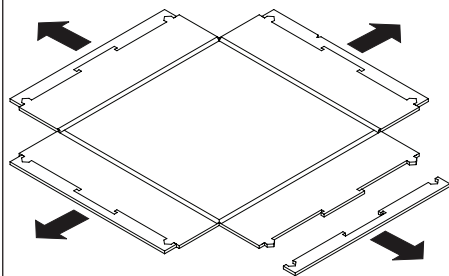
DROP TILE HEIGHT (IN)	CLEARANCE REQUIRED ABOVE CEILING (IN)
Flush	7"
1"	10"
2"	12"
3"	14"
4"	17"
5"	19"
6"	21"
7"	23"



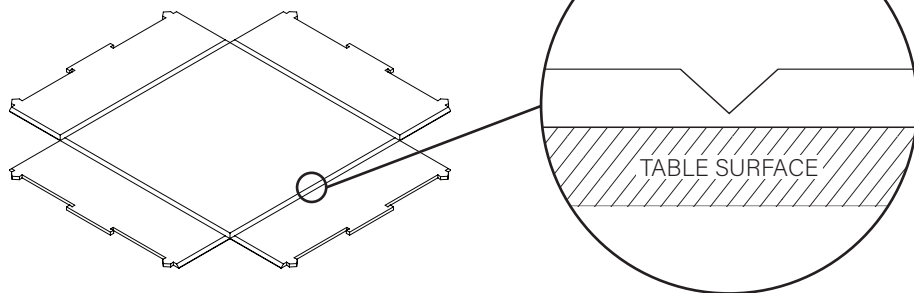
**ASSEMBLE ON A FLAT SURFACE
TO ENSURE PROPER ALIGNMENT**

STANDARD INSTALLATION

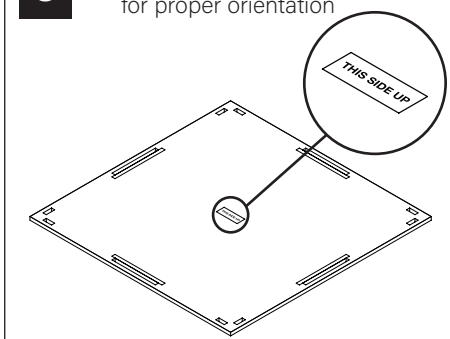
- 1** Remove excess PET material from Drop Tile prior to installation



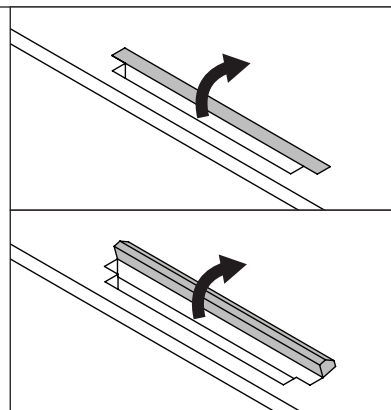
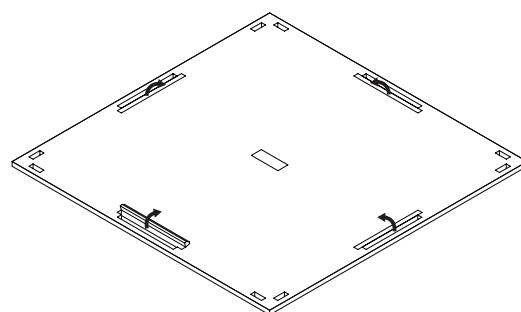
- 2** Orient Drop Tile with v-cuts facing upward



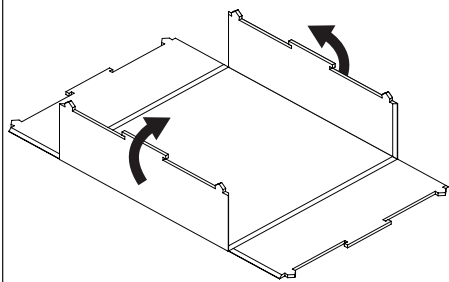
- 3** Refer to label on Back Panel for proper orientation



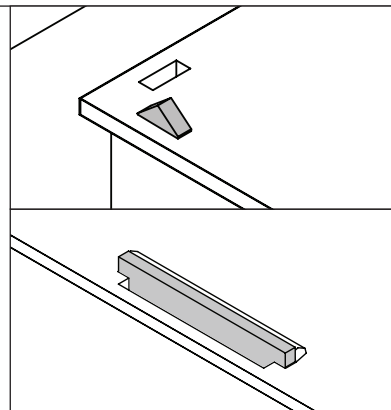
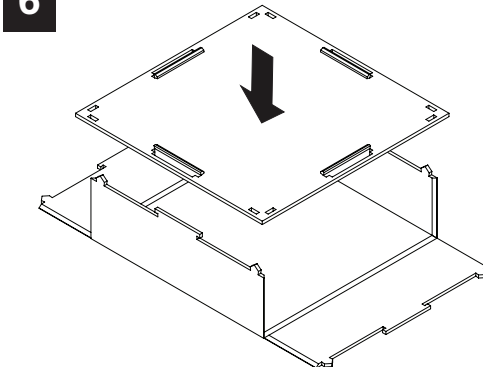
- 4** Flip up flaps on Back Panel



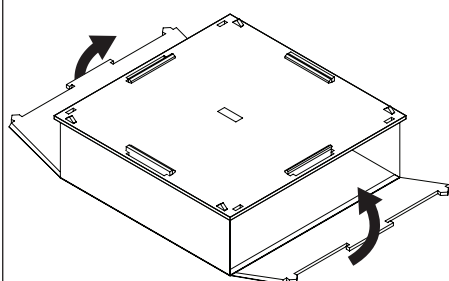
5



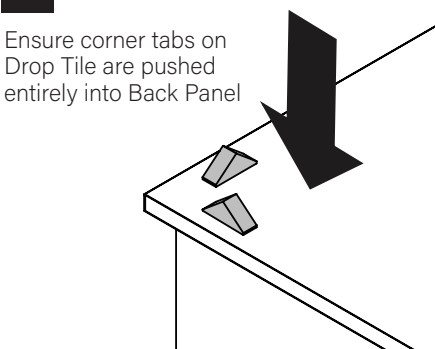
- 6** Insert tabs on Drop Tile into slots on Back Panel

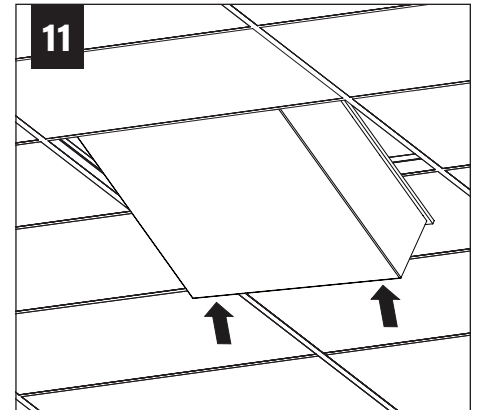
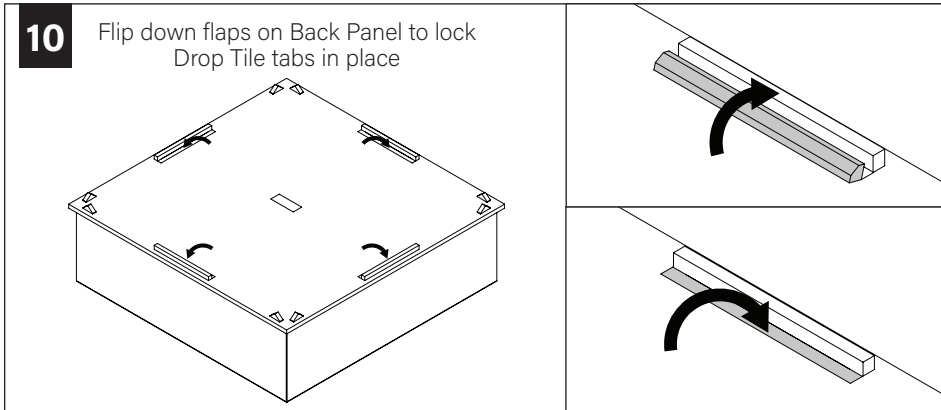
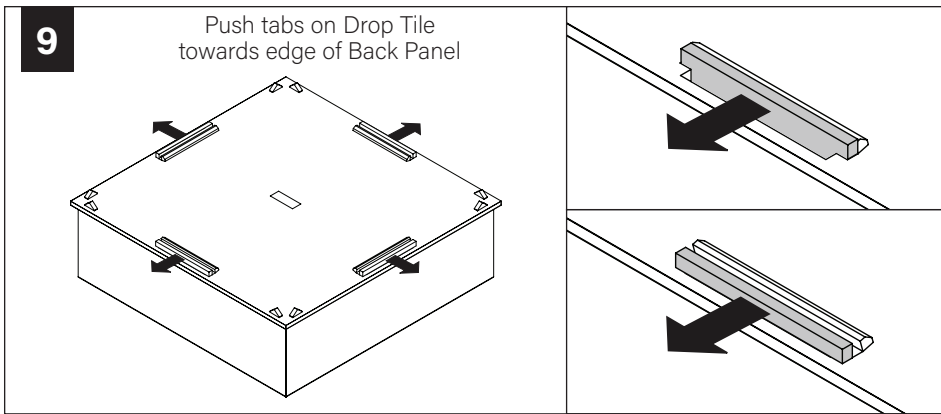


- 7** Insert tabs on Drop Tile into slots on Back Panel

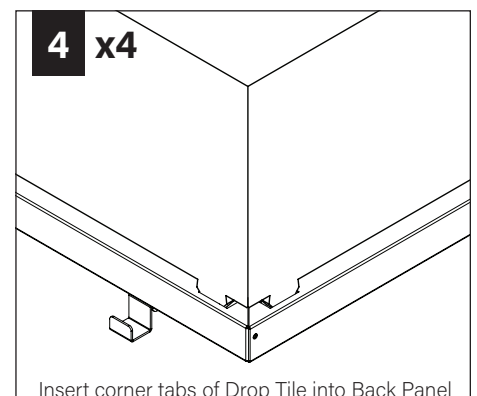
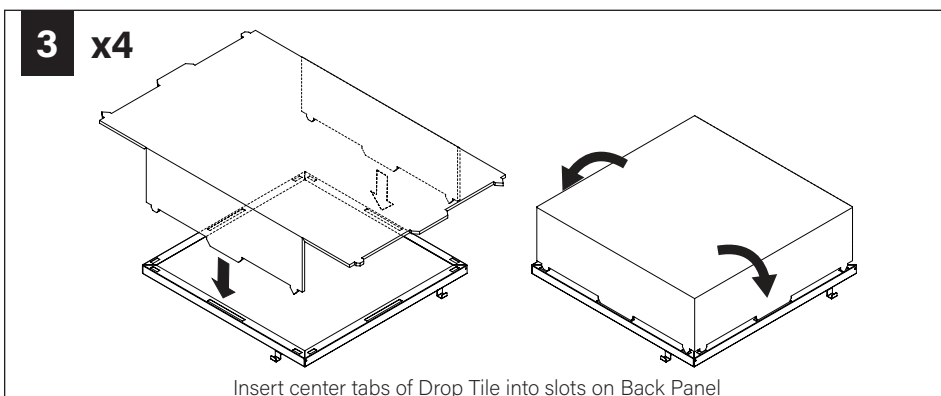
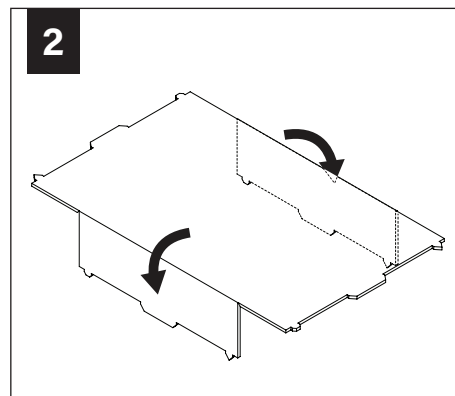
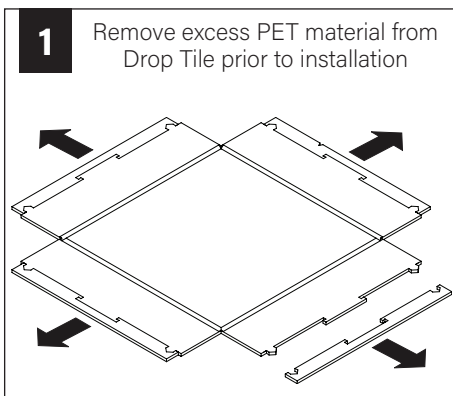


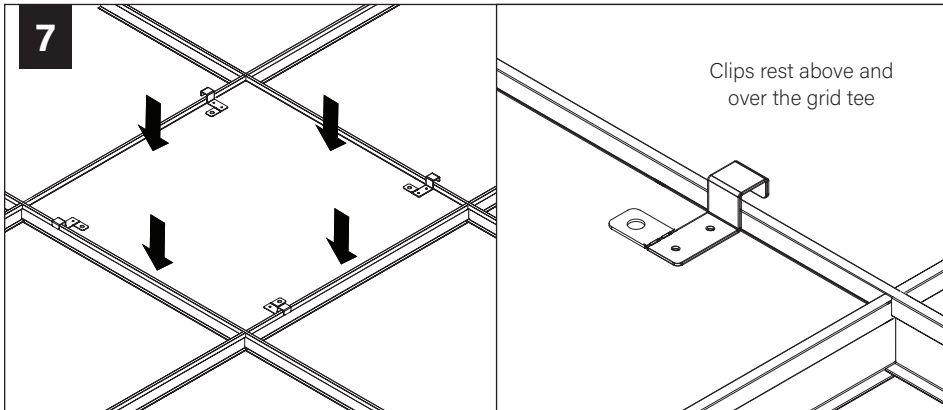
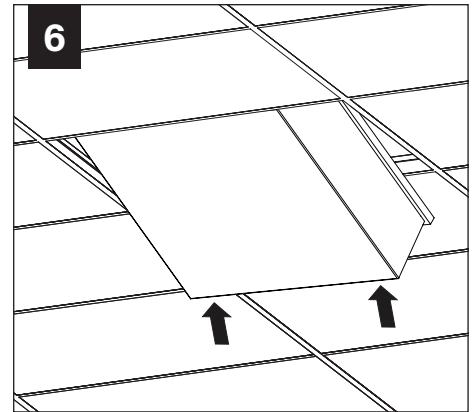
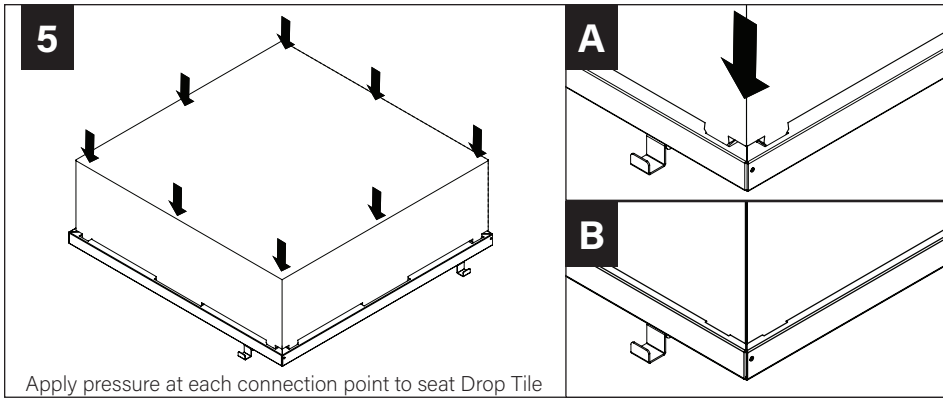
- 8** Ensure corner tabs on Drop Tile are pushed entirely into Back Panel





PLENUM/CHICAGO PLENUM INSTALLATION





Secure to structure above [OPTIONAL]

