

## Release Notes and Update Instructions

# PCC Premier Camera Controller

---

## Current Release

### PCC Premier 2.4.1

January 27, 2025

#### Improvement

- Minor improvements have been implemented to align with updated manufacturing requirements. These changes do not affect user-facing functionality.

## Release History

### PCC Premier 2.4.0

December 23, 2019

#### New Features

- If you restore factory defaults, the PCC Premier now requires an initial setup step to make the administrative controls and other functionality available. In this initial step, you must set the admin password. This is also required for initial access to devices that ship with this version of firmware. See [Initial Set-Up Procedure](#). After completing the initial setup, you have the option of enabling features that are now disabled by default. At this time, setting the admin password is the only task in the initial setup procedure.
- When static IP addressing is selected, the administrator can specify a DNS server.
- The touch-panel interface now provides control of CCU scenes on connected PrimeSHOT 20 HDMI cameras.

#### Improvements

- Security improvements include changes to the default settings for:
  - HTTP access is disabled. To connect using HTTPS, type https:// followed by the IP address. Because Vaddio uses self-signed certificates, your browser will present warning messages indicating that you are trying to access an unsafe website; however, this is a secure connection to the device and traffic will be encrypted.
  - IP streaming is disabled.
  - Telnet access is disabled.
  - RS-232 access is disabled.
- The Telnet command `network settings get` now includes the PCC Premier's hostname in the information it returns.
- Telnet commands to set hostnames and other user-definable strings now accept hyphens.
- When rebooting the PCC Premier, some settings could be lost. This has been fixed.
- Exporting data to an Android device now works properly.

#### Notes

Vaddio cameras with outdated firmware may become controllable only over an RS-232 connection. Updating camera firmware will restore the ability of the PCC Premier to control them via IP.

### PCC Premier 2.3.0

August 21, 2019

## New Features

- Vaddio cameras that support DNS Service Discovery can now be discovered from the web interface.
- Added serial control support for the RoboSHOT 30E NDI camera.

## Improvements

- Added support for chained preset recall for Vaddio cameras which support the feature.
- Added support to the web interface for long press right clicking on iOS devices.
- TLS v1.1 protocol is no longer supported; more recent protocols continue to be supported.
- In previous firmware versions One-Push White Balance would only execute once per camera from the touch-screen display. This has been fixed.

## Notes

- Some DocCAM 20 HDBT and PrimeSHOT 20 HDMI cameras may require this firmware update to be recognized by the PCC Premier.

## **PCC Premier 2.2.0**

April 9, 2019

## New Features

- Added serial control support for the ZoomSHOT 30 camera.
- Added serial and IP control support for the RoboSHOT 40 UHD camera.
- Added serial and IP control support for RoboSHOT Elite series cameras.
- VISCA-over-IP control support for Sony BRC-X1000 and BRC-H800 cameras, as well as existing supported cameras that offer VISCA-over-IP control.
- One Push White Balance can now be executed through the web interface camera controls on cameras that support the function.

## Improvements

- On receiving a reboot instruction, the PCC Premier now ensures your most recent configuration changes have been saved successfully before rebooting.
- Improved handling of HDMI hot plug detect.
- Device Stream information now also includes an IP connected camera's streaming format: RTSP or RTMP.
- User interface improvements to clarify that RTMP streaming cameras cannot be viewed locally.
- Iris is now displayed as an f-stop value; iris gain is now displayed in dB.
- In some cases, after booting the PCC Premier, the joystick did not control the selected camera until another camera was explicitly selected. This has been fixed.
- Fix for streaming not always functioning properly if the PCC Premier is put into standby while streaming cameras are still actively connecting to the controller.
- Settings on serially connected cameras remain in sync with the controller when the camera is put in standby mode from another device.
- Enhanced HDMI hot-plug detection.
- In some cases, the web interface did not load properly if the computer had recently accessed another Vaddio device at the same IP address. This has been fixed.
- Improved user experience when interacting with cameras that are in standby.
- Fix for controller lights incorrectly showing a selectable camera when an IP-controlled camera was removed from an active camera group.
- Fix for presets not always storing properly from the touch-screen display if cameras were recently swapped.
- CCU scenes and presets with Panasonic cameras have more consistent color reproduction.
- Manual focus commands sent from the web interface to Panasonic cameras better align with camera's focus speed range.

- Fix for the menu knob becoming temporarily stuck in the red state under certain circumstances.

#### Notes

- Some DocCAM 20 HDBT, RoboSHOT HDMI, and RoboSHOT HD-SDI cameras may require this firmware update to be recognized by the PCC Premier.

### **PCC Premier 2.1.0**

August 7, 2018

#### New Features

- Added serial and IP control support for the PrimeSHOT 20 HDMI camera.
- Added serial control support for the WideSHOT SE camera.
- Improved support for the DocCAM 20 HDBT camera.
- Added ability for the administrator to disable the device's Telnet server through the web interface.
- HTTPS access to the PCC Premier is now supported and the HTTPS certificate can now be configured from the admin web interface.
- HTTP access to the PCC Premier can now be disabled by an admin. When this is disabled, HTTPS must be used to connect to the web interface.
- Added camera standby control in the admin web interface.
- Added the ability to import configurations from previous firmware versions.

#### Improvements

- Fix for intermittent preset storing issue on ConferenceSHOT 10 over RS-232.
- Discontinued support for DES and 3DES cyphers and TLS v1.0 protocol. More recent cyphers and protocols continue to be supported.
- Enhanced the IP streaming performance.
- Control for HD-19 cameras is more responsive.
- Data propagated to touch-panel display loads faster.
- Fix for button LED state sometimes not reflecting actual state and failing to update until a reboot.

#### Notes

- Streaming may not function properly if the PCC Premier is put into standby while streaming cameras are still actively connecting to the controller. This can be fixed by disabling and re-enabling the camera bus.

### **PCC Premier 2.0.0**

November 27, 2017

#### New Features

- Added serial and IP control support for the DocCAM 20 HDBT camera.
- Added serial and IP control support for the RoboSHOT IW camera.
- Ability to recalibrate motors for applicable cameras connected over serial control.
- Web interface and touch-screen display now indicate when a camera is reachable, but not supported by the system.

#### Improvements

- Improved camera UI labeling.
- Updated system time zone data.
- IP streams from supported cameras can now receive audio as well as video.

### **PCC Premier 1.1.3**

December 8, 2016

#### Improvements

- Improved support from touch-screen display for storing color information in presets to RoboSHOT 12 & 30 HDBT cameras.
- Improved Tri-sync preset support for RoboSHOT 12 HDBT cameras.

### **PCC Premier 1.1.2**

November 28, 2016

#### New Features

- Added serial and IP control support for RoboSHOT 12 & 30 HDBT cameras.
- Wide dynamic range controls added to touch-screen display for cameras that support the feature.

#### Improvements

- Enhanced control of wide dynamic range for ConferenceSHOT 10 cameras.
- Updated factory scenes for new color baseline for RoboSHOT 12 USB firmware version 2.1.2 and ConferenceSHOT 10 cameras.
- Improved detail control for Panasonic AW-HE130.
- Improved chroma range for Panasonic AW-HE40 and AW-HE130 cameras.
- Updated web interface icons.
- Improved streaming performance.

### **PCC Premier 1.1.1**

July 5, 2016

#### New Features

- Added serial and IP control support for the RoboSHOT 20 UHD camera.

#### Improvements

- Enhanced white balance for Sony BRC-Z330 cameras.
- Improved system messaging.

### **PCC Premier 1.1.0**

March 31, 2016

#### Improvements

- Improved streaming.
- New layout for touch-screen display.

### **PCC Premier 1.0.0**

January 14, 2016

#### Notes

- Initial release.

## Initial Set-Up Procedure

Recent security improvements to Vaddio products have changed the way you interact with this product when you set it up for the first time.

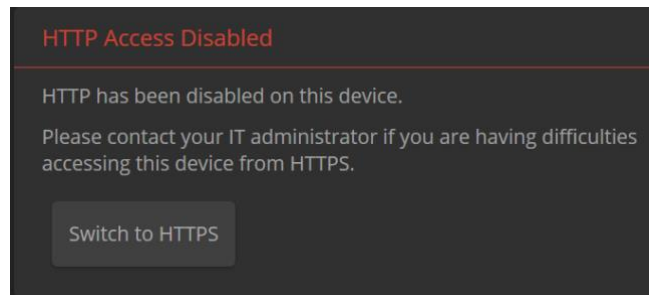
### What's new

- The product now uses the more secure HTTPS protocol, rather than HTTP.
- You must set the admin password using the web interface. Until the admin password is set and any other initial tasks are completed, the control and administrative interfaces are not available.
- You will not be able to open a Telnet session to this product until you set the password using the web interface.
- You will need to set the admin password again if you restore factory defaults.

**Refer to the product's manual for specific instructions to discover its IP address and access its web interface.**

### Connect using HTTPS

Before the product is configured, HTTP access is disabled. To access the web interface, type `https://` followed by the IP address. Otherwise, you may encounter this message:



Switch to HTTPS if you see this message.

### Expect a security warning from your browser

Different browsers will respond with different messages and options. Your browser will probably present a message indicating one of these things:

- The connection is not private
- The site is not secure
- The site is not trusted
- The site poses a security threat

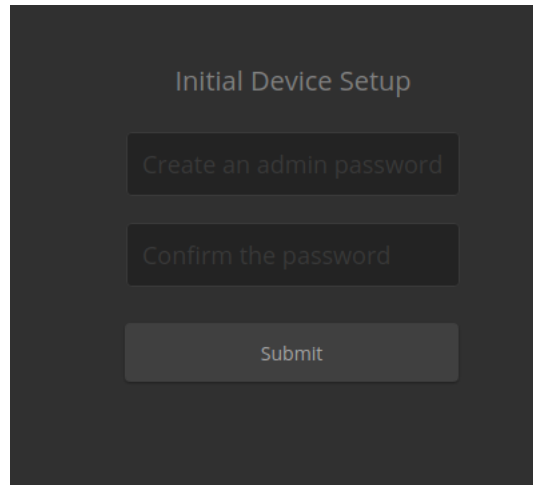
This is because the certificate (the product's website security credential) is self-signed rather than being issued by an external certificate authority.

*To proceed to the product's web interface, you will need to make the selections that your browser's security message discourages.* The security warning page may present an option to learn more, view details, or go to the "Advanced" page. When you select the applicable option, your browser provides a button or link to continue to the IP address you entered, with a reminder that it may be unsafe. Select this option.

After you have accessed the product's web interface once, your browser remembers its IP address and will not present the security message again.

## Device set-up

The first time the product's web interface is accessed, it presents a landing page for initial set-up tasks. You will also encounter this page after restoring factory defaults. After you complete the initial set-up, you will be able to work with the product.

A screenshot of the 'Initial Device Setup' web interface. The page has a dark background with light-colored text and input fields. At the top, the title 'Initial Device Setup' is centered. Below it, there are three input fields: the first is labeled 'Create an admin password', the second is labeled 'Confirm the password', and the third is a 'Submit' button.

Create and confirm the admin password, and complete any other required tasks such as accepting agreements. Then select Submit. The main administrative web interface opens.

In the administrative web interface, you can configure product security features to conform to the IT policies for your environment. Except where otherwise noted, these settings are on the Security page.

- Create a user password – Allow password-protected, non-administrative access to the operator's web interface.
- Enable guest access – Allow non-administrative access to the operator's web interface without requiring a login.
- Choose whether to expire idle sessions – By default, the web interface automatically logs you out after 30 minutes of inactivity.
- Enable HTTP access – Enable connections to the product's web interface using the less-secure HTTP protocol.
- Enable Telnet access – This is disabled by default.
- Enable IP streaming – This is disabled by default. You can enable it on the Streaming page.

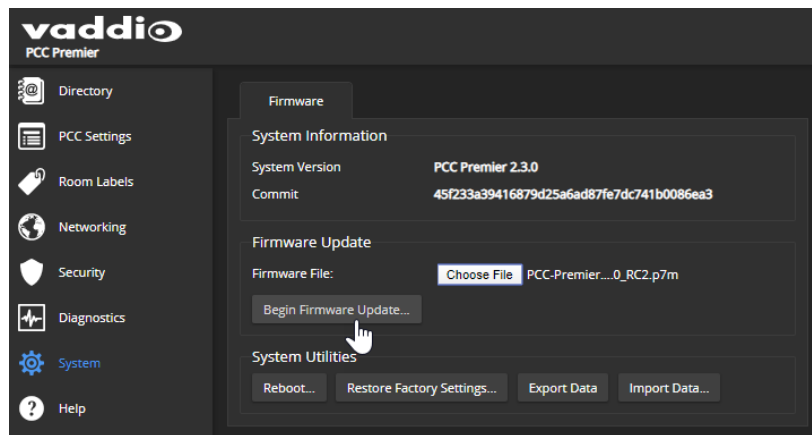
# Firmware Update Instructions – PCC Premier

## Requirements

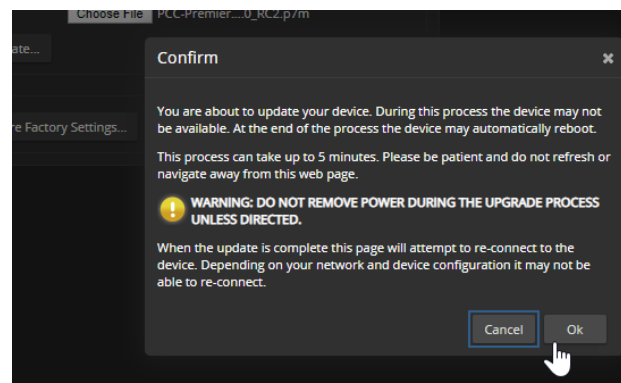
- Network access to the PCC Premier.
- The web interface's admin password.
- The .p7m firmware file for the camera – download this from <https://www.legrandav.com/>. It is available on the product page's Resources tab.

## Step-By-Step Process

1. Enter the IP address or hostname for the PCC Premier into the address bar of a web browser.
2. Log in as admin.
3. Navigate to the System page. Your device's System page may present different information than shown in the screen shot.
4. Select Choose File, then browse to the downloaded firmware and select it. The filename ends with .p7m.
5. Select Begin Firmware Update.



6. Read and understand the information in the Confirm dialog box. It's dull, but it could save you some time and aggravation.



7. Select OK. A progress message box opens. If the update process presents warnings or error messages, read them carefully.

8. The PCC Premier reboots when the update is complete.

**Caution**

**The PCC Premier must remain connected to power and to the network during the update. Interrupting the update could make the camera unusable.**

This update can take up to 5 minutes to complete; the pop-up message window will identify the progress of the update.

While you're waiting, you could try the following:

- Try frolicking; have you ever done that before? Maybe you're super good at it.
- Realize the contemporary comedy that is the fact that the introductory character in the classic novel 'Dracula' doesn't know what a vampire is. We're all reading it like "Hey, Jonathan Harker, get out of there! That Count guy is so obviously a vampire", and he's like "I don't know what that means and I'm going to stick around this house for way too long". Pure hilarity.
- Turn to the left. Take it back now, y'all. One hop this time. Right foot let's stomp. Left foot let's stomp. Cha cha real smooth!

After the update is complete, the System page will display the new firmware version under System Information. Enjoy that 'New Firmware Smell'!

**If the update procedure is interrupted for any reason the product may need to be returned to Vaddio for updating. If the update does not seem to run, DO NOT TURN OFF THE PRODUCT OR UNPLUG IT. CALL TECH SUPPORT IMMEDIATELY.**

**If you have any questions, call Vaddio Technical Support: (+1) 763-971-4428 or 1-800-572-2011**