

FLEX — an innovative data distribution solution for interior spaces

The Flex Raceway System is an innovative floor-based power and data distribution solution for interior spaces. The system is comprised of prewired, interconnecting Powertracs and Power Hubs that feature expanded data capacity and interchangeable power devices that can be hot-swapped or completely removed at any time.



FLEX Features & Benefits

- **On-Floor or Under-Carpet Installations:** Select the system that best fits your space with under-floor or over-floor installations available
- **High-Density Power & Data Capability:** Features a 4-circuit power system with quad receptacle devices and optional AV/data capabilities
- **Reconfigurable:** Location of power can be moved after installation with modular power hubs
- **Versatile Design:** Raceway runs up to 75-feet in length and includes prewired power, versatile data and low-profile transition ramps
- **ADA Compliant:** All installation options meet ADA Accessibility Guidelines
- **Tamper-Resistant (TR) Options:** TR system includes plug-in that secures connections and prevents electrical hazards for enhanced safety
- **Furniture Feed Option:** Hardwire device can be used in place of a receptacle device for hardwiring to furniture

Vertical Markets

- Commercial
- Education
- Government
- Retail
- Healthcare

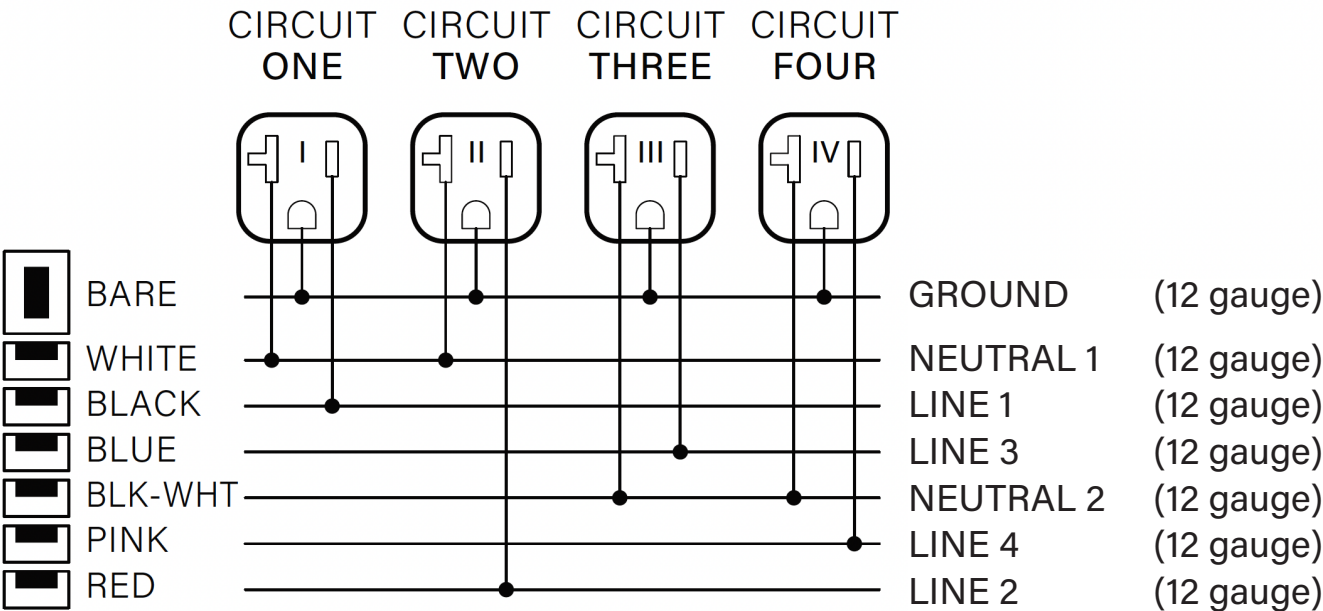
Compliance



Multioutlet Assemblies - File E499299
Multioutlet Assembly Fittings File E514566

Wiring Diagram

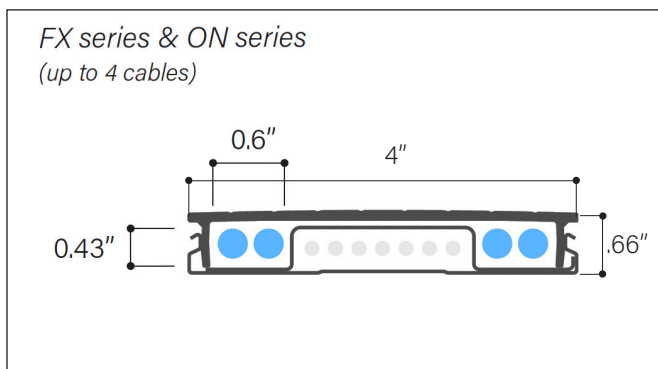
The Flex raceway is a 4-circuit system. Please reference the wiring diagram below.



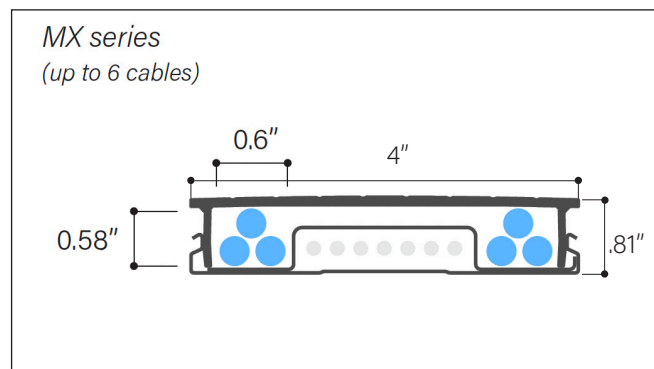
Powertrac

Powertracs are prewired segments available in five nominal lengths (2', 3', 4', 5', 6') that are paired with Top Covers and Transition Ramps. Each Powertrac has modular connectors on each end that easily snap into an Entrance Fitting, Powertrac Extender, 6" Powertrac Extender, Powertrac Corner, Power Hub or Power End Hub to build your Flex raceway.

For Installation Under Carpet and On Top of Flooring



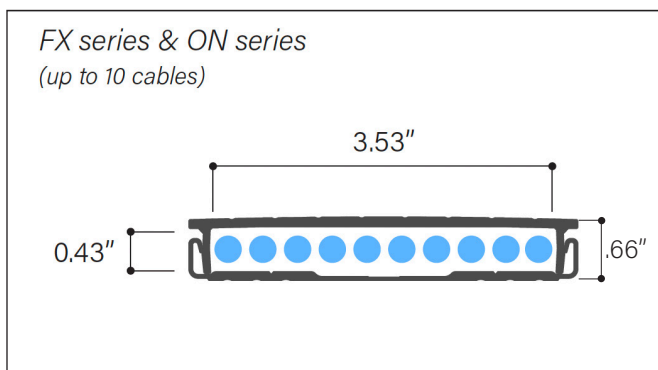
For Installation Under Carpet Tile with Top of Cover Exposed



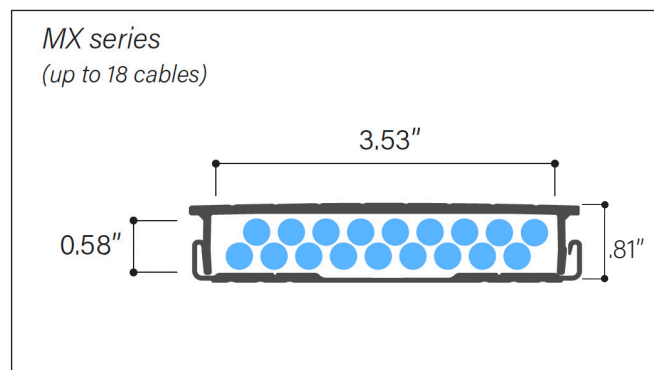
Data Channel

Data channels can be ganged alongside the main Flex raceway to provide additional data capacity. Data channels include both a bottom Datatrak and a Top Cover. Each data channel typically holds up to 10 cables for our FX series & ON series and up to 18 cable for our MX series.

For Installation Under Carpet and On Top of Flooring



For Installation Under Carpet Tile with Top of Cover Exposed

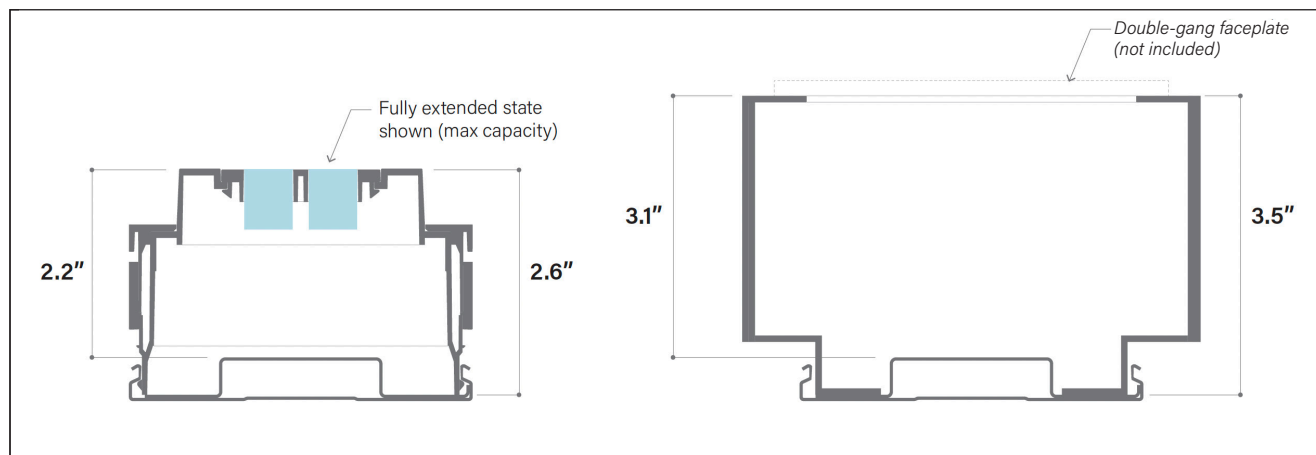


(Measurements with Top Covers installed and typical data capacity shown.)

In a Powertrac, note (2) key dimensions

Data Device

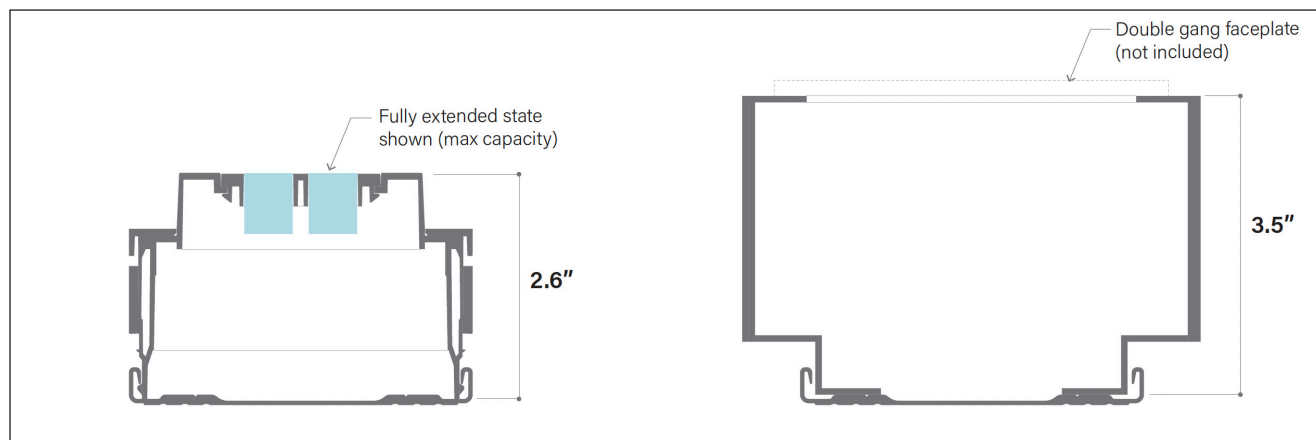
A/V Device

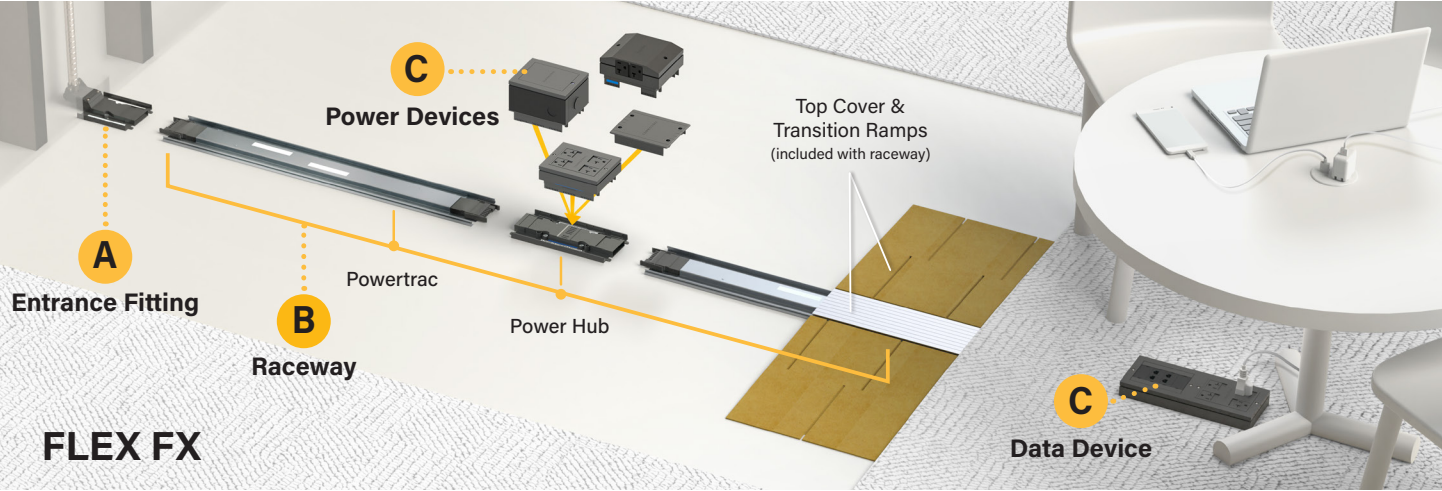


In a Datatrak or Express Under-Carpet Kit, note (1) key dimensions

Data Device

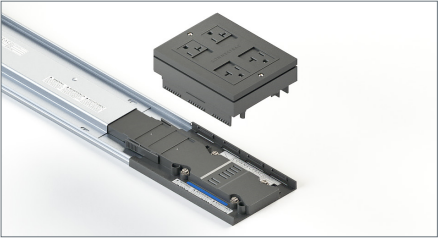
A/V Device



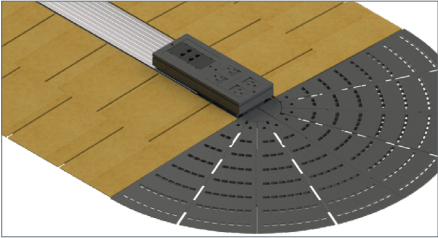


- A) Entrance Fitting:** Quick connector powers entire raceway and allows data to enter.
- B) Raceway:** Consists of Powertracs (prewired raceway segments) and Power Hubs (connects powertracs and provides access for power devices).
- C) Power/Data Devices:** Interchangeable Power Devices quickly snap into any Power Hub location. Data Devices go anywhere on the raceway.

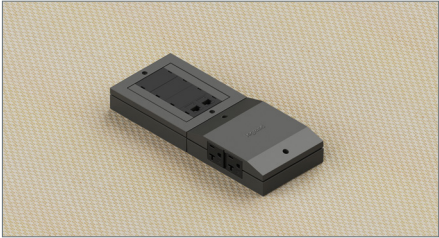
Product Components



Flex Raceways are built by connecting Powertracs with Power Hubs. Receptacle Device snaps into Power Hub.



Data Device snaps next to the Receptacle Device in the raceway. Low-profile ramps transition system to the floor.



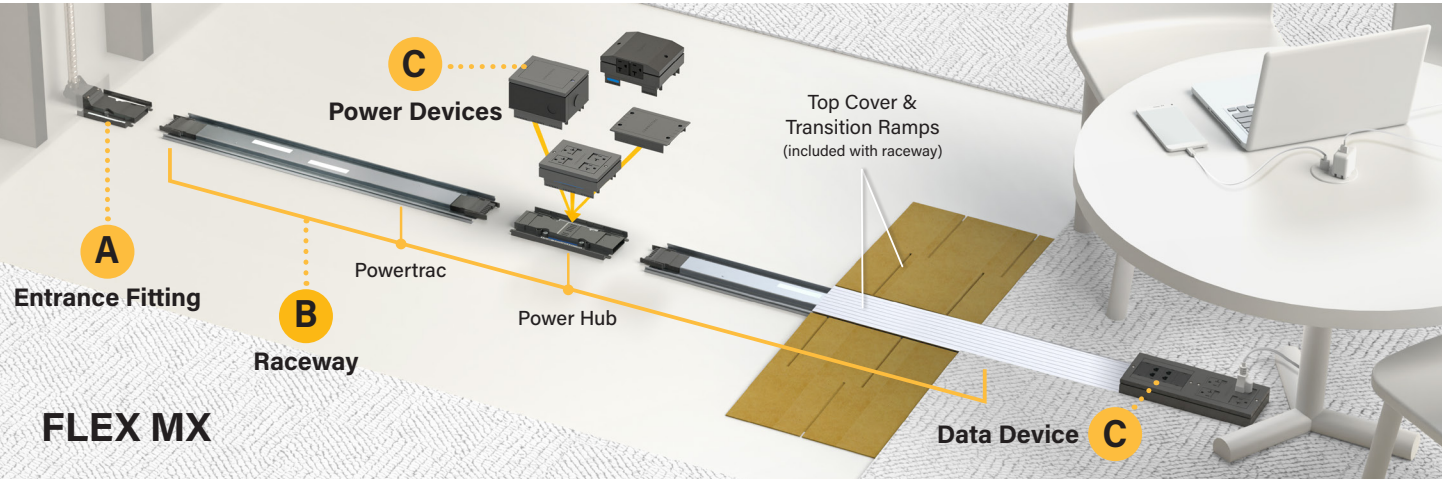
Carpet tiles create a hidden solution for power and data.

Product Specifications

General	
Data Capacity	Powertracs hold 0-6 / Datatracs hold 0-10 data cables
Load Test	The Flex Raceway is designed to withstand 250 lb. individual point loads or a 4-point load of 1,000 lb.
Conduit	7-wire, 4 circuit
Receptacle Device	4 NEMA 5-20R receptacles, PC Plastic
TR Receptacle Device	4 NEMA 5-20R TR receptacles, PC Plastic
Hardwire Device	4 circuit monument
Components	
Entrance Fitting	Steel Conduit - PC Plastic
Wireway - Powertrac	Steel
Wireway - Datatrac	Extruded Aluminum
Top Cover	Extruded Aluminum (Silver finish)
Wall Base Trim	PC Plastic
Data Device	PC Plastic, holds up to 8 keystone modules
Ramps	
End Ramp Assembly	PP Plastic
Transition Ramps	MDF

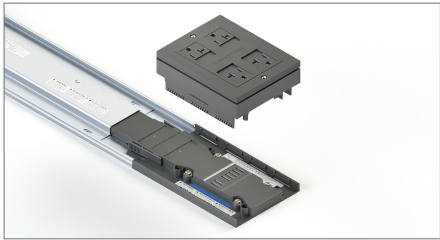


Installation	
To Surface	Screw mount to any subfloor material that is ½" or thicker
System Specifications	
System width	34 inches (single channel)
System length	Max 75'

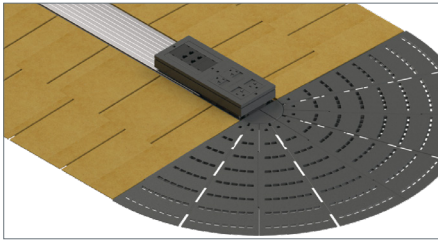


- A) Entrance Fitting: Quick connector powers entire raceway and allows data to enter.
B) Raceway: Consists of Powertracs (prewired raceway segments) and Power Hubs (connects powertracs and provides access for power devices).
C) Power/Data Devices: Interchangeable Power Devices quickly snap into any Power Hub location. Data Devices go anywhere on the raceway.

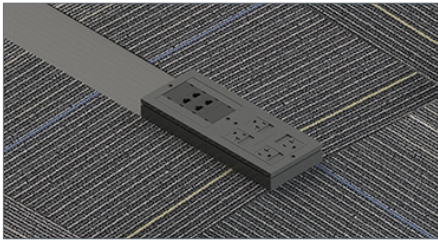
Product Components



Flex Raceways are built by connecting Powertracs with Power Hubs. Receptacle Device snaps into Power Hub.



Data Device snaps next to the Receptacle Device in the raceway. Low-profile ramps transition system to the floor.



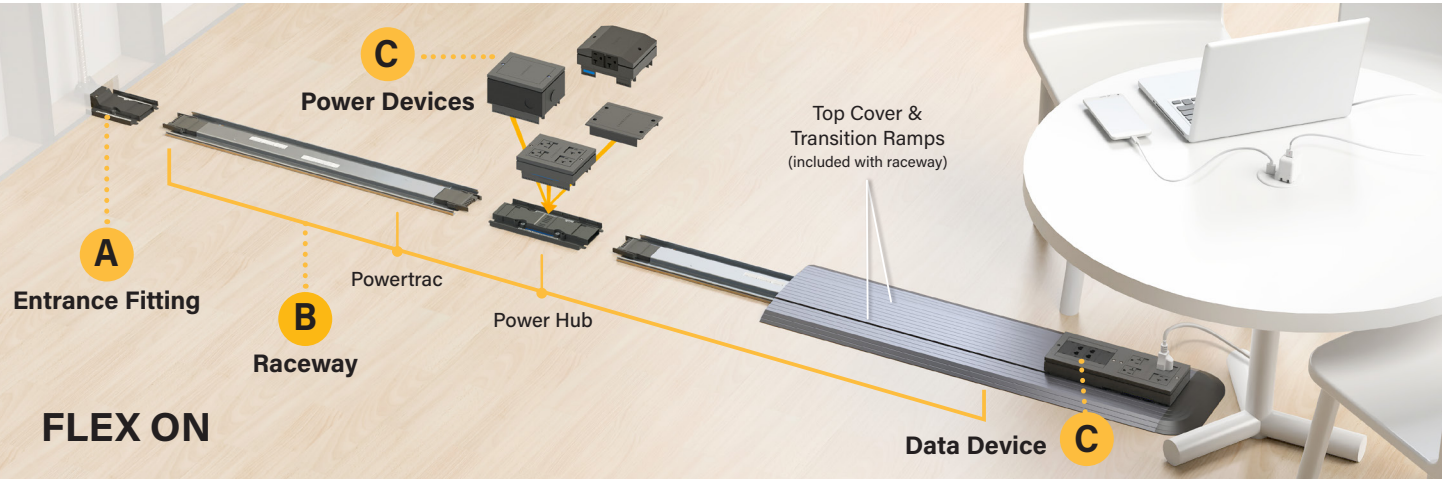
Carpet tiles are installed to reveal an exposed top cover for greater data capacity and easy access to cabling.

Product Specifications

General	
Data Capacity	Powertracs hold 0-6 / Datatracs hold 0-17 data cables
Load Test	The Flex Raceway is designed to withstand 250 lb. individual point loads or a 4-point load of 1,000 lb.
Conduit	7-wire, 4 circuit
Receptacle Device	4 NEMA 5-20R receptacles, PC Plastic
TR Receptacle Device	4 NEMA 5-20R TR receptacles, PC Plastic
Hardwire Device	4 circuit monument
Components	
Entrance Fitting	Steel Conduit - PC Plastic
Wireway - Powertrac	Steel
Wireway - Datatrac	Extruded Aluminum
Top Cover	Extruded Aluminum (Silver finish)
Wall Base Trim	PC Plastic
Data Device	PC Plastic, holds up to 8 keystone modules
Ramps	
End Ramp Assembly	PP Plastic
Transition Ramps	MDF

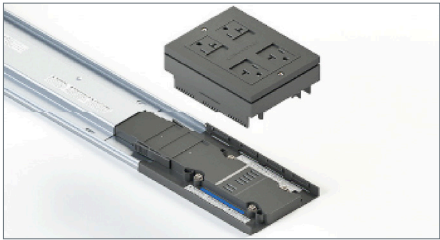


Installation	
To Surface	Screw mount to any subfloor material that is ½" or thicker
System Specifications	
System width	34 inches (single channel)
System length	Max 75'

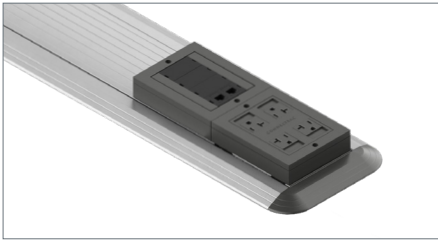


- A) Entrance Fitting:** Quick connector powers entire raceway and allows data to enter.
B) Raceway: Consists of Powertracs (prewired raceway segments) and Power Hubs (connects powertracs and provides access for power devices).
C) Power/Data Devices: Interchangeable Power Devices quickly snap into any Power Hub location. Data Devices go anywhere on the raceway.

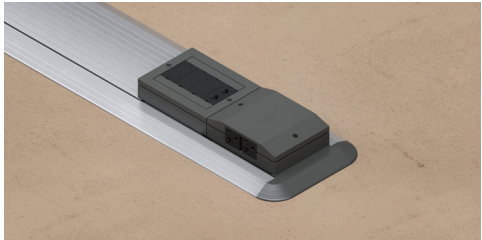
Product Components



Flex Raceways are built by connecting Powertracs with Power Hubs. Receptacle Device snaps into Power Hub.



Data Device snaps next to the Receptacle Device in the raceway. Low-profile ramps transition system to the floor.



Durable anodized aluminum finish. Smallest footprint for on-floor system.

Product Specifications

General	
Data Capacity	Powertracs hold 0-4 / Datatracs hold 0-10 data cables
Load Test	The Flex Raceway is designed to withstand 250 lb. individual point loads or a 4-point load of 1,000 lb.
Conduit	7-wire, 4 circuit
Receptacle Device	4 NEMA 5-20R receptacles, PC Plastic
TR Receptacle Device	4 NEMA 5-20R TR receptacles, PC Plastic
Hardwire Device	4 circuit monument
Components	
Entrance Fitting	Steel Conduit - PC Plastic
Wireway - Powertrac	Steel
Wireway - Datatrac	Extruded Aluminum
Top Cover	Extruded Aluminum (Silver finish)
Wall Base Trim	PC Plastic
Data Device	PC Plastic, holds up to 8 keystone modules
Ramps	
End Ramp Assembly	PC Plastic
Transition Ramps	Extruded Aluminum, Clear Anodized ABS Plastic

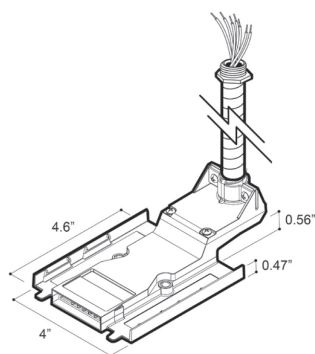


Installation	
To Surface	Screw mount to any subfloor material that is ½" or thicker
System Specifications	
System width	9.4 inches (single channel)
System length	Max 75'

Catalog No./Item	Description/Specifications
------------------	----------------------------

FXEF15TW
15' Conduit

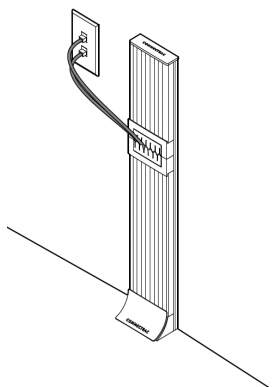
FXEF30TW
30' Conduit



In-Wall Entrance Fitting -
Entrance Fittings are quick connectors that power the entire Flex raceway by converting the building mains power to the Flex 4-circuit power system. The In-Wall Entrance Fitting starts at the wall and is used when power/data cabling is running **INSIDE** the wall. It is attached to a flexible steel conduit that is prewired and available in two lengths (15', 30'). The flexible conduit includes a 1/2" knockout fitting and typically connects to a junction box in the wall or ceiling.

Country of Origin: Taiwan

FXEFS2B-SV
FXEFS12B-SV



Data Channel Walltrac -
A Data Channel Walltrac is an extruded aluminum encasement that sits on the outside of a wall, and connects to a Datatrak. This is used to cover the data cables that come from the building. There are 2 options: FXEFS2B-SV is a 2' Raceway Walltrac & FXEFS12B-SV is a 12' Raceway Walltrac.

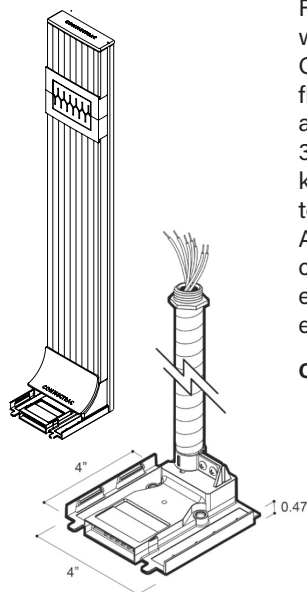
Country of Origin: China

Catalog No./Item	Description/Specifications
------------------	----------------------------

FXEF3S2W-SV
2' Walltrac, 3' conduit

FXEF15S12W-SV
12' Walltrac, 15' conduit

FXEF30S12W-SV
12' Walltrac, 30' conduit



On-Wall Entrance Fittings -
Entrance Fittings are quick connectors that power the entire Flex raceway by converting the building mains power to the Flex 4-circuit power system.
Surface-Mounted Entrance Fitting -
The Surface-Mounted Entrance Fitting starts at the wall and is used when power/data cabling is running **OUTSIDE** the wall. It is attached to a flexible steel conduit that is prewired and available in three lengths (3', 15', 30'). The flexible conduit includes a 1/2" knockout fitting and typically connects to a junction box in the wall or ceiling. All Surface-Mounted Entrance Fittings come with a wall channel kit that encases the conduit in an aluminum extrusion.

Country of Origin: Taiwan

Note: Connectrac Colors: "DG" is Dark Gray and "SV" is Silver finish.

Connectrac Flex Raceway Wire Fill Capacities for Communications								
	O.D. (Approx Dia.)				# of Cables per Powertrac		# of Cables per Datatrak	Max # of Cables Per Poke-Thru Transition
	CABLE/WIRE SIZE	Inches	[mm]	Wire Cross-Sectional Area	CTONP & CTFXP	CTMXP	CTFXD, CTOND, & CTMXD	
UNSHIELDED TWISTED PAIR	4-Pair, 23 AWG, Cat 6	0.250	[6.4]	0.049	4	6	12	18
	4-Pair, 23 AWG, Cat 6A	0.354	[9.0]	0.098	2	3	6	9
COAXIAL	RG6/U	0.270	[6.9]	0.057	3	5	10	15

*System can support up to 2 Datatracs, one on either side of the poke-thru fed Powertrac.

System Components

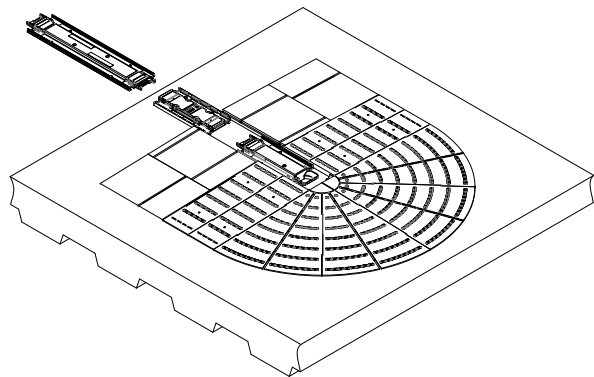
Components Required for Poke-Thru Entrance			
	Required		Optional
	Poke-Thru Transition	Poke-Thru Entrance Fitting	Datatrak Entrance-Supports up to 2 per run
Under-Carpet Installation (FX)	CTPT4	CTFXP	CTFXD
On-Floor Installation (ON)	CTPT4	CTONP-SV (Silver) or CTONP-DG (Dark Gray)	CTOND-SV (Silver) or CTOND-DG (Dark Gray)
In-Floor Installation (MX)	CTPT4	CTMXP-SV (Silver) or CTMXP-DG (Dark Gray)	CTMXD-SV (Silver) or CTMXD-DG (Dark Gray)

Starting a Flex System with a Poke-Thru Entrance Fitting

The Poke-Thru Entrance Fitting is designed to connect directly to a power hub which can be populated with a power device, hardwire device or covered with a hubcap. Powertracs can then be connected from the power hub to extend the length of the raceway. This differs from the wall entrance fittings which are designed to connect directly with a powertrac to start the run.

The fitting can also mate to a corner connector, changing the direction of the run by 90° to the left or right from the poke-thru entrance direction.

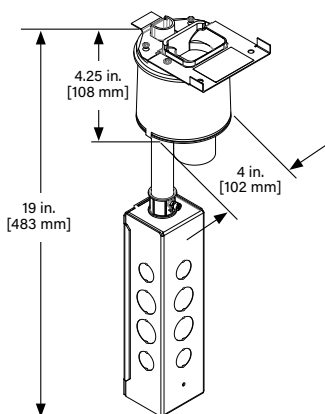
NOTE: This product is only listed to be used in the USA



Catalog No./Item

Description/Specifications

CTPT4



4" Poke-Thru Transition for Connectrac Flex – Poke-Thru specifically designed to be integrated with the Connectrac Flex on-floor or under-carpet raceway. Provides power and data channels for separation of services within poke-thru and provides a 2-hour fire rating classification. Must be used in conjunction with the appropriate on-floor or under-carpet entrance fitting to connect to the Flex raceway system.

Country of Origin: USA

Connectrac Poke-Thru Ordering Information

Catalog No./Item	Description/Specifications	Catalog No./Item	Description/Specifications
CTFXP	<p>Under-Carpet Poke-Thru Entrance Fitting, Powertrac – Pairs with Poke-Thru Transition (CTPT4). Includes all elements needed for a 13" starter section – entrance fitting for powertrac, under-carpet transition ramps and under-carpet raceway cover.</p> <p>Country of Origin: China</p>	CTMXP-SV CTMXP-DG	<p>In-Carpet Poke-Thru Entrance Fitting, Powertrac – Attaches to CTPT4 and is used to start Connectrac Flex with in-carpet installations. Offers additional data cable capacity by utilizing a taller cover which is exposed through carpet with under-carpet transition ramps. Includes all carpet ramps needed for 13" starter section. Available either in Silver (CTMXP-SV) or Dark Gray (CTMXP-DG) finishes.</p> <p>Country of Origin: China</p>
CTONP-SV CTONP-DG	<p>On-Floor Poke-Thru Entrance Fitting, Powertrac – Attaches to CTPT4 and is used to start Connectrac Flex over floor. Includes all ramps needed for 13" starter section. Available either in Silver (CTONP-SV) or Dark Gray (CTONP-DG) finishes.</p> <p>Country of Origin: USA</p>	CTFXD	<p>Under-Carpet Poke-Thru Entrance Fitting, Datatrac – Add additional communication channels to under-carpet poke-thru transition. Installs on left or right-side of poke-thru entrance fitting.</p> <p>Country of Origin: USA</p>
CTOND-SV CTOND-DG	<p>On-Floor Poke-Thru Entrance Fitting, Datatrac – Add additional communication channels to over floor poke-thru transition. Installs on left or right-side of poke-thru entrance fitting. Available either in Silver (CTOND-SV) or Dark Gray (CTOND-DG) finishes.</p> <p>Country of Origin: USA</p>	CTMXD-SV CTMXD-DG	<p>In-Carpet Poke-Thru Entrance Fitting, Datatrac – Add additional communication channels to Poke-Thru transition with in-carpet entrance fitting. Installs on left or right-side of entrance fitting. Available either in Silver (CTMXD-SV) or Dark Gray (CTMXD-DG) finishes.</p> <p>Country of Origin: USA</p>

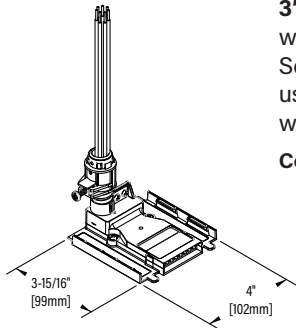
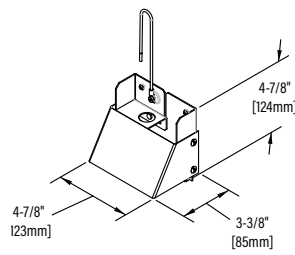
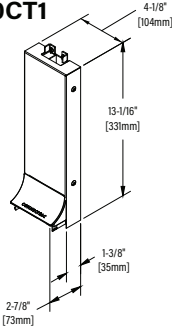
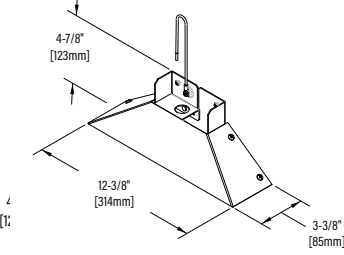
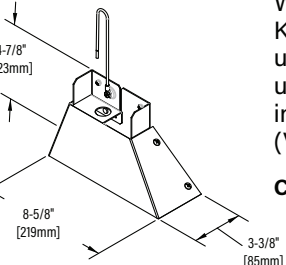
Note: Connectrac Colors: "DG" is Dark Gray and "SV" is Silver finish.

System Compatability Reference

	Connectrac Floor Raceway Systems & Compatible Raceway Transitions			
	Express Kit	1-Channel Flex Raceway	2-Channel Flex Raceway	3-Channel Flex Raceway
4000® Series	*4000CT1	*4000CT1 & CT.A2.2-003.4C	*4000CT2 & CT.A2.2-003.4C	*4000CT3 & CT.A2.2-003.4C
2400D® Series	*2400CT1	*2400CT1 & CT.A2.2-003.4C	Not Available	Not Available

*Note: For 4000 Series Raceway, replace the * with either "G" for Gray or "V" for Ivory finish. For 2400D Series Raceway, replace the * with either "V" for Ivory or "FW" for Fog White finish.

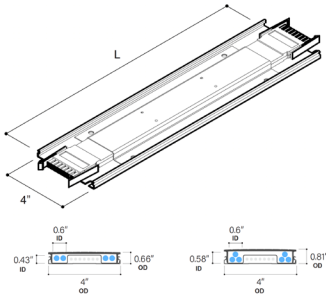
Ordering Information

Catalog No./Item	Description/Specifications	Catalog No./Item	Description/Specifications
FXE3INW 	Flex Entrance End Fitting with 3" Flex Conduit – Compatible with both the 2400D® and 4000® Series transition fittings. Must be used when Flex® Raceway is used with raceway transitions. Country of Origin: Taiwan	G4000CT1 V4000CT1 	4000 Series to Connectrac Transition Fitting, Single Channel. Works with both Flex and Express Kit systems in over the floor and under carpet. Can accommodate up to 28 CAT 6 cables. Available in Ivory (G4000CT1) and Gray (V4000CT1) Country of Origin: USA
V2400CT1 FW2400CT1 	2400D Series to Connectrac Transition Fitting, Single Channel. Works with both Flex and Express Kit systems in over the floor and under carpet. Can accommodate up to 7 CAT 6 cables. Available in Ivory (V2400CT1) and Fog White (FW2400CT1) Country of Origin: USA	G4000CT3 V4000CT3 	4000 Series to Connectrac Transition Fitting, Three Channel. Works with both Flex and Express Kit systems in over the floor and under carpet. Can accommodate up to 28 CAT 6 cables. Available in Ivory (G4000CT3) and Gray (V4000CT3) Country of Origin: USA
G4000CT2 V4000CT2 	4000 Series to Connectrac Transition Fitting, Dual Channel. Works with both Flex and Express Kit systems in over the floor and under carpet. Can accommodate up to 28 CAT 6 cables. Available in Ivory (G4000CT2) and Gray (V4000CT2) Country of Origin: USA		

Ordering Information

Catalog No./Item

FXR2WB
FXR3WB
FXR4WB
FXR5WB
FXR6WB

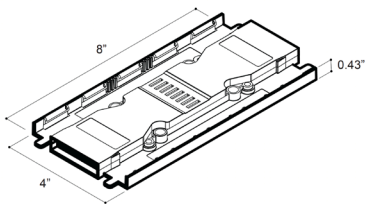


Description/Specifications

Powertrac – Powertracs are prewired raceway segments available in five nominal lengths (2', 3', 4', 5', 6') that are paired with Top Covers and Transition Ramps to make a complete system. Each Powertrac has modular connectors on each end that easily snap into an Entrance Fitting, Powertrac Extender, Powertrac Corner, Power Hub or Power End Hub to build your Flex raceway.

Country of Origin: Taiwan

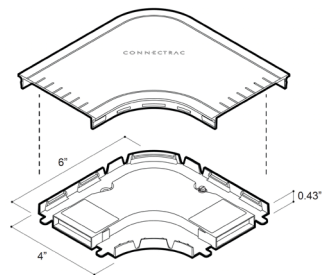
FXHB



Power Hub – A Power Hub provides access to power devices, such as a Receptacle Device. It also has modular connectors on each end that easily snap into a Powertrac or Powertrac Extender to build your Flex raceway.

Country of Origin: Taiwan

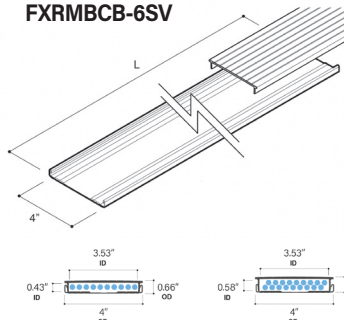
FXUO90W-DG FXM90W-DG



Powertrac Corner – A Powertrac Corner connects Powertracs at a 90° angle. It also has modular connectors on each end that easily snap into a Powertrac or Powertrac Extender to build your Flex raceway.

Country of Origin: Taiwan

FX-XPU-3TB FX-XPU-6TB FXROCB-3DG FXROCB-3SV FXROCB-6DG FXROCB-6SV FXRMBCB-3DG FXRMBCB-3SV FXRMBCB-6DG FXRMBCB-6SV

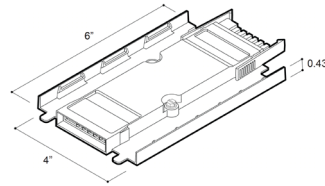


Data channel – Data channels can be ganged alongside the main Flex raceway to provide additional data capacity. Data channels include both a bottom Datatrac and a Top Cover. Each data channel typically holds up to 10 cables for our FX series & ON series and up to 18 cable for our MX series.

Country of Origin: USA

Catalog No./Item

FXEX6IN

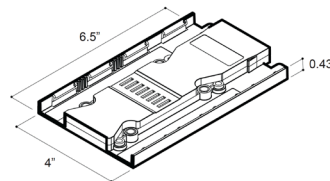


Description/Specifications

Powertrac Extender – A Powertrac Extender adds 6" to any standard Powertrac length. On one end it has modular connectors that easily snap into a Powertrac or Powertrac Extender, and the other end has modular connectors that connect to an Entrance Fitting, Hub or End Hub.

Country of Origin: Taiwan

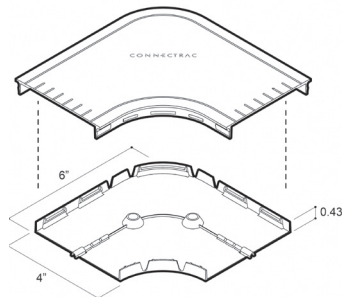
FXEHB



Power End Hub – A Power End Hub MUST be used to end every Flex raceway. It provides access to power devices, such as a Receptacle Device, and has a modular connector on one end that easily snaps into a Powertrac or Powertrac Extender.

Country of Origin: Taiwan

FXUO90B-DG FXM90B-DG

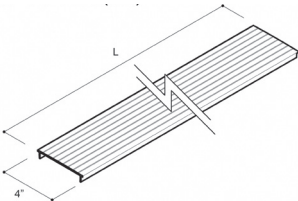
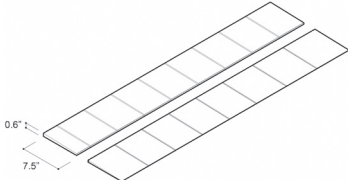
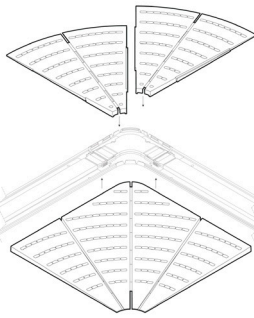
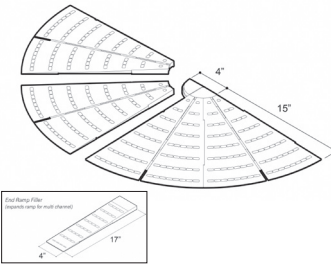
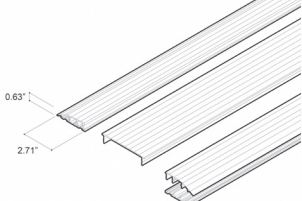
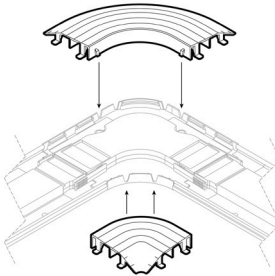
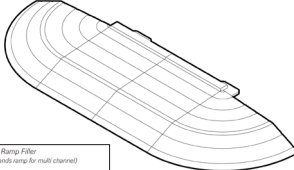


Datatrac Corner – A Datatrac Corner connects Datatracs at a 90° angle. This sits next to a Powertrac, either on the inside or outside.

Country of Origin: China

Note: Connectrac Colors: "DG" is Dark Gray and "SV" is Silver finish.

Ordering Information

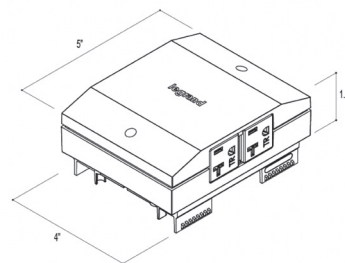
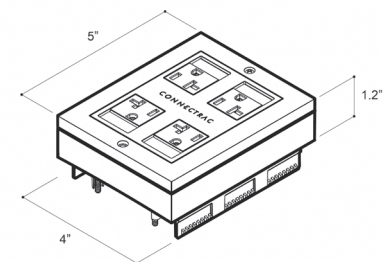
Catalog No./Item	Description/Specifications	Catalog No./Item	Description/Specifications
FXRUC-3 FXROC-3DG FXROC-3SV FXROC-6DG FXROC-6SV FXRMC-3DG FXRMC-3SV FXRMC-6DG FXRMC-6SV	Top Cover – Top Covers complete a system by covering the Powertracs. FX are covered by carpet, MX and ON are visible and available in a standard Dark Gray or Silver finish. Country of Origin: USA	FXLRUM3 FXLRUM6	Transition Ramp (FX, MX) – Transition Ramps sit adjacent to a Powertrac or Datatrak, and provide an ADA compliant transition from the raceway to the surrounding flooring. Country of Origin: USA
			
FXCRMU90	Corner Ramps (FX, MX) – Corner Ramps sit adjacent to Power and Data Corners, and help to transition the flooring material from the raceway to the surrounding flooring. Country of Origin: China	FXERUM FXERFUM	End Ramp (FX, MX) – End Ramps sit at the end of a Powertrac or Datatrak, and help to transition the flooring material from the raceway to the surrounding flooring. Country of Origin: China
			
FXRLROC-3DG FXRLROC-3SV FXRLROC-6DG FXRLROC-6SV	Transition Ramps (ON) – On Floor Transition Ramps sit adjacent to the Powertrac and Datatrak, and provide an ADA compliant transition over the Connectrac Flex Raceway. Paired with On Floor Top Covers. Country of Origin: USA	FXCRO90-DG	Corner Ramps (ON) – On Corner Ramps sit adjacent to the Power and Data corner, and provide a transition over the Connectrac Flex Raceway. Country of Origin: USA
			
FXERO-DG FXERFO-DG	End Ramp (ON) – End Ramps sit at the end of a Powertrac or Datatrak, and help to transition the flooring material from the raceway to the surrounding flooring. Country of Origin: USA		
			

Note: Connectrac Colors: "DG" is Dark Gray and "SV" is Silver finish.

Ordering Information

Catalog No./Item	Description/Specifications
RDQ11-DG RDQ12-DG RDQ14-DG RDQ22-DG RDQ33-DG RDQ34-DG RDQ44-DG RDCQ12-DG RDCQ14-DG RDCQ34-DG	Receptacle Device – A Receptacle Device is a NEMA 5-20R quad power device available in a single/ split circuit with 4 circuit options. Country of Origin: Taiwan

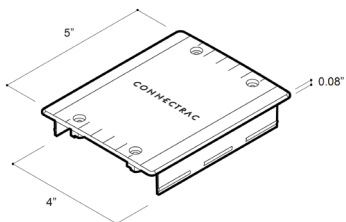
Catalog No./Item	Description/Specifications
RDTRQ11-DG RDTRQ12-DG RDTRQ14-DG RDTRQ22-DG RDTRQ33-DG RDTRQ34-DG RDTRQ44-DG RDTRCQ12-DG RDTRCQ14-DG RDTRCQ34-DG	TR Receptacle Device – A TR Receptacle Device is a NEMA 5-20R quad power device available in a single/ split circuit with 4 circuit options. Country of Origin: China



FXHCU-DG
FXHCO-DG
FXHCM-DG

Hubcap – A Hubcap is a power device that creates a walkable surface and makes power easily accessible for future needs.

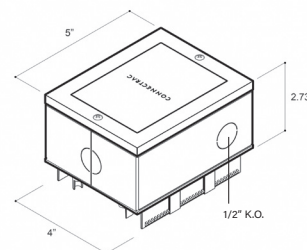
Country of Origin: China



FF4C-DG

Hardwire Device – A Hardwire Device is a 4-circuit monument that can be wired to connect to most furniture base feeds or other similar applications. This power device is NOT intended to have electrical components such as power outlets/faceplates/switches, mounted directly to it. Includes 1/2" K.O.

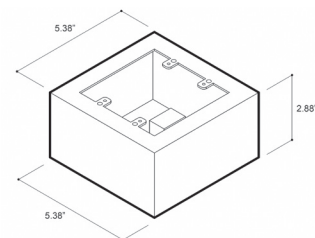
Country of Origin: Taiwan



FX-XP-AV-DG

A/V Device – An A/V Device is a customizable data device that holds any standard double-gang faceplate.

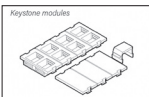
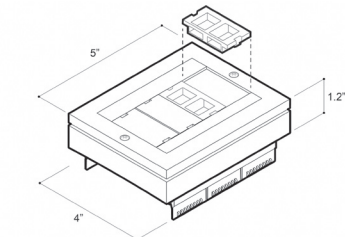
Country of Origin: USA



FXDD-DG

Data device – Data devices easily snap into a Powertrac or Datatrac. They can be installed anywhere on the raceway but look best when positioned next to power devices. The Flex system's main Data Device is customizable and fits up to 8 low-voltage keystone modules. Features a pop-up modular bay.

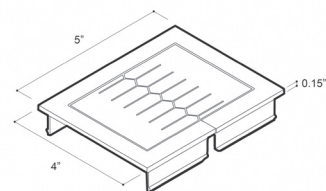
Country of Origin: China



FX-XP-FG-DG

Grommet – The Grommet allows cables to enter/exit the raceway.

Country of Origin: China



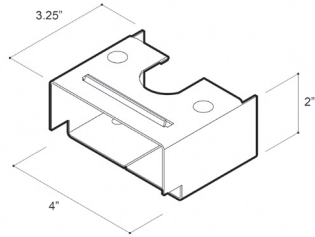
Note: Connectrac Colors: "DG" is Dark Gray and "SV" is Silver finish.

Ordering Information

Catalog No./Item

Description/Specifications

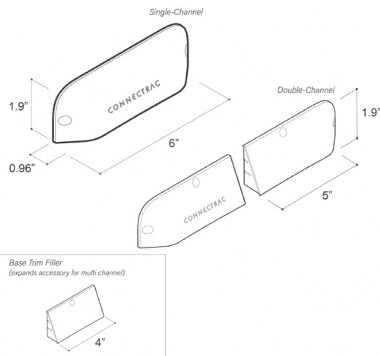
FX-XP-RIF



Rough-In Frame – The Rough-in Frame is used in a building during new construction. It is put in place prior to the wall being put up, marking the placement of the Flex system.

Country of Origin: Taiwan

FX-XP-TR1-DG FX-XP-TR2-DG FX-XP-TRF-DG



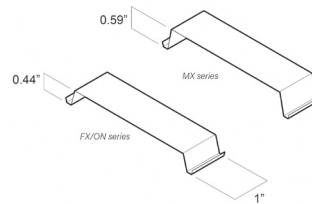
Base Trim – A Base Trim covers the hole in the wall and is placed at the entrance of the raceway. FX-XP-TR1-DG is for a single-channel raceway, FX-XP-TR2-DG is for double-channel raceway, and FX-XP-TRF-DG is a base trim filler accessory to expand base trim to accommodate 3 or more channels. Available in Dark Gray.

Country of Origin: China

Catalog No./Item

Description/Specifications

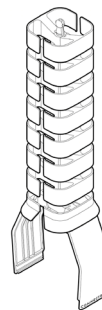
FXUOCLIP FXMCLIP



Wire Management Clips – Data clips snap into the Powertrac and Datatrac, and are used to hold data cables in place. FXUOCLIP is for: Flex/Express/Flex-On. FXMCLIP is for Flex-MX.

Country of Origin: Taiwan

FX-XP-VWM-DG



Vertical Wire Manager – The Vertical Wire Manager seamlessly snaps to the Receptacle and Data devices for easy cable management. It can be adjusted to fit either the long or short way on a device, and can slide to cover the area desired. Accommodates work surfaces between 30" - 48" in height of the floor.

Country of Origin: China

Note: Connectrac Colors: "DG" is Dark Gray and "SV" is Silver finish.