



BLISS

Floorplan



BLISS

Floorplan



Modern Desert Elegance

Bold curb appeal meets clean design with this striking elevation—featuring a long driveway, vertical wood accents, and a massive 18 ft X 8 ft garage door. Set on a spacious 12,023 sq. ft. lot, this home combines sleek architecture with low-maintenance desert landscaping and direct Organ Mountain views.

Curated Interiors

From the wood-detailed foyer to the designer great room with exposed beams and a modern fireplace wall, every inch feels elevated. A chef-inspired kitchen stuns with wood cabinets, quartz island, stainless steel appliances, and a butler's pantry.

Bonus Feature: Built-in doggy shower in the utility room.

Private Owner's Wing

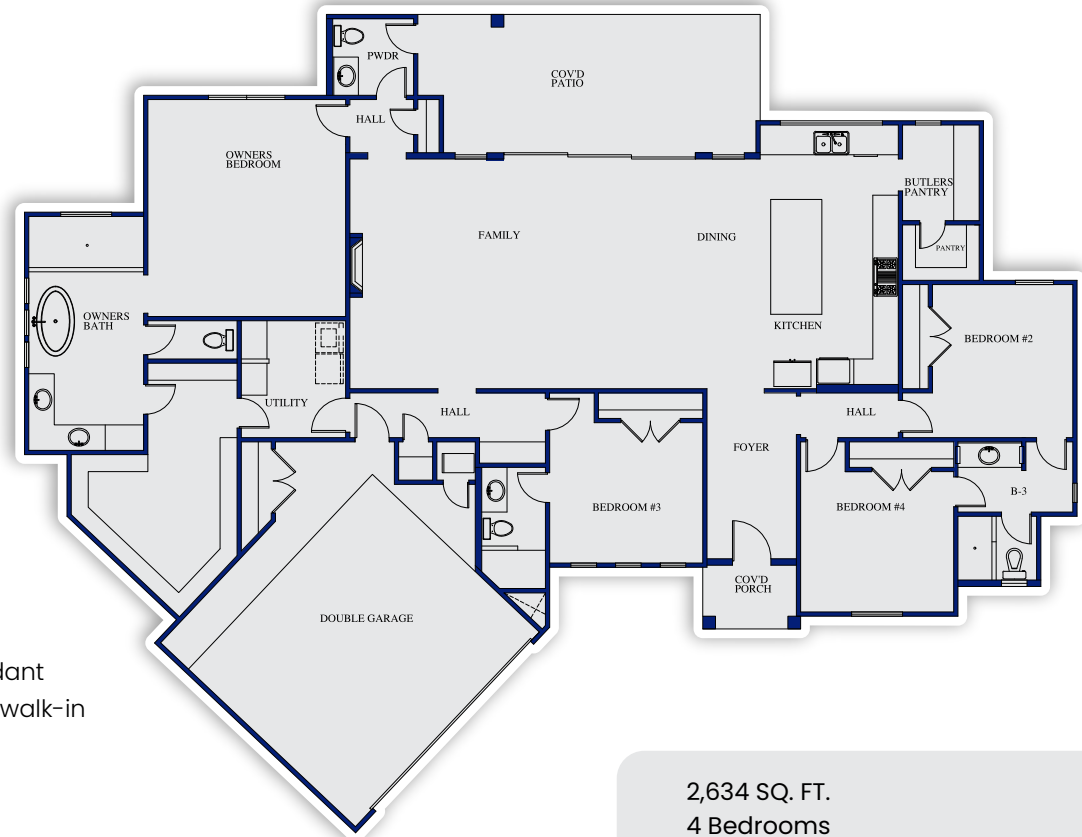
Retreat to a serene bedroom with incredible ceiling design, integrated pendant lighting next to bed, and a spa-style bath complete with free-standing tub, walk-in shower, and a spacious, designer-crafted custom closet.

Smart Bedroom Layout

Bedrooms #3 & #4 share a stylish & uniquely designed "Jack & Jill" bath, each with private entrance. Bedroom #2 has its own full bath, perfect for guests or office space.

Outdoor Ready

The backyard is entertainer-approved with complete outdoor kitchen, fully landscaped front & back and unmatched mountain views.



2,634 SQ. FT.
4 Bedrooms
3 Bathrooms
2-Car Garage

\$712,000.00

Inspired by You. Built by ICON.
Let's Create the Home You've Been Dreaming Of.

Follow us on
Social Media

