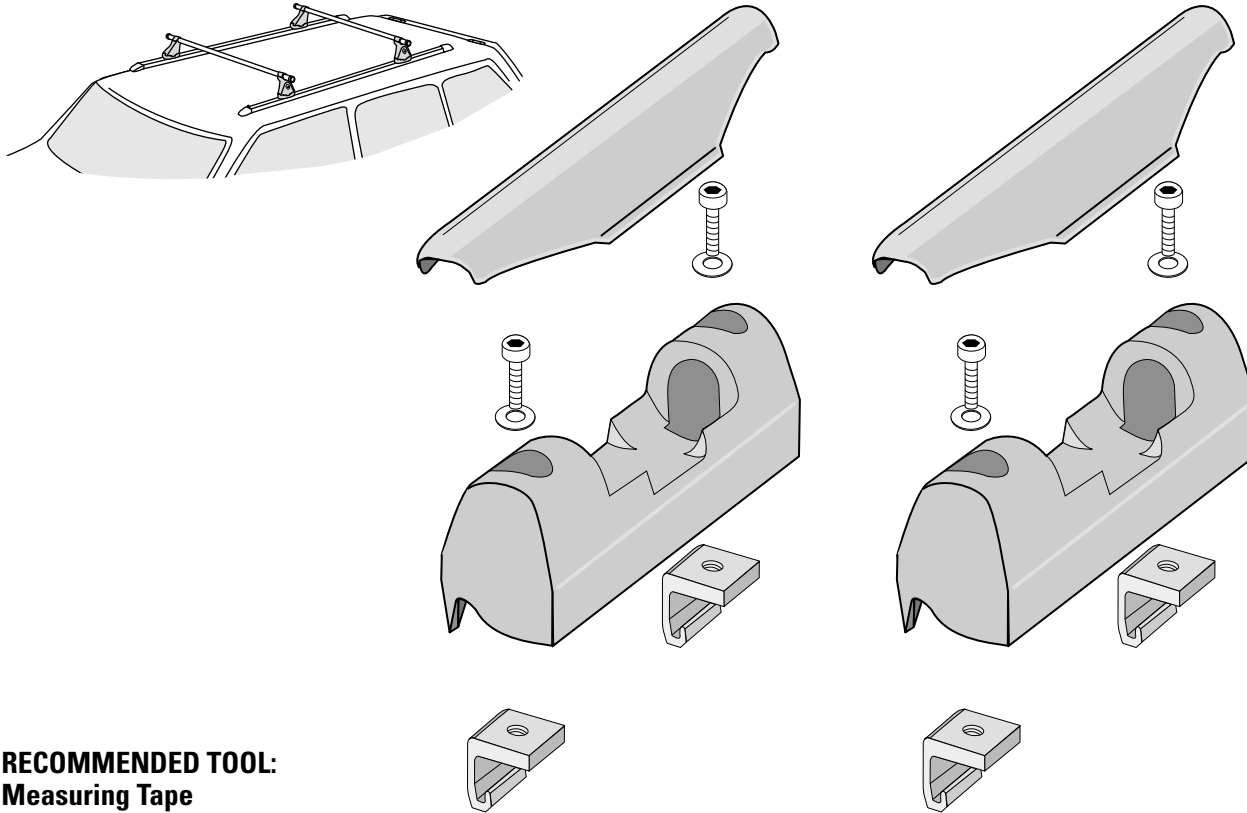


YAKIMA Landing Pad #3



Refer to YAKIMA Control Tower instructions for important warning and load limitations, and YAKIMA's limited warranty.



RECOMMENDED TOOL:
Measuring Tape



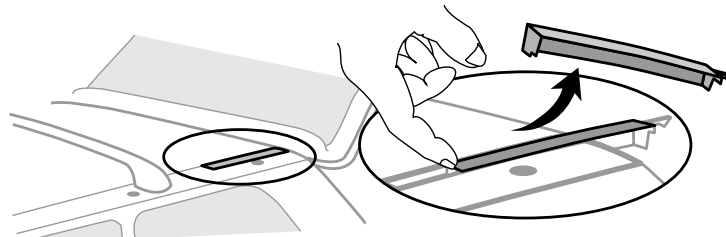
You may need to remove your vehicle's factory crossbars and slats. Check to see if Landing Pad location will cause interference. Refer to your vehicle's owner's manual for details on factory rack removal.

- 1 BEFORE YOU BEGIN:**
It is recommended that you remove the factory crossbars.

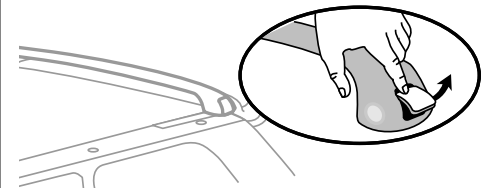


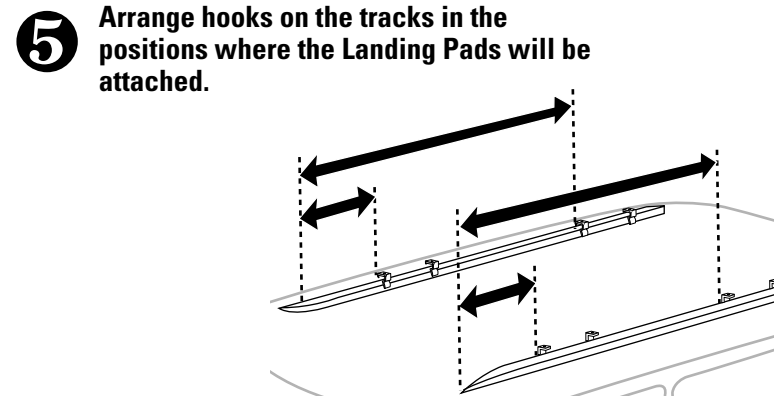
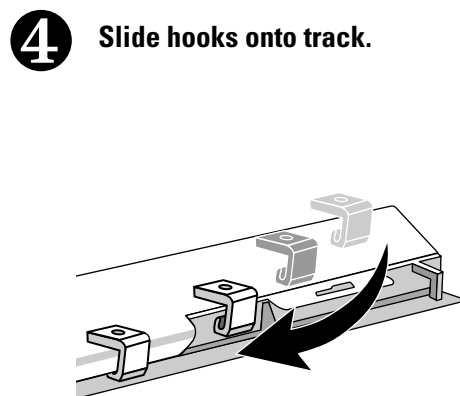
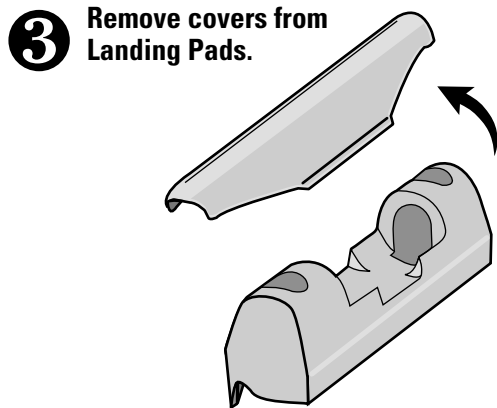
For removal, refer to your vehicle owner's manual.

- 2 TO REMOVE FACTORY-INSTALLED RACKS:**
- Open rear hatch door.
 - Pry up the track cover-plate.



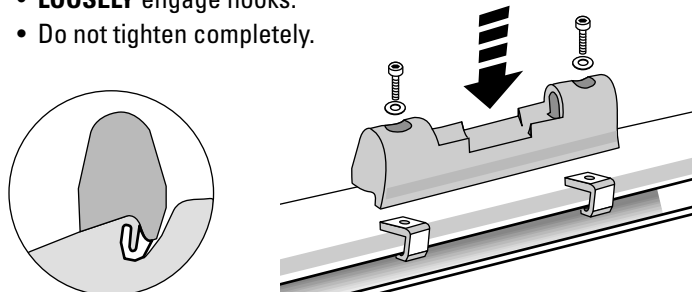
- Pushing tower lever open, slide vehicle's crossbar off.



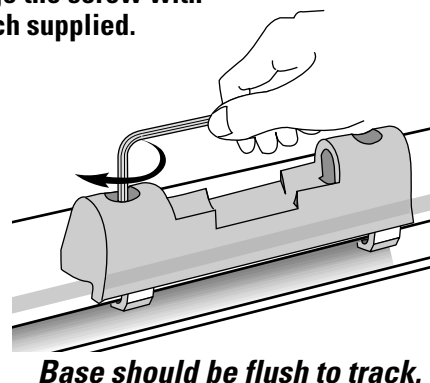


6 Attach Landing Pad to hooks.

- Insert washer and screw.
- **LOOSELY** engage hooks.
- Do not tighten completely.



7 Engage the screw with wrench supplied.



Base should be flush to track.

NOTE:
Do not fully tighten. Final adjustments can be made after Control Tower is installed.

8 Installation Tips:

CROSSBAR SPREAD:

The distance between the Yakima crossbars is determined by the accessories you wish to carry.

The Crossbar Spread Table (Fit List or Catalog) will tell you how much crossbar spread your accessories require.

LOAD LOCATION:

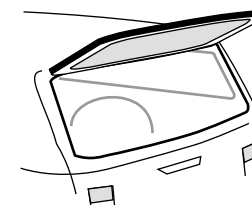
For ease of loading, consider where the most convenient placement of your load would be before completing the installation.

LOAD LIMITS: Limit your loads to skis, bikes, boats, gear baskets and SpaceCadets. No long loads that cannot be tied down at the ends!



USE CAUTION WHEN OPENING YOUR HATCH.

On some vehicles, hatch interference with accessories is unavoidable.



YOU ARE NOW READY TO PROCEED TO CONTROL TOWER INSTRUCTIONS.