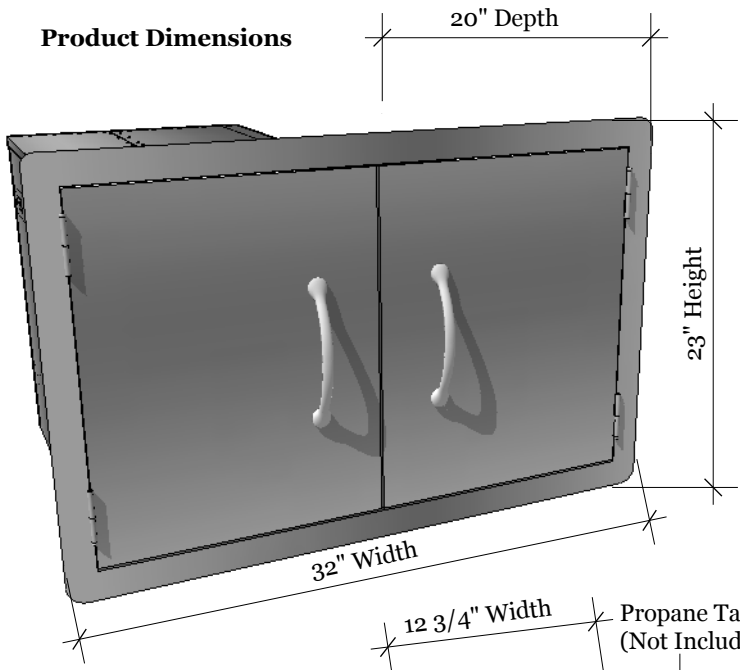
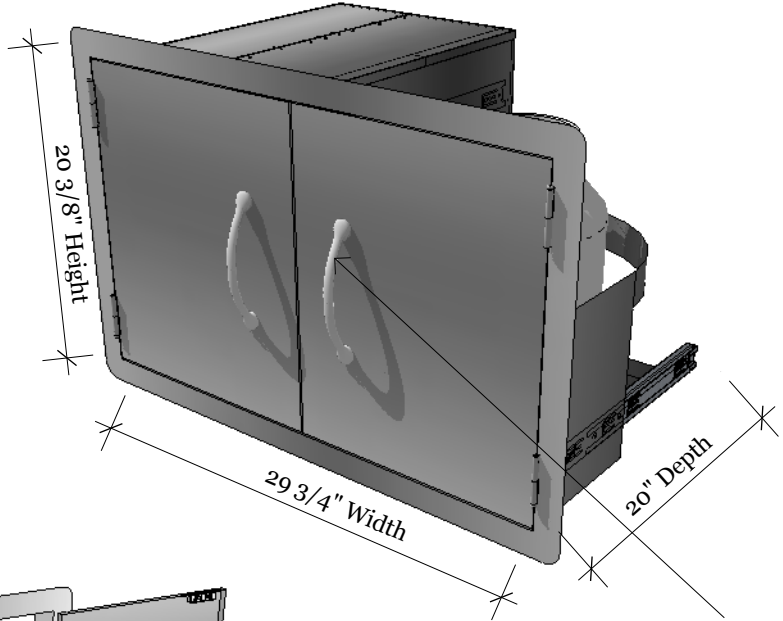


Product Dimensions



Cut-out Dimensions



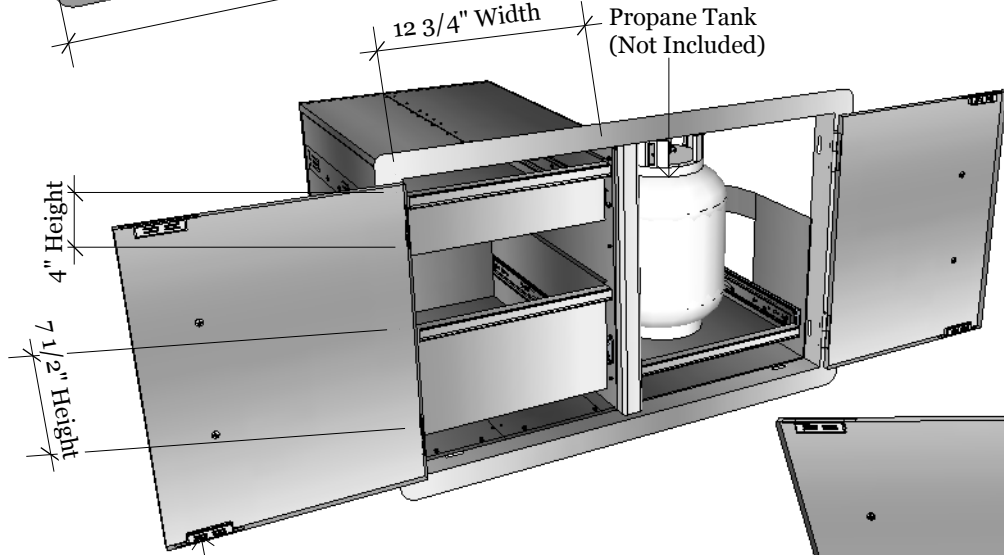
Texas BBQ Wholesalers
 13802 Dragline Dr.
 Austin, TX. 78728
 Tel: 888.934.9449
 Bus: 512.487.5116
 Fax: 512.487.7016

PRODUCT
 SUN DOUBLE DOOR/TANK TRAY COMBO
 Item No. A-LPDC

DESCRIPTION
 304 stainless construction, flush mounted. Drawers are fully enclosed. Propane tank storage is open in the back to allow for ventilation.

Double Door/Tank Tray Combo Drawers
 32" W x 23" H x 20" D (Product Size)
 29-3/4" W x 20-3/8" H x 20" D (Cut-out)
 60.5 LBS (Weight)

Material Specifications:
 304 stainless steel
 16 Gauge for Frame and Panel.
 20 gauge 201 SS for Box.
 Handles are made of zinc alloy, chrome plated.

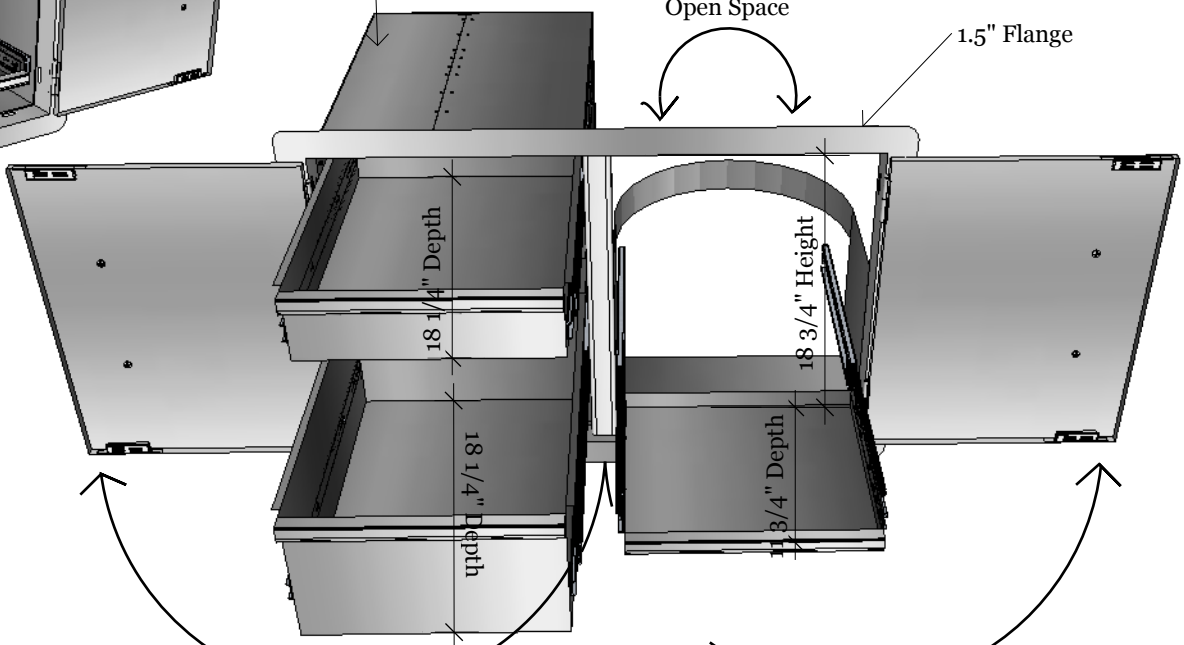


Door Handles are spaced in, to for more secure door opening and closing.

Fully Enclosed Drawer Box

Open Space

1.5" Flange



Top & Bottom Door Clip-on Magnets

Propane Tank Drawer is on Right Side for easy gas-line installation

180 Degree

180 Degree