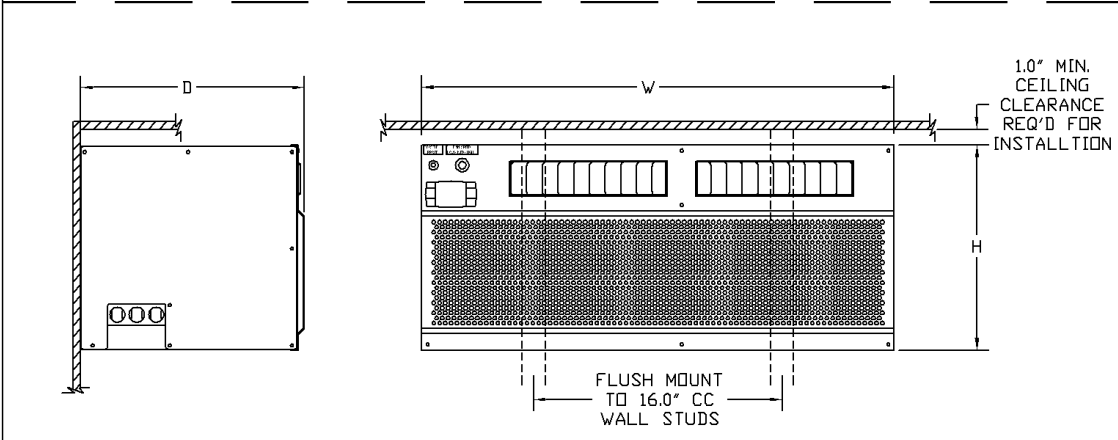


3000S / 4000S EVAPORATOR



3000Sh / 4000Sh / 6000S / 8000S EVAPORATOR

NOTE:  
ELECTRICAL AND REFRIGERATION KNOCKOUTS  
AVAILABLE TOP LEFT, BACK LEFT, OR SIDES.  
REFER TO KNOCKOUT DETAIL DRAWING.

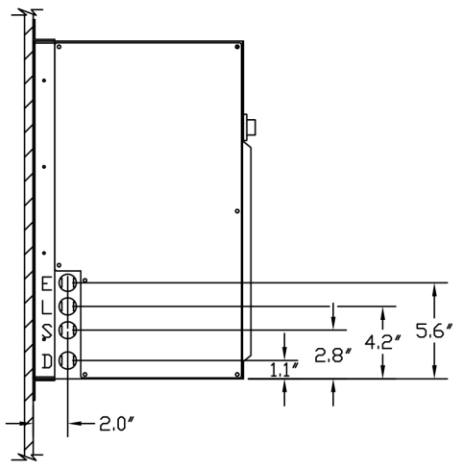
1452R07



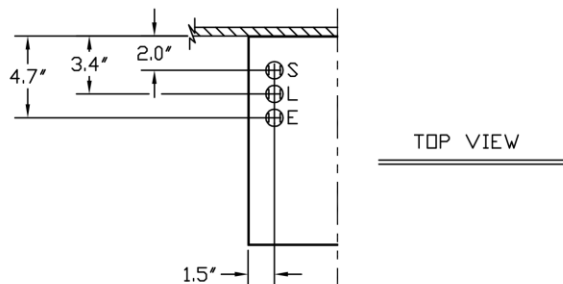
<b>Evaporator</b>			
<b>Model</b>	<b>Dimensions W x D x H (inches)</b>	<b>Weight (lbs.)</b>	<b>Running Amps (with fan on "high")</b>
3000S	16.6 x 12.6 x 22.1 (incl. mounting brackets)	40	6.2
3000Sh	30.4 x 14.4 x 13.2 (incl. mounting bracket)	63	6.2
4000S	16.6 x 12.6 x 22.1 (incl. mounting brackets)	42	8.9
4000Sh	30.4 x 14.4 x 13.2 (incl. mounting bracket)	65	8.9
6000S	30.4 x 14.4 x 13.2 (incl. mounting bracket)	68	13.1
8000S	46.4 x 14.4 x 13.2 (incl. mounting bracket)	85	15.4



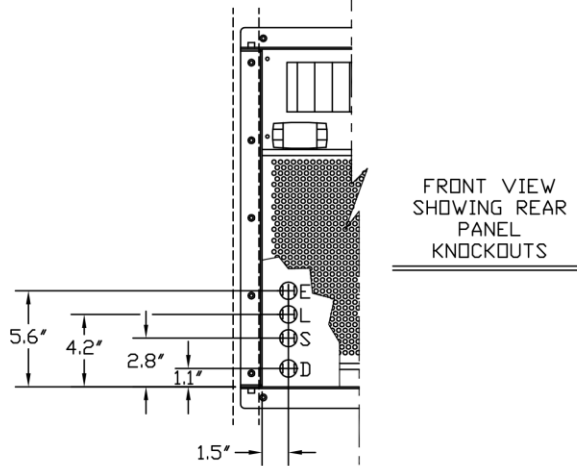
KNOCKOUT LEGEND:  
L = LIQUID LINE  
S = SUCTION LINE  
E = ELECTRICAL CONDUIT  
D = DRAIN LINE  
ALL KNOCKOUTS 7/8"



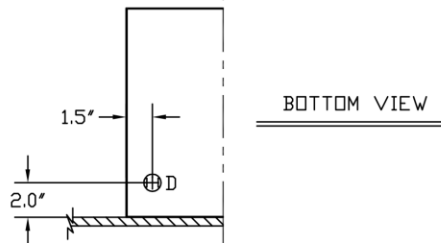
LEFT AND RIGHT SIDE



TOP VIEW



FRONT VIEW  
SHOWING REAR  
PANEL  
KNOCKOUTS



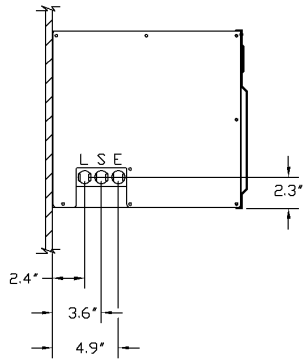
BOTTOM VIEW

3000S / 4000S EVAPORATOR KNOCKOUT DETAIL

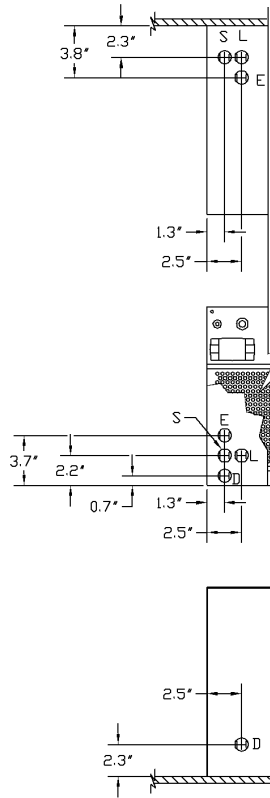
1479R01



KNOCKOUT LEGEND:  
L = LIQUID LINE  
S = SUCTION LINE  
E = ELECTRICAL CONDUIT  
D = DRAIN LINE  
ALL KNOCKOUTS 7/8"



LEFT AND RIGHT SIDE



TOP VIEW

FRONT VIEW  
SHOWING REAR  
PANEL  
KNOCKOUTS

BOTTOM VIEW

3000Sh / 4000Sh / 6000S / 8000S  
EVAPORATOR KNOCKOUT DETAIL

1480R01