



HEADQUARTERS

C.O.B.O. SPA
Via Tito Spert, 10 - 25024 Leno (Brescia) ITALY
Phone +39 030 90451 - **Fax** +39 030 9045330



info@cobogroup.net | www.cobogroup.net

Le informazioni contenute nella presente informativa hanno scopo puramente indicativo.
L'Azienda si riserva senza preavviso il diritto di apportare qualsiasi modifica tecnica del prodotto.
The information published in this catalogue is purely indicative. The Company reserves the right to introduce all technological changes of the present product at any time and without prior notice.



COBO **AGRI**
INTOUCH
HERE AND NOW



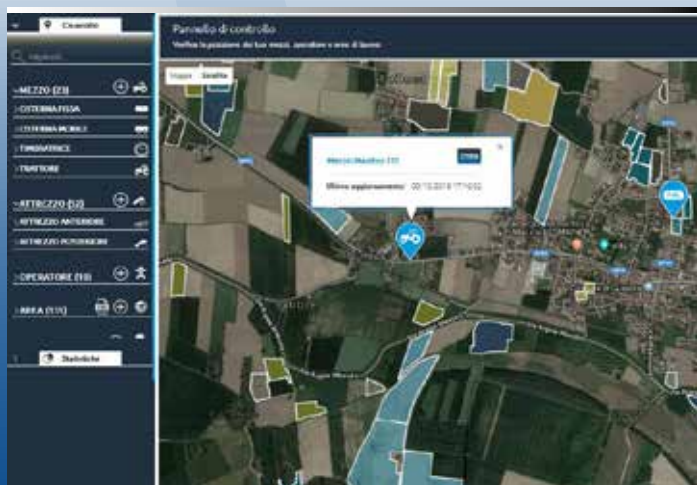
DIGITAL FARMING 4.0



The connected system that simplifies and facilitates your daily work

- Main data of fields and automatic calculation of the surface area and dimensions
- Paths and routes of vehicles with data and travel and consumption statistics
- Automatic recognition of tools and work in the field
- Management of operators
- Monitoring of the consumption of vehicles and tanks
- Detailed reports and statistics of work and consumption
- Management software with automated data entry

All this allows the reporting and measurement of the company's profitability, fundamental assistance to improve the efficiency and productivity of your work.



COBO INTOUCH AGRI

The integrated and connected INTOUCH AGRI system is used to digitise the farm, obtaining significant advantages in terms of the saving of costs and time, improved control of activities and greater profitability. The "4.0" technologies that pervade agriculture in the short term will allow the Made in Italy concept to maintain the excellence it deserves. Be the protagonist of the evolution and success of Italian Agriculture together with us!



DIGITAL FARMING means fitting your resources with sensors to allow entrepreneurs, owners of farms and contractors to:

- AUTOMATICALLY recognise which and to what extent vehicles, tools, fuel tanks and employees have been employed in the various processes on a daily basis.
- CONSTANTLY monitor their company and business without having to assign specialist personnel, collect paper, depend on the records and on the memory of employees and without needing to manually introduce data into the system hoping it has been carefully and responsibly collected.
- Have COMPLETE TRACEABILITY of the resources and the correct attribution of the costs, necessary conditions to guarantee precise accounting and an accurate income statement.
- Allow each agricultural company to MEASURE THE PROFITABILITY of its land and vehicles, to assess the importance of its customers, the yield of the resources used and the investments made or to be planned.

To find out more:



COBO INTOUCH AGRI
e Digital Farming 4.0



www.cobointouch.net



www.cobogroup.net