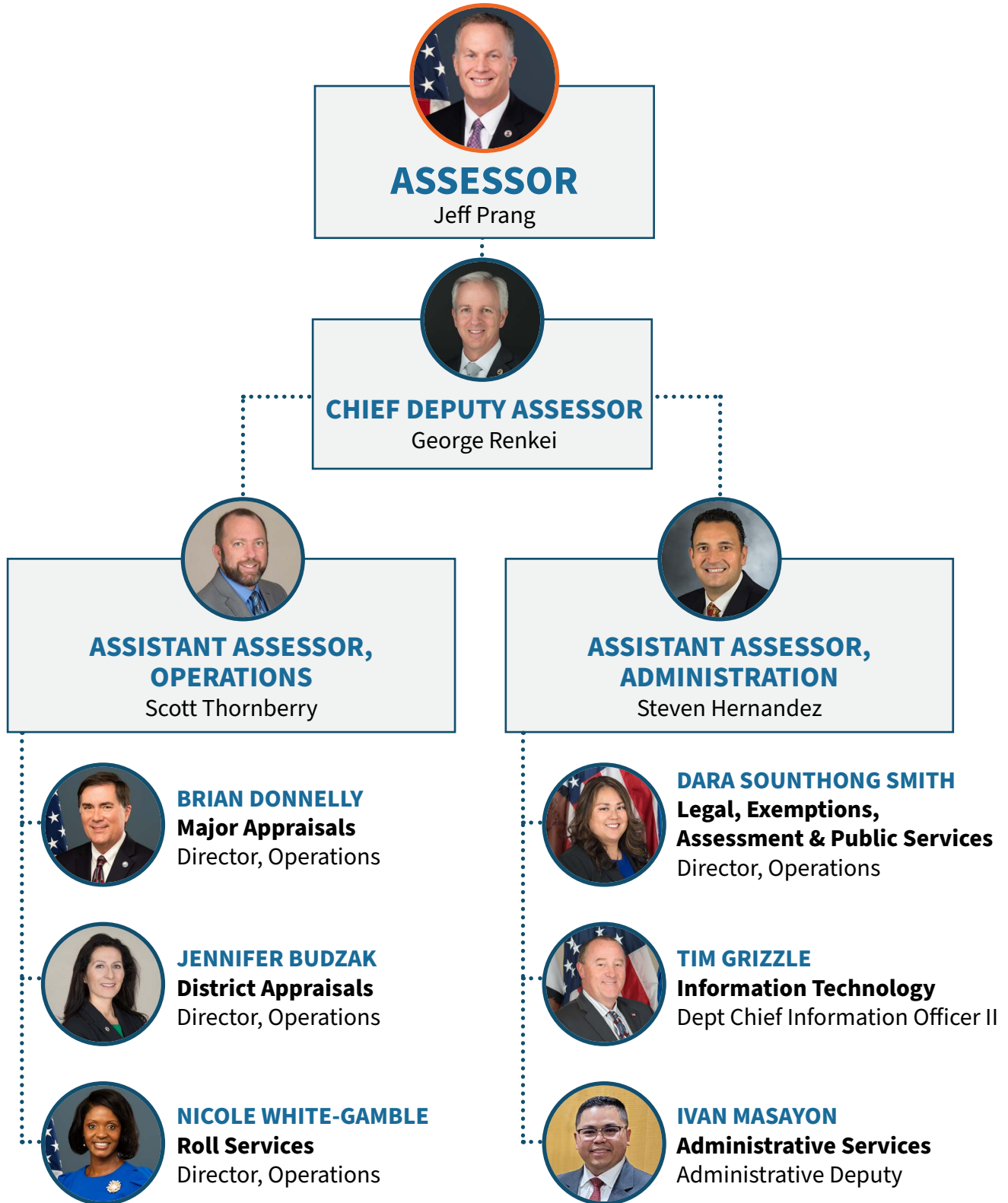


ORGANIZATION CHART EXECUTIVE TEAM



ORGANIZATION CHART

SENIOR MANAGEMENT TEAM

MAJOR APPRAISALS



MARK NEWKIRK
Major Real Property
Chief Appraiser



SHERYL TAYLOR
Major Personal Property
Chief Appraiser

DISTRICT APPRAISALS



TERRI ERSKIN
East District
Chief Appraiser



NEIL NAJJAR
South District
Chief Appraiser



JERRY HOUSE
West District
Chief Appraiser



ANITA DRUMMOND-SEPOLEN
North District
Chief Appraiser

ROLL SERVICES



JEFF MEYER
Ownership
Chief Appraiser



MATTHEW HERRERA
Business Solutions & Standards
Chief Appraiser

LEAPS



FRANK DIAZ JR.
Assessment and Public Services
Chief Appraiser



ANTONIO CASTRO
Legal Services & Major Exemptions
Chief Appraiser



TED OLGUIN
Public Affairs & Communications
Chief of Staff, Public Affairs

INFORMATION TECHNOLOGY



KEVIN LECHNER
Information Technology
Assistant Chief Information Officer



ANDREW YIM
DevOps, AMP Admin & Cloud Services
Info Tech Manager II



VINCE DIEP
Information Security
Dept Information Security Officer I



JAMES KULBACKI
Geo. Information System-Mapping
GIS Manager II

ADMINISTRATIVE SERVICES



JOSEPH VICENTE
Training
Chief Appraiser



BRIAN ZEPEDA
Human Resources
Chief, Human Resources



EVA MORA
Management Services
Chief, Management Services

ORGANIZATION CHART

PUBLIC AFFAIRS & COMMUNICATIONS TEAM

DARA SOUNTHONG SMITH



Director, LEAPS
dsmith@assessor.lacounty.gov

TED OLGUIN



Chief of Staff, Public Affairs
tolguin@assessor.lacounty.gov

ROBERT ISOZAKI



Assistant Chief -
Constituency Service
risozaki@assessor.lacounty.gov

IRANTZU PUJADAS



Special Assistant -
Intergovernmental Relations,
Legislation & Advocacy

STEPHEN WHITMORE



Public Information Officer
swhitmore@assessor.lacounty.gov

EL CID DE RAMUS



Special Assistant - Community Outreach
HOA/City of Los Angeles
ederamus@assessor.lacounty.gov

ANNE-MARIE WILLIAMS



Special Assistant - Field Deputy
North District
awilliams@assessor.lacounty.gov

IAN MAY



Special Assistant - Field Deputy
West District
imay@assessor.lacounty.gov

VACANT



Special Assistant - Field Deputy
South District

VACANT



Special Assistant - Field Deputy
East District