



Wiring Accessories

Combo Smoke & Heat Alarm

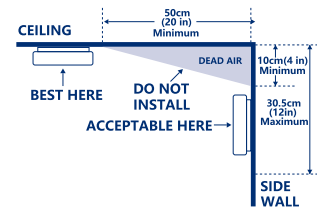
Safety Warning:

For your safety, this product must be installed in accordance with local Building Regulations. **This product MUST be installed by a competent person who is registered with an electrical self-certification scheme.** Further information is available online or from your Local Authority. Please read carefully and use in accordance with these safety wiring instructions. Before commencing any electrical work ensure the supply is disconnected, and securely locked off. Wiring should be in accordance with the latest edition of the IET regulations [BS 7671]. Alarm is suitable for BS 5839-6 requirements for Grade D systems.

Recommended locations for alarms:

- Combined Smoke and Heat alarms are ideal for use in loft or attic spaces, and are required for photovoltaic installations where the inverter is fitted.
- When mounting on the ceiling, the distance from the side wall to the alarm should be over 20" (50cm) from the side wall (see diagram 1).
- When mounting the alarm on the wall, use an inside wall with the top edge of the alarm at a minimum of 10cm and a maximum of 30.5cm below the ceiling. (See Diagram 1).

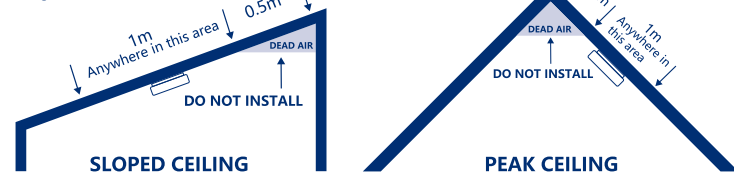
Diagram 1



Do not install the alarm in the following places:

- At the top of high pointed ceilings or in ceiling corners, or within 50cm of a wall.
- In rooms where the temperature never exceeds 0°C - 40°C Place the Combined Smoke & Heat alarm where it is reachable for easy maintenance. (See Diagram 2)

Diagram 2



- For single floor plan and multiple floor plan, please refer to diagram 3

Optimum protection-for dwellings where occupants may be at high risk (e.g. elderly): Same as basic protection, but in addition Smoke or Heat Alarms should be located in all rooms and other areas of the dwelling. (apart from toilets or bathrooms). Interconnect all Alarms

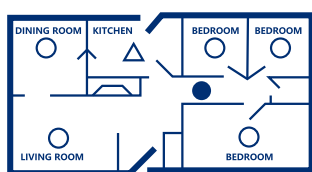
Basic Protection-for new or materially altered dwellings or existing dwellings with poor structural fire precautions: Smoke or Heat Alarms in all rooms or areas that present a high fire risk to occupants. (apart from toilets or bathrooms). Interconnect all Alarms

Minimum Protection: Alarms in all hallways, stairways and circulation areas that form part of the escape routes from the dwelling.

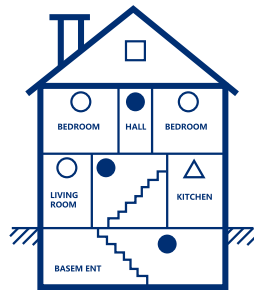
Diagram 3

- Smoke Alarms for Minimum Protection
- Smoke Alarms for Additional Protection
- △ Heat Alarm
- Smoke&Heat Combo Alarms

SINGLE FLOOR PLAN



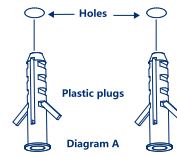
MULTIPLE FLOOR PLAN



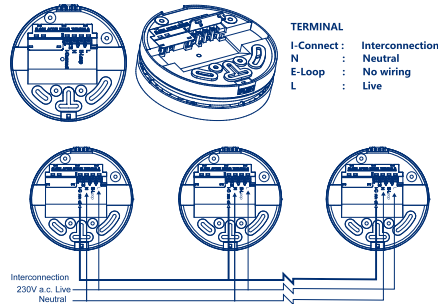
- To limit false alarms as laid within BS 5839-6, it is recommended that smoke alarms should not be installed within 900mm (3') of the following: the door to a kitchen, the door to a bathroom containing a bath or shower. If space restrictions prevent this, it must not be located closer than 300mm (12") from the side wall.
- Alarms should be positioned away from forced air supply ducts used for heating or cooling, ceiling or whole house ventilating fans, or other high air flow areas.
- Do not install within 300mm of light fittings.
- If positioning the alarm in the loft space, it must be easily accessible. Ideally, from the loft hatch.
- Ideally, where possible, mount the alarm on a horizontal surface in the loft space.
- Alarms should be positioned at least 1m away from any electrical/electronic equipment such as PV inverters and connected cabling.

Mounting Instructions:

- Turn off the AC power;
- Select the location for your heat alarm.
- Press the base on the installation position, mark installation hole of the bracket with pencil.
- Drill two installation holes with 5mm drill bit. Fit the two plastic plugs into the holes with a hammer. (See diagram A)



- Wire the Live, Neutral and Interconnection wire according to the wiring instructions.



WARNING:

- ENSURE THE WIRING METHOD IS CORRECT, WRONG CONNECTIONS WILL DAMAGE THE ALARM. DO NOT CONNECT LIVE OR NEUTRAL TO THE INTERCONNECT TERMINAL.
- All interconnected alarms must be on the same circuit
- A common Neutral must be used for the interconnection to function
- Maximum number on interconnected alarms: 24 (or 12 if your system includes a CO alarm)
- Maximum wiring length between first and last alarm: 150m
- Recommend to use connecting wires of cross sectional area from 0.4mm² to 1.5mm², or according to local wiring standard.
- Use the terminal to connect AC main power supply. The terminal should allow the connection of conductors having nominal cross sectional areas of between 0.4mm² and 1.5mm².
- DO not connect these Alarms to any other model produced by another manufacturer. Doing so may damage the Alarms and could result in a shock or fire hazard
- Combo Smoke & Heat alarm is not suitable for use as a fire safety device unless it is part of a planned fire safety system

- Attach the base to ceiling using the screws provided. (See diagram B)
- Activate the back up battery - remove the back up battery pull tab before closing the alarm body.
- Close the alarm body (See diagram C)

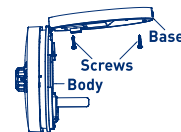


Diagram B

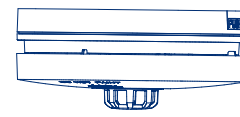


Diagram C

- Test the alarm for correct operation using the test facility.

Interlinking with other alarms

- A maximum of 24 alarms can be hardwired in a system
- A maximum of 48 combo Smoke & Heat alarms (SDMHOA only) can be wirelessly interlinked (see wireless instructions section)
- This alarm can be installed in a hybrid system containing hardwired and wireless alarms. It is recommended that each system of hardwired alarms is only hardwired to one wireless alarm, which can then interlink wirelessly with other wireless products.

Wireless Instructions

- This Combo Smoke & Heat alarm is fitted with a wireless RF module which allows it to connect to other Wireless BG Combo Smoke & Heat alarms, and to connect to the BG wireless remote SDMREM. This allows you to create a hybrid system with combination or wired and hardwired alarms in your installation, and this allows you to test and silence this alarm remotely when using the wireless remote - ideal when installed in loft spaces.
- A hybrid system can contain up to 24 hardwired alarms and 48 wirelessly interlinked alarms.
- Please note: if you are adding this product to an alarm system which contains BG hardwired alarms SDMOA, SDMHA or SDMCO the alarm will need to be hardwired into the system as these BG alarms do not have wireless functionality.
- To set up the wireless network, quickly press the test button 3 times within 2 seconds. The red LED on the alarm will light up to show the alarm is ready to be paired with other wireless alarms and/or accessories. The next alarm or accessory must be added to the system within 30 seconds, otherwise the network pairing mode will time out.
- To add another wireless alarm to the network, press the alarm test button 3 times within 2 seconds. The second alarm should automatically pair with the first. Successful pairing will be confirmed by a single LED flash and a beep.
- When a new alarm is added, the network pairing time will extend by 30 seconds, allowing you to add more alarms to the system.
- When you have added all of your wireless alarms to the system, wait for 30 seconds so the alarms exit the network pairing mode. To test the wireless interlinking, press and hold the test button on any alarm in the network.
- To remove an alarm from an existing network, press the alarm test button 5 times within 2 seconds, then press and hold the test button immediately after the LED flashes. The alarm will beep once to indicate that it has been reset and removed from the network.

Prepare an escape plan

- Make a floor plan which shows all doors and window, with at least two escape routes from each room.
- Have a meeting with all occupants to discuss the escape plan, showing everyone what to do in case of a fire.
- Designate a place outside where everyone can meet if a fire occurs.
- Practice a fire drill every 6 months, including fire drills at night. Ensure small children hear the alarm and wake when it sounds. They must wake up and it is important that they know what to do.
- Current studies have shown that smoke alarms may not awaken all sleeping individuals, and that it is the responsibility of individuals in the household that are capable of assisting others to provide assistance to those individuals.

What to do when the alarm sounds

- Alert small children in the home.
- Leave immediately using your escape plan. Every second counts so don't waste time getting dressed or picking up valuables.
- When leaving, don't open any internal doors without first feeling the surface. If it is hot or you see smoke seeping through the edges, don't open that door – use your alternative exit. If the door is cool, place your shoulder against it, open it slightly and be ready to slam it shut if heat and smoke rush in.
- Stay close to the floor if the air is smoky. Take shallow breaths through a wet cloth if possible.
- Once outside gather at your designated meeting place.
- Call the fire department from a neighbours home or mobile phone.
- Do not return to your home until the fire officials deem it safe to do so.

Function	Indication	Description
Standby status	The red LED flashes every 50 seconds	The unit is working
AC power indication	The green LED illuminates continuously	The unit is receiving AC power
Low battery warning	The unit chirps with Red LED flashing every 50 seconds	The battery is low – replace the unit with a new one
Fault warning	The unit chirps between the red LED flashing twice	The unit is faulty – see “Trouble Shooting”
End of life warning	The unit chirps between the red LED flashing twice	The unit will send an end of life warning after 10 years. Replace the unit with a new one.
Test Function	The Red LED flashes once every second with alarm sounding until the TEST button is released	<ul style="list-style-type: none">• Test by pressing the TEST button on the heat alarm for at least 5 seconds• The alarm will sound if the electronic circuitry, siren and battery are working properly• If no alarm sounds, refer to “Trouble Shooting”
Silence function	The red LED flashes every 8 seconds	<ul style="list-style-type: none">• This alarm has a built-in Silence feature.• If cooking or other non-hazardous sources cause the alarm to sound, it can be temporarily silenced by pressing the HUSH button for over 2 seconds• The alarm enters silent mode for 10 minutes• After 10 minutes, the alarm will resume normal operation
Fire alarm	The Red LED flashes every second, with alarm sounds	Generate alarm sounds when there is a fire
Fire alarm memory	The red LED flashes twice every 24 seconds	When the alarm exits the fire alarm state, it enters the fire alarm memory state, and the red LED flashes twice every 24 seconds for 72 hours
Interconnection alarm	The unit generates alarm sounds without Red LED flashing	The unit will enter the interconnection alarm mode when it receives wired or wireless interconnected alarm signals
Interconnection alarm memory	The red LED flashes once every second	When the alarm exits the interconnection alarm state, it enters the interconnection alarm memory state, and the red LED flashes once every second for 3 minutes
Do not disturb	The red LED flashes every 50 seconds	The unit will stop nuisance warnings about low battery or fault mode when the HUSH button is pressed

CAUTION:

- Before using the silence function, identify the source of the heat and make sure the situation is safe. After 10 minutes silence, the unit will resume normal operation.
- DO NOT use an open flame to test your alarm, you could damage the alarm or ignite combustible materials and this could result in a fire.
- If the alarm sounds, and it is not being tested, it means the unit detected smoke.
THE SOUND OF THE ALARM REQUIRES YOUR IMMEDIATE ATTENTION AND ACTION.
- The do not disturb function is only active at night, so that the nuisance warnings do not affect your rest.

Technical

Classification	Alarm is suitable for BS 5839-6 requirements for Grade D systems
Main Power Source	230V~50Hz
Secondary Power Source	9VDC lithium battery
AC Operating Current	<80mA
Alarm Volume	85dB(A) @3 metres
Heat Sensitivity	58°C~70°C
Hush Time	Approx 10 minutes
Interconnecting	Max. 24 alarms (wired 150m maximum) or 12 alarms if a CO alarm is included in your system. Up to 48 wireless alarms.
Battery Life	10 years (AC power down <2 months/year)
Alarm Sensitivity	0,125-0,18 dB/m
Standards	BS5446-2:2003 EN 14604:2005+AC:2008
Sound Pattern	ISO8201(BI 0,5s - pause 0,5s - BI 0,5s - pause 0,5s - BI 0,5s - pause 1,5s, with the RED LED flashing, repeat this alarm pattern)

Cleaning your alarm

YOUR ALARM SHOULD BE CLEANED AT LEAST ONCE A YEAR

- To clean your alarm, remove it from the mounting bracket.
- You can clean the interior of your alarm by using compressed air and blowing through the openings around the perimeter of the alarm.
- The outside of the alarm can be wiped with a damp cloth only.
- Do not spray with liquid or foam cleanser, as doing so may damage the device.
- After cleaning, reinstall your alarm and test your alarm by using the test button.

Using the dust cover

This alarm is supplied with a red dust cover which should be placed over the alarm when painting or decorating to keep it dust free. This should then be removed when painting or decorating is completed.

Guarantee

BG Electrical products are guaranteed against faulty materials and workmanship for a period of 10 years from date of delivery: products will be repaired or (at BG Electrical's discretion) replacements will be supplied or (at BG Electrical's discretion) a credit note will be issued. This guarantee is subject to BG Electrical's conditions of sale and in particular to the following conditions being met:

1. Notification of any defect is given to BG Electrical as soon as reasonably practicable after becoming apparent, and the products then returned to BG Electrical.
2. The products have only been operated under normal operating conditions and have only been subject to normal use.
3. No work (other than normal and proper maintenance) has been carried out to the products without BG Electrical's prior written consent.
4. The products have been assembled, or incorporated into other goods, by a qualified and recognised electrician and only in accordance with any instructions issued by BG Electrical.
5. The defect has not arisen from an item manufactured or supplied by a person other than BG Electrical. This guarantee does not affect any consumer statutory rights.

Trouble Shooting:

Problem	Cause and Remedy
The green LED does not light when AC power supplied	Check the terminals are wired correctly to the Combo Smoke & Heat Alarm Ensure the AC power is turned on
Alarm does not sound when tested (Note: Push the test button for at least 4 seconds while testing)	Ensure that the battery and the AC power are properly connected
The alarm chirps every 50 seconds with the red LED flashing once	The battery is low – replace the unit with a new one
The alarm chirps twice every 50 seconds with the red LED flashing twice (alarm goes into fault mode)	Clean the alarm. If the problem persists, replace the alarm
The alarm sounds different to normal. Sound starts and stops.	Clean the alarm. If the problem persists, replace the alarm
The alarm can't interconnect with other alarms	One or more of the alarms may have been wired incorrectly. Check all of the alarms in your system to find the alarm that has been wired incorrectly, remove and replace this alarm with a new one.
If the problem still exists, please return to your retailer. If the unit is out of warranty, please replace with another new alarm. NOTE: WEEKLY TESTING IS REQUIRED	

Batch Code Explanation



XX (year) XX (month) XX (date) X (serial number)

Address/Helpline

Luceco PLC Stafford Park 1 Telford TF3 3BD ENGLAND	(EU) Luceco SE C/ Bobinadora 1-5 08302 Mataró SPAIN
--	---

If you have further technical assistance you can get in touch with our
Technical Helpline on:
+44 (0)3300 249 279
technical.support@bgelectrical.co.uk

Environmental Protection

This symbol is known as the “Crossed-out Wheelie Bin Symbol”. When this symbol is marked on a product or battery, it means that it should not be disposed of with your general household waste. Some chemicals contained within electrical/electronic products or batteries can be harmful to health and the environment. Only dispose of electrical/electronic/battery items in separate collection schemes, which cater for the recovery and recycling of materials contained within. Your co-operation is vital to ensure the success of these schemes and for the protection of the environment.

EN 14604:2005+AC:2008
BS5446-2:2003



Regular Production Surveillance
Safety Type Approved

www.tuv.com
ID 1111294003



1008 24



VIEW MANUAL

For a more in-depth instruction manual please scan the QR code