



# Technical Data

## Nexus Grid Dimmer Modules

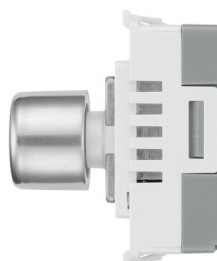
### Brief product description:

The Nexus Grid range is ideal for domestic, commercial and industrial applications, and allows you to build your own module configurations with a variety of combinations and finishes.

### Features:

- Switchable Dimmer module for choice of trailing or leading edge (set to trailing edge as default)
- Adjust the lighting level to suit the mood and save power at lower lighting levels with the ability to set your minimum dimming level
- Soft start brings the lights to a set level in around 1 second and extends the life of lamps
- Smooth dimming control with silent operation - no noise when dimming
- Overload protection prevents failure if you mistakenly connect your dimmer to too many lights or transformers, and will turn the lights down or off until the load is corrected
- Support for lower wattage lamps eliminates flicker
- 2 way push on/off with rotary control
- Supplied with dimmer knob
- Suitable for for LED, Halogen and Incandescent lamps
- Simple secure 'locate & clip' fitting to frame
- Captive backed out terminal screws for fast installation
- Module to be installed with Grid frame and plate

### Product Images



SIDE



REAR

BRITISH  
BG  
GENERAL

SWITCHABLE  
LEADING/TRAILING  
EDGE DIMMER  
220-240V-50/60Hz  
LED 5-150W R.C  
5-150W R.C  
BS EN60669-2-1

CE UK CA

L2 L1

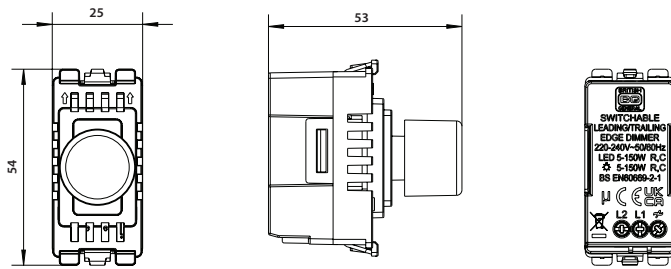


# Nexus Grid Dimmer Modules

## Technical Specifications

Standard(s)	BS EN 60669-2-1	CE
Voltage	220-240V AC	
<b>Load Rating (Max/Min per module)</b>		
Dimmable LED	Trailing: 5-150W, Leading: 5-100W	UK CA
Tungsten/Incandescent	Trailing: 5-150W, Leading: 5-100W	
Halogen	Trailing: 5-150W, Leading: 5-100W	
Type	Switchable Leading/Trailing Edge (set to Trailing Edge as default)	
Terminal Capacity	2 x 1mm <sup>2</sup> & 2 x 1.5mm <sup>2</sup>	
RoHS Directive	Yes	
WEEE Directive	Yes	
Mounting Box Depth (Min)	25mm	

## Line Diagrams



## Packaging Information

Cat No.	Description	Packaging Type			Pack Quantity			Barcode		
		Product	Inner Box	Outer Box	Each	Inner Box	Outer Box	Individual	Inner Box	Outer Box
RDLT	2-Way Dimmer - WH	Bag	Colour Box	Carton	1	10	100	5050765262187	5050765262262	5050765262347
RPCDWLT	2-Way Dimmer - EVWH	Bag	Colour Box	Carton	1	10	100	5050765262248	5050765262323	5050765262408
RPCBBDLT	2-Way Dimmer - EVBK	Bag	Colour Box	Carton	1	10	100	5050765262231	5050765262316	5050765262392
RABDLT	2-Way Dimmer - AB	Bag	Colour Box	Carton	1	10	100	5050765262255	5050765262330	5050765262415
RBSDLT	2-Way Dimmer - BS	Bag	Colour Box	Carton	1	10	100	5050765262200	5050765262286	5050765262361
RPCDLT	2-Way Dimmer - PC	Bag	Colour Box	Carton	1	10	100	5050765262224	5050765262309	5050765262385
RBNDLT	2-Way Dimmer - BN	Bag	Colour Box	Carton	1	10	100	5050765262194	5050765262279	5050765262354
RFBDLT	2-Way Dimmer - FB	Bag	Colour Box	Carton	1	10	100	5050765262217	5050765262293	5050765262378

Colour Reference:

WH = White, EVWH = Evolve White, EVBK = Evolve Black, AB = Antique Brass, BS = Brushed Steel, PC = Polished Chrome, BN = Black Nickel, FB = Matt Black

## Weights & Dimensions

Cat No.	Description	Dimensions (H x W x D) cm			Weight (kg)			CBM (m <sup>3</sup> )
		Product	Inner Box	Outer Box	Each	Inner Box	Outer Box	Outer Box
RDLT/RPCD*DLT	2-Way Dimmer (White/Evolve)	5.4 x 2.5 x 5.3	6.2 x 12.2 x 13.7	15.6 x 25.8 x 32	0.042	0.46	4.80	0.013201
R**DLT	2-Way Dimmer (Metal)	5.4 x 2.5 x 5.3	6.2 x 12.2 x 13.7	15.6 x 25.8 x 32	0.047	0.51	5.30	0.013201