

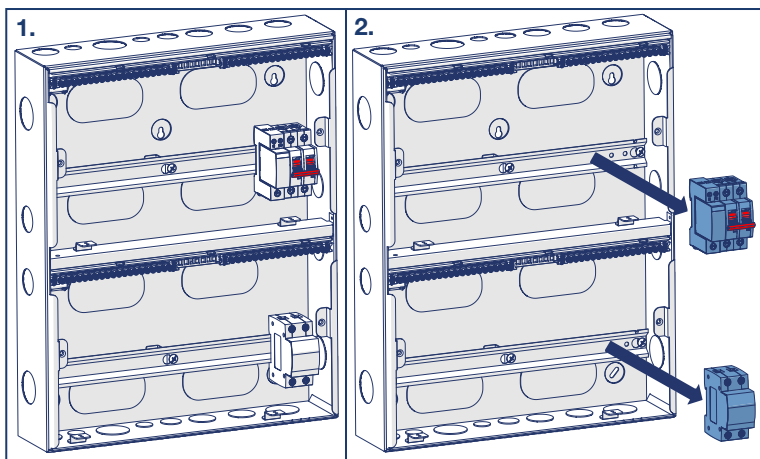
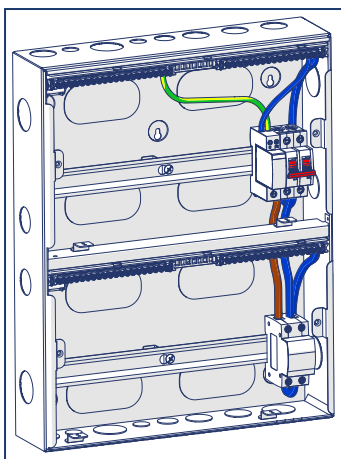


Safety Warning

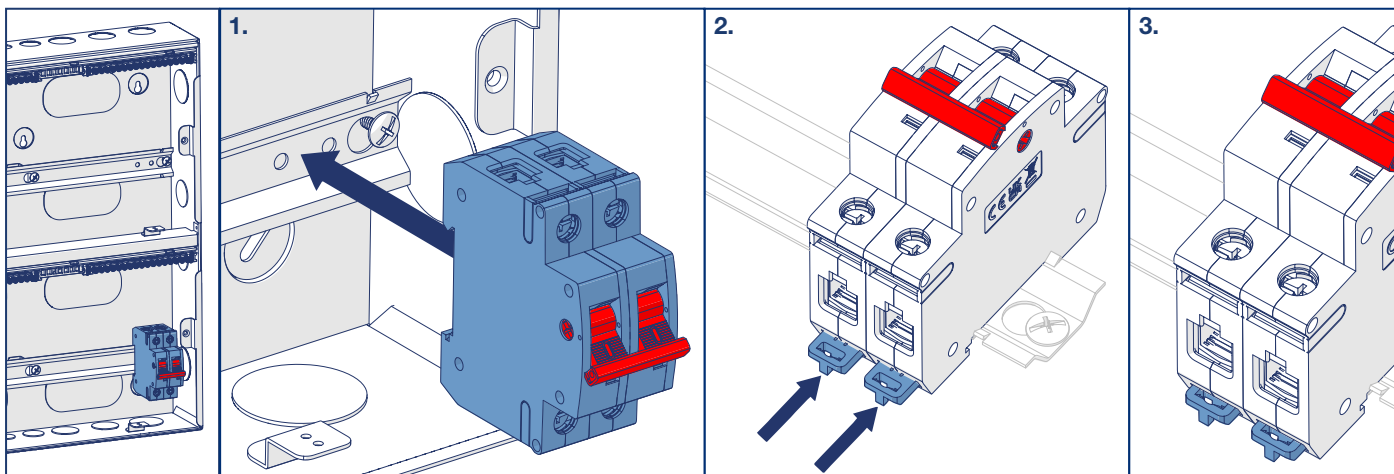
This unit must be installed by a qualified registered electrician in accordance with the current IET wiring regulations BS7671. Before commencing any electrical work ensure the electrical supply is isolated and locked off.

- Please ensure all components, (cable, protective devices, and Earth bonding etc) are checked prior to full testing and power-up. Any other regulations applicable to the equipment being installed such as the Machinery directive and current health and safety legislation must also be adhered to.
- User/Installation instruction leaflet **MUST** be made available to the responsible user for this product.
- Ensure **ALL** screws and connections are fully tightened before use using an appropriate torque Screwdriver this includes pre-fitted factory-made connections which may have loosened during the transport or during installation.
- All connections should also be inspected periodically to ensure correct tightness.
- **DO NOT USE POWER TOOL SCREWDRIVERS ON ELECTRICAL CONNECTIONS.**
- **If in doubt consult a competent electrician.**

Existing Device Arrangement & Wiring

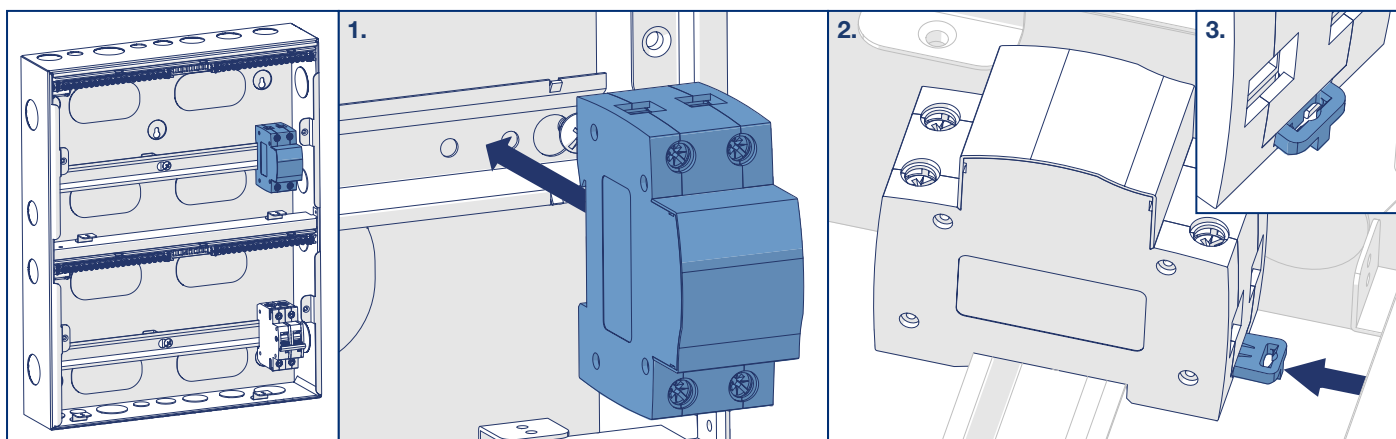


Re-Install Main Switch onto Bottom Din Rail

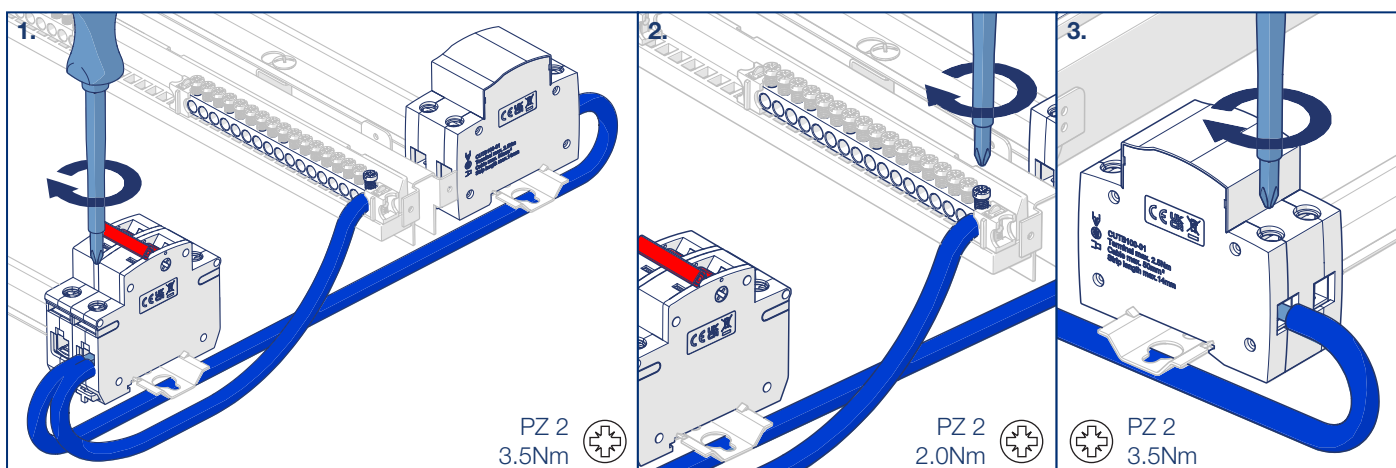


Main Switch Relocator Kit

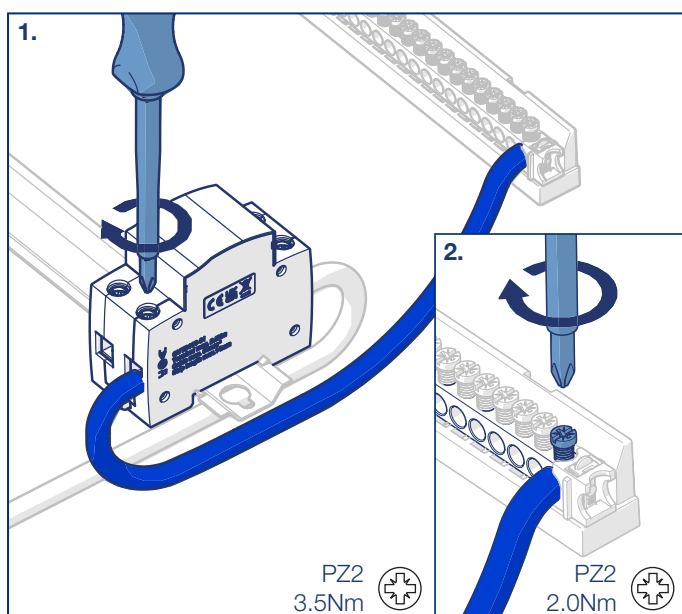
Re-Install Connector Block onto Top Din Rail



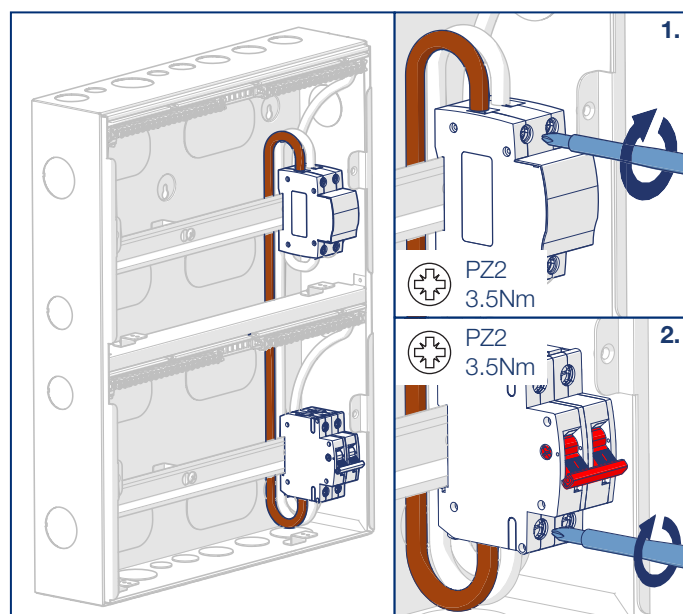
Install Neutral Wiring Loom



Install Neutral Link from Connector Block to Terminal Bar

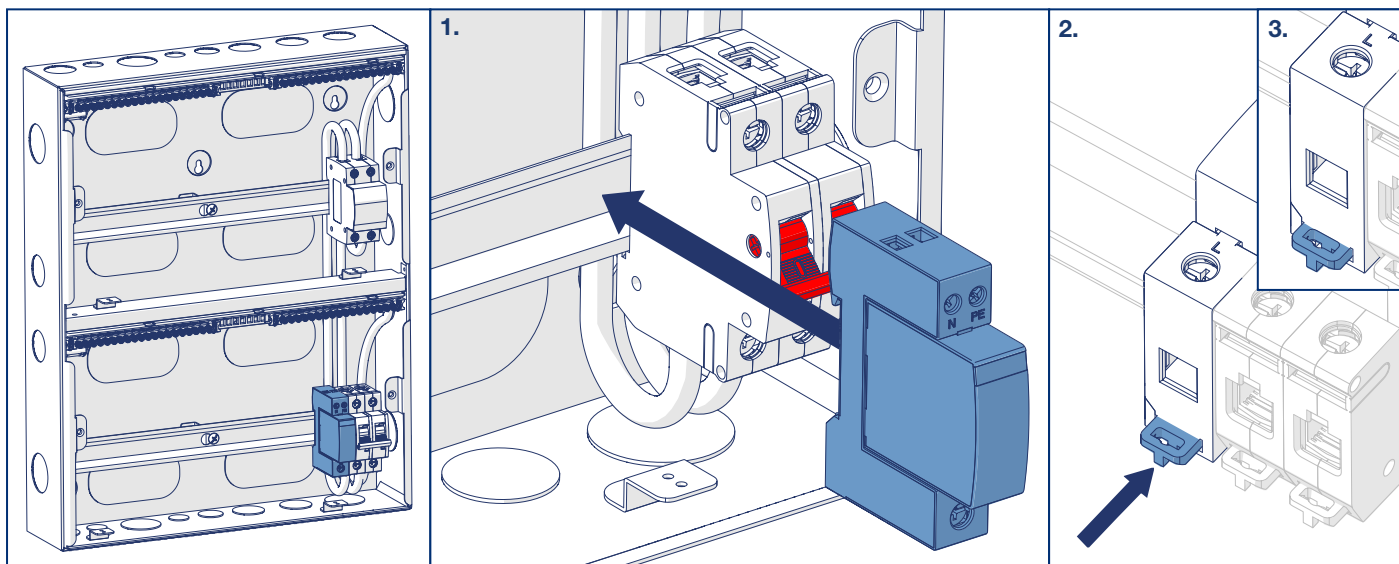


Install Live Link from Connector Block to Main Switch

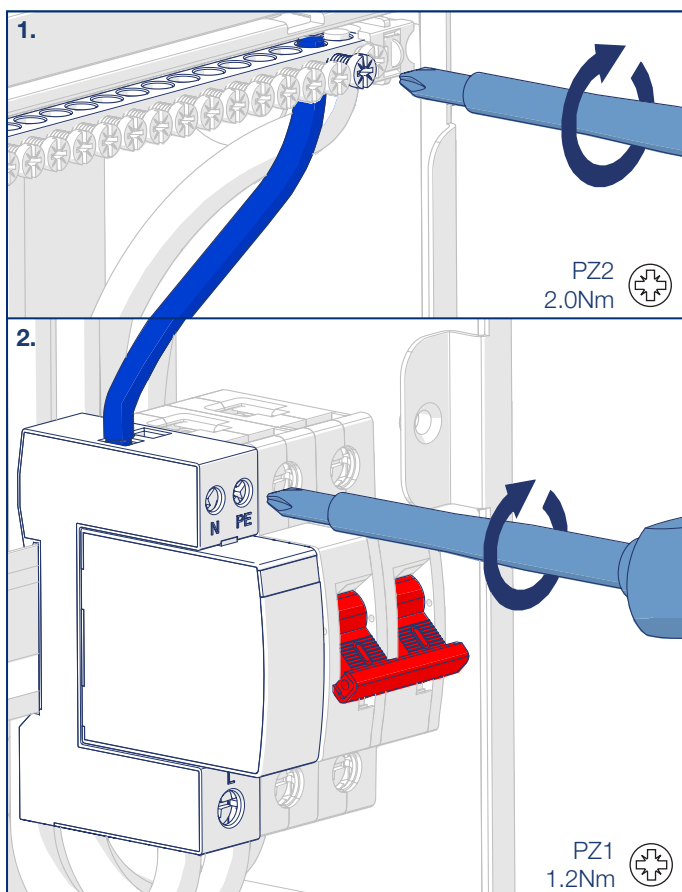


Note: Neutral link not supplied as part of the relocater kit. Use neutral wire link from existing wiring.

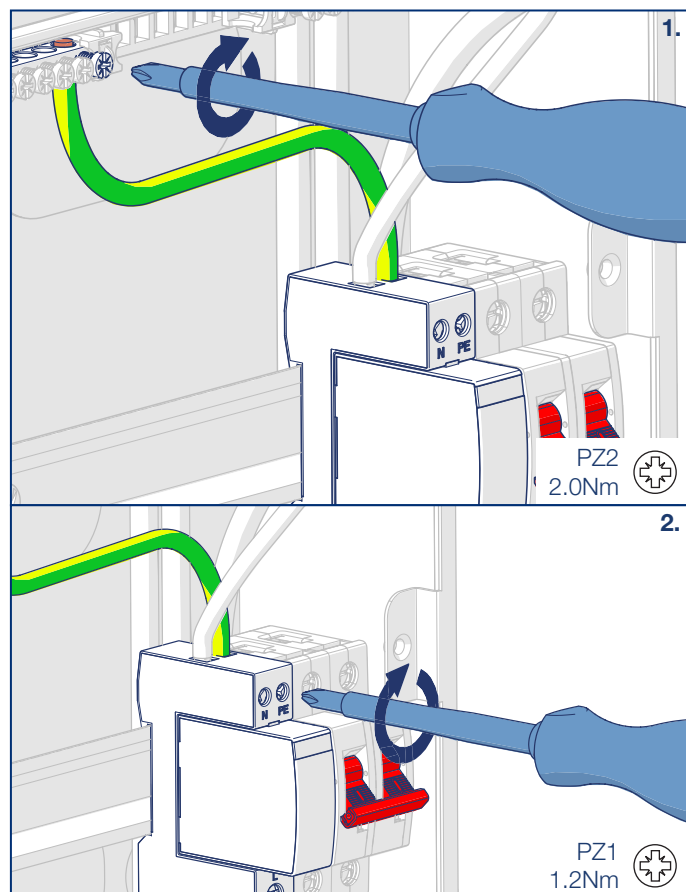
Install SPD onto Bottom Din Rail



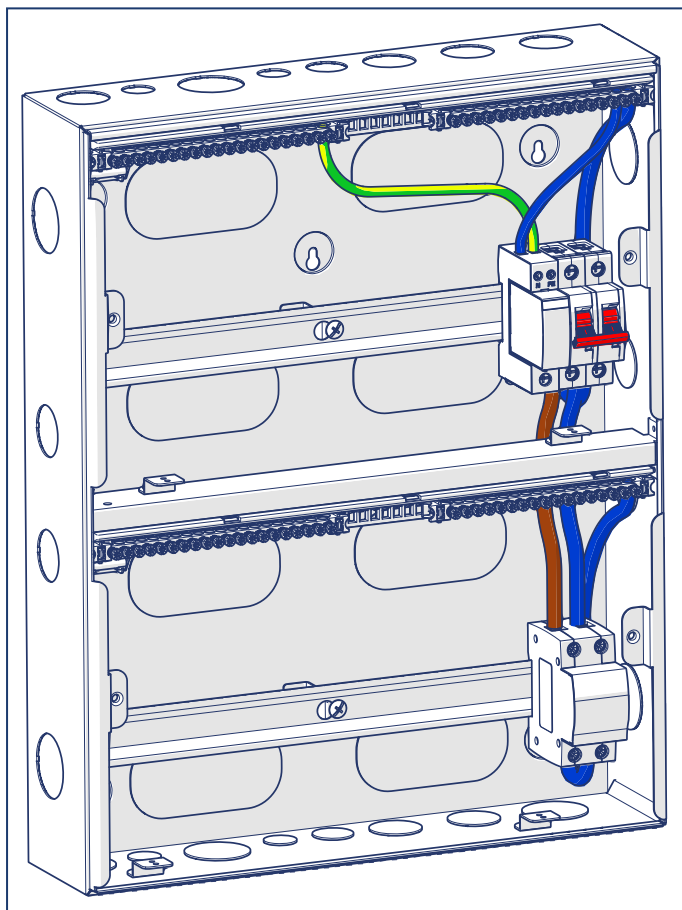
Install Neutral Link from SPD to Terminal Bar



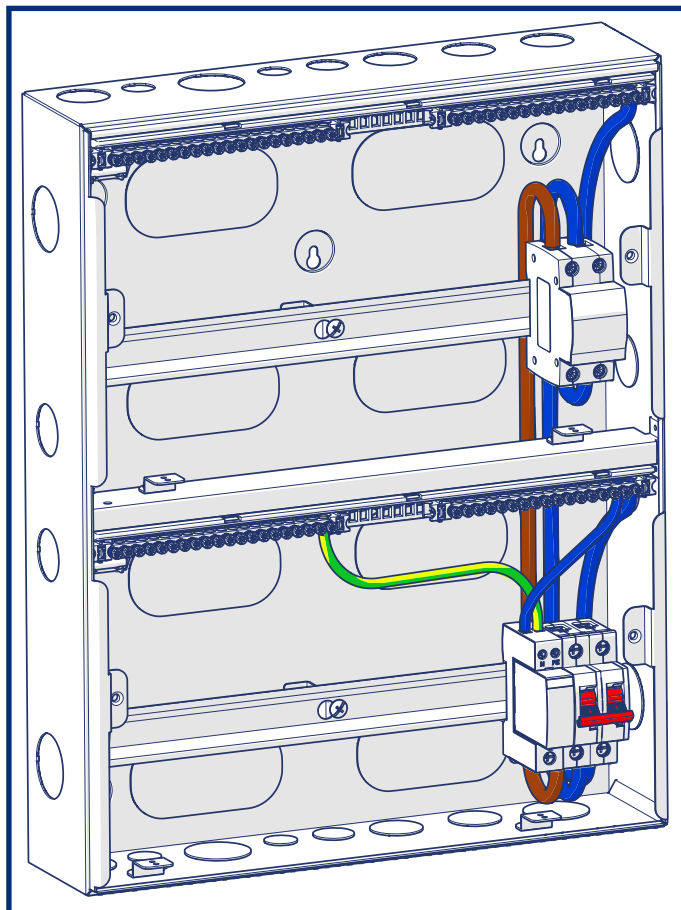
Install Earth Link from SPD to Terminal Bar



Existing Device Arrangement & Wiring



Relocated Device Arrangement & Wiring



Terminal Torque Settings

Connection	PZ No.	Slotted Screwdriver Size	Torque Setting >1.5mm ² (Nm)	Torque Setting ≤1.5mm ² (Nm)	Strip Length
Terminal Bars	PZ2	6.5mm	2.0	1.3	14mm
Main Switch	PZ2	9mm	3.5	2.3	14mm
SPD	PZ2 L/-- PZ1 PE/N	6mm	2.0 L/-- 1.2 PE/N	1.3	14mm
Connector Block	PZ2	6mm	3.5	2.3	14mm

Guarantee

These products are covered by an 10 year warranty from date of installation, subject to the terms and conditions of sale. For more details, refer to www.bgelectrical.uk.

Batch Code Explanation

yyWxx: Manufacturing date code;
year of manufacturing (yy)
and week of manufacturing (Wxx)

Contact Information

Luceco PLC
Stafford Park 1
Telford TF3 3BD
ENGLAND

(EU) Luceco SE
C/ Bobinadora 1-5
08302 Mataró
SPAIN

If you require further technical assistance:
Technical Helpline: +44 (0)3300 249 279
technical.support@bgelectrical.co.uk

