

TEMPUS CONNECT IP65 BULKHEAD

EMERGENCY LIGHTING
LEMBKWLPW



SPECIFICATIONS:

- **Input Voltage:** AC220-240V 50/60Hz
- **Emergency Duration:** >3 Hours
- **Recharge Time:** 24 Hours
- **Operating Environmental Temperature:** 5°C to 40°C
- **Battery:** LiFePO₄ 3.2V 1500mAh

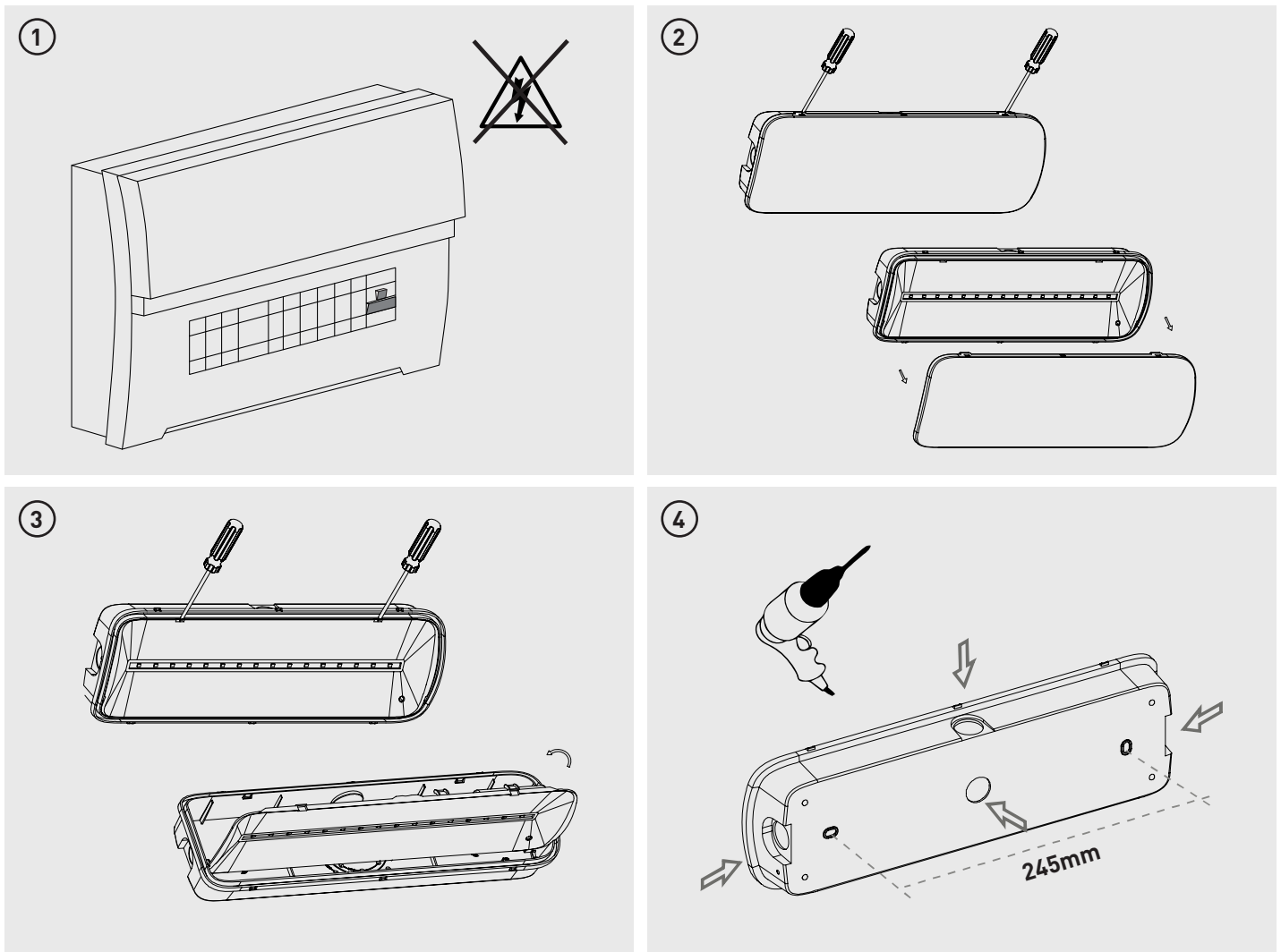


ENSURE ELECTRICAL SUPPLY IS DISCONNECTED / ISOLATED BEFORE COMMENCING INSTALLATION

NOTE - To comply with regulations, installation must be carried out by qualified electrician and in accordance with the current IEE Wiring Regulations (BS7671) and Building Regulations

OPERATION

The luminaire should be connected to the mains supply for a minimum of 24 hours before operating in emergency mode as the batteries need to be fully charged before they will provide their full rated duration.



Tech Help Line

UK - 0330 0249 279

Non UK - +44 (0)1952 238 100

Supplied by

Luceco plc, Telford, TF3 3BD, UK.

Visit our website at www.luceco.com

Servicio de asistencia telefónica

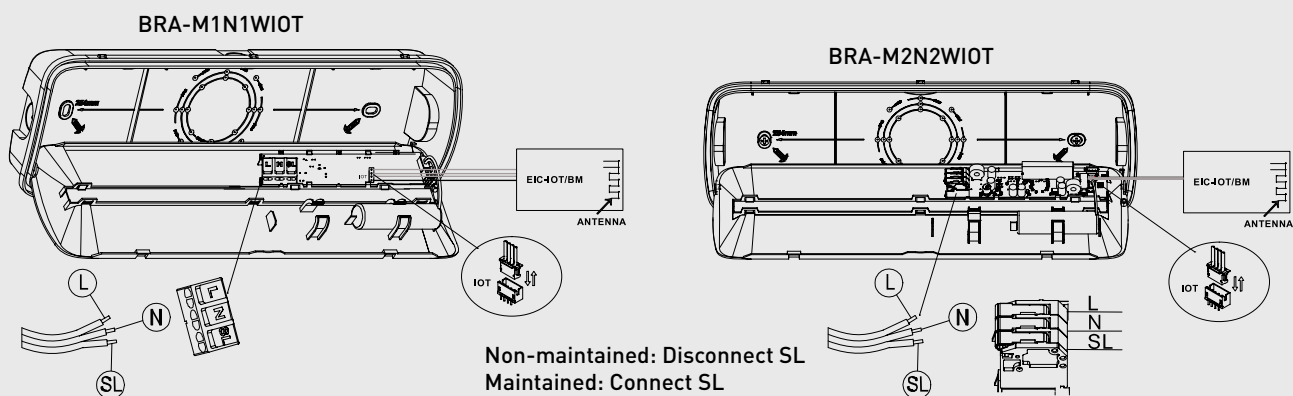
UK - 0330 0249 279

Non UK - +34 93 829 55 74

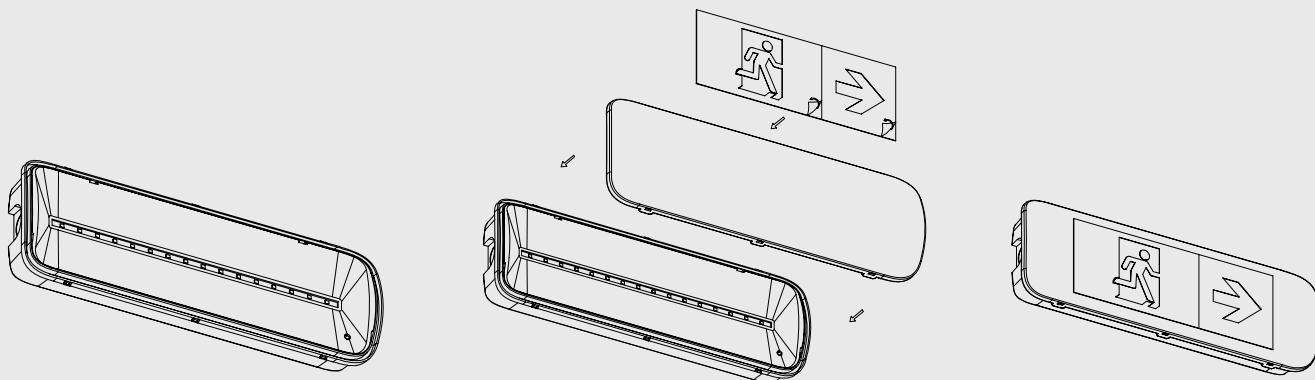
Luceco SE, Barcelona, 08460, ES.

Visite nuestra web en www.luceco.com

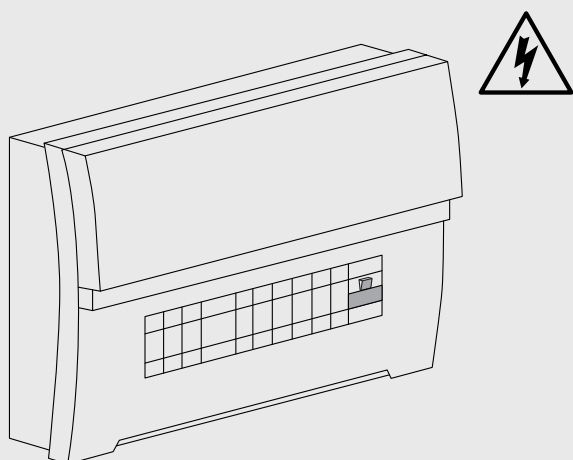
5



6



7



Tech Help Line
 UK - **0330 0249 279**
 Non UK - **+44 (0)1952 238 100**
 Supplied by
Luceco plc, Telford, TF3 3BD, UK.
 Visit our website at www.luceco.com

Servicio de asistencia telefónica
 UK - **0330 0249 279**
 Non UK - **+34 93 829 55 74**
Luceco SE, Barcelona, 08460, ES.
 Visite nuestra web en www.luceco.com

TEMPUS CONNECT IP65 BULKHEAD

EMERGENCY LIGHTING
LEMBKWLPW

RECOMMENDED ROUTINE PROCEDURE

The following test is designed to ensure the continued protection of your premises and occupants. Because of the possibility of a failure of the normal lighting supply occurring shortly after a period of testing, all tests should, whenever possible, be undertaken at times of least risk, e.g. during daylight hours.

ONCE A DAY

Visual inspection of battery charge LED.

ONCE A MONTH

Each unit should be energized from its battery for about 30 seconds by simulation of a failure of the normal lighting supply to ensure the lamp operates in the emergency condition.

ONCE A YEAR

Each unit should be energized from its battery for a 3 hour discharge test.

ROUTINE TEST RECORD

| Month | Test | First Year | | Second Year | | Third Year | | Fourth Year | | Fifth Year | |
|-------|----------|------------|------|-------------|------|------------|------|-------------|------|------------|------|
| | | Signed | Date | Signed | Date | Signed | Date | Signed | Date | Signed | Date |
| 1 | Function | | | | | | | | | | |
| 2 | Function | | | | | | | | | | |
| 3 | Function | | | | | | | | | | |
| 4 | Function | | | | | | | | | | |
| 5 | Function | | | | | | | | | | |
| 6 | Function | | | | | | | | | | |
| 7 | Function | | | | | | | | | | |
| 8 | Function | | | | | | | | | | |
| 9 | Function | | | | | | | | | | |
| 10 | Function | | | | | | | | | | |
| 11 | Function | | | | | | | | | | |
| 12 | Function | | | | | | | | | | |