

TEMPUS CONNECT
RECESSED PINSPOT
 EMERGENCY LIGHTING
 LEMEDWXL PW



SPECIFICATIONS:

- **Input Voltage:** AC220-240V 50/60Hz
- **Emergency Duration:** >3 Hours
- **Recharge Time:** 24 Hours
- **Operating Environmental Temperature:** 5°C to 40°C
- **Battery:** LiFePO₄ 3.2V 3000mAh

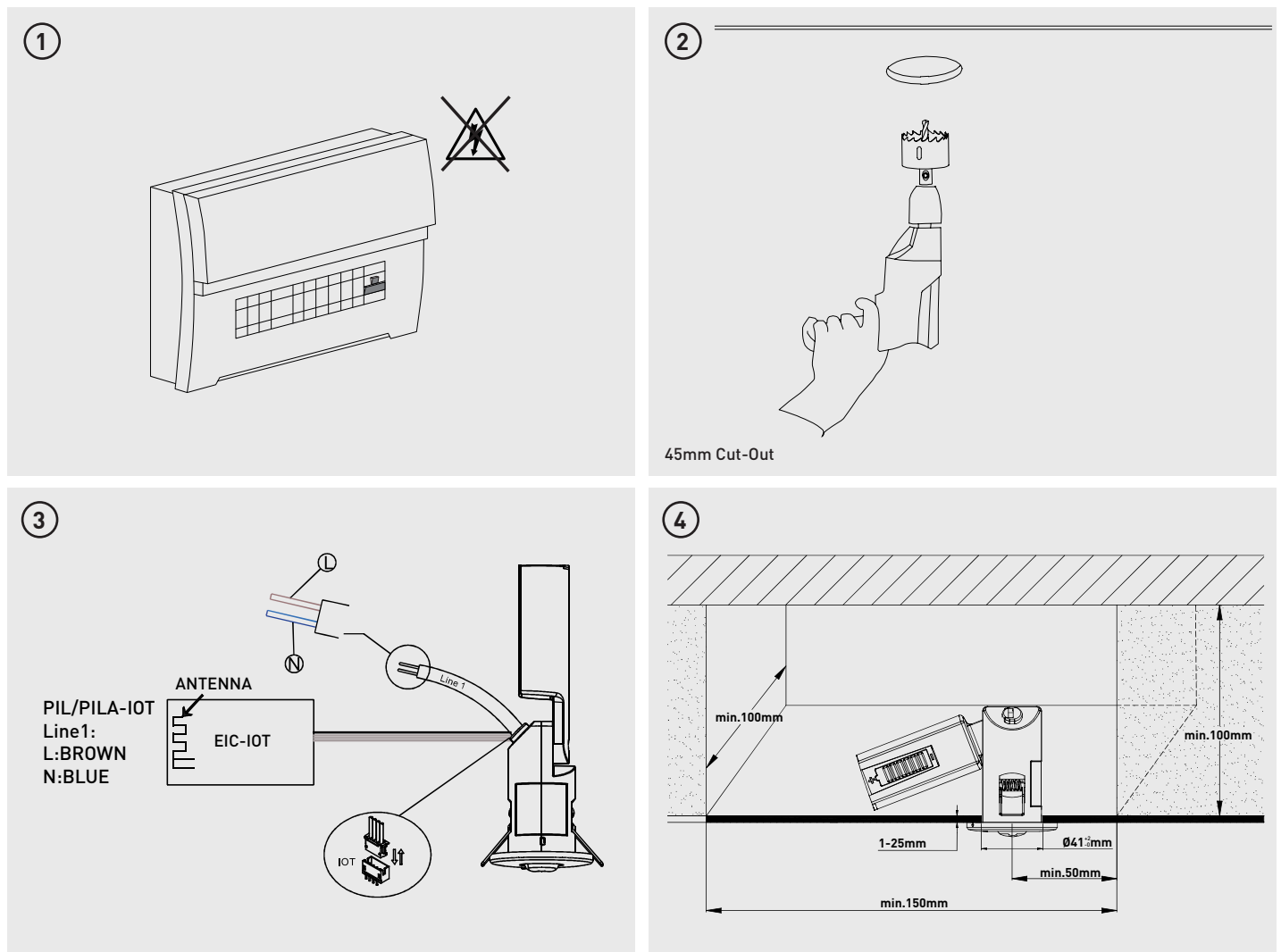


ENSURE ELECTRICAL SUPPLY IS DISCONNECTED / ISOLATED BEFORE COMMENCING INSTALLATION

NOTE - To comply with regulations, installation must be carried out by qualified electrician and in accordance with the current IEE Wiring Regulations (BS7671) and Building Regulations

OPERATION

The luminaire should be connected to the mains supply for a minimum of 24 hours before operating in emergency mode as the batteries need to be fully charged before they will provide their full rated duration.



Tech Help Line
 UK - 0330 0249 279
 Non UK - +44 (0)1952 238 100
 Supplied by
Luceco plc, Telford, TF3 3BD, UK.
 Visit our website at www.luceco.com

Servicio de asistencia telefónica
 UK - 0330 0249 279
 Non UK - +34 93 829 55 74
Luceco SE, Barcelona, 08460, ES.

Visite nuestra web en www.luceco.com

5 Switching function mode

Step 1: Switch the product emergency power through the dial switch shown by the arrow.

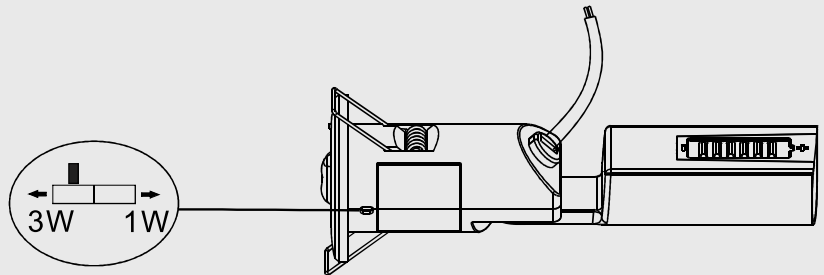
Step 2: Left: 3/4W.

Step 3: Right: 1/2W.

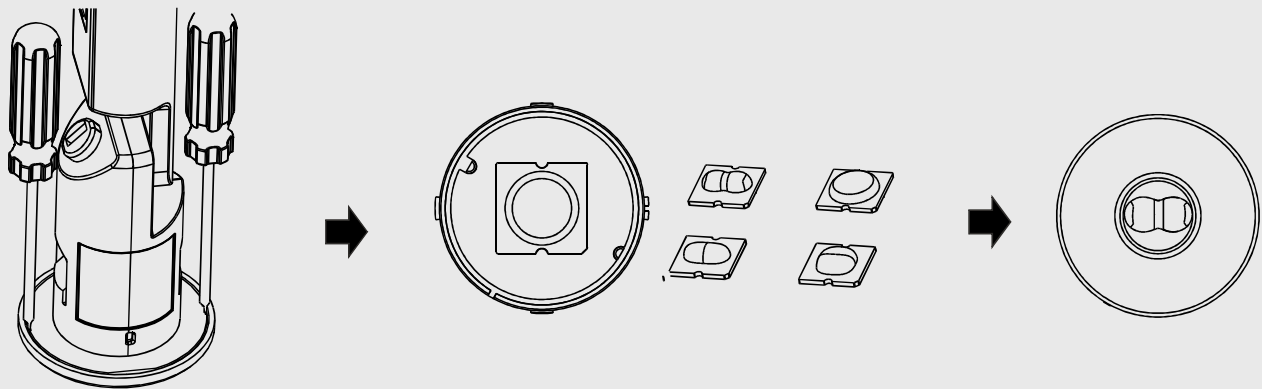
Note:

1. Please noted that functions switching by dial switch would only be available when all the wiring is disconnected, including the AC input, DC output and the battery.

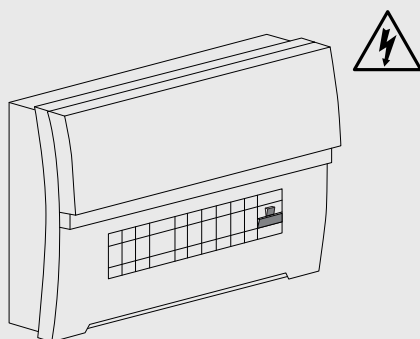
2. Please note that when using the emergency power switching function, the corresponding battery needs to be replaced, otherwise the emergency time may not be reached.



6



7



Tech Help Line

UK - 0330 0249 279

Non UK - +44 (0)1952 238 100

Supplied by

Luceco plc, Telford, TF3 3BD, UK.

Visit our website at www.luceco.com

Servicio de asistencia telefónica

UK - 0330 0249 279

Non UK - +34 93 829 55 74

Luceco SE, Barcelona, 08460, ES.

Visite nuestra web en www.luceco.com

TEMPUS CONNECT RECESSED PINSPOT

EMERGENCY LIGHTING
LEMEDWXL PW

RECOMMENDED ROUTINE PROCEDURE

The following test is designed to ensure the continued protection of your premises and occupants. Because of the possibility of a failure of the normal lighting supply occurring shortly after a period of testing, all tests should, whenever possible, be undertaken at times of least risk, e.g. during daylight hours.

ONCE A DAY

Visual inspection of battery charge LED.

ONCE A MONTH

Each unit should be energized from its battery for about 30 seconds by simulation of a failure of the normal lighting supply to ensure the lamp operates in the emergency condition.

ONCE A YEAR

Each unit should be energized from its battery for a 3 hour discharge test.

ROUTINE TEST RECORD

Month	Test	First Year		Second Year		Third Year		Fourth Year		Fifth Year	
		Signed	Date	Signed	Date	Signed	Date	Signed	Date	Signed	Date
1	Function										
2	Function										
3	Function										
4	Function										
5	Function										
6	Function										
7	Function										
8	Function										
9	Function										
10	Function										
11	Function										
12	Function										