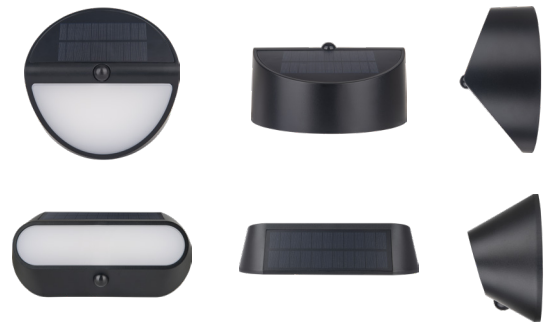


SOLAR DECORATIVE CARINA BULKHEAD WITH PIR MOTION SENSOR

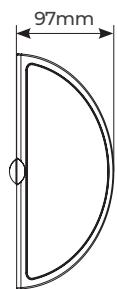
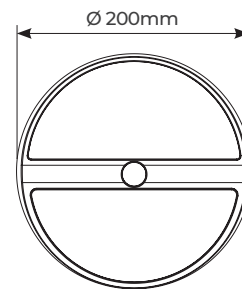
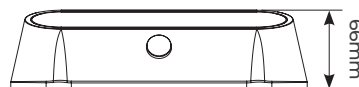
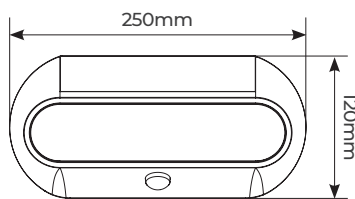
Product Features

- Ideal for paths, fences and low-level lighting
- Decorative unobtrusive design with a big light output
- No wiring, simple fit and forget solution for difficult to light areas
- High quality monocrystalline solar panel
- 3 lighting modes including dusk-till-dawn output
- PIR motion sensor to extend battery life



CAT NO.	LUMINAIRE LUMENS	WATTAGE	BATTERY CAPACITY	SHAPE
LEXSBH47B40	470	5W	Li-ion 3.7V 2200mAh	Oval
LEXSBH50B40	470	5W	Li-ion 3.7V 2200mAh	Eyelid

Product Drawing



STANDARD	DESCRIPTION
EN 60598-1	Luminaires – General requirements
EN 60598-2-1	Luminaires – Fixed general purpose
EN 61000-3-2	Electromagnetic compatibility (EMC) – Part 3-2: Limits – for harmonic current emissions
EN 61000-3-3	Limits – Limitation of voltage changes, voltage fluctuations and flicker in public low-voltage supply systems, for equipment with rated current ≤ 16 A per phase and not subject to conditional connection
EN 61547	Equipment for general lighting purposes – EMC immunity requirements
EN 55015	Limits and methods of measurement of radio disturbance characteristics of electrical lighting and similar equipment

