



round glow push light



# HOME

## POWER

A range of home power solutions to complement day-to-day activities

### FEATURES

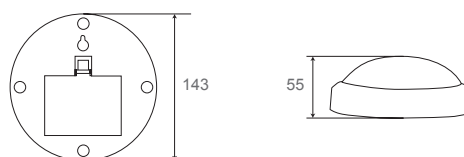
- Battery powered background light
- Easy to install, using fixing hole on the back
- Requires 2 x AA batteries (not included)
- Fitted with an LED bulb, for low energy consumption and longer battery life
- Ideal for use in a loft, shed, under stairs, in a wardrobe, caravan or garage

### PRODUCT IMAGES



RPL1

### LINE DRAWING



### PRODUCT INFORMATION

Part Number	RPL1
Product Dimensions	Height 143mm x Width 143mm x Depth 55mm

### TECHNICAL SPECIFICATIONS

Standard(s)	This product is certified to applicable British safety standards BS1363, BS EN 60598, BS 5733
Maximum Load (Wattage)	
IF IN DOUBT CONSULT A QUALIFIED ELECTRICIAN	



### SAFETY WARNING

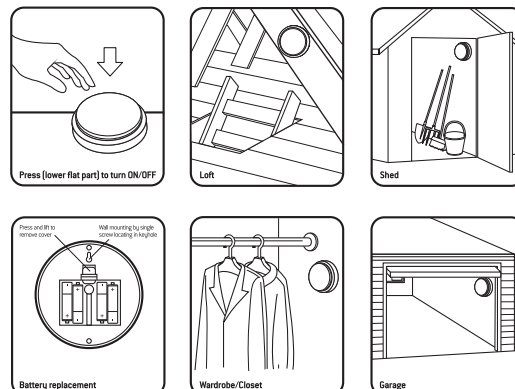
PLEASE READ CAREFULLY AND USE IN ACCORDANCE WITH OUR SAFETY INSTRUCTIONS BELOW

To clean wipe with soft clean damp cloth.  
Do not use any abrasive cleaners.  
Dispose of batteries safely at designated collection points.  
Exhausted batteries should be removed immediately.  
Keep batteries out of reach from babies and small children.

FOR INDOOR USE ONLY

### OPERATING INSTRUCTIONS

- Each light requires 4 x AA (1.5V) batteries (included).
- The light can be mounted using the key hole fixing on the rear.
- Ideal for loft's, sheds, garage, cupboards and wardrobes.
- To fit or change batteries, open cover and arrange correctly as show in the Battery Replacement diagram.
- To fit and replace batteries - see diagram opposite.



Masterplug Help Line

03300 249 279

Supplied by

**Luceco PLC**

Stafford Park 1 Telford TF3 3BD ENGLAND

Visit our website at

[www.masterplug.com](http://www.masterplug.com)