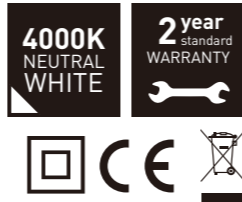


RETROFIT LED 2D LAMP

**IMPORTANT:** Before connecting lamp, check below installation guide to confirm installing the correct equivalent lamp for existing fitting.



DO NOT INSTALL BEFORE CONFIRMING THE CORRECT LAMP AS THIS CAN CAUSE PREMATURE LAMP FAILURE.

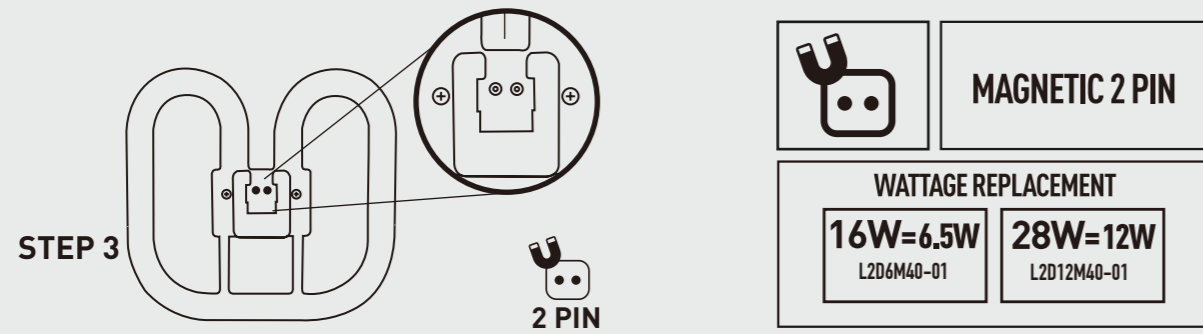
STEP 1:



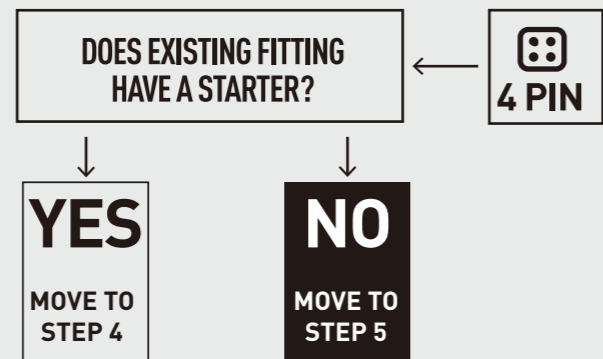
STEP 2:

Replace with 2 pin magnetic version from the table below. (Choose correct wattage equivalent).

OLD REPLACEMENT LAMP	MAGNETIC 2 PIN LAMP OLD WATTAGE EQUIVALENT	LUCECO WATTAGE VERSION	LUCECO CODE
Magnetic Ballast 2 Pin Lamp	16W	6.5W	L2D6M40-01
Magnetic Ballast 2 Pin Lamp	28W	12W	L2D12M40-01



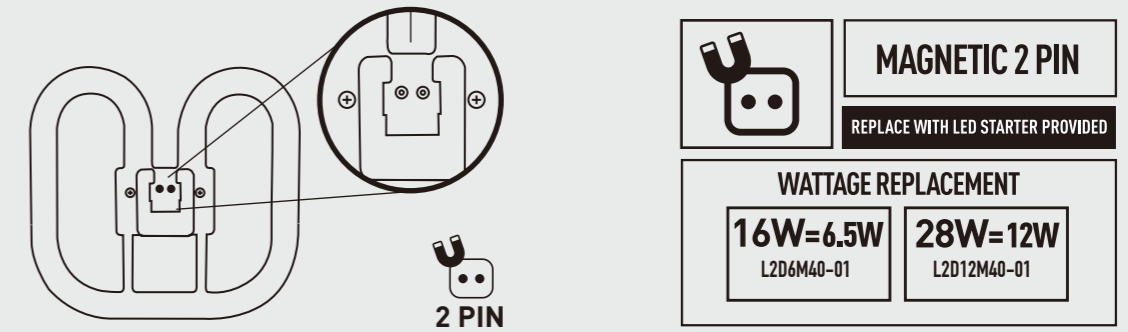
STEP 3



STEP 4

If your fitting has a starter, you require a 2 pin magnetic lamp. Replace the LED starter and then fit lamp from below table. (Choose correct wattage equivalent).

OLD REPLACEMENT LAMP	MAGNETIC 2 PIN LAMP OLD WATTAGE EQUIVALENT	LUCECO WATTAGE VERSION	LUCECO CODE
Magnetic Ballast 2 Pin Lamp	16W	6.5W	L2D6M40-01
Magnetic Ballast 2 Pin Lamp	28W	12W	L2D12M40-01



STEP 5

If your fitting has NO starter, you require a 4 pin Electronic lamp from the below table. (Choose correct wattage equivalent).

OLD REPLACEMENT LAMP	ELECTRONIC 4 PIN LAMP OLD WATTAGE EQUIVALENT	LUCECO WATTAGE VERSION	LUCECO CODE
Electronic Ballast 4 Pin Lamp	16W	6.5W	L2D6E40-01
Electronic Ballast 4 Pin Lamp	28W	12W	L2D12E40-01
Electronic Ballast 4 Pin Lamp	38W	18W	L2D18E40-01

