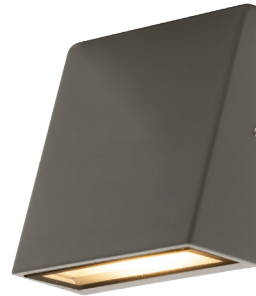


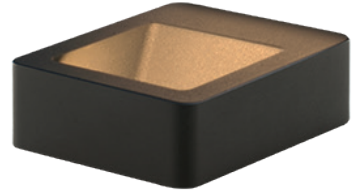
SLATE GREY WALL LIGHTS

Product Features

- Decorative wall lights with integrated LED
- Die-cast aluminium housing with slate grey finish
- Suitable for exterior or interior living applications



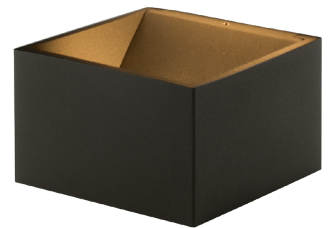
LEXD3WDG3



LEXD5SUDG3



LEXD8FUDG3



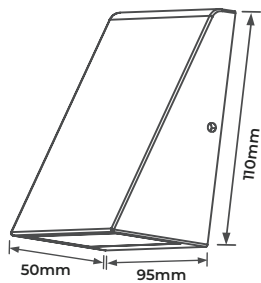
LEXD9SUDG3



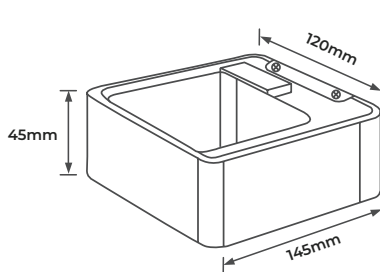
CAT NO.	TYPE	LUMINAIRE LUMENS	WATTAGE
LEXD3WDG3	Wedge	120	3W
LEXD5SUDG3	Square	150	5.6W
LEXD8FUDG3	Low Profile	520	10W
LEXD9SUDG3	Cube	306	9W

Product Drawing

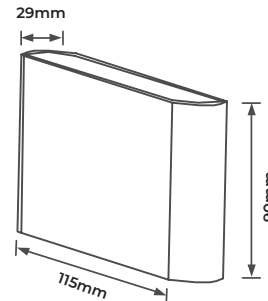
LEXD3WDG3



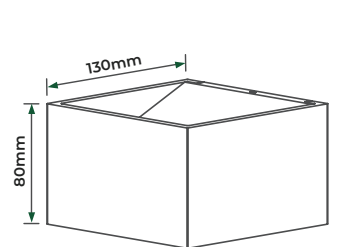
LEXD5SUDG3



LEXD8FUDG3



LEXD9SUDG3



CAT NO.	WEIGHT (kg)	EFFICACY (Llm/cW)	CRI	FREQUENCY (Hz)	IK RATING	TEMP RANGE (°C)	AMBIENT TEMP RATED LIFE (°C)	L/B RATED LIFE
LEXD3WDG3	0.33	40	>80	50-60	IK06	0 to +25	25	L70/B50
LEXD5SUDG3	0.65	27	>80	50-60	IK06	0 to +25	25	L70/B50
LEXD8FUDG3	0.415	52	>80	50-60	IK06	0 to +25	25	L70/B50
LEXD9SUDG3	0.88	34	>80	50-60	IK06	0 to +25	25	L70/B50

STANDARD	DESCRIPTION
EN 60598-1	Luminaires – General requirements
EN 60598-2-1	Luminaires – Fixed general purpose
EN 61000-3-2	Electromagnetic compatibility (EMC) – Part 3-2: Limits - for harmonic current emissions
EN 61000-3-3	Limits - Limitation of voltage changes, voltage fluctuations and flicker in public low-voltage supply systems, for equipment with rated current ≤ 16 A per phase and not subject to conditional connection
EN 61547	Equipment for general lighting purposes – EMC immunity requirements
EN 55015	Limits and methods of measurement of radio disturbance characteristics of electrical lighting and similar equipment

LUCECO

This luminaire contains built-in LED lamps.

A++
A+
A
B
C
D
E

} LED

The lamps cannot be changed in the luminaire.

874/2012

