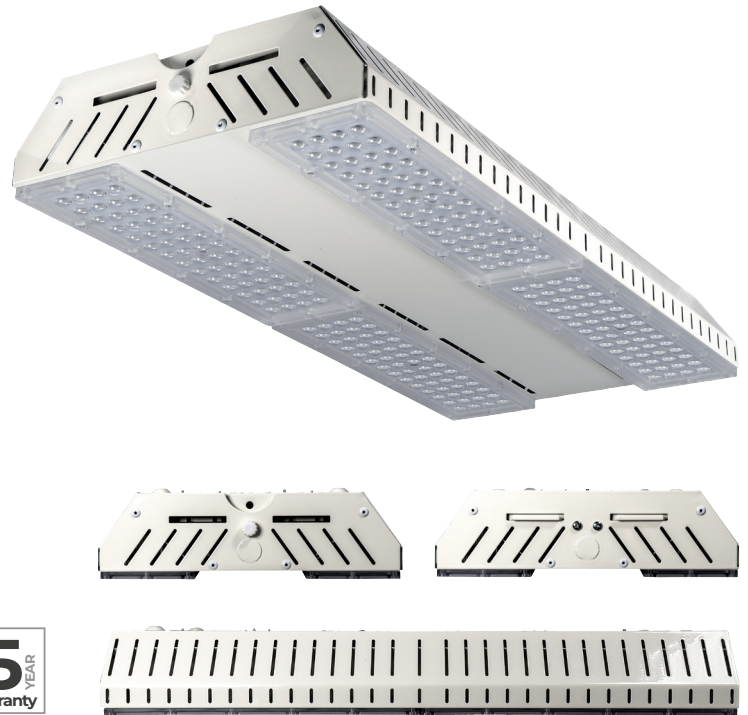


## ELARA BAY

### Product Features

- LED lowbay with fastfix geartray and option of open area (90 degrees) or racking lens (30 degrees)
- Optimised lumen outputs to replace 250W and 400W discharge lamps offering up to 143 lIm/cW
- IK10 high impact resistant steel body and polycarbonate lenses suitable for surface, trunking or suspended mount installation
- **Dimmable and PIR sensor options** available with recommended maximum heights of 12 metres

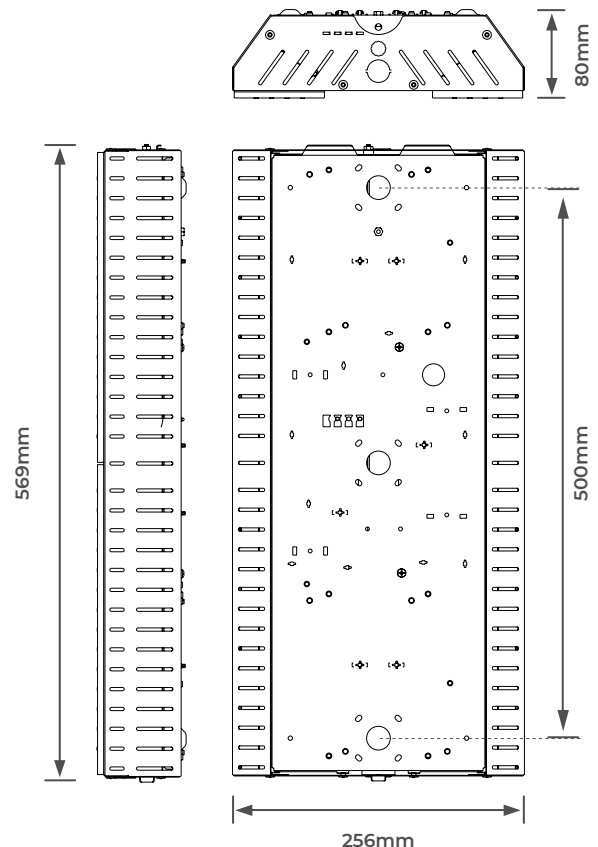


CAT NO.	DRIVER	LUMINAIRE LUMENS	WATTAGE
<b>OPEN AREA OPTIC</b>			
ELB16WS40	Fixed Output	16000	112W
ELB16WE40	Fixed Output + Emergency	16000	112W
ELB21WS40	Fixed Output	21000	155W
ELB21WE40	Fixed Output + Emergency	21000	155W
ELB30WS40	Fixed Output	30000	240W
ELB30WE40	Fixed Output + Emergency	30000	240W

<b>RACKING LENS OPTIC</b>			
ELB16RS40	Fixed Output	16000	112W
ELB16RE40	Fixed Output + Emergency	16000	112W
ELB21RS40	Fixed Output	21000	155W
ELB21RE40	Fixed Output + Emergency	21000	155W
ELB30RS40	Fixed Output	30000	240W
ELB30RE40	Fixed Output + Emergency	30000	240W

PRODUCT OPTIONS	
Digital Dimmable	Insert <b>D</b> , e.g ELB16WD40
Emergency Digital Dimmable	Insert <b>ED</b> , e.g ELB16WED40
Batten Mount PIR Sensor	Insert <b>PIR</b> , e.g ELB16WS40PIR
Central PIR Sensor	Insert <b>P</b> , e.g ELBPI6WS40
PIR Sensor with Daylight Dimming	Insert <b>P</b> and <b>D</b> , e.g ELBPI6WD40
Luceco Platform Wireless	Insert <b>LPW</b> , e.g ELB16LPW40
Luceco Elevate Wireless	Insert <b>ELPW</b> , e.g ELB16ELPW40
Emergency Self-Test	Insert <b>EST</b> , e.g ELB16WEST40
DALI Emergency Addressable	Insert <b>D</b> and <b>ED</b> , e.g ELB16WDED40

### Product Drawing

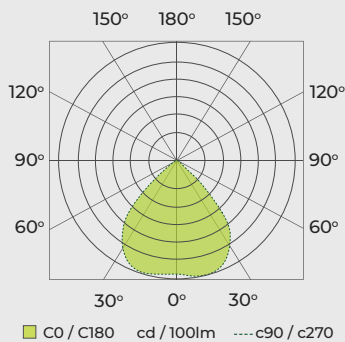


CAT NO.	WEIGHT (kg)	EFFICACY (Lm/W)	CRI	FREQUENCY (Hz)	UGR	IK RATING	TEMP RANGE (°C)	AMBIENT TEMP RATED LIFE (°C)	L/B RATED LIFE	FIXING CENTRES
ELB16WS40	2.95	143	>80	50-60	<21	IK10	-20 - +25	25	L70 / B50	500x130mm
ELB16WE40	3.45	143	>80	50-60	<21	IK10	0 - +25	25	L70 / B50	500x130mm
ELB21WS40	2.95	135	>80	50-60	<22	IK10	-20 - +25	25	L70 / B50	500x130mm
ELB21WE40	3.45	135	>80	50-60	<22	IK10	0 - +25	25	L70 / B50	500x130mm
ELB30WS40	3.45	125	>80	50-60	<23	IK10	-20 - +25	25	L70 / B50	500x130mm
ELB30WE40	3.45	125	>80	50-60	<23	IK10	0 - +25	25	L70 / B50	500x130mm
ELB16RS40	2.95	143	>80	50-60	<23	IK10	-20 - +25	25	L70 / B50	500x130mm
ELB16RE40	3.45	143	>80	50-60	<23	IK10	0 - +25	25	L70 / B50	500x130mm
ELB21RS40	2.95	135	>80	50-60	<24	IK10	-20 - +25	25	L70 / B50	500x130mm
ELB21RE40	3.45	135	>80	50-60	<24	IK10	0 - +25	25	L70 / B50	500x130mm
ELB30RS40	3.45	125	>80	50-60	<25	IK10	-20 - +25	25	L70 / B50	500x130mm
ELB30RE40	3.45	125	>80	50-60	<25	IK10	0 - +25	25	L70 / B50	500x130mm

### ELB16WS40 Luminaire Performance

Luminaire Efficiency: **100%**  
 Luminaire Efficacy: **143lm/W**  
 Classification: **A60 ±98.9% ±1.1%**  
 CIE Flux Codes: **81 98 99 99 100**  
 UGR 4H 8H  
 (20%, 50%, 70%) C0 / C90: **20.7 / 20.3**

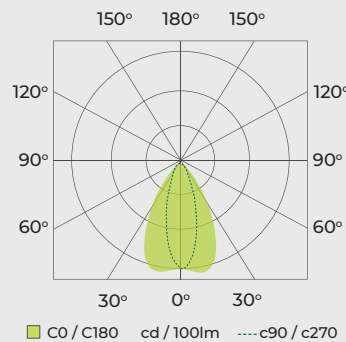
#### Luminous Intensity



### ELB16RS40 Luminaire Performance

Luminaire Efficiency: **100%**  
 Luminaire Efficacy: **143lm/W**  
 Classification: **A60 ±100% ±0%**  
 CIE Flux Codes: **80 94 99 100 100**  
 UGR 4H 8H  
 (20%, 50%, 70%) C0 / C90: **22.2 / 19.3**

#### Luminous Intensity



**LUCECO**

This luminaire contains built-in LED lamps.

**LED**

The lamps cannot be changed in the luminaire.

874/2012

STANDARD	DESCRIPTION
EN 60598-1	Luminaires – General requirements
EN 60598-2-1	Luminaires – Fixed general purpose
EN 60598-2-22	Luminaires – Emergency
EN 61000-3-2	Electromagnetic compatibility (EMC) – Part 3-2: Limits – for harmonic current emissions
EN 61000-3-3	Limits – Limitation of voltage changes, voltage fluctuations and flicker in public low-voltage supply systems, for equipment with rated current ≤ 16 A per phase and not subject to conditional connection
EN 61547	Equipment for general lighting purposes – EMC immunity requirements
EN 55015	Limits and methods of measurement of radio disturbance characteristics of electrical lighting and similar equipment

