



Euro Module

WIRING ACCESSORIES



www.bgelectrical.uk



Euro Module

Wiring Accessories

A flexible range of plates and interchangeable modules, available in varied finishes and profiles.

These Euro Module range includes Audio, Speaker, TV Coax, Satellite, Radio, Telephone, Video and HDMI outlets in a range of finishes. We also stock USB Charging Euro Modules, USB Data inserts including USB 3.1A and a wide range of Euro Module front plates.

Euro Module is available in Nexus Metal, White Moulded, Screwless Flatplate, Metal Clad, Part M and Evolve ranges – 14 stocked finishes in total.



Evolve



IN THE RANGE

Front Plates	53
TV, Radio & Satellite Modules	55
Blank Modules	56
Telecom & Data Modules	56
Power Modules	56
USB Modules	57
Switch Modules	58
Touch Dimmer Modules	58
Fused Modules	58
RCA, Flex & HDMI Outlets	59



BG Electrical products are guaranteed against faulty materials and workmanship for a period of 25 years from date of delivery.

Features & Benefits



Telecom



Data



Broadcast Reception

Power



Front Plates – Evolve

- Compatible with the wider Euro Module range of products
- Assemble different configurations onto a single faceplate
- Manufactured to BS 5733



Single Plate 1M – 25 x 50	Single Plate 2M – 50 x 50	Double Plate 4M – 100 x 50	Finish	Frame & Module Colour
PCDCLEMS1W	PCDCLEMS2W	PCDCLEMR4W	Pearlescent White	White
PCDBSEMS1W	PCDBSEMS2W	PCDBSEMR4W	Brushed Steel	White
PCDMGEMS1B	PCDMGEMS2B	PCDMGEMR4B	Matt Grey	Black
PCDMBEMS1B	PCDMBEMS2B	PCDMBEMR4B	Matt Black	Black
PCDDBEMS1B	PCDDBEMS2B	PCDDBEMR4B	Matt Blue	Black
PCDCPEMS1B	PCDCPEMS2B	PCDCPEMR4B	Polished Copper	Black
PCDSBEMS1B	PCDSBEMS2B	PCDSBEMR4B	Satin Brass	Black
PCDBCEMS1B	PCDBCEMS2B	PCDBCEMR4B	Black Chrome	Black



PCDSBEMR4B



PCDBSEMS2W



PCDMGEMS1B

Front Plates – White Moulded

- Manufactured to BS 5733
- Anti-microbial certified
- Aperture sizes:
1 Module: 25 x 50mm, 2 Module: 50 x 50mm, 4 Module: 100 x 50mm

Product Code	Description	Inner Carton	Outer Carton
8EMS1	1 module – square	20	200
8EMS2	2 module – square	10	100
8EMR4	4 module – rectangular	10	100
8EM8	2 x 4 module, double stack plate	10	100



8EMS1



8EM8

Front Plates – Metal Clad

- Manufactured to BS 5733
- Fitted with earth terminal
- Aperture sizes:
1 Module: 25 x 50mm, 2 Module: 50 x 50mm, 4 Module: 100 x 50mm

Product Code	Description	Inner Carton	Outer Carton
MC5EMS1	1 module – square	20	200
MC5EMS2	2 module – square	10	100
MC5EMR4	4 module – rectangular	10	100



MC5EMR4



MC5EMS2

Front Plates – Part M

- Manufactured to BS 5733
- Clip on cover with concealed fixing screws
- Aperture sizes:
1 Module: 25 x 50mm, 2 Module: 50 x 50mm, 4 Module: 100 x 50mm

Product Code	Description	Inner Carton	Outer Carton
PMEMS1	1 module – square	20	200
PMEMS2	2 module – square	10	100
PMEMR4	4 module – rectangular	10	100



PMEMR4



PMEMS1

Front Plates – Nexus Metal

- Manufactured to BS 5733
- Fitted with earth terminal
- Aperture sizes:
1 Module: 25 x 50mm, 2 Module: 50 x 50mm, 4 Module: 100 x 50mm

Brushed Steel	Polished Chrome	Black Nickel	Description	Inner Carton	Outer Carton
NBSEMS1	NPCEMS1	NBNEMS1	1 module – square	20	200
NBSEMS2	NPCEMS2	NBNEMS2	2 module – square	10	100
NBSEMR4	NPCEMR4	NBNEMR4	4 module – rectangular	10	100



NBSEMS1



NBNEMS1

Front Plates – Screwed Flatplate

- Manufactured to BS 5733
- Fitted with earth terminal
- Anti-fingerprint lacquer
- Aperture sizes:
1 Module: 25 x 50mm, 2 Module: 50 x 50mm, 4 Module: 100 x 50mm

Brushed Steel	Description	Inner Carton	Outer Carton
SBSEMS1	1 module – square	20	200
SBSEMS2	2 module – square	10	100
SBSEMR4	4 module – rectangular	10	100



SBSEMS2

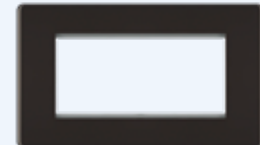


SBSEMS1

Front Plates – Screwless Flatplate

- Manufactured to BS 5733
- Fitted with earth terminal
- Aperture sizes:
1 Module: 25 x 50mm, 2 Module: 50 x 50mm, 4 Module: 100 x 50mm

Brushed Steel	Polished Chrome	Black Nickel	Description	Inner Carton	Outer Carton
FBSEMS1	FPCEMS1	FBNEMS1	1 module – square	20	200
FBSEMS2	FPCEMS2	FBNEMS2	2 module – square	10	100
FBSEMR4	FPCEMR4	FBNEMR4	4 module – rectangular	10	100



FBSEMR4

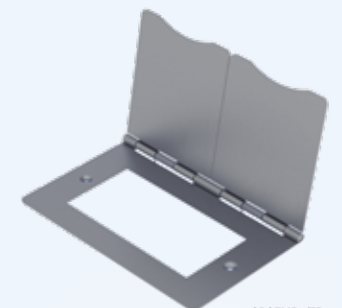


FPCEMS1

Front Plates – Spring Hinged Cover

- Ideal for floor sockets – an easy and convenient way to access mains electricity in busy locations where wall space is restricted
- Slimline screwed ultra flat clip on/off front plate
- Sprung hinges for durability
- Fitted with earth terminal
- Anti-fingerprint lacquer

Brushed Steel	Description	Inner Carton	Outer Carton
SBSEMS2/FR	2 module – square	10	100
SBSEMR4/FR	4 module – rectangular	10	100



SBSEMR4/FR

Quick & Easy to install

Step 1

Fix front plate to mounting box.

Step 2

Wire modules.

Step 3

Slot the module on the frame and click into place.



TV, Radio and Satellite Modules – Screened Outlets

- Screened outlets contain a metal casing around the contacts acting as an earthed faraday cage. This casing prevents external RF signals interfering with the reception
- Manufactured to BS 5733
- Aperture sizes:
1 Module: 25 x 50mm, 2 Module: 50 x 50mm



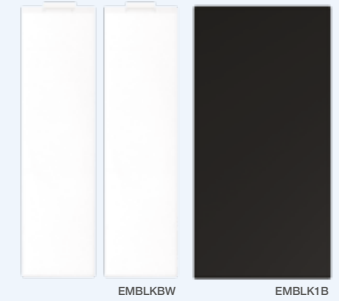
White	Grey	Black	Modules	Description	Inner Carton	Outer Carton
EMTVFW	EMTVFG	EMTVFB	1	IEC – female (return)	10	100
EMTVMW	EMTVMG	EMTVMB	1	IEC – male	10	100
EMSATW	EMSATG	EMSATB	1	Satellite – female	10	100
EMTVSATW	EMTVSATG	EMTVSATB	2	TV and satellite – IEC male + radio IEC female	10	100
EMTVFMW	EMTVFMG	EMTVFMB	2	TV and radio – TV IEC male + radio IEC female	10	100
EMTVFMSATW	EMTVFMSATG	EMTVFMSATB	2	TV, radio and satellite – TV IEC male + radio IEC female + satellite female	10	100
EMTVFMSAT2W	EMTVFMSAT2G	EMTVFMSAT2B	2	TV, radio and dual satellite module – TV IEC male + radio IEC female + dual satellite female	10	100

Module Description

Technical Information – Screened Outlets	Frequency Range (MHz)	Insertion Loss (dB)
Single TV Module – IEC male / female	0-862	0.5
Double TV and satellite module – IEC male + satellite female	TV – 5-68, 470-862 Satellite – 950-2400	TV – 1.0 Satellite – 2.0
Triple TV, radio and satellite module – TV IEC male + radio IEC female + satellite female	TV – 5-68, 470-862, Radio – 88-230, Satellite – 950-2400	TV – 1.0, Radio – 1.0, Satellite – 2.0
Single satellite module – satellite female	0-2400	2.0
Double TV and radio module – TV IEC male + radio IEC female	TV – 5-68, 470-862 Radio – 88-108	TV – 1.0 Radio – 1.0
Quadruple TV, radio and dual satellite module – TV IEC male + radio IEC female + dual satellite female	TV – 5-68, 470-862, Radio – 88-230 SAT1 – 950-2400, SAT2 – 0-2400	TV – 1.0, Radio – 1.0, SAT1 – 2.0, SAT2 – 2.0

Blank Modules

- Module blanks are ideal for covering up unused space in your Euro-module plate
- Aperture sizes:
1/2 Module: 6.25 x 50mm
1 Module: 12.5 x 50mm



White	Grey	Black	Modules	Description	Inner Carton	Outer Carton
EMBLKW	EMBLKG	EMBLKB	1/2 (each)	Blank (2pcs)	10	100
EMBLK1W	EMBLK1G	EMBLK1B	1	Blank (1pc)	10	100

TV, Radio and Satellite Modules – Non-Screened Outlets

- Manufactured to BS 5733
- Aperture sizes:
1 Module: 25 x 50mm



White	Grey	Black	Modules	Description	Inner Carton	Outer Carton
EMNSTW	EMNSTVG	EMNSTVB	1	Co-axial connection	10	100
EMNSITW	EMNSITVG	EMNSITVB	1	Co-axial (isolated) connection	10	100
EMNSSATW	EMNSSATG	EMNSSATB	1	Satellite connection – female	10	100

Telecom and Data Modules

- Shuttered sockets
- Manufactured to BS 6312-2
- Aperture sizes:
1 Module: 25 x 50mm



White	Grey	Black	Modules	Description	Inner Carton	Outer Carton
EMBTMSW	EMBTMSG	EMBTMSB	1	Telephone – BT master (screw)	10	100
EMBTMIW	EMBTMIG	EMBTMIB	1	Telephone – BT master (IDC)	10	100
EMBTSSW	EMBTSSG	EMBTSSB	1	Telephone – BT secondary (screw)	10	100
EMBTSIW	EMBTSIG	EMBTsIB	1	Telephone – BT secondary (IDC)	10	100
EMRJ11W	EMRJ11G	EMRJ11B	1	Telephone – RJ11 (screw)	10	100
EMRJ45C5EW	EMRJ45C5EG	EMRJ45C5EB	1	Data – RJ45, CAT5E (IDC)	10	100
EMRJ45C6W	EMRJ45C6G	EMRJ45C6B	1	Data – RJ45, CAT6 (IDC)	10	100

Power Modules

- 13 Amp UK socket manufactured to BS 1363-2
- Aperture sizes:
1 Module: 25 x 50mm
2 Module: 50 x 50mm



White	Grey	Black	Modules	Description	Inner Carton	Outer Carton
EMUKSW	EMUKSG	EMUKSB	2	13 Amp (UK) unswitched socket	10	100
EMUNVW	EMUNVG	EMUNVB	2	Universal unswitched socket	10	100
EMEUSW	EMEUSG	EMEUSB	1	16 Amp 2 pin unswitched socket	10	100
EMSCHSW	EMSCHSG	EMSCHSB	2	16 Amp Schuko unswitched socket	10	100
EM2ASW	EM2ASG	EM2ASB	2	2 Amp round pin unswitched socket	10	100
EM5ASW	EM5ASG	EM5ASB	2	5 Amp round pin unswitched socket	10	100

Nexus
GRID
MODULAR SYSTEM

www.bg-nexusgrid.uk



USB Charger Modules

- The USB charger is suitable for charging portable electronic devices via a USB 2.0 type A plug
- Total charger output current is 3.1A. This can be delivered from one socket or divided between the two as required and controlled by the devices being charged
- Manufactured to IEC 61558-2-16
- Terminal capacity 1 x 2.5mm² or 1 x 4.0mm²
- Minimum box depth 35mm

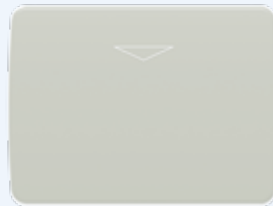


EMUSB3B

White	Grey	Black	Modules	Description	Inner Carton	Outer Carton
EMUSB3W	EMUSB3G	EMUSB3B	2	3.1A USB charger – 2 port	10	100

16 Amp Hotel Key Card Switch

- 50 x 50mm Euro Module
- Load Rating – 1800W for incandescent, 800W for fluorescent
- 30 second power-off delay
- Saves energy and improves safety
- Power to the room will active when a key card inserted
- Locator LED ideal for night operation
- Mounting box depth 47mm
- Colour coded terminals with backed-out and captive screws
- Designed and manufactured to BS EN 60669-2-1

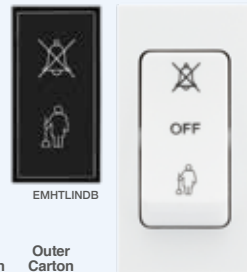


EMKYCSG

White	Grey	Black	Modules	Description	Inner Carton	Outer Carton
EMKYCSW	EMKYCSG	EMKYCSB	2	16 Amp key card switch	10	100

Hotel Room Indicator + Switch

- Manufactured to BS 1363-2, BS EN 60669-1
- Mounting box depth 47mm
- Do not Disturb (Red) and Make-up room (Green) LED indicators



EMHTLINDB

EM3SW42W

White	Grey	Black	Modules	Description	Inner Carton	Outer Carton
EM3SW42W	EM3SW42G	EM3SW42B	1	3 position switch	10	100
EMHTLINDW	EMHTLINDG	EMHTLINDB	1	Status indicator	10	100

13 Amp Key Controlled Switched Socket

- Manufactured to BS 1363-2, BS EN 60669-1
- Mounting box depth 47mm
- Terminal capacity 3 x 2.5mm², 2 x 4.0mm², 1 x 6.0mm²
- Lockable socket, supplied with two keys
- Double pole switch



EMKYSWSW

White	Grey	Black	Modules	Description	Inner Carton	Outer Carton
EMKYSWSW	EMKYSWSG	EMKYSWSB	4	13 Amp double pole key controlled switched socket	10	100

Switch Modules

- Terminal capacity 4 x 1.0mm², 4 x 1.5mm², 2 x 2.5mm² & 1 x 4.0mm²
- Manufactured to BS EN 60669-1
- Minimum mounting box depth 25mm



EMSW13W

EMSW13G

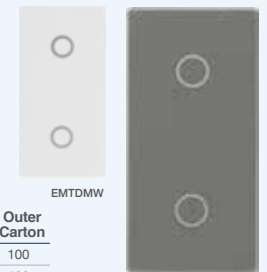
EMSW13B

White	Grey	Black	Modules	Description	Inner Carton	Outer Carton
EMSW12W	EMSW12G	EMSW12B	1	20 AX 2 way switch	10	100
EMSW13W	EMSW13G	EMSW13B	1	10 AX intermediate switch	10	100
EMSW12KYW	EMSW12KYG	EMSW12KYB	1	20 AX 2 way key switch	10	100
EMSW12ELW	EMSW12ELG	EMSW12ELB	1	20 AX 2 way key switch – emergency lighting	10	100
EMSW30KYW	EMSW30KYG	EMSW30KYB	1	20 Amp DP key switch	10	100
EMSW30W	EMSW30G	EMSW30B	1	20 Amp DP switch	10	100

Touch Dimmer Modules

Intelligent trailing edge dimmer suitable for LED, halogen, CFL and incandescent lamps

- Soft start, smooth dimming control and silent operation
- Overload protection
- Clearly marked terminals with backed out captive screws for easy installation
- Terminal capacity 3 x 1mm², 2 x 1.5mm² & 1 x 2.5mm²
- Manufactured to BS EN 60669-2-1
- Minimum mounting box depth 25mm



EMTDMW

EMTDMG

White	Grey	Black	PC White	Modules	Description	Inner Carton	Outer Carton
EMTDMW	EMTDMG	EMTDMB	EMTDMPCWH	1	Touch LED dimmer, master	10	100
EMTDSW	EMTDSG	EMTDSB	EMTDSPCWH	1	Touch LED dimmer, secondary	10	100

Fused Modules

- Manufactured to BS 1363 Part 4
- Terminal capacity 3 x 2.5mm², 2 x 4.0mm² & 1 x 6.0mm²
- Supplied with pre-fitted 13 Amp fuse
- Minimum mounting box depth 25mm
- Clearly marked terminals with backed out captive screws for easy installation



EMFUSEW

EMFUSEG

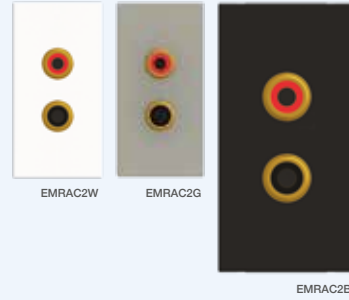
EMFUSEB

White	Grey	Black	Modules	Description	Inner Carton	Outer Carton
EMFUSEW	EMFUSEG	EMFUSEB	1	13 Amp fused module	10	100



RCA X2 Outlet

- Manufactured to BS 5733
- RCA/phono cable outlets used to carry audio and video signals
- Screw terminals



White	Grey	Black	Modules	Description	Inner Carton	Outer Carton
EMRCA2W	EMRCA2G	EMRCA2B	1	RCA x 2 outlet	10	100

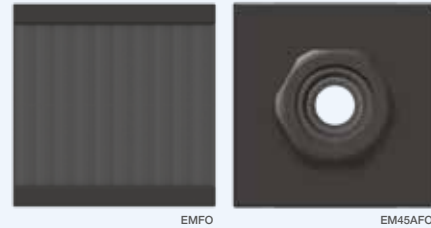
Flex Outlets

Brush Flex Outlet

- Ideal for home entertainment cable management
- Brushes protect cables and prevent movement
- Ideal for cavity walls

45 Amp Flex Outlet

- Black M20 cable gland, supplied with 3 way terminal



Product Code	Modules	Description	Inner Carton	Outer Carton
EMFO	2	Brush flex outlet	10	100
EM45AFO	2	45 Amp flex outlet	10	100

HDMI Outlet

- Manufactured to BS 5733
- Female HDMI front and rear outlet
- 90° connection to help with limited space in wall void
- Suitable for high speed, HDMI 1.4 standard: 4K Ultra HD compatible and 3D compatible at 4,25 and 30 fps
- Maximum bitrate of 10.2 Gbps



White	Grey	Black	Modules	Description	Inner Carton	Outer Carton
EMHDMW	EMHDMIG	EMHDMIB	2	HDMI outlet	10	100

Combination Plate

- Twin earth fitted as standard to allow a double earth facility for installations requiring
- High integrity protective connection Ref. BS 7671:2008
- Manufactured to BS 1363 Part 2
- Terminal capacity 3 x 2.5mm², 3 x 4.0mm² & 2 x 6.0mm²
- Mounting box depth 47mm (HGS07/C4)
- Modules of mains and extra low voltage rating must not be fitted to the same front plate aperture Ref. BS 7671:2008



Product Code	Description	Inner Carton	Outer Carton
822EM4	1 x double socket + 1 x 4 module aperture – Nexus Moulded	1	5
822EM8	2 x double socket + 2 x 4 module aperture – Nexus Moulded	1	5
NBS222EM8G	2 x double socket + 2 x 4 module aperture – Nexus Metal Brushed Steel	1	5
NPC222EM8W	2 x double socket + 2 x 4 module aperture – Nexus Metal Polished Chrome	1	5
NBN222EM8B	2 x double socket + 2 x 4 module aperture – Nexus Metal Black Nickel	1	5

Euro Module Range Extension

Quick & Easy Installation

A flexible solution of power, data, telephone, television and audio combinations to suit the wide ranging needs of the customer.

- Select the desired combination of front plate and module(s)
- Simple installation, wire the module through the front plate aperture then push the module into place
- Modules of mains and extra low voltage rating must not be fitted to the same front plate aperture Ref. BS 7671:2008

See page 53, 55, 56



**UK:****HEAD OFFICE:**

Email: info@bgelectrical.uk

Luceco plc, Caparo House
103 Baker Street, London
England, W1U 6LN

DISTRIBUTION CENTRE:

Tel: +44 (0) 1952 238 100

Email: uk_sales@bgelectrical.uk

Luceco plc
Luceco Distribution Centre
Stafford Park 1, Telford
Shropshire, England, TF3 3BD

FRANCE:

Email: fr_sales@luceco.com

ITALY:

Email: it_sales@luceco.com

SPAIN:

Tel: +34 93 829 55 75

Email: es_sales@luceco.com

Nexus Industries LTD
C/ Bobinadora 1-5
08302 Mataró
Barcelona (SPAIN)

MIDDLE EAST & AFRICA:

Tel: +971 4 609 1867

Email: mea_sales@luceco.com

Luceco Middle East FZCO
Bldg. 5EB, Office 342
PO Box 371128, DAFZA
Dubai, UAE

ASIA PACIFIC:**JIAXING:**

Tel: +86 (0) 573 8357 0200

Email: asia_sales@luceco.com

No 1438, Jiachuang Road
Xiuzhou Industrial Park, Jiaxing
Zhejiang, China, P.C. 314031

HONG KONG:

Email: hk_sales@luceco.com

UNITED STATES:

Email: us_sales@luceco.com

MEXICO & LATIN AMERICA:

Tel: +52 (81) 5000 9437

Email: ventas@luceco.com

Luceco México
AV Lázaro Cárdenas #318 int 201
Col Real San Agustín
San Pedro Garza García
N.L. Mexico CP 66278

TECHNICAL SUPPORT:

Tel: 03300 249 279

Email: technical.support@bg-electrical.co.uk

Lines open Monday to Friday
8.30am to 5pm, with answer phone
service outside these hours.

