



Optical Smoke Alarm

Warnings:

- To prevent injury, this alarm must be securely attached to the ceiling/wall in accordance with the installation instructions.
- Batteries should not be exposed to excessive heat such as sunshine, fire or the like.
- Do not paint or cover the smoke alarm.

Where not to install a smoke alarm

- In an environment with a high risk of draught (e.g. close to air conditioning, fans and ventilation outlets). The movement of air can impair the penetration of fire smoke into the smoke alarm.
- Areas where combustions regularly occurs, such as kitchens.
- Areas with high humidity such as bathrooms, or close to devices such as dish washers or washing machines.

Alarm silence facility

When the smoke alarm has detected smoke and activates, you can mute the alarm for a minimum of 5 minutes and a maximum of 15 minutes by pressing the test button. After that, the smoke alarm automatically resets and returns to normal operation mode. If there are still particles of combustion in the air, the smoke alarm will activate again. **WARNING:** Before using the alarm silence facility, always identify the cause of the alarm and make sure that the circumstances are safe.

Low battery mode

When the battery is running low, the smoke alarm will indicate this with a repetitive beep and flash for approximately 30 days. **WARNING:** This smoke alarm is equipped with a non-replaceable battery. When this warning occurs, replace the device as soon as possible! The acoustic low battery warning signal can be muted for ten hours by pressing the test button. The smoke alarm is still functioning and able to detect smoke when it's in this mode.

Fault warning mode

When the smoke alarm is not functioning properly, it will activate the fault warning mode. Try cleaning the smoke alarm (see paragraph maintenance) or replace the smoke alarm.

Overview visual & acoustic signals

Operating mode	Visual signal (flash)	Acoustic signal (beep)	Description
Normal	1 x per 40 seconds	None	Device is functioning properly
Test	1 x per second (3 x) / pause of 1.5 seconds	1 x per second (3 x) / pause of 1.5 seconds	Device is being tested
Alarm	1 x per second (3 x) / pause of 1.5 seconds	1 x per second (3 x) / pause of 1.5 seconds	Device has detected smoke
Alarm silence	1 x per 8 seconds	None	Smoke alarm is muted
Low battery warning	1 x per 40 seconds (simultaneously with beep)	1 x per 40 seconds (simultaneously with flash)	Battery is running low
Low battery warning silence	1 x per 40 seconds	None	Low battery warning is muted
Fault warning	1 x per 40 seconds (alternating with beep)	1 x per 40 seconds (alternating with flash)	Device is not functioning properly

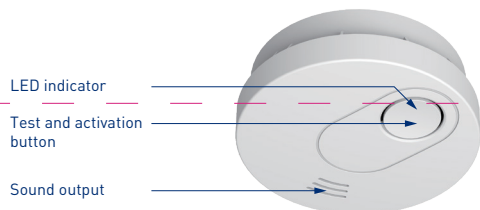
Safety Warning:

This user guide contains important information on operating and using this device. Keep this user guide in a safe place for future reference. These instructions are a part of this product – bear this in mind if you pass on this product to others. Please take a few minutes to thoroughly read the user guide and familiarise yourself with its operation.

For your safety, this product must be installed in accordance with local Building Regulations. **This product MUST be installed by a competent person who is registered with an electrical self-certification scheme.** Further information is available online or from your Local Authority. Please read carefully and use in accordance with these safety wiring instructions. Before commencing any electrical work ensure the supply is disconnected, and securely locked off. Wiring should be in accordance with the latest edition of the IET regulations (BS 7671).

Product description and intended use

This is a smoke alarm with an optical sensor for installation in residential buildings, apartments and rooms with residential-like use. Smoke alarms are designed to provide an early warning of fire and smoke, so that residents can react appropriately. Always consult local regulations for smoke alarms.



Recommended location for alarms

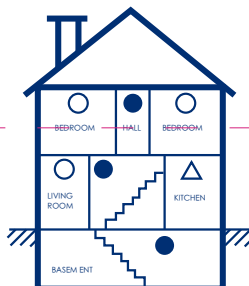
Smoke alarms must be installed in such a way that they can be reached unhindered by the fire smoke so that fires can be reliably detected as they develop.

- Install in sleeping areas (especially children's rooms).
- Install in escape routes.
- In the middle of the ceiling of a room.
- At least 50 cm away from the wall and other objects.
- Maximum installation height of 6 metres.
- If ceiling installation is not possible, the smoke alarm can be installed on the wall. The distance to the ceiling should be between 30 and 50 centimetres.

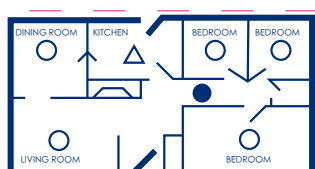
Warning: Not suitable for use in leisure accommodation vehicles(LAVs)

- Smoke Alarms for Minimum Protection
- Smoke Alarms for Additional Protection
- △ Heat Alarm

MULTIPLE FLOOR PLAN

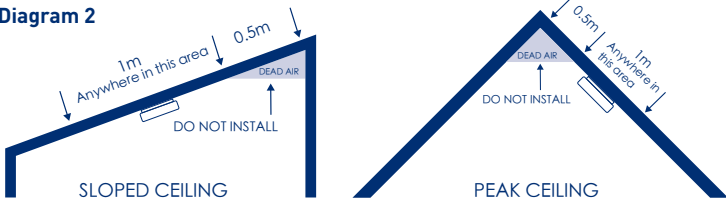


SINGLE FLOOR PLAN



- Smoke alarms in rooms with ceiling slopes greater than 1m in 8m horizontally should be located on the high side of the room.
- Smoke alarms installed on sloped or peaked ceilings should be located between 0.5m and 1.5m from the highest point of the ceiling. (See Diagram 2)

Diagram 2



Technical:

Product specifications

Detection method	Optical
Power supply	Sealed in 3V DC non-rechargeable lithium battery
Battery lifetime	10 years
Alarm volume	> 85 dB (A) at 3 meters
Alarm sensitivity	0,123 - 0,170 dB/m
Monitored area	20 - 40 m ²
Operating temperature	0 °C - 40 °C
Operating humidity	< 93 %
Date of replacement	See product label
Individual alarm indicator	Yes
Alarm silence facility	Yes Hush time: 5-15 minutes
Low battery warning	Yes
Low battery silence facility	Yes Hush time: 10 hours
Mounting location	Ceiling or wall
Interconnectable	No
Standards	EN14604:2005

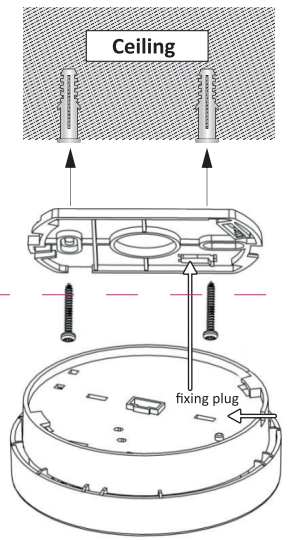
Activation

Before commissioning the smoke alarm, it is important to activate it and test it for correct operation.

- Press the test button and hold it for approximately 3 seconds until the LED indicator lights up. Release the test button immediately after this. The smoke alarm will generate a beep to indicate that it's activated.
- Test the correct activation of your smoke alarm by pressing the test button. If no sound is generated, the smoke alarm is not activated properly and should not be used!

Mounting Instructions

- Place the installation mounting plate in the desired installation location and mark where the holes should be drilled.
 - Drill two holes with a 5mm drill bit.
 - Fit the two plastic plugs into the holes with a hammer.
 - Remove the fixing plug from the mounting plate (if necessary, use a screw driver for this).
 - Insert the screws into the mounting plate, and tighten them firmly into the plugs.
 - Place the smoke alarm on the mounting bracket and secure it by turning it clockwise.
 - Insert the fixing plug into the hole between the mounting plate and the smoke alarm to fix your alarm.
- Test the correct operation of your smoke alarm by pressing the TEST button. If no sound is generated, the smoke alarm is not functioning properly and should not be used!



Prepare an escape plan

- Make a floor plan which shows all doors and windows, with at least two escape routes from each room.
- Have a meeting with all occupants to discuss the escape plan, showing everyone what to do in case of a fire.
- Designate a place outside where everyone can meet if a fire occurs.
- Practice a fire drill every 6 months, including fire drills at night. Ensure small children hear the alarm and wake when it sounds. They must wake up and it is important that they know what to do.
- Current studies have shown that smoke alarms may not wake all sleeping individuals, and that it is the responsibility of individuals in the household that are capable of assisting others to provide assistance to those individuals.

What to do when the alarm sounds

- Alert small children in the home.
- Leave immediately using your escape plan. Every second counts so don't waste time getting dressed or picking up valuables.
- When leaving, don't open any internal doors without first feeling the surface. If it is hot or you see smoke seeping through the edges, don't open that door – use your alternative exit. If the door is cool, place your shoulder against it, open it slightly and be ready to slam it shut if heat and smoke rush in.
- Stay close to the floor if the air is smoky. Take shallow breaths through a wet cloth if possible.
- Once outside gather at your designated meeting place.
- Call the fire department from a neighbours home or mobile phone.
- Do not return to your home until the fire officials deem it safe to do so.

Maintenance

- Test this smoke alarm weekly using the test facility. If the smoke alarm functions correctly, it will generate a loud beep. Due to the volume of the alarm, make sure that you always stand at arms length from the unit when you are testing. If the smoke alarm does not make a sound, the smoke alarm must be replaced immediately.
- Clean the smoke alarm at least once every month to remove dirt, dust or debris. Use a vacuum cleaner with a soft brush and vacuum all sides and covers of the smoke alarm. Do not remove the top cover of the smoke alarm to clean it inside.
- Do not attempt to repair this smoke alarm. If the smoke alarm shows any damage which affects its functionality, it must be replaced!
Please note: False alarm is often caused by dust or steam.

Guarantee

BG Electrical products are guaranteed against faulty materials and workmanship for a period of 10 years from date of delivery: products will be repaired or (at BG Electrical's discretion) replacements will be supplied or (at BG Electrical's discretion) a credit note will be issued. This guarantee is subject to BG Electrical's conditions of sale and in particular to the following conditions being met:

- Notification of any defect is given to BG Electrical as soon as reasonably practicable after becoming apparent, and the products then returned to BG Electrical.
- The products have only been operated under normal operating conditions and have only been subject to normal use.
- No work (other than normal and proper maintenance) has been carried out to the products without BG Electrical's prior written consent.
- The products have been assembled, or incorporated into other goods, by a qualified and recognised electrician and only in accordance with any instructions issued by BG Electrical.
- The defect has not arisen from an item manufactured or supplied by a person other than BG Electrical. This guarantee does not affect any consumer statutory rights.

Batch Number Explanation

XX (year) XX (month) XX (date) X (serial number)

Address/Helpline

Luceco PLC
Stafford Park 1
Telford TF3 3BD
ENGLAND

[EU] Luceco SE
C/ Bobinadora 1-5
08302 Mataró
SPAIN

If you have further technical assistance you can get in touch with our **Technical Helpline on:**
+44 (0)3300 249 279
technical.support@bgelectrical.co.uk

Environmental Protection



This symbol is known as the "Crossed-out Wheelie Bin Symbol". When this symbol is marked on a product or battery, it means that it should not be disposed of with your general household waste. Some chemicals contained within electrical/electronic products or batteries can be harmful to health and the environment. Only dispose of electrical/electronic/battery items in separate collection schemes, which cater for the recovery and recycling of materials contained within. Your co-operation is vital to ensure the success of these schemes and for the protection of the environment.



22
DOP:SDLLSM-01
0359



22
DOP: SDLLSM-01
0786

EN 14604:2005+AC:2008

V1.0