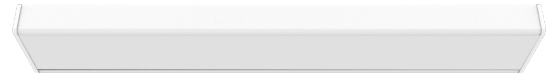
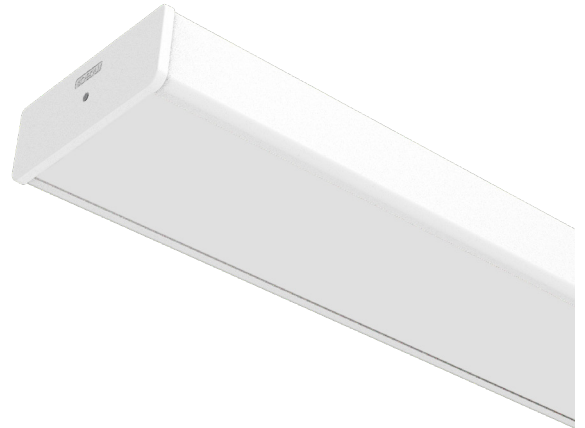


LITERA SUSPENDED

Product Features

- Direct/indirect continuous linear system, truly designed with the installation and application in mind achieving UGR19
- Slim aluminium extrusion finished in RAL9016, offers superior quality lighting for any commercial or educational environment including compliance with semi cylindrical illuminance values
- This complete solution offers blank infill sections, with through wiring as standard and options for emergency and wireless lighting controls
- Suspended system offers low-power and higher performance against conventional light sources with an efficacy up to 140lm/cw

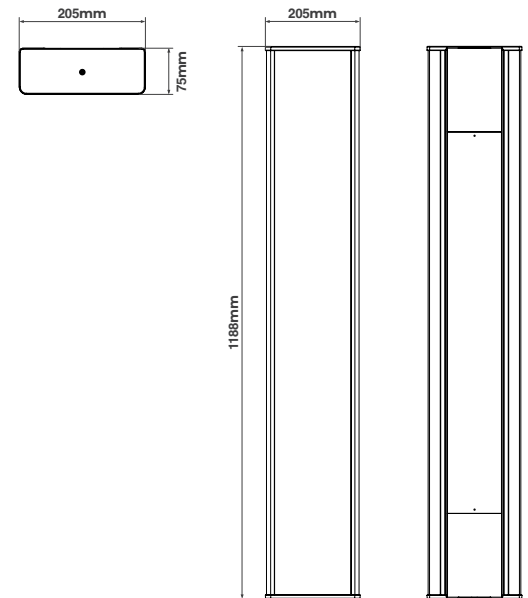


CAT NO.	DRIVER	LUMINAIRE LUMENS	WATTAGE	LLM/W
LIT12W38S40	Fixed Output	3800	27W	141
LIT12W38E40	Fixed Output + Emergency	3800	27W	141
LIT12W38D40	Digital Dimmable	3800	27W	141
LIT12W48S40	Fixed Output	4800	34W	141
LIT12W48E40	Fixed Output + Emergency	4800	34W	141
LIT12W48D40	Digital Dimmable	4800	34W	141
LIT12W58S40	Fixed Output	5800	42W	138
LIT12W58E40	Fixed Output + Emergency	5800	42W	138
LIT12W58D40	Digital Dimmable	5800	42W	138

Product Accessories

CAT NO.	DESCRIPTION
LITCON	Mechanical & Electrical Connector
LIT12BMOD	1200mm Blank Module
LIT12PMOD	1200mm PIR Module
LIT12EMOD	1200mm Emergency Module

Product Drawing



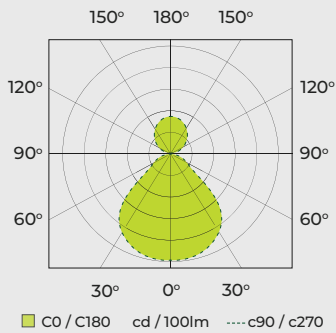
CAT NO.	WEIGHT (Kg)	UGR	CRI	FREQUENCY (Hz)	IK RATING	TEMP RANGE (°C)	AMBIENT TEMP RATED LIFE (°C)
LIT12WM38S40	TBC	<17	≥80	50-60hz	IK05	-20 +25	25
LIT12WM38E40	TBC	<17	≥80	50-60hz	IK05	0 +25	25
LIT12WM38D40	TBC	<17	≥80	50-60hz	IK05	-20 +25	25
LIT12WM48S40	TBC	<18	≥80	50-60hz	IK05	-20 +25	25
LIT12WM48E40	TBC	<18	≥80	50-60hz	IK05	0 + 25	25
LIT12WM48D40	TBC	<18	≥80	50-60hz	IK05	-20 +25	25
LIT12WM58S40	TBC	<19	≥80	50-60hz	IK05	-20 +25	25
LIT12WM58E40	TBC	<19	≥80	50-60hz	IK05	-20 +25	25
LIT12WM58D40	TBC	<19	≥80	50-60hz	IK05	-20 +25	25

LIT12WM38S40

Luminaire Performance

Light Output Ratio: 100%
 Luminaire Efficacy: 140.74lm/W
 Light Distribution: B53 \downarrow 71.7% \uparrow 28.3%
 CIE Flux Codes: 57 86 97 72 100
 UGR 4H 8H
 (20%, 50%, 70%) C0 / C90: 16.6 / 16.6

Luminous Intensity

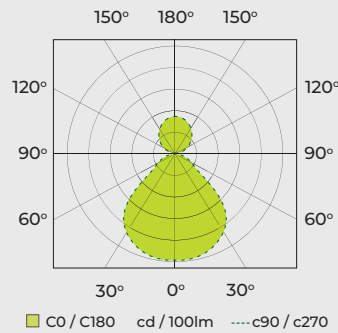


LIT12WM48S40

Luminaire Performance

Light Output Ratio: 100%
 Luminaire Efficacy: 141.18lm/W
 Light Distribution: B53 \downarrow 71.7% \uparrow 28.3%
 CIE Flux Codes: 57 86 97 72 100
 UGR 4H 8H
 (20%, 50%, 70%) C0 / C90: 17.4 / 17.4

Luminous Intensity

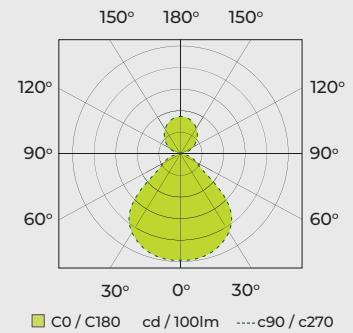


LIT12WM58S40

Luminaire Performance

Light Output Ratio: 100%
 Luminaire Efficacy: 138.1lm/W
 Light Distribution: B53 \downarrow 71.7% \uparrow 28.3%
 CIE Flux Codes: 57 86 97 72 100
 UGR 4H 8H
 (20%, 50%, 70%) C0 / C90: 18.1 / 18.1

Luminous Intensity



STANDARD	DESCRIPTION
60598-1	Luminaires – General requirements
60598-2-22	Luminaires – Emergency
61000-3-2	Electromagnetic compatibility (EMC) - Part 3-2: Limits – for harmonic current emissions
61000-3-3	Lamp controlgear – Part 1: General and safety requirements
61547	Equipment for general lighting purposes – EMC immunity requirements
55015	Limits and methods of measurement of radio disturbance characteristics of electrical lighting and similar equipment

