

NEW



JOBELINE  
Men's chef jacket Carter  
long sleeve  
30102949  
44,99 €  
p. 700



JOBELINE  
Apron Melek  
45x80 cm  
10005307  
26,99 €  
p. 618



NEW

JOBELINE  
Professional shoe  
Explorer Light Men  
30109806  
69,99 €  
p. 722





# CHEF CLOTHING

Look chic and still be dressed functionally: With our kitchen clothing, your team will always be dressed cool and uniform, from the kitchen to the service. The outfits offer the perfect mix of trendy style and comfort, combined with functionality.

Chef jackets & Chef shirts .....	684
Chef trousers .....	706
Chef aprons .....	715
Chef shirts .....	690, 716
Chef accessories .....	717



Chef jacket series Levi p. 697

## IN TREND: *denim*

Denim is a real all-round talent. Its high resistance makes it the ideal companion, whether in the kitchen or in the service.

Chef jacket series Adam  
& Amanda  
Piece only

74<sup>99</sup>



Chef jacket  
Professional  
Piece only

74<sup>99</sup>



JOBELINE



**Chef jacket series Adam & Amanda**

High quality classic men's and women's chef jacket made of the finest long staple cotton. With terry cloth band in the collar and two-piece upper arm pocket. Straight cut men's chef jacket in classic 6-buttonhole shape and with short back vent at hem. Slightly fitted women's chef jacket with three-quarter sleeves, modern center button placket and movement pleat in upper back.

Delivery includes ball buttons.

100% cotton. 175 g/m<sup>2</sup>. 95°C wash.

Back length women: 75 cm for size 36.

Back length men: 80 cm for size 50.

Color: white

- Delivery incl. ball buttons



**Men's chef jacket**

44, 46, 48, 50, 52, 54, 56,  
58, 60, 62, 64, 66  
long sleeve

126824  
Pcs./pack 1  
74,99 €



**Women's chef jacket 3/4 sleeve**

34, 36, 38, 40, 42, 44, 46, 48, 50, 52,  
54, 56  
3/4 sleeve

126832  
Pcs./pack 1  
74,99 €



- Fine terry cloth band in the collar for optimal sweat absorption

- Extra fine and noble fabric
- Hard-wearing and easy-care
- 2-divided upper arm pocket



JOBELINE

**Chef jacket Professional**

High-quality chef jacket for men and women made of finest, lightweight, long-staple cotton with grey piping on collar and sleeve hem. Center concealed button placket with snap fasteners, two-divided pen pocket on upper arm, bib apron loop at neck and cuffs with snap fasteners. The women's model has a slightly tailored cut.

100% cotton. 175 g/m<sup>2</sup>. 60°C wash.

Back length women: 73 cm for size 36.

Back length men: 79 cm for size 50.

Color: white/grey

- Extra lightweight fabric with fine and soft touch
- Hard-wearing and easy-care
- Modern concealed center button placket



**Women's chef jacket**

34, 36, 38, 40, 42, 44,  
46, 48, 50, 52, 54, 56  
long sleeve

120307  
Pcs./pack 1  
74,99 €



**Men's chef jacket**

44, 46, 48, 50, 52, 54,  
56, 58, 60, 62, 64, 66  
long sleeve

120309  
Pcs./pack 1  
74,99 €



- Bib apron loop in the neck



- 2-divided upper arm pocket

Chef jacket  
Premium Chef Men  
Piece from

53<sup>99</sup>

Chef jacket  
Premium Chef Women  
Piece from

53<sup>99</sup>



CHEF CLOTHING

JOBELINE

white/black 60° white 95°

**Chef jacket Premium Chef Men**

Classic chef jacket in 6-buttonhole shape made of mercerized, lightweight cotton twill fabric for best wearing comfort. With breast pocket, turn-up cuff and walking slits in the back, as well as 2-divided upper arm pocket. Delivery incl. ball buttons.

white: 100% cotton. 175 g/m<sup>2</sup>. 95°C wash.  
with black piping: 100% cotton. 175 g/m<sup>2</sup>. 60°C wash.  
Back length: 79 cm for size 50.

44, 46, 48, 50, 52, 54, 56, 58, 60, 62, 64, 66

JOBELINE

white/black 60° white 95°

**Chef jacket Premium Chef Women**

Classic chef jacket in 6-buttonhole shape made of mercerized, lightweight cotton twill fabric for best wearing comfort. With breast pocket, turn-up cuff and walking slits in the back, as well as 2-divided upper arm pocket. Delivery incl. ball buttons.

white: 100% cotton. 175 g/m<sup>2</sup>. 95°C wash.  
with black piping: 100% cotton. 175 g/m<sup>2</sup>. 60°C wash.  
Back length: 74 cm for size 36.

34, 36, 38, 40, 42, 44, 46, 48, 50, 52, 54, 56



**Men's chef jacket 1/2 sleeve**  
Color: white

118759  
Pcs./pack 1  
53,99 €



**Men's chef jacket long sleeve**  
Color: white

118760  
Pcs./pack 1  
54,99 €



**Women's chef jacket 1/2 sleeve**  
Color: white

115428  
Pcs./pack 1  
53,99 €



**Women's chef jacket long sleeve**  
Color: white

115427  
Pcs./pack 1  
54,99 €



**Men's chef jacket 1/2 sleeve black piping**  
Color: white/black

115426  
Pcs./pack 1  
53,99 €



**Men's chef jacket long sleeve black piping**  
Color: white/black

115425  
Pcs./pack 1  
54,99 €



**Women's chef jacket 1/2 sleeve black piping**  
Color: white/black

118755  
Pcs./pack 1  
53,99 €



**Women's chef jacket long sleeve black piping**  
Color: white/black

118756  
Pcs./pack 1  
54,99 €

- Fine and durable material
- With patch breast pocket
- 2-divided upper arm pocket
- Optionally in white or with black piping
- Chef jacket incl. ball buttons

**Customizing**  
more info at  
[www.lusini.com](http://www.lusini.com)

Headscarf Bandana p. 719

Ball buttons p. 717

Apron Botero p. 631

**Best  
SELLER**

Chef jacket Aila / Chef jacket Samuel

- With breast pocket
- Delivery incl. ball buttons
- Straight fit
- Especially easy-care & durable

Chef jacket  
Aila  
Piece from

**23<sup>99</sup>**

Chef jacket  
Samuel  
Piece from

**21<sup>99</sup>**

# Classic

# ALL-ROUNDER



white

**Men's chef jacket  
long sleeve white**

118762  
Pcs./pack 1  
23,99 €



white

**Men's chef jacket  
1/2 sleeve white**

118761  
Pcs./pack 1  
21,99 €



white

**Women's chef jacket  
long sleeve white**

165867  
Pcs./pack 1  
25,99 €



white

**Women's chef jacket  
1/2 sleeve white**

165866  
Pcs./pack 1  
23,99 €



white/black

**Men's chef jacket  
long sleeve  
colored piping**

115434  
Pcs./pack 1  
24,99 €



white/black

**Men's chef jacket  
1/2 sleeve  
colored piping**

115433  
Pcs./pack 1  
22,99 €



white/black

**Women's chef  
jacket long sleeve  
colored piping**

165864  
Pcs./pack 1  
26,99 €



white/black

**Women's chef  
jacket 1/2 sleeve  
colored piping**

165865  
Pcs./pack 1  
24,99 €

JOBELINE

## Chef jacket Samuel

Easy-care men's chef jacket in half and long sleeve with colored piping or in white. In classic 6-buttonhole shape with breast pocket and turn-up cuff in long sleeve. Straight cut. Delivery incl. ball buttons.

white: 100% cotton. 215 g/m<sup>2</sup>. 95°C wash.

colored piping: 100% cotton. 215 g/m<sup>2</sup>. 60°C wash.

Back length: 79 cm for size 50.

Color: white, white/blue, white/bordeaux, white/black

44, 46, 48, 50, 52, 54, 56, 58, 60, 62, 64, 66

colored piping white

JOBELINE

## Chef jacket Aila

Easy-care women's chef jacket in half and long sleeve with colored piping or in white. In classic 6-buttonhole shape with breast pocket and turn-up cuff in long sleeve. Straight cut. Delivery incl. ball buttons.

white: 100% cotton. 215 g/m<sup>2</sup>. 95°C wash.

colored piping: 100% cotton. 215 g/m<sup>2</sup>. 60°C wash.

Back length: 73 cm for size 36.

Color: white, white/blue, white/bordeaux, white/black

34, 36, 38, 40, 42, 44, 46, 48, 50, 52, 54, 56

colored piping white

# CLASSIC ELEGANCE

## with functional details

Chef jacket  
Advanced  
Piece only

**69<sup>99</sup>**



### Classic shirt collar

Make a statement: classy look with fixed button-down collar

### Upper arm pocket

Thanks to 2-divided upper arm pocket, you always have your thermometer at hand

### Concealed button placket

Snap button placket allows quick dressing and undressing

### Optimal ventilation

Opaque mesh inserts on the sides and under the sleeves provide optimal ventilation and climate regulation

### Roll-up sleeves

Practical detail. Regulate the sleeve length of your jacket

black

white



### Men's chef jacket

44, 46, 48, 50, 52, 54, 56, 58, 60, 62, 64, 66 long sleeve

124914 Pcs./pack 1 69,99 €

### Women's chef jacket

34, 36, 38, 40, 42, 44, 46, 48, 50, 52, 54, 56 long sleeve

124910 Pcs./pack 1 69,99 €

### JOBELINE

### Chef jacket Advanced



Chef jacket for men and women made of particularly lightweight, breathable and moisture-regulating functional material WERIN® TEC Light. With mesh inserts on the sides and lower sleeve section for optimum ventilation. Long sleeves with roll-up function. With breast pocket and 2-divided upper arm pocket on the left sleeve. Closable by snap buttons with concealed snap placket. The women's model is slightly waisted cut.

58% cotton 42% polyester. 180 g/m<sup>2</sup>. 60°C wash.

Back length women: 75 cm for size 36.

Back length men: 81 cm for size 50.

Color: black, white



■ Collar with hidden button down function for fixation



■ Long sleeve with practical roll-up function



CHEF CLOTHING







Chef shirt series  
Joker  
Piece only  
**39<sup>99</sup>**

JOBELINE

**Chef shirt series Joker**

Women's and men's chef shirt Joker made of breathable, cooling and moisture-regulating material. Women's shirt with mesh inserts in the underarm area, in the movement slit in the back and on the side of the hem. Contrast piping on collar, sleeves and the side mesh inserts. Seam zipper on left under arm for easier dressing. Men's shirt with contrast piping on the collar and raglan sleeves, as well as the waist seams in the front. Mesh inserts in the underarm area and upper back. Integrated zipper at the collar neckline underlaid with contrasting mesh.

76% cotton, 24% polyester stretch. 218 g/m<sup>2</sup>. 60°C wash.

Back length women: 65 cm for size 36.

Back length men: 77 cm for size 50.



graphite/white



white/grey



white/graphite



white/red/  
green

graphite/white

black/grey

black/red

**Women's chef shirt**

Color: graphite/white, white/graphite

34, 36, 38, 40, 42, 44, 46, 48, 50

1/2 sleeve

115442

Pcs./pack 1

39,99 €

**Men's chef shirt**

Color: graphite/white, black/grey, black/red,

white/grey, white/red/green

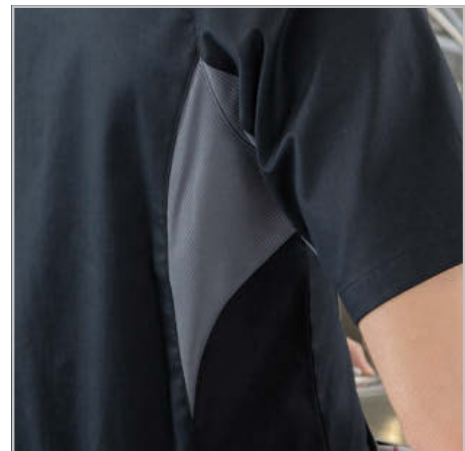
44, 46, 48, 50, 52, 54, 56, 58, 60, 62, 64, 66

1/2 sleeve

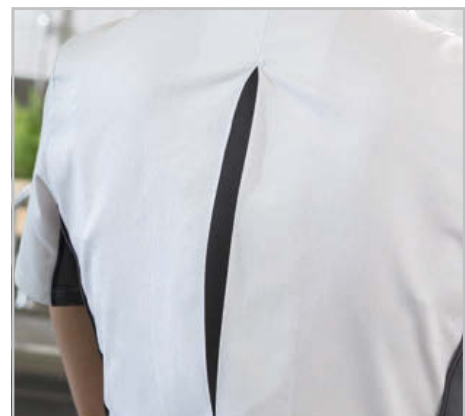
101861

Pcs./pack 1

39,99 €



■ Optimal ventilation due to air-permeable mesh inserts



■ Back pleat underlaid with mesh for perfect ventilation and freedom of movement



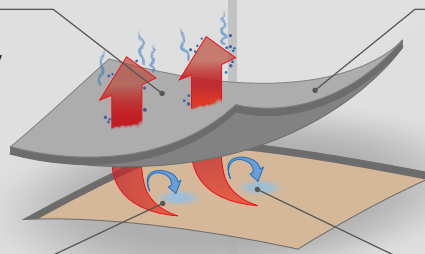
- Breathable thanks to opaque mesh inserts
- With stretch content for optimal freedom of movement

## INNOVATION BY JOBELINE

We know: Only those who feel good have power for the kitchen. That's why we look for innovations that make your life easier. The result: our functional material WERIN® TEC. So comfortable that nothing pinches. And thanks to active moisture management, you stay cool even when things get hot in the kitchen. So you are fully concentrated at work!

Dries quickly and is therefore quickly ready for use again

Active moisture management: sweat less, wash less!



Nothing pinches thanks to stretch content

Cooling effect by dissipating the accumulated heat on the skin: Simply feel good!

### Your benefits at a glance:

- Active moisture management
- Cooling effect
- Dimensional stability
- Quick drying surface
- Breathability
- Optimal freedom of movement due to stretch content

### Even thinner, even lighter

WERIN® TEC is now also available in light. WERIN® TEC Light is in no way inferior to its big brother: The fabric is breathable, dries quickly and cools by dissipating the accumulated heat on the skin. The only difference is that it is even lighter - and therefore ideal for chef clothing.



**WERIN® TEC & WERIN® TEC LIGHT**  
you will find in this catalog here:

Chef trousers Sweatpant	p. 708
Chef trousers Move	p. 709
Women's chef trousers Cosma	p. 714

Chef jacket Jannis  
Piece only

59<sup>99</sup>



JOBELINE

**Chef jacket Jannis**

Exclusive, lightweight chef jacket for men and women in field jacket look. With snap closure, two breast pockets, two-divided sleeve pocket and concealed mesh inserts on the sides of the back. Typical of the field jacket look: slight changes in color and washing may be possible with each wash. This provides over the wearing time for a unique and individual used look. 100% cotton. 210 g/m<sup>2</sup>. 40°C wash. Back length women: 67 cm for size 36. Back length men: 74 cm for size 50. Color: olive



- Cool field jacket style
- With concealed snap button placket
- Extra lightweight material



**Women's chef jacket**

34, 36, 38, 40, 42, 44, 46, 48, 50  
long sleeve

126425  
Pcs./pack 1  
59,99 €



**Men's chef jacket**

44, 46, 48, 50, 52, 54, 56, 58, 60  
long sleeve

120784  
Pcs./pack 1  
59,99 €



- Side slits with mesh inserts for optimal ventilation



- 2-divided upper arm pocket

Chef jacket Leon  
Piece from

68<sup>99</sup>

Chef jacket Luisa  
Piece from

68<sup>99</sup>



- Particularly easy-care and durable fabric
- Concealed snap button placket
- 2-divided upper arm pocket

JOBELINE

**Chef jacket Leon**

High quality chef jacket in textured fabric with grey piping on collar and sleeve hem. Concealed snap button placket and thermometer pocket. Straight, casual cut. Available in short and long sleeve. In long sleeve with turn-up cuff.

65% polyester, 35% cotton. 215 g/m<sup>2</sup>. 60°C wash.

Back length: 78 cm for size 50.

Color: black/grey, white/grey

44, 46, 48, 50, 52, 54, 56, 58, 60



black/grey

white/grey



black/grey

white/grey

**Men's chef jacket 1/2 sleeve**

1/2 sleeve

124288

Pcs./pack 1

68,99 €

**Men's chef jacket**

long sleeve

101148

Pcs./pack 1

69,99 €

JOBELINE

**Chef jacket Luisa**

High quality women's chef jacket in textured fabric with grey piping on collar and turn-up cuff. Concealed snap button placket and thermometer pocket. Straight, slightly tailored cut. Available in three-quarter and long sleeves.

65% polyester, 35% cotton. 215 g/m<sup>2</sup>. 60°C wash.

Back length: 70 cm for size 36.

Color: black/grey, white/grey

34, 36, 38, 40, 42, 44, 46, 48, 50



white/grey

black/grey



white/grey

black/grey

**Women's chef jacket 3/4 sleeve**

3/4 sleeve

124287

Pcs./pack 1

68,99 €

**Women's chef jacket**

long sleeve

101147

Pcs./pack 1

69,99 €



■ Slip on shirt with deep snap button placket for easy on and off



■ Bib apron loop at neck

**NEW**



Apron Melek p. 618

# Breathable LINEN

## JOBELINE

### Chef jacket Jacob

Lightweight, long-sleeved chef jacket for men and women made of robust and breathable cotton linen fabric. Once pre-washed, it gets its distinctive, slightly creased linen look. Straight cut, with stand-up collar, two-piece upper arm pocket on the left and bib apron loop at the neck. Closable with high-quality snap buttons. Embroidery for personalization possible.

45% cotton, 55% linen, 180 g/m<sup>2</sup>. 40°C wash.

Back length women: 71 cm for size 36.

Back length men: 79 cm for size 50.

Color: grey



### Women's chef jacket

34, 36, 38, 40, 42, 44,  
46, 48, 50, 52, 54, 56  
long sleeve

165450  
Pcs./pack 1  
49,99 €



### Men's chef jacket

44, 46, 48, 50, 52, 54,  
56, 58, 60, 62, 64, 66  
long sleeve

165375  
Pcs./pack 1  
49,99 €

**Women's shirt**

34, 36, 38, 40, 42, 44,  
46, 48, 50, 52, 54, 56  
1/2 sleeve

165454  
Pcs./pack 1  
49,99 €

**Men's shirt**

44, 46, 48, 50, 52, 54,  
56, 58, 60, 62, 64, 66  
1/2 sleeve

165452  
Pcs./pack 1  
49,99 €

- Breathable linen-cotton fabric
- Hard-wearing and easy-care
- Casual shirt cut

**JOBELINE  
Shirt Jacob**

Lightweight, short-sleeved shirt for men and women made of robust and breathable cotton linen fabric. Once pre-washed it gets its distinctive, slightly creased linen look. Straight cut, with stand-up collar, 3 patch pockets with snap buttons and bib apron loop at the neck. The deep button placket at the front with high quality snaps makes it easy to put on over the head. Embroidery for personalization possible.

45% cotton, 55% linen, 180 g/m<sup>2</sup>. 40°C wash.

Back length women: 69 cm for size 36.

Back length men: 76 cm for size 50.

Color: grey

# Casual style with **DENIM**

Flat cap Flin p. 681

Chef jacket series  
Levi  
Piece from

**48<sup>99</sup>**

Chef trousers Sweatpant p. 708

Professional shoe Liberty Knit p. 730

Professional shoe Trainer without aluminum cap p. 725



■ 2-divided upper arm pocket



■ Concealed zipper



- Bib apron loop at the neck
- Made of genuine denim for a unique look
- Long sleeve chef jacket with functional roll up sleeve

JOBELINE

**Chef jacket series Levi**

Chef jacket for men and women made of lightweight denim fabric. With zipper, short or long sleeves, stand-up collar, 2-divided upper arm pocket and bib apron loop at the neck. 100% cotton. 212 g/m<sup>2</sup>. 40°C wash. Color: dark blue, black



black



dark blue

**Women's chef jacket**

**1/2 sleeve**

34, 36, 38, 40, 42, 44, 46, 48, 50, 52, 54, 56

1/2 sleeve

126427  
Pcs./pack 1  
48,99 €



dark blue



black

**Men's chef jacket**

**1/2 sleeve**

44, 46, 48, 50, 52, 54, 56, 58, 60, 62, 64, 66

1/2 sleeve

126429  
Pcs./pack 1  
48,99 €



black



dark blue

**Women's chef jacket**

**long sleeve**

34, 36, 38, 40, 42, 44, 46, 48, 50, 52, 54, 56

long sleeve

126428  
Pcs./pack 1  
49,99 €



dark blue



black

**Men's chef jacket**

**long sleeve**

44, 46, 48, 50, 52, 54, 56, 58, 60, 62, 64, 66, 68

long sleeve

126430  
Pcs./pack 1  
49,99 €



OUR  
*tip*

# Casual: DENIM & CHAMBRAY

*With practical snap fastener*

*Bib apron loop  
in the neck*



Men's chef jacket long sleeve Chambray

*Extremely  
hard-wearing*



Women's chef jacket 1/2 sleeve denim

*2-divided upper arm pocket*

JOBELINE

## **Chef jacket Scott**

Stylish chef jacket in half and long sleeve. Closable by snap fasteners. 2-divided sleeve pen pocket on the left as well as bib apron loop in the neck. Available in two materials: genuine denim (color denim light) or chambray (grey).

denim light: 100% cotton (denim). 255 g/m<sup>2</sup>. 40°C wash.

grey: 100% cotton (chambray). 170 g/m<sup>2</sup>. 40°C wash.

Back length women: 68 cm for size 36.

Back length men: 76 cm for size 50.





## DENIM & CHAMBRAY

Often confusingly similar in appearance to the untrained eye, both fabrics are very different in their properties. Genuine denim, woven with a light and an indigo dyed thread, is a very robust, rather firm and durable material. It is characterized by its characteristic wash, which makes each garment unique. Chambray, a lighter yet also sturdy cotton fabric, on the other hand, is rather smooth and soft to touch, as well as thinner and more flowing. Visually, different colored threads are also used, creating the familiar similarity to denim.



### Women's chef jacket 1/2 sleeve denim

Color: denim hell  
34, 36, 38, 40, 42,  
44, 46, 48, 50  
1/2 sleeve

117541  
Pcs./pack 1  
48,99 €



### Women's chef jacket long sleeve denim

Color: denim hell  
34, 36, 38, 40, 42,  
44, 46, 48, 50  
long sleeve

119267  
Pcs./pack 1  
49,99 €



### Men's chef jacket 1/2 sleeve denim

Color: denim hell  
44, 46, 48, 50, 52,  
54, 56, 58, 60  
1/2 sleeve

117542  
Pcs./pack 1  
48,99 €



### Men's chef jacket long sleeve denim

Color: denim hell  
44, 46, 48, 50, 52,  
54, 56, 58, 60  
long sleeve

119418  
Pcs./pack 1  
49,99 €



### Women's chef jacket 1/2 sleeve Chambray

Color: grey  
34, 36, 38, 40, 42,  
44, 46, 48, 50  
1/2 sleeve

125020  
Pcs./pack 1  
48,99 €



### Women's chef jacket long sleeve Chambray

Color: grey  
34, 36, 38, 40, 42,  
44, 46, 48, 50  
long sleeve

125021  
Pcs./pack 1  
49,99 €



### Men's chef jacket 1/2 sleeve Chambray

Color: grey  
44, 46, 48, 50, 52,  
54, 56, 58, 60  
1/2 sleeve

125018  
Pcs./pack 1  
48,99 €



### Men's chef jacket long sleeve Chambray

Color: grey  
44, 46, 48, 50, 52,  
54, 56, 58, 60  
long sleeve

125019  
Pcs./pack 1  
49,99 €





Chef jacket  
Carter  
Piece from  
**43<sup>99</sup>**

**NEW**

**JOBELINE**



**Chef jacket Carter**

Chef jacket for men and women made of extra lightweight and robust fabric. With stand-up collar, breathable mesh inserts on the sides, two-divided upper arm pocket on the left and bib apron loop in the neck. Closes with snaps in a concealed snap placket. Available in short and long sleeves (roll-up sleeves). The women's model is cut waisted. 65% polyester, 35% cotton. 160 g/m<sup>2</sup>. 60°C wash. Back length women: 68 cm for size 36. Back length men: 76 cm for size 50. Color: burgundy, grey, grey-blue, navy, olive, sand, black, white

- Extra lightweight fabric
- With opaque side mesh inserts for optimal ventilation
- Snap closure



grey



grey



grey



grey



sand burgundy black  
white grey-blue olive navy



sand burgundy black  
white grey-blue olive navy



sand burgundy black  
white grey-blue olive navy



sand burgundy black  
white grey-blue olive navy

**Women's chef jacket  
1/2 sleeve**

34, 36, 38, 40, 42, 44, 46, 48, 50, 52, 54, 56  
Pcs./pack 1  
43,99 €

**Women's chef jacket  
long sleeve**

34, 36, 38, 40, 42, 44, 46, 48, 50, 52, 54, 56  
Pcs./pack 1  
44,99 €

**Men's chef jacket  
1/2 sleeve**

44, 46, 48, 50, 52, 54, 56, 58, 60, 62, 64, 66  
Pcs./pack 1  
43,99 €

**Men's chef jacket  
long sleeve**

44, 46, 48, 50, 52, 54, 56, 58, 60, 62, 64, 66  
Pcs./pack 1  
44,99 €

# EXTRA LIGHTWEIGHT

and robust



Chef trousers Sweatpant p. 708

Chef trousers Move p. 709

Professional shoe Trainer without aluminum cap p. 724

Professional shoe Hunter p. 728

Professional shoe Liberty Knit p. 730



■ Long sleeve chef jacket with practical roll-up function



■ Practical bib apron loop in the neck



■ 2-divided upper arm pocket

Chef jacket Yuki  
Piece only

29<sup>99</sup>



**This could be your logo!**  
Info on p. 12



■ Closure for tying



■ 2-divided upper arm pocket

JOBELINE

**Chef jacket Yuki**

Chef jacket with three-quarter sleeves, shawl collar, two-divided upper arm pocket and a front pocket. The chef jacket is tied inside and outside with two ribbons each, so that a fashionable wrap look is created.

65% polyester, 35% cotton. 160 g/m<sup>2</sup>. 60°C wash.

Back length women: 72 cm for size 36.

Back length men: 77 cm for size 50.

Color: grey-blue, black



- Extra lightweight fabric
- With one patch pocket on the hip
- Lightweight chef jacket in kimono style



grey-blue

black

**Women's chef jacket**

34, 36, 38, 40, 42, 44, 46, 48, 50, 52, 54, 56  
3/4 sleeve

126649  
Pcs./pack 1  
29,99 €



grey-blue

black

**Men's chef jacket**

44, 46, 48, 50, 52, 54, 56, 58, 60, 62, 64, 66  
3/4 sleeve

126666  
Pcs./pack 1  
29,99 €



Chef jacket Ailin & Emil

Piece from

28<sup>99</sup>

JOBELINE



**Chef jacket Ailin & Emil**

Women's and men's chef jacket in an easy-care blended quality that quickly wicks moisture to the outside. With practical snap closure and ventilation eyelets under the arm. Available in short and long sleeve.

65% polyester, 35% cotton. 200 g/m<sup>2</sup>. 60°C wash.

Back length women: 73 cm for size 36.

Back length men: 79 cm for size 50.

Color: black, white

- With practical snap fastener
- Available in 2 sleeve lengths
- Easy-iron



black

white

**Women's chef jacket 1/2 sleeve**

34, 36, 38, 40, 42, 44, 46, 48, 50,

52, 54, 56

1/2 sleeve

124283

Pcs./pack 1

28,99 €



black

white

**Women's chef jacket**

34, 36, 38, 40, 42, 44, 46, 48, 50,

52, 54, 56

long sleeve

115418

Pcs./pack 1

29,99 €



black

white

**Men's chef jacket 1/2 sleeve**

44, 46, 48, 50, 52, 54, 56, 58, 60,

62, 64, 66

1/2 sleeve

124291

Pcs./pack 1

28,99 €



black

white

**Men's chef jacket**

44, 46, 48, 50, 52, 54, 56, 58, 60,

62, 64, 66

long sleeve

115420

Pcs./pack 1

29,99 €

Chef jacket  
Pauline & Paolo  
Piece from

**22<sup>99</sup>**

**This  
could  
be your  
logo!**  
Info on p. 12

Ball buttons p. 717

JOBELINE



**Chef jacket Pauline & Paolo**

Women's and men's chef jacket available in short and long sleeve. In an easy-care blended quality with 5-buttonhole shape. Supplied with button placket and ball buttons.

65% polyester, 35% cotton. 200 g/m<sup>2</sup>. 60°C wash.

Back length women: 73 cm for size 36.

Back length men: 79 cm for size 50.

**200 g/m<sup>2</sup>**

- Durable and easy-care material
- Delivery incl. button placket and ball buttons
- Easy-iron



white

mango blackberry dark blue



olive light grey black



blackberry

white mango red bordeaux dark blue



apple green olive taupe light grey grey black



light grey

white mango blackberry



dark blue olive black



olive

white mango red bordeaux blackberry



dark blue apple green taupe light grey grey black

**Women's chef jacket 1/2 sleeve**

Color: blackberry, dark blue, light grey, mango, olive, black, white  
34, 36, 38, 40, 42, 44, 46, 48, 50, 52, 54, 56

102813  
Pcs./pack 1  
22,99 €

**Women's chef jacket long sleeve**

Color: apple green, bordeaux, blackberry, dark blue, grey, light grey, mango, olive, red, black, taupe, white  
34, 36, 38, 40, 42, 44, 46, 48, 50, 52, 54, 56

100866  
Pcs./pack 1  
23,99 €

**Men's chef jacket 1/2 sleeve**

Color: blackberry, dark blue, light grey, mango, olive, black, white  
44, 46, 48, 50, 52, 54, 56, 58, 60, 62, 64, 66

102379  
Pcs./pack 1  
22,99 €

**Men's chef jacket long sleeve**

Color: apple green, bordeaux, blackberry, dark blue, grey, light grey, mango, olive, red, black, taupe, white  
44, 46, 48, 50, 52, 54, 56, 58, 60, 62, 64, 66

100799  
Pcs./pack 1  
23,99 €

Chef jacket Milan  
Piece from

27<sup>99</sup>

NEW

CHEF CLOTHING



JOBELINE

60

**Chef jacket Milan**

Chef jacket for men and women made of a lightweight polyester-cotton blended fabric. With 2-divided upper arm pocket. Includes 5-buttonhole placket and ball buttons in the same color as the chef jacket. Easy-care and easy-iron. Choose between several sleeve styles: long or short sleeve on men's jacket, long, three-quarter or short sleeve on women's model. 65% polyester, 35% cotton. 160 g/m<sup>2</sup>. 60°C wash. Back length women: 73 cm for size 36. Back length men: 78 cm for size 50. Color: blackberry, grey, navy, black, taupe, white

160 g/m<sup>2</sup>

- Extra lightweight, durable fabric
- With 2-divided upper arm pocket
- Delivery incl. button placket and ball buttons



navy



blackberry



taupe



black



grey



white blackberry

taupe grey black



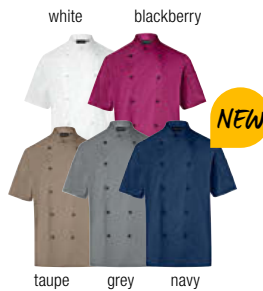
white taupe

black grey navy



white blackberry

black grey navy



white blackberry

taupe grey navy



white blackberry

taupe black navy

**Women's chef jacket  
1/2 sleeve**

34, 36, 38, 40, 42, 44,  
46, 48, 50, 52, 54, 56  
1/2 sleeve

120166  
Pcs./pack 1  
27,99 €

**Women's chef jacket  
3/4 sleeve**

34, 36, 38, 40, 42, 44,  
46, 48, 50, 52, 54, 56  
3/4 sleeve

120165  
Pcs./pack 1  
28,99 €

**Women's chef jacket  
long sleeve**

34, 36, 38, 40, 42, 44, 46, 48,  
50, 52, 54, 56  
long sleeve

120167  
Pcs./pack 1  
29,99 €

**Men's chef jacket  
1/2 sleeve**

44, 46, 48, 50, 52, 54,  
56, 58, 60, 62, 64, 66  
1/2 sleeve

120171  
Pcs./pack 1  
27,99 €

**Men's chef jacket  
long sleeve**

44, 46, 48, 50, 52, 54,  
56, 58, 60, 62, 64, 66  
long sleeve

120172  
Pcs./pack 1  
29,99 €



# FITTING

*Fits perfectly*

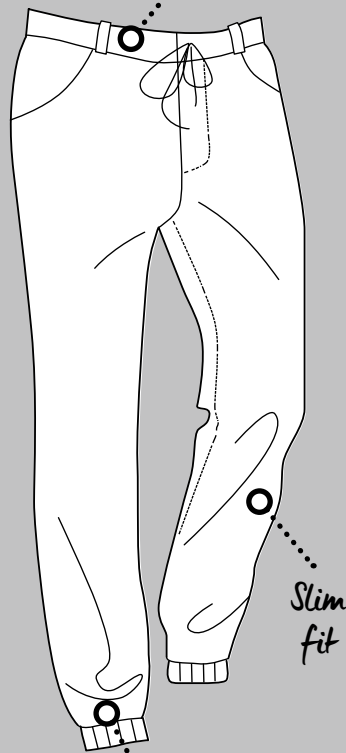
## Find your perfect chef trousers!

A pair of chef trousers must be one thing above all: comfortable. Because only if nothing pinches, you can fully concentrate on your work. The most important thing is the fit of the trousers. What kind of waistband does it have? Are the legs cut rather wide or narrow? And how do the legs taper at the bottom? Whether sweatpant fit, slim fit or regular fit: choose the trousers that suit you best. So that nothing distracts you from cooking ...

You can identify your matching chef trousers by the following symbols at the order scheme:

- SWEAT PANT**
- SLIM TAPERED**
- SLIM**
- COMFORT**
- REGULAR**

*With comfortable stretch waistband in the back and drawstring*



*Slim tapered with elastic cuffs*

**SWEATPANT FIT** **SWEAT PANT**

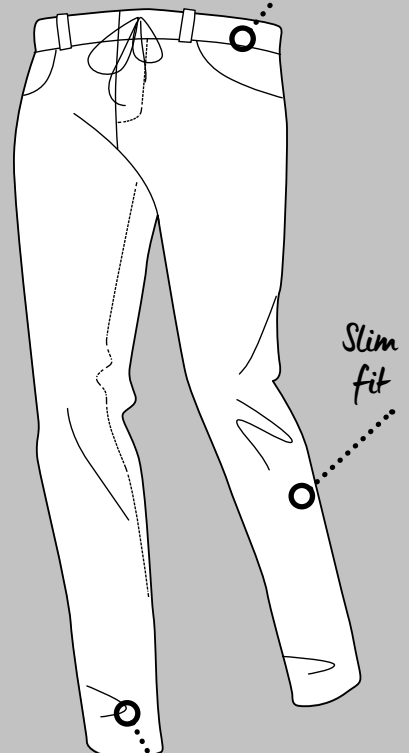
### Women styles

- Women's chef trousers Sweatpant ..... 708
- Women's chef trousers Sweatpant check 708

### Men styles

- Men's chef trousers Sweatpant ..... 708
- Men's chef trousers Sweatpant check . 708

*With comfortable stretch waistband in the back and drawstring*



*Slim tapered leg*

**SLIM TAPERED** **SLIM TAPERED**

### Women styles

- Women's chef trousers Move ..... 709
- Women's chef trousers Move check .... 709

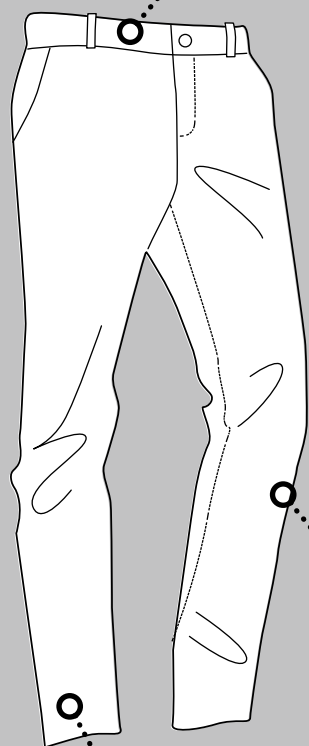
### Men styles

- Men's chef trousers Move ..... 709
- Men's chef trousers Move check ..... 709

# GUIDE

## Chef trousers

*With comfortable stretch waistband in the back*



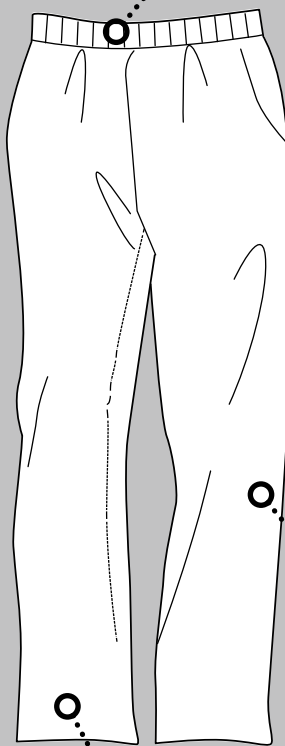
*Slim to straight fit*

*Straight, slim leg course*

**SLIM FIT**

SLIM

*With comfortable all-around elastic waistband*



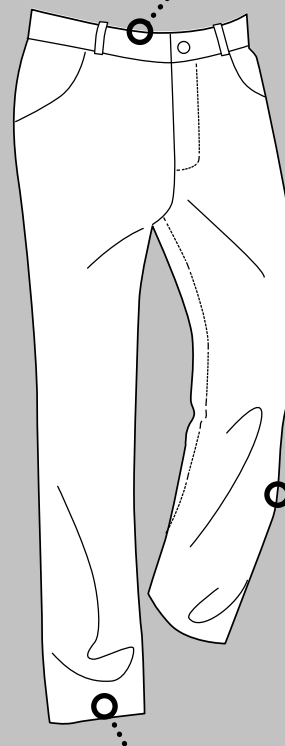
*Wide fit*

*Wide leg course*

**COMFORT FIT**

COMFORT

*With classic waistband*



*Straight fit*

*Straight leg course*

**REGULAR FIT**

REGULAR

### Women styles

- Women's chef trousers Severin ..... 710
- Women's chef trousers Avito ..... 711

### Men styles

- Men's chef trousers Severin ..... 710
- Men's chef trousers Avito ..... 711

### Women styles

- Women's chef trousers Nathan ..... 712
- Women's chef trousers Loreen ..... 713
- Women's chef trousers Liam ..... 713

### Men styles

- Men's chef trousers Nathan ..... 712
- Men's chef trousers Nick ..... 712
- Men's chef trousers Liam ..... 713

### Women styles

- Women's chef trousers Cosma ..... 714

### Men styles

- Men's chef trousers Colin ..... 714
- Men's chef trousers Francis ..... 714

- 2 side pockets
- Fashionable glencheck pattern
- Elastic cuffs on the trouser leg
- Comfortable stretch waistband in the back and drawstring in the front



Professional shoe Hunter p. 728



Chef trousers  
Sweatpant  
Piece only

44<sup>99</sup>

Professional shoe Liberty Knit p. 730

  
WERIN®  
TEC LIGHT  
[WWW.WERIN-TEC.COM](http://WWW.WERIN-TEC.COM)  
Info on p. 691

JOBELINE

**Chef trousers Sweatpant**

Chef trousers with comfortable stretch waistband and with drawstring to adjust the waist size.

2 back pockets, 2 side pockets, belt loops and elastic cuffs at the bottom of the trouser legs. The black trousers are made of breathable WERIN® TEC Light functional material. The plaid trousers are made of pleasantly lightweight fabric with fashionable glencheck design.

black: 58% cotton, 42% polyester.

plaid: 65% polyester, 35% cotton.

180 g/m<sup>2</sup>. 60°C wash.

Inseam length women: 75 cm for size 36.

Inseam length men: 77 cm for size 50.



- Comfortable stretch waistband in the back and 2 back pockets

# SWEATPANT FIT



**Women's chef trousers**

Color: black

34, 36, 38, 40, 42, 44, 46, 48, 50, 52, 54, 56

126645  
Pcs./pack 1  
44,99 €



**Women's chef trousers check**

Color: anthracite

34, 36, 38, 40, 42, 44, 46, 48, 50, 52, 54, 56

126647  
Pcs./pack 1  
44,99 €



**Men's chef trousers**

Color: black

44, 46, 48, 50, 52, 54, 56, 58, 60, 62, 64, 66

126661  
Pcs./pack 1  
44,99 €



**Men's chef trousers check**

Color: anthracite

44, 46, 48, 50, 52, 54, 56, 58, 60, 62, 64, 66

126663  
Pcs./pack 1  
44,99 €



- 2 side pockets
- Fashionable glencheck pattern
- Slim tapered trouser leg
- Comfortable stretch waistband in the back and drawstring in the front

Chef trousers  
Move  
Piece only  
**44<sup>99</sup>**

Professional shoe Breeze p. 731

  
WERIN®  
TEC LIGHT  
WWW.WERIN-TEC.COM  
Info on p. 691

Professional shoe Performance p. 727

JOBELINE

**Chef trousers Move**

Chef trousers with comfortable stretch waistband and with drawstring to adjust the waist size. 2 back pockets with buttons, 2 side pockets and belt loops. The black trousers are made of breathable WERIN® TEC Light functional material. The plaid trousers are made of pleasantly lightweight fabric with fashionable glencheck design.

black: 58% cotton, 42% polyester.

plaid: 65% polyester, 35% cotton.

180 g/m². 60°C wash

Inseam length women: 78 cm for size 36.

Inseam length men: 81 cm for size 50.

 SLIM TAPERED

# SLIM TAPERED



■ Comfortable stretch waistband in the back and back pockets with buttons



**Women's chef trousers**  
Color: black  
34, 36, 38, 40, 42, 44, 46, 48, 50, 52, 54, 56  
124909  
Pcs./pack 1  
44,99 €



**Women's chef trousers check**  
Color: anthracite  
34, 36, 38, 40, 42, 44, 46, 48, 50, 52, 54, 56  
126643  
Pcs./pack 1  
44,99 €



**Men's chef trousers**  
Color: black  
44, 46, 48, 50, 52, 54, 56, 58, 60, 62, 64, 66  
124913  
Pcs./pack 1  
44,99 €



**Men's chef trousers check**  
Color: anthracite  
44, 46, 48, 50, 52, 54, 56, 58, 60, 62, 64, 66  
126659  
Pcs./pack 1  
44,99 €

Chef trousers Severin  
Piece only

49<sup>99</sup>



WERIN®  
TEC LIGHT  
WWW.WERIN-TEC.COM  
Info on p. 691



Professional shoe Hunter p. 728



WERIN®  
TEC LIGHT  
WWW.WERIN-TEC.COM  
Info on p. 691



Professional shoe Breeze p. 731

# SLIM FIT 180 g/m<sup>2</sup>

JOBELINE

## Chef trousers Severin

Black chef trousers for men and women in cargo style with straight leg. The lightweight, pleasant cotton-polyester blend fabric guarantees comfortable wear even in hot temperatures. On the right thigh is a thermometer pocket and a loop for pens & co. With two more loops for tea towel or kitchen utensils, belt loops and a comfortable stretch waistband in the back. 5-pocket style (two side pockets, another small pocket on the right, two pockets on the back).

58% cotton, 42% polyester. 180 g/m<sup>2</sup>. 60°C wash.

Inseam length women: 78 cm for size 36.

Inseam length men: 80 cm for size 50.

Color: black



- With stretch content for optimal freedom of movement
- With patch cargo pocket on the leg
- 2 side pockets



■ Comfortable stretch waistband in the back

### Women's chef trousers

34, 36, 38, 40, 42,  
44, 46, 48, 50, 52,  
54, 56

127405  
Pcs./pack 1  
49,99 €



### Men's chef trousers

44, 46, 48, 50, 52,  
54, 56, 58, 60, 62,  
64, 66

127406  
Pcs./pack 1  
49,99 €





Chef trousers Avito

Piece only

44<sup>99</sup>

CHEF CLOTHING

# SLIM FIT 240 g/m<sup>2</sup>

JOBELINE

## Chef trousers Avito

Modern and durable chef trousers for men and women in cargo style and with comfortable stretch waistband in the back. With a cargo patch pocket on the right thigh, 2 side slit pockets and a back piping pocket. With practical belt loops and slightly tapered trouser leg.

65% polyester, 35% cotton. 240 g/m<sup>2</sup>. 60°C wash.

Inseam length women: 78 cm for size 36.

Inseam length men: 80 cm for size 50.

Color: black



SLIM

- With patch cargo pocket and 2 side pockets
- Extremely durable material



- Comfortable stretch waistband in the back and back pocket

### Women's chef trousers

34, 36, 38, 40, 42,  
44, 46, 48, 50, 52,  
54, 56

117518  
Pcs./pack 1  
44,99 €



### Men's chef trousers

44, 46, 48, 50, 52,  
54, 56, 58, 60, 62,  
64, 66

117519  
Pcs./pack 1  
44,99 €





Professional shoe Performance p. 727



Professional shoe Slip On p. 729

# COMFORT FIT

JOBELINE



COMFORT

## Men's chef trousers Nathan

Elastic waistband trousers in pepita with drawstring inside, 2 side slit pockets and 2 patch back pockets with velcro inside.  
100% cotton. 240 g/m<sup>2</sup>. 60°C wash. Inseam length: 84 cm for size 50.  
Color: pepita  
44, 46, 48, 50, 52, 54, 56, 58, 60, 62, 64, 66



115409  
Pcs./pack 1  
24,99 €

JOBELINE



COMFORT

## Women's chef trousers Nathan

Elastic waistband trousers in pepita with drawstring inside, 2 side slit pockets and 2 patch back pockets with velcro inside.  
100% cotton. 240 g/m<sup>2</sup>. 60°C wash. Inseam length: 80 cm for size 36.  
Color: pepita  
34, 36, 38, 40, 42, 44, 46, 48, 50, 52, 54, 56



120197  
Pcs./pack 1  
24,99 €

JOBELINE



COMFORT

## Men's chef trousers Nick

Striped men's chef trousers with elastic waistband and drawstring inside, 2 side pockets and 2 back patch pockets with velcro inside.  
100% cotton. 245 g/m<sup>2</sup>. 60°C wash. Inseam length: 84 cm for size 50.  
Color: black/white  
44, 46, 48, 50, 52, 54, 56, 58, 60, 62, 64, 66



100710  
Pcs./pack 1  
29,99 €



Comfortable all around elastic waistband



Classic pepita pattern



2 back pockets with velcro closure



Professional shoe Breeze p. 731



Professional shoe Breeze p. 731



# COMFORT FIT

JOBELINE



COMFORT

## Women's chef trousers Loreen

Striped women's chef trousers in straight shape with all around elastic waistband, 2 side pockets and 2 patch back pockets with inside velcro closure.

100% cotton. 235 g/m<sup>2</sup>. 60°C wash. Inseam length: 80 cm for size 36. Color: black/white  
34, 36, 38, 40, 42, 44, 46, 48, 50, 52, 54, 56



100926  
Pcs./pack 1  
29,99 €

JOBELINE



COMFORT

## Men's chef trousers Liam

Elastic waistband trousers in uni with drawstring inside, 2 side slit pockets and 2 patch back pockets with velcro inside.

65% polyester, 35% cotton. 240 g/m<sup>2</sup>. 60°C wash. Inseam length: 84 cm for size 50. Color: black, white  
44, 46, 48, 50, 52, 54, 56, 58, 60, 62, 64, 66



100944  
Pcs./pack 1  
26,99 €

JOBELINE



COMFORT

## Women's chef trousers Liam

Elastic waistband trousers in plain with drawstring inside, 2 side slit pockets and 2 patch back pockets with velcro inside.

65% polyester, 35% cotton. 240 g/m<sup>2</sup>. 60°C wash. Inseam length: 80 cm for size 36. Color: black, white  
34, 36, 38, 40, 42, 44, 46, 48, 50, 52, 54, 56



126809  
Pcs./pack 1  
26,99 €



■ 2 side slit pockets and back pockets



■ 2 back pockets with velcro closure



■ Side pockets and all around elastic waistband





Professional shoe Performance p. 727



Professional shoe Breeze p. 731

- Extra lightweight, quick-drying material
- High comfort thanks to stretch content and breathable

# REGULAR FIT

JOBELINE



REGU  
LAR

## Men's chef trousers Colin

Men's chef trousers made of easy-care, durable blended fabric with contrast piping, 2 patch pockets, back pocket and side pocket with snap closure.

65% polyester, 35% cotton.

245 g/m<sup>2</sup>.

60°C wash.

Inseam length:

80 cm for size 50.

Color: black/grey,

black/red,

black/white

44, 46, 48, 50, 52,

54, 56, 58, 60



100864

Pcs./pack 1

32,99 €

JOBELINE



REGU  
LAR

## Men's chef trousers Francis

Men's chef trousers made of easy-care, durable blended fabric with straight cut, 2 patch pockets, back and side pocket with snap closure.

65% polyester, 35% cotton. 245 g/m<sup>2</sup>.

60°C wash.

Inseam length: 80 cm for size 50.

Color: black

44, 46, 48, 50, 52, 54, 56, 58, 60, 62,

64, 66



101211

Pcs./pack 1

32,99 €

JOBELINE



REGU  
LAR

## Women's chef trousers Cosma

Functional women's chef trousers made of high quality and easy-care fabric. With concealed mesh inserts on the legs and over the buttocks, for optimal ventilation. Side pockets and belt loops. Adjustable waist size by incorporated elastic cord with cord stopper.

58% cotton 42% polyester. 180 g/m<sup>2</sup>. 60°C wash.

Inseam length: 80 cm for size 36.

Color: black

34, 36, 38, 40, 42, 44, 46, 48, 50, 52,

54, 56



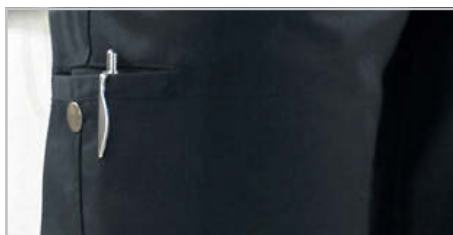
165869

Pcs./pack 1

49,99 €



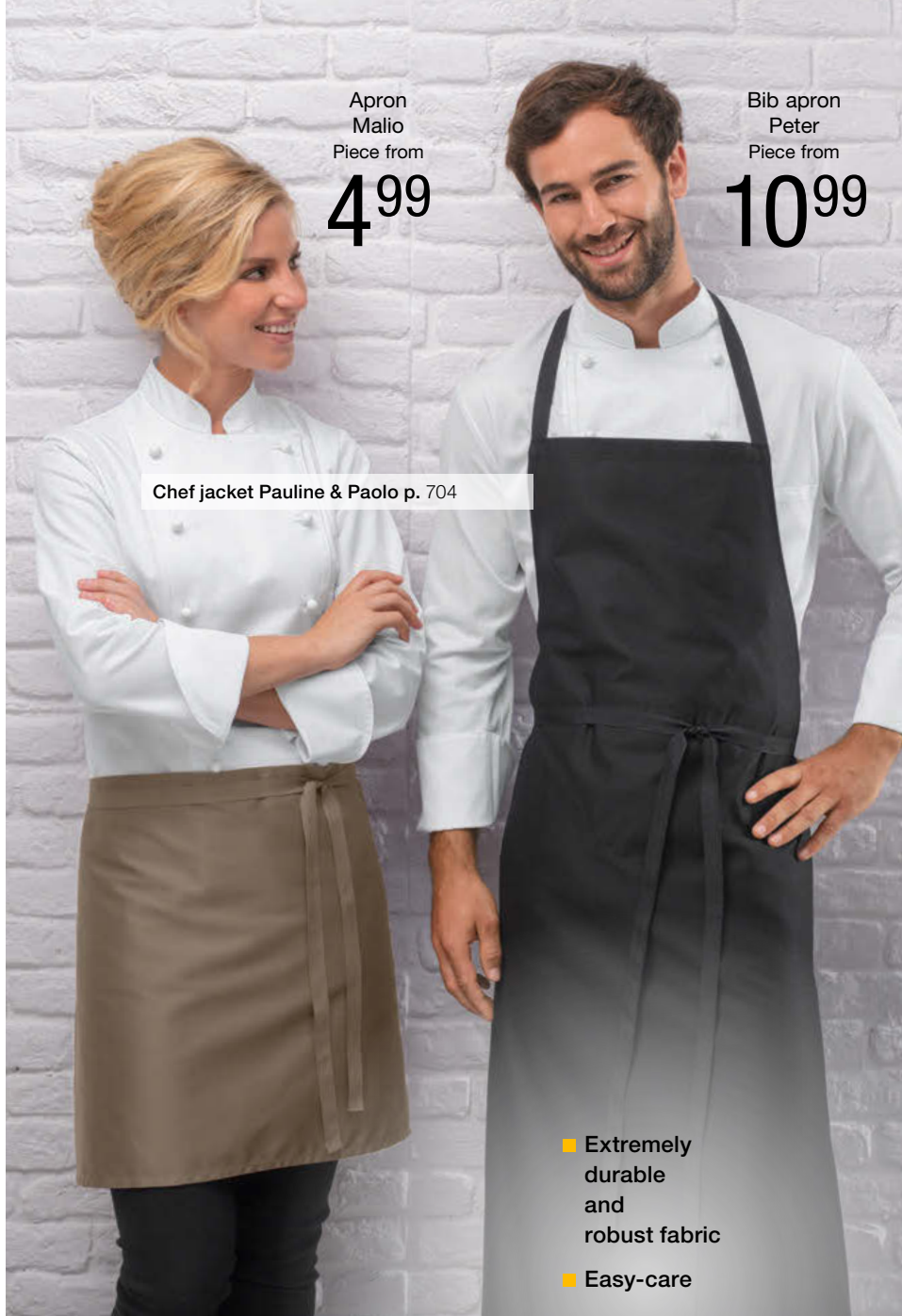
- Back pockets with snap button and contrast piping on the side



- Inside cargo pocket with snap button



- With concealed mesh inserts and adjustable waistband with elastic cord



Apron  
Malio  
Piece from  
**4<sup>99</sup>**

Bib apron  
Peter  
Piece from  
**10<sup>99</sup>**

Chef jacket Pauline & Paolo p. 704

- Extremely durable and robust fabric
- Easy-care



Shirt Charly p. 716

Bib apron Bodo  
Piece only  
**14<sup>99</sup>**

CHEF CLOTHING

JOBELINE

**Apron Malio**

High quality apron made of sturdy and non-iron blended fabric, with fixed fabric straps in a pack of 3.

65% polyester, 35% cotton. 60°C wash.

Color: bordeaux, red, black, taupe, white

Unisex



white red bordeaux black

- Practical pack of 3
- In 5 classic lengths and colors



taupe

Apron 45x80 cm	Apron 60x80 cm	Apron 85x100 cm	Apron 95x100 cm	Apron 95x120 cm
120074	120075	120072	120073	118865
Pcs./pack 3	Pcs./pack 3	Pcs./pack 3	Pcs./pack 3	Pcs./pack 3
Pack 14,97 €	Pack 16,47 €	Pack 17,97 €	Pack 19,47 €	Pack 20,97 €
4,99 €	5,49 €	5,99 €	6,49 €	6,99 €



JOBELINE

**Bib apron Peter**

Bib apron made of cotton twill.

white: 100% cotton. 95°C wash.

black: 100% cotton. 60°C wash.

Color: black, white

Unisex



Bib apron 110x80 cm	Bib apron 110x100 cm
100435	127510
Pcs./pack 1	Pcs./pack 1
10,99 €	11,99 €



JOBELINE

**Bib apron Bodo**

Washable bib apron with corded straps and adjustable neck strap. The mesh lining on the inside makes it comfortable to wear. Available in black or white.

100% PVC. Hand wash.

Color: black, white

110x80 cm (LxW)

Unisex



120186  
Pcs./pack 1  
14,99 €

- Non-textile apron, easily wipeable
- Adjustable neckband

Shirt Charly  
Piece only

10<sup>99</sup>



Apron Bristol p. 614

Flat cap Flin p. 681

Bib apron  
Natural Born Griller  
Piece only

16<sup>99</sup>



black

white

JOBELINE  
**Shirt Charly**

T-shirts in basic shape for women and men.  
100% cotton. 40°C wash.  
Back length: 62 cm for size M.  
Color: black, white  
Unisex  
S, M, L, XL, 2XL, 3XL, 4XL  
1/2 sleeve



100612  
Pcs./pack 1  
10,99 €

- Crossed straps in the back relieve the neck
- Large practical pockets and tea towel loop

JOBELINE



**Bib apron Natural Born Griller**

Black bib apron with print "Natural Born Griller".  
Two front patch pockets, pen pocket and tea towel loop. With crossed back straps for neck relief. To enjoy the print for a long time, iron the bib apron from the inside.  
65% polyester, 35% cotton. 60°C wash.  
Color: black  
88x80 cm (LxW)  
Unisex

126676  
Pcs./pack 1  
16,99 €



# BUTTON THING

Ideal for your individual appearance

Ball buttons

Piece from

0,49

CHEF CLOTHING



## JOBELINE

### Ball buttons

Suitable for all chef jackets in our range.  
You get the ball buttons each in a pack of 12.



### Ball buttons plain

Color: apple green, blue, bordeaux, blackberry, coca brown, dark blue, yellow, graphite, grey, green, light grey, mango, moss green, navy, olive, orange, plum, pink, smoky blue, rust-brown, red, black, taupe, turquoise, white

100972

Pcs./pack 12

Pack 5,88 €

0,49 €



### Ball buttons plain glossy

Color: gold, silver

127368

Pcs./pack 12

Pack 8,28 €

0,69 €



### Ball buttons football

Color: black/white

101099

Pcs./pack 12

Pack 8,28 €

0,69 €



### Ball buttons skull

Color: black

101269

Pcs./pack 12

Pack 8,28 €

0,69 €



### Ball buttons Italy

Color: multicolored

101098

Pcs./pack 12

Pack 8,28 €

0,69 €

# ACCESSORIES



Steward cap  
Willy  
Piece only  
**6<sup>99</sup>**

## JOBELINE Steward cap Willy

Durable steward cap with velcro closure for size adjustment. white: 100% cotton. 95°C wash. black: 65% polyester, 35% cotton. 60°C wash.



black

white

### Steward cap blended fabric

Color: black

118747  
Pcs./pack 1  
6,99 €

### Steward cap cotton

Color: white

100250  
Pcs./pack 1  
6,99 €

## JOBELINE Chef hat Franz

Durable chef hat with individual size adjustment by velcro. 65% polyester, 35% cotton. 60°C wash. Color: black, white



black

white

### Chef hat Franz

Piece only

**9<sup>99</sup>**

## JOBELINE Cap Scull

Cap with airy mesh insert and velcro closure for individual size adjustment. 65% polyester, 35% cotton. 60°C wash. Color: bordeaux, graphite, grey, black, taupe, white

Cap  
Scull  
Piece only  
**6<sup>99</sup>**



black



white

bordeaux

taupe

grey

graphite

115877  
Pcs./pack 1  
6,99 €

## JOBELINE Baseball cap Jack

Baseball cap in different colors. Size adjustment possible. 100% cotton. Hand wash. Color: bordeaux, navy, red, black, white



black



white

red

bordeaux

navy

100713  
Pcs./pack 1  
6,99 €

### Baseball cap Jack

Piece only

**6<sup>99</sup>**



JOBELINE  
**Hair band Curly**  
 Jersey hair band with comfortable elastic. 65% polyester, 35% cotton. 30°C gentle wash.  
 Color: black

Hair band  
 Curly  
 Piece only  
**6<sup>99</sup>**



black

117553  
 Pcs./pack 1  
 6,99 €

JOBELINE  
**Headscarf Bandana**  
 Headgear with straps to tie for universal adjustment of the width. 100% cotton. 60°C wash.  
 Color: apple green, bordeaux, blackberry, coca brown, graphite, grey, mango, red, black, taupe, white

100925  
 Pcs./pack 1  
 6,99 €



black



JOBELINE  
**Cap Cuba**  
 Cap in different colors. Size adjustable via a bar at the back of the cap. 65% polyester, 35% cotton. 30°C gentle wash.  
 Color: olive, black

Cap Cuba  
 Piece only  
**11<sup>99</sup>**



olive

black

126635  
 Pcs./pack 1  
 11,99 €



Professional shoe Explorer Light p. 722

## WATER-REPELLENT SUEDE

The suede shoe Trainer offers optimal foot climate and great comfort. It is also water-repellent and slip-resistant. Available as professional shoe or safety shoe with aluminum cap.

p. 724



Professional shoe Trainer without aluminum cap p. 724

# PROFES- SIONAL SHOES

Comfort and safety are important characteristics for professional shoes. With our tested shoes in professional quality you are well on your feet everywhere - whether in kitchen, hotel business or care.



LIGHTWEIGHT  
 AND  
*fashionable*

Just 330 grams weighs the shoe Explorer Light in size 41. With the non-slip sole you always remain stable. The fashionable shoe is also a cool companion in your free time. In black also available with waterproof membrane.



JOBELINE  
 Professional shoe  
 Slip On  
 30052273  
 79,99 €  
 p. 729



JOBELINE  
 Professional shoe  
 Performance  
 without aluminum cap  
 30052185  
 74,99 €  
 p. 727





# EXPLORER LIGHT

in four colors ...

Professional shoe  
Explorer Light  
Pair only

69<sup>99</sup>



## JOBELINE

### Professional shoe Explorer Light

The perfect professional shoe: lightweight and breathable sneaker for men and women. Thanks to specially developed lasts, the JL sneaker sits perfectly on the foot and thus ensures maximum comfort throughout the day. The particularly low weight of the shoe of 330 g prevents fatigue in everyday life. The breathable mesh ensures freshness on the foot. Soft, seamless tape reinforces the entire shoe and the toe cap. Easy on and off thanks to elastic laces. The shoe's responsive cushioning takes the strain off your knees, back and spine. The removable insole also provides optimal midfoot support. The slip-resistant rubber outsole complies with the SRC standard. It provides optimum traction on wet and slippery floors, is antistatic and resistant to oils and greases. Delivery includes shoehorn, shoe bag, sole cleaner and additional pair of laces.

Color: anthracite, olive, black, white

01

- Highly breathable
- SRC-certified outsole according to EN ISO 20347:2012
- Shock absorbing for optimal protection of knee, back and spine

#### Professional shoe

##### Women

36, 37, 38, 39, 40

165616

Pcs./pack 1

69,99 €

#### Professional shoe

##### Men

41, 42, 43, 44, 45, 46, 47, 48

165614

Pcs./pack 1

69,99 €



olive



white



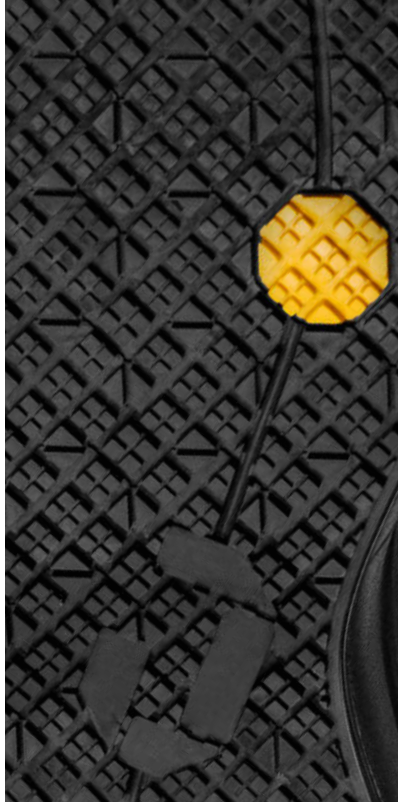
black



anthracite



NEW



■ With practical speed lacing

PROFESSIONAL SHOES



... or with  
**MEMBRANE**

■ Breathable mesh with waterproof membrane at the same time

JOBELINE

### Professional shoe Explorer

The perfect professional shoe: lightweight and breathable sneaker for men and women with waterproof membrane. Thanks to specially developed lasts, the JL sneaker sits perfectly on the foot and thus ensures maximum comfort throughout the day. The particularly low weight of the shoe of 330 g prevents fatigue in everyday life. At the same time, the mesh with its breathable and at the same time waterproof membrane ensures dry feet. Soft, seamless tape reinforces the entire shoe and the toe cap. Easy to put on and take off thanks to elastic laces. With the responsive cushioning of the shoe, knees, back and spine are relieved. The removable insole also provides optimal midfoot support. The slip-resistant rubber outsole complies with the SRC standard. It provides optimum traction on wet and slippery floors, is antistatic and resistant to oils and greases. Delivery includes shoehorn, shoe bag, sole cleaner and additional pair of laces. Color: black

**Professional shoe Women**  
36, 37, 38, 39, 40  
165620  
Pcs./pack 1  
79,99 €

**Professional shoe Men**  
41, 42, 43, 44, 45, 46, 47, 48  
165618  
Pcs./pack 1  
79,99 €

02



NEW

Professional shoe Explorer  
Pair only

**79<sup>99</sup>**



- Antistatic
- Water-repellent
- Slip-resistant according to SRC certification
- With and without aluminum cap



So that you are optimally protected: The SRC-certified sole is slip-resistant and resistant to oils and greases.





Professional shoe  
Trainer  
Pair from

**79<sup>99</sup>**

JOBELINE

#### Safety shoe Trainer Pro with aluminum cap

Black suede safety shoe for men and women. With aluminum safety caps according to EN ISO 20345:2011 standard. 100% leather upper, 100% goatskin lining. Water-repellent, with leather lining for optimal foot climate and removable, washable OrthoLite® insole for optimal arch support. The slip-resistant Eva sole with rubber outsole complies with the SRC standard. It provides optimal traction on wet and slippery floors, has an antistatic effect and is resistant to oils and greases. Delivery includes shoehorn, shoe bag and additional pair of laces in black.

Upper material and inner lining: leather.

Color: black

Unisex

36, 37, 38, 39, 40, 41, 42, 43, 44, 45, 46, 47

127187

Pcs./pack 1

84,99 €



02

JOBELINE

#### Professional shoe Trainer without aluminum cap

Black suede professional shoe for men and women. Complies with EN ISO 20347:2012 standard. 100% leather upper, 100% goatskin lining. Water-repellent, with leather lining for optimal foot climate and removable, washable OrthoLite® insole for optimal arch support. The slip-resistant Eva sole with rubber outsole complies with the SRC standard. It provides optimal traction on wet and slippery floors, has an antistatic effect and is resistant to oils and greases. Delivery incl. shoehorn, shoe bag and additional pair of laces in black.

Upper material and inner lining: leather.

Color: black

Unisex

36, 37, 38, 39, 40, 41, 42, 43, 44, 45, 46, 47

127186

Pcs./pack 1

79,99 €



02



Professional shoe  
Performance  
Pair from

**74<sup>99</sup>**

- With leather lining
- OrthoLite® inner sole
- Slip-resistant due to SRC-certified rubber sole



# Fitter than a SNEAKER



02

## JOBELINE

### Safety shoe Performance Pro with aluminum cap

Black leather safety shoe for men and women. With aluminum safety caps according to EN ISO 20345:2011 standard. 100% leather upper, 100% goatskin lining. Water-repellent, with reflective laces and leather lining for optimal foot climate. Removable, washable OrthoLite® insole for optimal arch support. The slip-resistant rubber sole with Eva core for greater comfort complies with the SRC standard. It provides optimal traction on wet and slippery floors, has an antistatic effect and is resistant to oils and greases. Delivery incl. shoehorn, shoe bag, sole cleaner and additional pair of laces in black.

Upper material and inner lining: leather.  
Color: black  
36, 37, 38, 39, 40, 41, 42, 43, 44, 45, 46, 47

127181  
Pcs./pack 1  
79,99 €

02

## JOBELINE

### Professional shoe Performance without aluminum cap

Professional leather shoe for men and women with the look of a classic sneaker. Complies with EN ISO 20347:2012 standard. 100% leather upper, 100% goatskin lining. Water-repellent, with reflective laces and leather lining for optimal foot climate. Removable, washable OrthoLite® insole for optimal arch support. The slip-resistant rubber sole with Eva core for greater comfort complies with the SRC standard. It provides optimal traction on wet and slippery floors, is antistatic and resistant to oils and greases. Available in black or white. Delivery incl. shoehorn, shoe bag, sole cleaner and additional pair of laces in black or white.

Upper material and inner lining: leather.  
Color: black, white  
36, 37, 38, 39, 40, 41, 42, 43, 44, 45, 46, 47

127180  
Pcs./pack 1  
74,99 €



When it has to be particularly safe: The black model is also available with aluminum safety cap.



Professional shoe  
Hunter  
Pair only

**89<sup>99</sup>**



When it has to go fast again:  
Hooks make it easier to put on and take off.



**02**

**JOBELINE**

**Professional shoe Hunter**

Black leather ankle high professional shoe for men and women. Complies with EN ISO 20347:2012 standard. 100% leather upper, 100% goatskin lining. Water-repellent, with reflective laces, removable OrthoLite® anatomical footbed and leather lining for optimal foot climate. Lacing via eyelets and two hooks to quickly put on and take off the shoes. The slip-resistant rubber sole with Eva core for more comfort complies with the SRC standard. It provides optimum traction on wet and slippery floors, has an antistatic effect and is resistant to oils and greases. Delivery includes shoehorn, shoe cleaner, shoe bag and additional pair of laces in black.

Upper material and inner lining: leather.

Color: black

Unisex

36, 37, 38, 39, 40, 41, 42, 43, 44, 45, 46, 47

127177

Pcs./pack 1

89,99 €





Professional shoe  
Slip On  
Pair only

79<sup>99</sup>



So that you go safely: The high slip-resistant sole is certified according to SRC and EN ISO 20347:2012 standard.



02



SRC-certified rubber sole

OrthoLite® Eco insole

Easy entry due to internal elastic straps

Antistatic

JOBELINE

**Professional shoe Slip On**

Black leather professional shoe for men and women. Complies with EN ISO 20347:2012 standard. 100% leather upper, 100% goatskin lining. Easy to slip in and out thanks to internal elastic straps. Water-repellent, with removable, washable OrthoLite® insole for optimal arch support and leather lining for optimal foot climate. The slip-resistant rubber sole with Eva core for more comfort complies with the SRC standard. It provides optimal traction on wet and slippery floors, has an antistatic effect and is resistant to oils and greases. Delivery incl. shoehorn, sole cleaner and shoe bag.

Upper material and inner lining: leather.

Color: black

Unisex

36, 37, 38, 39, 40, 41, 42, 43, 44, 45, 46, 47

127185  
Pcs./pack 1  
79,99 €

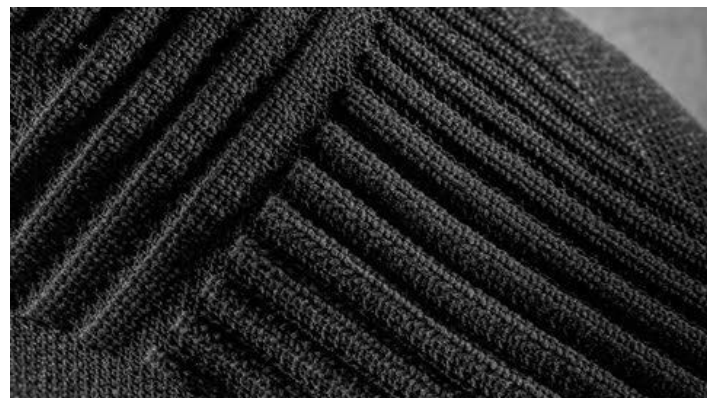




Professional shoe  
Liberty Knit  
Pair only

59<sup>99</sup>

- Perfect fit thanks to cuddly, dimensionally stable knitwear
- SRC-certified sole
- Loop for uncomplicated, quick slip-on



01

JOBELINE

**Professional shoe Liberty Knit**

Fashionable professional shoe made of solid knit for men and women. Complies with EN ISO 20347:2012 standard. 100% polyester upper, 100% polyester lining. With loop on the heel for easy slip-on. The removable insole has an anatomical footbed. So it provides foot support at the arch, shock absorption at the heel and forefoot and offers a massage effect in the forefoot. The slip-resistant Eva sole with rubber outsole complies with the SRC standard. It provides optimal traction on wet and slippery floors, has an antistatic effect and is resistant to oils and greases. The shoe fits the foot perfectly, is very comfortable and super lightweight: just slip in and go! Delivery includes shoe bag and shoehorn.

Upper material and inner lining: 100% polyester. Sole: 85% Eva plastic, 15% rubber.

Color: black

36, 37, 38, 39, 40, 41, 42, 43, 44, 45, 46, 47, 48

127178  
Pcs./pack 1  
59,99 €



So that you are always comfortable: Liberty Knit fits like a sock while providing stable support.



Professional shoe  
Breeze  
Pair only

59<sup>99</sup>

# Airy, lightweight & SUPER SAFE

- Antistatic
- Shock absorbing outsole
- Breathable Coolmax® lining



anthracite



navy



black

01

JOBELINE

### Professional shoe Breeze

Fashionable professional shoe in sneaker style for men and women. Complies with EN ISO 20347:2012 standard. Upper: easy-care synthetic fiber, lining: breathable and moisture-wicking Coolmax® lining. The removable insole has an anatomical footbed. Thus, it provides foot support at the arch, shock absorption at the heel and forefoot, and offers a massage effect in the forefoot. The slip-resistant Eva sole with rubber outsole complies with the SRC standard. It provides optimal traction on wet and slippery floors, is anti-static and resistant to oils and greases. Available in three colors. Delivery includes shoehorn and shoe bag.

Upper material: 55% mesh, 30% thermoplastic polyurethane, 15% polyurethane.

Sole: 85% Eva plastic, 15% rubber.

Color: anthracite, navy, black

36, 37, 38, 39, 40, 41, 42, 43, 44, 45, 46, 47, 48

127189  
Pcs./pack 1  
59,99 €



So that you stay cool:  
The Coolmax® lining  
optimally wicks away  
moisture and is very  
breathable.



Slip-on shoe  
Easy  
Pair only

**42<sup>99</sup>**

- SRC-certified anti-slip rubber sole
- With adjustable heel strap and anatomic leather footbed
- Antistatic



## Practical and functional



Professional clog  
Basic  
Pair only

**59<sup>99</sup>**

- SRC-certified anti-slip rubber sole
- With adjustable heel strap and anatomic leather footbed
- Antistatic



JOBELINE

### Slip-on shoe Easy

Slip-on shoe for men and women. Complies with EN ISO 20347:2012 standard. 100% leather upper, synthetic fiber lining. Water-repellent, with anatomical leather footbed for optimal comfort. Individually adjustable by heel strap. The anti-slip rubber outsole complies with the SRC standard. It provides optimum traction on wet and slippery floors, has an antistatic effect and is resistant to oils and greases. Available in white or black. Delivery incl. shoe bag. Upper material: leather. Inner material: 50% polyurethane, 50% polyamide. Sole: 100% polyurethane. Color: black, white  
36, 37, 38, 39, 40, 41, 42, 43, 44, 45, 46, 47

127173  
Pcs./pack 1  
42,99 €

**OB**

JOBELINE

### Professional clog Basic

Our basic clog for men and women! Complies with the EN ISO 20347:2012 standard. 100% leather upper, synthetic fiber lining. Water-repellent, with anatomical leather footbed for optimum wearing comfort. Individually adjustable by heel strap. The anti-slip rubber outsole complies with the SRC standard. It provides optimum traction on wet and slippery floors, has an antistatic effect and is resistant to oils and greases. Available in white or black. Delivery includes shoe bag. Upper material: leather. Inner material: 50% polyurethane, 50% polyamide. Sole: 100% polyurethane. Color: black, white  
36, 37, 38, 39, 40, 41, 42, 43, 44, 45, 46, 47

127165  
Pcs./pack 1  
59,99 €


**OB**



So that the shoe gives the necessary support: Regulate the length of the shoe via the adjustable strap.

# How to find the right PROFESSIONAL SHOE!

## PROTECTION CLASSES

	Professional shoes EN ISO 20347:2012			Safety shoes EN ISO 20345:2011	
Safety level	0B	01	02	S1	S2
Slip resistance** (SRA/SRB/SRC)	✓	✓	✓	✓	✓
Toe cap 				✓	✓
Closed heel area	open heel area possible	✓	✓	✓	✓
Fuel resistance of the sole (FO)				✓	✓
Antistatic properties (A)		✓	✓	✓	✓
Energy absorption capacity in the heel area (E)		✓	✓	✓	✓
Water penetration*			✓		✓

\*Min. 80 min. no water penetration      \*\*SRC (SRA+SRC) Slip resistance on ceramic tiles, cleaning agents, steel plates & glycerine.



multicolored

Professional clog  
Happy  
Pair only

**59<sup>99</sup>**



anthracite

- SRC-certified anti-slip outsole
- With adjustable heel strap and anatomic leather footbed
- Antistatic and especially shock-absorbing in the heel area

JOBELINE

### Professional clog Happy

The clog that makes your female employees happy! Fashionable clog for women. Complies with EN ISO 20347:2012 standard. 100% leather upper, synthetic fiber lining. Water-repellent. With anatomical leather footbed for optimal wearing comfort. Individually adjustable by heel strap. The slip-resistant Eva sole with rubber outsole complies with the SRC standard. It provides optimum traction on wet and slippery floors, has an antistatic effect and is resistant to oils and greases. Available in anthracite or with floral pattern. Delivery includes shoe bag.

Upper material: leather. Inner material: 50% polyurethane, 50% polyamide. Sole: 85% Eva plastic, 15% rubber.

Color: anthracite, multicolored

36, 37, 38, 39, 40, 41, 42

127167

Pcs./pack 1

59,99 €

0B



So that you stand comfortably: The slightly raised heel of the clog Happy makes long standing and walking comfortable.