



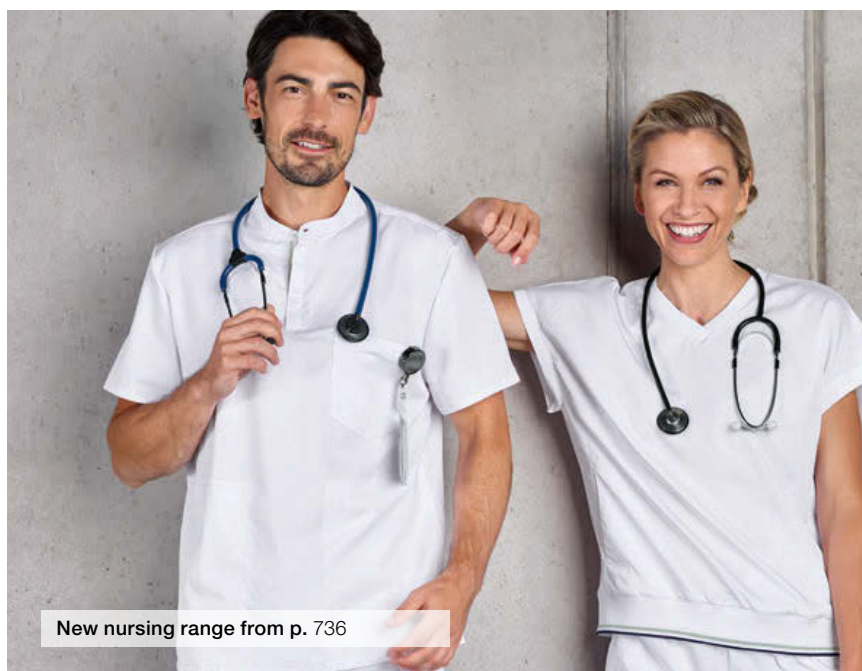
Women's trousers Matera p. 741

Women's tunic Paola p. 736

**NEW**

NEW  
*Collection*

With our new nursing range  
you and your team are super  
equipped for the stressful everyday life.



New nursing range from p. 736

NEW



Men's tunic Teramo p. 739

Men's sweatpant Bari p. 740

# NURSING CLOTHING

Comfort, functionality and reliability, along with hygiene, are extremely important in nursing, medical practices or spas. The chic clothing makes work easy, and personalization also strengthens the team spirit.

Mix & Match „Care Collection" .....	736
Tunics .....	742
Polo shirts .....	746
Trousers .....	748



JOBELINE  
Professional shoe Explorer Light  
30109806  
69,99 €  
p. 722



JOBELINE  
Women's polo shirt Cato  
Comfort  
30034540  
29,99 €  
p. 746



JOBELINE  
Women's tunic Maila  
30046845  
29,99 €  
p. 743



**NEW**

Women's sweatpant Sora p. 740

Professional shoe Explorer Light p. 722

■ Breathable and climate regulating

# Modern & casual STYLE

Women's tunic  
Paola  
Piece only

**39<sup>99</sup>**



white



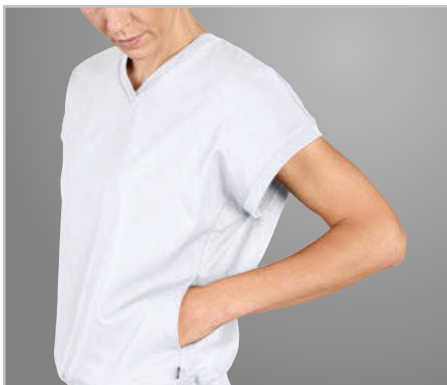
grey

green

navy



■ With stretch content for optimal freedom of movement



■ With V-neck and large side pockets



JOBELINE

### Women's tunic Paola

Modern sweatshirt-style women's tunic made of skin-friendly and breathable Tencel polyester fabric, slightly cooling on the skin. Easy to put on and take off like a shirt and particularly comfortable to wear thanks to the stretch content. At the same time, Tencel™ cellulose fibers of botanical origin define a new standard in sustainability and natural comfort. Slip-on jacket with short, slightly overcut sleeve and V-neck with narrow, elastic cuff. With large side pockets. Loose fit and wide striped cuff at hem. Embroidery for personalization possible.

Lycell 69% (Tencel™)/31% PES, 205 g/m<sup>2</sup>. 60°C wash.

Back length: 56 cm for size S.

Color: grey, green, navy, white

XS, S, M, L, XL, 2XL

1/2 sleeve

165490  
Pcs./pack 1  
39,99 €



Feels so right  
more info at  
www.lusini.com



Women's tunic  
Verona  
Piece only

39<sup>99</sup>



grey



white green navy

JOBELINE

### Women's tunic Verona

Modern women's tunic in polo shirt look made of skin-friendly and breathable Tencel polyester fabric, slightly cooling on the skin. Easy to put on and take off and particularly comfortable to wear thanks to stretch content. At the same time, Tencel™ cellulose fibers of botanical origin define a new standard in sustainability and natural comfort. Slip-on tunic with short sleeves, V-neck and two patch pockets, including pen pockets. Slightly rounded hem and side slits. Whether straight or fitted cut, uncomplicated and quickly adjustable by the waist band with drawstring in the back. Embroidery for personalization possible.

Lyocell 69% (Tencel™)/31% PES, 205 g/m². 60°C wash.

Back length: 63 cm for size S.

Color: grey, green, navy, white

XS, S, M, L, XL, 2XL

1/2 sleeve

165492  
Pcs./pack 1  
39,99 €



NEW

NURSING CLOTHING

Women's trousers Matera p. 741

Professional shoe Explorer Light p. 722

■ Easy to slip in like a shirt thanks to stretch content



■ With 2 patch pockets incl. pen pockets



■ With practical drawstring in the back for quick adjustment of the waist size

Women's tunic  
Aversa  
Piece only

34<sup>99</sup>

NEW



Feels so right  
more info at  
www.lusini.com



Sweatpant Sora & Bari p. 740

Professional shoe Explorer Light p. 722

Breathable and  
climate regulating



green

Women's tunic  
XS, S, M, L, XL, 2XL  
1/2 sleeve

Aversa  
165578  
Pcs./pack 1  
34,99 €



white grey navy



green

Men's tunic  
S, M, L, XL, 2XL, 3XL  
1/2 sleeve

Fabriano  
165591  
Pcs./pack 1  
34,99 €



white grey navy



Uncomplicated putting  
on and taking off thanks  
to stretch content



With chest pocket

JOBELINE



Tunic Aversa & Fabriano

Modern women's and men's tunic made of skin-friendly and breathable Tencel polyester fabric, slightly cooling on the skin. Easy to put on and take off like a shirt and particularly comfortable to wear thanks to stretch content. At the same time, Tencel™ cellulose fibers of botanical origin define a new standard in sustainability and natural comfort. With short sleeve, V-neck and one chest pocket. Slightly rounded hem with side slits. The women's shirt has a subtle tailored fit, while the men's shirt has a straight cut. Embroidery for personalization possible.

Lyocell 69% (Tencel™)/31% PES. 205 g/m². 60°C wash.

Back length women: 60 cm for size S.

Back length men: 70 cm for size M.

Color: grey, green, navy, white

XS, S, M, L, XL, 2XL, 3XL

NEW

■ Optimal freedom of movement and climate regulating



navy

Women's tunic  
XS, S, M, L, XL, 2XL  
1/2 sleeve

**Terni**  
165448  
Pcs./pack 1  
39,99 €



white grey green



navy

Men's tunic  
S, M, L, XL, 2XL, 3XL  
1/2 sleeve

**Teramo**  
165505  
Pcs./pack 1  
39,99 €



white grey green

JOBELINE



**Tunic Terni & Teramo**

Modern women's and men's tunic in polo shirt look made of skin-friendly and breathable Tencel polyester fabric, slightly cooling on the skin. Easy to put on and take off and particularly comfortable to wear thanks to the stretch content. At the same time, Tencel™ cellulose fibers of botanical origin define a new standard in sustainability and natural comfort. Slip-on jacket with short sleeves, modern stand-up collar and polo button placket with subtly colored ribbed band as a highlight. With large side pockets and a chest pocket. Slightly rounded hem and side slits. The women's shirt has a discreetly tapered fit, the men's shirt has a straight cut. Embroidery for personalization possible.  
Lyocell 69% (Tencel™)/ 31% PES. 205 g/m². 60°C wash.  
Back length women: 65 cm for size S.  
Back length men: 70 cm for size M.  
Color: grey, green, navy, white  
XS, S, M, L, XL, 2XL, 3XL

Women's tunic  
Aversa  
Piece only

39<sup>99</sup>



Trousers Matera & Pesaro p. 741

Professional shoe Explorer Light p. 722

NURSING CLOTHING



■ Modern polo shirt look with stand-up collar and button placket



■ 2 large, side pockets



Men's sweatpant  
Bari  
Piece only  
**49<sup>99</sup>**



Women's sweatpant  
Sora  
Piece only  
**49<sup>99</sup>**

Professional shoe Explorer Light p. 722

JOBELINE

60'

SWEAT PANT

NEW

# SWEATPANT FIT

## Sweatpant Sora & Bari

Modern women's and men's trousers in sweatpant style made of skin-friendly and breathable Tencel polyester fabric. Slightly cooling on the skin and particularly comfortable to wear thanks to the stretch content. At the same time, Tencel™ cellulose fibers of botanical origin define a new standard in sustainability and natural comfort. With fully elastic waistband and ribbons for tying. Trousers with 2 side pockets, 2 flat patch double cargo pockets on the thigh with division of the upper pockets into 2 compartments. 2 inside back pockets with zipper. Casual fit with slightly tapered trouser leg incl. subtle color contrasting cuff. Embroidery for personalization possible.

Lycell 69% (Tencel™)/31% PES. 205 g/m². 60°C wash.

Inseam length women: 67 cm for size S.

Inseam length men: 70 cm for size M.

Color: grey, green, navy, white

XS, S, M, L, XL, 2XL, 3XL

- 2 side pockets
- Fully elastic waistband incl. ribbons for tying
- Breathable and climate regulating

**Tencel™**

Feels so right  
more info at  
[www.lusini.com](http://www.lusini.com)



■ 2 inside back pockets with zipper



■ Large, flat cargo pockets on the legs



Men's sweatpant  
S, M, L, XL, 2XL, 3XL

**Bari**  
165514  
Pcs./pack 1  
49,99 €

Women's sweatpant  
XS, S, M, L, XL, 2XL

**Sora**  
165499  
Pcs./pack 1  
49,99 €



Men's trousers  
Pesaro  
Piece only

49<sup>99</sup>



Women's trousers  
Matera  
Piece only

49<sup>99</sup>

Professional shoe Explorer Light p. 722

JOBELINE

60°

SLIM  
TAPERED

NEW

**Trousers Matera & Pesaro**

Modern women's and men's trousers made of skin-friendly and breathable Tencel polyester fabric. Slightly cooling on the skin and particularly comfortable to wear thanks to stretch content. At the same time, Tencel™ cellulose fibers of botanical origin define a new standard in sustainability and natural comfort. With fully elastic waistband and ribbons for tying. Trousers with 2 side pockets, 2 inside cargo pockets on the leg including a built-in cell phone pocket. 2 back pockets with zipper. Casual cut with slim tapered trouser leg. Embroidery for personalization possible.

Lyocell 69% (Tencel™)/ 31% PES. 205 g/m². 60°C wash.

Inseam length women: 73 cm for size S.

Inseam length men: 75 cm for size M.

Color: grey, green, navy, white  
XS, S, M, L, XL, 2XL, 3XL

# SLIM TAPERED

- Breathable and climate regulating
- 2 side pockets
- Fully elastic waistband incl. ribbons for tying



■ 2 inside back pockets with zipper



■ Large, inside cargo pockets on the legs



Men's trousers  
S, M, L, XL, 2XL, 3XL

**Pesaro**  
165587  
Pcs./pack 1  
49,99 €

Women's trousers  
XS, S, M, L, XL, 2XL

**Matera**  
165583  
Pcs./pack 1  
49,99 €



NEW



Women's trousers Lexi p. 748

Professional shoe Breeze p. 731

Women's tunic  
Cassandra  
Piece only

34<sup>99</sup>



white

- Extra long, comfortable length (butt covering)
- Practical side pockets and removable waistband for tying
- Extra lightweight and durable fabric



burgundy

taupe

black

navy

JOBELINE

**Women's tunic Cassandra**

Easy-care tunic for women with short sleeves, full-length concealed snap button placket and two side slit pockets. Individually adjustable in width by a belt band. 65% polyester, 35% cotton. 160 g/m<sup>2</sup>. 60°C wash. Back length: 85 cm for size 36. Color: burgundy, navy, black, taupe, white 34, 36, 38, 40, 42, 44, 46, 48, 50, 52, 54, 56 1/2 sleeve

126638  
Pcs./pack 1  
34,99 €



Women's tunic  
Maila  
Piece only

29<sup>99</sup>



black

- Concealed snap button placket
- Practical large patch pockets
- Extra lightweight and durable fabric



white burgundy taupe navy

JOBELINE

### Women's tunic Maila

Short sleeved tunic with full-length concealed snap button placket and two front patch pockets.

65% polyester, 35% cotton. 160 g/m<sup>2</sup>. 60°C wash.

Back length: 70 cm for size 36.

Color: burgundy, navy, black, taupe, white

34, 36, 38, 40, 42, 44, 46, 48, 50, 52, 54, 56

1/2 sleeve



126641  
Pcs./pack 1  
29,99 €



Women's trousers Lexi p. 748

Women's trousers Anuk p. 749

Slip-on shoe Easy p. 732



- Non-iron
- With classic placket
- Plenty of storage space thanks to large patch pockets and chest pocket

Slip-on shoe Easy p. 732



Tunic  
Veda  
Piece only  
**29<sup>99</sup>**

# EASY-CARE



- Large patch pocket with integrated cell phone pocket



- Quick-drying and easy-care seersucker

## JOBELINE Tunic Veda



Tunic made of easy-care seersucker material with 2 large patch pockets incl. integrated cell phone pocket on the right and chest pocket. Fully buttoned.

60% polyester, 40% cotton. 60°C wash.

Back length: 73 cm for size 36.

Color: blue/white, white/blackberry, white/taupe

34, 36, 38, 40, 42, 44, 46, 48, 50, 52, 54



blue/white

### Women's tunic striped

Color: blue/white  
1/2 sleeve

117547  
Pcs./pack 1  
29,99 €



white/blackberry

white/taupe

### Women's tunic plain

Color: white/blackberry, white/taupe  
1/2 sleeve

120132  
Pcs./pack 1  
29,99 €

Tunic Erika  
Piece only

26<sup>99</sup>



Tunic Heike  
Piece only

26<sup>99</sup>



JOBELINE colored white

**Tunic Erika**

Tunic with color-matching application, V-neck and 2 pockets.

white: 100% cotton. 95°C wash.

colored: 65% polyester, 35% cotton.

60°C wash.

Back length: 73 cm for size 36.

34, 36, 38, 40, 42, 44, 46, 48, 50, 52, 54

■ Durable and robust material

■ 2 large patch pockets

■ With classic button placket



white



navy/white



green blue

**Women's tunic white**

Color: white without arm

119265  
Pcs./pack 1  
26,99 €

**Women's tunic colored**

Color: blue, green, navy/white without arm

100685  
Pcs./pack 1  
26,99 €

JOBELINE colored white

**Tunic Heike**

Attractive tunic with decorative piping, 2 pockets and side button closure.

white: 100% cotton. 95°C wash.

colored: 65% polyester, 35% cotton.

60°C wash.

Back length: 78 cm for size 36.

34, 36, 38, 40, 42, 44, 46, 48, 50, 52, 54

■ Durable and robust material

■ Extremely easy-care

■ With side buttons to close at the waist



white



navy/white



green blue

**Women's tunic white**

Color: white without arm

119266  
Pcs./pack 1  
26,99 €

**Women's tunic colored**

Color: blue, green, navy/white without arm

100684  
Pcs./pack 1  
26,99 €

Polo shirt  
Cato  
Piece from

26<sup>99</sup>

Women's polo shirt  
Cato Comfort  
Piece only

29<sup>99</sup>



- Sanitized® hygiene function reliably neutralizes odors
- with 2 patch pockets
- Extra long length (butt covering)



**JOBELINE**  
**Polo shirt Cato**



Waisted polo piqué shirt for men and women in easy-care, wrinkle-resistant cotton/spandex quality. The integrated Sanitized® hygiene function reliably protects the material against bacteria and thus guarantees lasting freshness. Flat knit cuffs and collar, side vents. Shirt available in short and three-quarter sleeves. 95% cotton, 5% spandex. 40°C wash. Back length women: 60 cm for size S. Back length men: 71 cm for size M.



navy



navy



navy



white blackberry bordeaux red  
apple green taupe graphite black



white blackberry bordeaux red  
apple green taupe graphite black



white red black

**JOBELINE**  
**Women's polo shirt Cato Comfort**

Slightly fitted polo piqué shirt for women in easy-care, wrinkle-resistant cotton/spandex quality. The integrated Sanitized® hygiene function reliably protects the material from bacteria and thus guarantees lasting freshness. Flat knit cuffs and collar, 2 large pockets on the waist and four-button placket. 95% cotton, 5% spandex. 40°C wash. Back length: 74 cm for size S. Color: blackberry, navy, black, white XS, S, M, L, XL, 2XL 1/2 sleeve

124891  
Pcs./pack 1  
29,99 €



white blackberry black navy

**Men's polo shirt**

Color: apple green, bordeaux, blackberry, graphite, navy, red, black, taupe, white  
S, M, L, XL, 2XL, 3XL  
1/2 sleeve  
101860  
Pcs./pack 1  
26,99 €

**Women's polo shirt**

Color: apple green, bordeaux, blackberry, graphite, navy, red, black, taupe, white  
XS, S, M, L, XL, 2XL  
1/2 sleeve  
101294  
Pcs./pack 1  
26,99 €

**Women's polo shirt 3/4 sleeve**

Color: navy, red, black, white  
XS, S, M, L, XL, 2XL  
3/4 sleeve  
124292  
Pcs./pack 1  
29,99 €

**Even more selection**  
[www.lusini.com](http://www.lusini.com)

Polo shirt  
Fly  
Piece only  
**21<sup>99</sup>**



JOBELINE

**Polo shirt Fly**

Polo piqué shirt for men and women with flat knit cuffs and collar. Women's shirt with four-button placket, men's shirt with three-button placket. Made of robust and easy-care mixed fabric. Comfortable fit thanks to straight cut.

65% polyester, 35% cotton. 60°C wash.

Back length women: 64 cm for size S.

Back length men: 74 cm for size M.

Color: apple green, bordeaux, blackberry, coca brown, graphite, mango, navy, smoky blue, red, black, taupe, turquoise, white

REGULAR

- Especially easy-care & durable
- Straight cut

**Women's polo shirt**  
XS, S, M, L, XL,  
2XL, 3XL  
1/2 sleeve

101301  
Pcs./pack 1  
21,99 €



navy

NEW

**Men's polo shirt**  
XS, S, M, L, XL,  
2XL, 3XL, 4XL  
1/2 sleeve

100672  
Pcs./pack 1  
21,99 €



navy

NEW



**Customizing**  
more info at  
[www.lusini.com](http://www.lusini.com)



Women's trousers  
Lexi  
Piece only

**31<sup>99</sup>**



Professional shoe Breeze p. 731



■ Capri trousers with side slits



■ With 2 back patch pockets



white

black

JOBELINE

**Women's trousers Lexi**

Easy-care capri trousers for women in 5-pocket style with elastic waistband, the width of which can be regulated by a band.

96% cotton, 4% spandex. 40°C wash.

Inseam length: 53 cm for size 36.

Color: black, white

34, 36, 38, 40, 42, 44, 46, 48, 50, 52, 54, 56

126819

Pcs./pack 1

31,99 €





Women's trousers  
Anuk  
Piece only

34<sup>99</sup>



Professional shoe Liberty Knit p. 730

# Same wearing comfort – TWO LENGTHS

JOBELINE

## Women's trousers Anuk

Easy-care, long trousers for women in 5-pocket style with elastic waistband, the width of which can be regulated by a band.

96% cotton, 4% spandex. 40°C wash.

Inseam length: 79 cm for size 36.

Color: black, white

34, 36, 38, 40, 42, 44, 46, 48, 50, 52, 54, 56

126821

Pcs./pack 1

34,99 €



white

black



With comfortable knitted waistband and drawstring





Women's trousers  
Mandy  
Piece only

26<sup>99</sup>

Slip-on shoe Easy p. 732



■ With spandex content  
for optimal freedom  
of movement

Jeans  
Dover  
Piece only

49<sup>99</sup>

Professional shoe Liberty Knit p. 730

JOBELINE

**Women's trousers Mandy**

Women's trousers with elastic waistband and a cargo patch pocket.

100% cotton. 60°C wash.

Inseam length: 80 cm for size 36.

Color: white

34, 36, 38, 40, 42, 44, 46, 48, 50, 52, 54, 56



■ Large cargo patch pocket



white

100331  
Pcs./pack 1  
26,99 €

JOBELINE

**Jeans Dover**

Jeans trousers for men and women. Women's jeans: slim leg, 2 round front pockets, 2 patch back pockets, 6 belt loops, zipper in front center. Men's jeans: straight leg, 5 belt loops, 2 round front pockets, 2 back patch pockets, zipper in front center.

97% cotton, 3% spandex. 60°C wash.

Inseam length women: 81 cm for size 36.

Inseam length men: 82 cm for size 50.

Color: black



black

**Women's jeans**  
34, 36, 38, 40, 42,  
44, 46, 48, 50  
117522  
Pcs./pack 1  
49,99 €



black

**Men's jeans**  
44, 46, 48, 50, 52,  
54, 56, 58, 60  
101716  
Pcs./pack 1  
49,99 €

More colors p. 678



Women's trousers  
Rina  
Piece only

29<sup>99</sup>

Professional shoe Breeze p. 731

# FREEDOM OF MOVEMENT & functionality

- 2 side pockets and back pockets
- Straight cut trouser leg

JOBELINE

## Women's trousers Rina

Women's trousers in 5-pocket style with side elastic inserts and straight leg.

65% polyester, 35% cotton. 60°C wash.

Inseam length: 80 cm for size 36.

Color: black, white

34, 36, 38, 40, 42, 44, 46, 48, 50

40



white

black

100904  
Pcs./pack 1  
29,99 €



- With side elastic inserts for more comfort