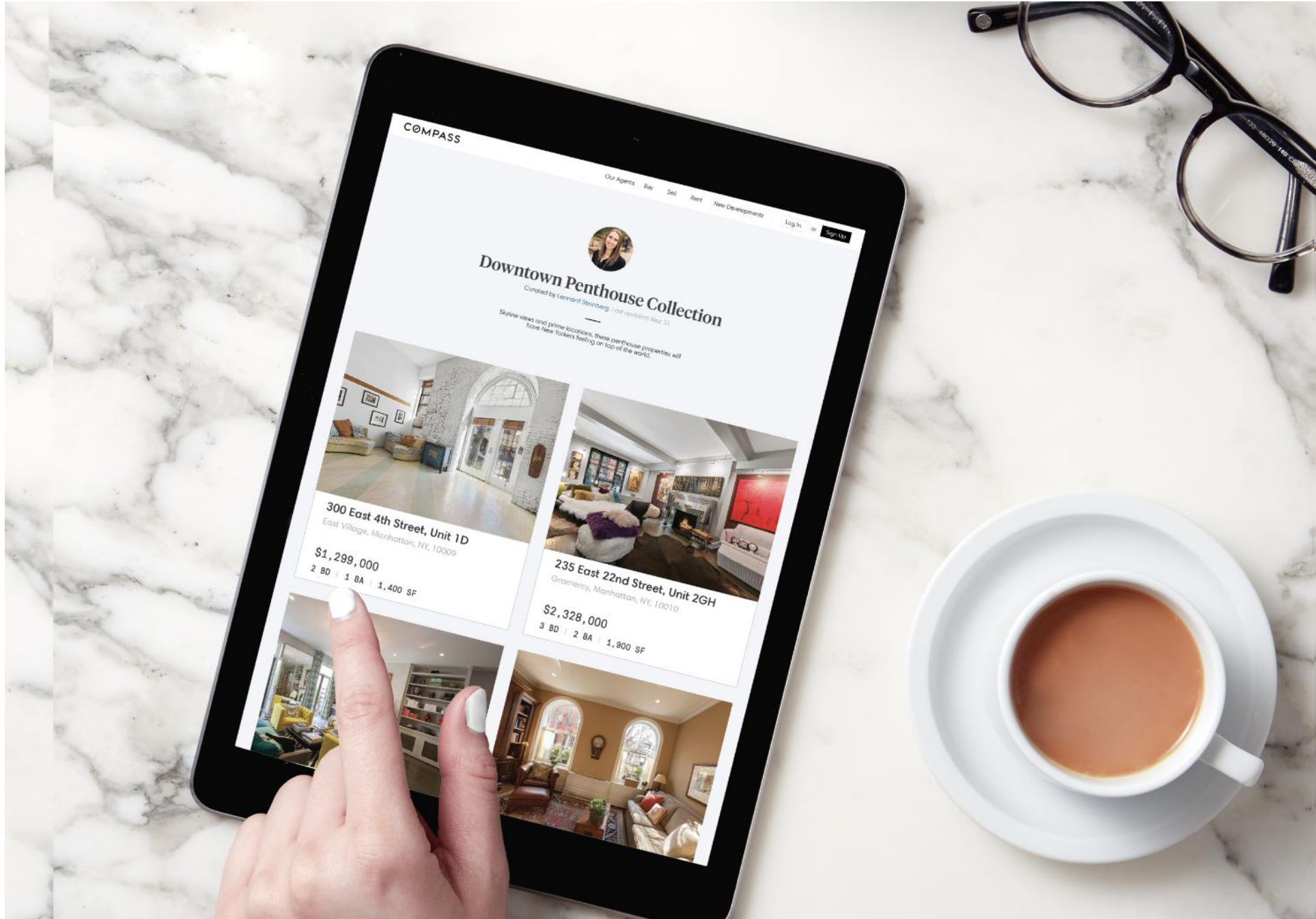


# 3 Tools for a Simpler Home Search



COMPASS

Our Agents Buy Sell Rent New Developments Log In Sign Up

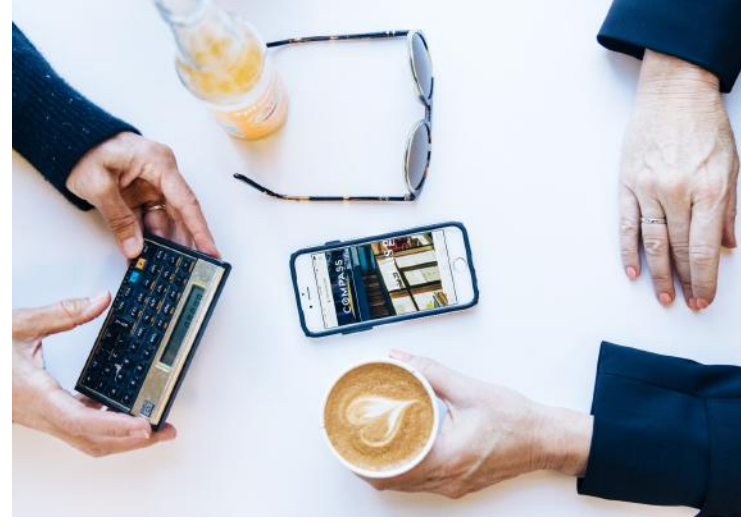
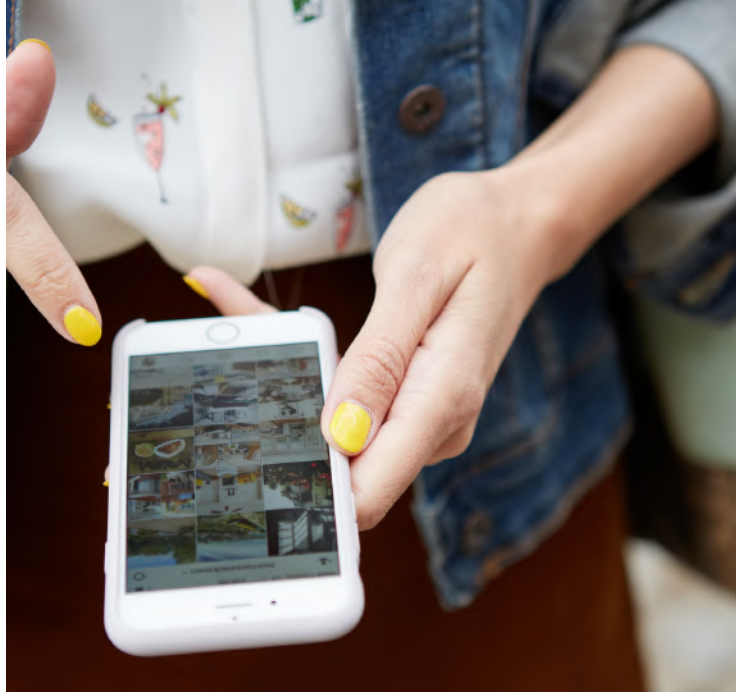
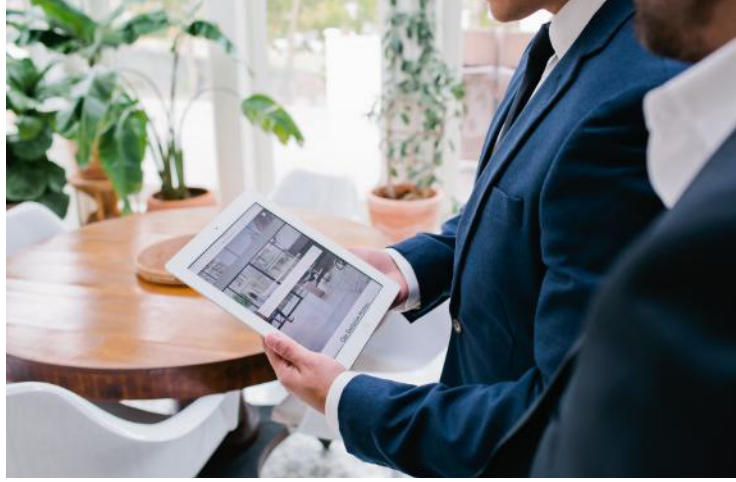
**Downtown Penthouse Collection**  
Curated by Leonard Steinberg, (last updated Mar 31)

Skyline views and prime locations, these penthouse properties will have New Yorkers feeling on top of the world.

Address	Price	Specs
300 East 4th Street, Unit 1D East Village, Manhattan, NY, 10009	\$1,299,000	2 BD   1 BA   1,400 SF
235 East 22nd Street, Unit 2GH Gramercy, Manhattan, NY, 10010	\$2,328,000	3 BD   2 BA   1,900 SF

# Connect with us anytime, anywhere

Collections   Compass Real Estate   Compass Markets



## Discover Compass Technology

**Collections**, real estate's only visual workspace, serves as the central hub for your search. Keep track of homes you like and save them in one place, invite collaborators and leave comments, and receive automated updates about properties in real time.

**Compass Real Estate** is your mobile search platform, allowing you to sort and filter homes, save them to Collections, and correspond with me directly. It also provides complete listing information so that you can make swift decisions on the go.

**Compass Markets**, our market data app, provides all the historical and competitive analysis you need to make smart decisions. I will work with you to set a strategy, determine a property's value, or negotiate a price using this information.