

# FOR SALE OR LEASE

770 PARK RD NW  
WASHINGTON, DC 20010

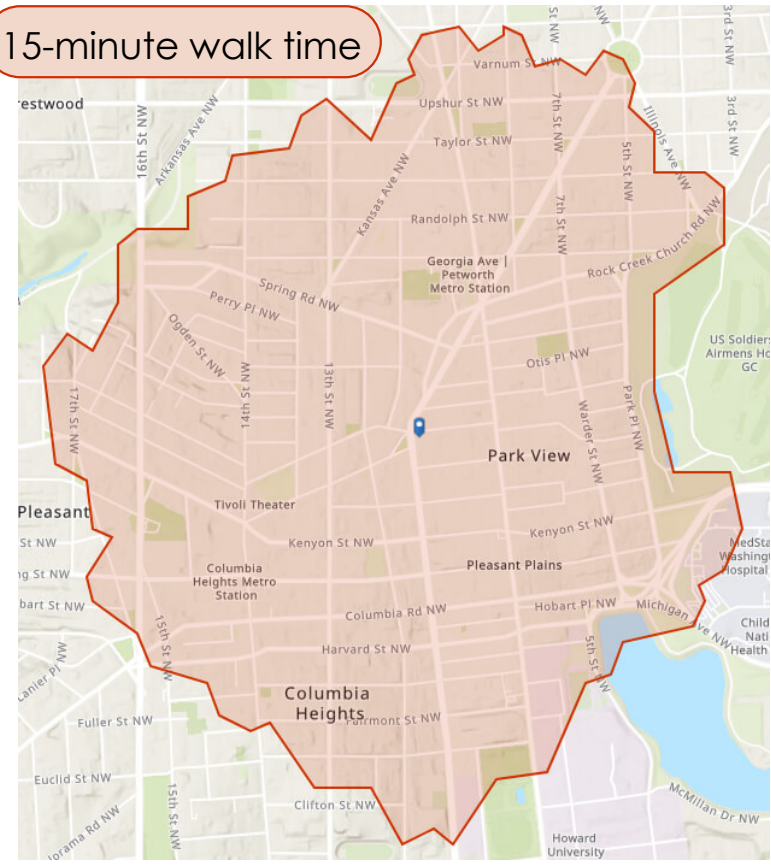
- 4,000 SF, 2-Level Retail Condo
- High Visibility on the Corner of Sherman Ave and Park Rod
- Full Grease Exhaust for F&B Use
- Join Neighbors: Queen's English, Call Your Mother, The Coupe, Hook Hall, and many more!



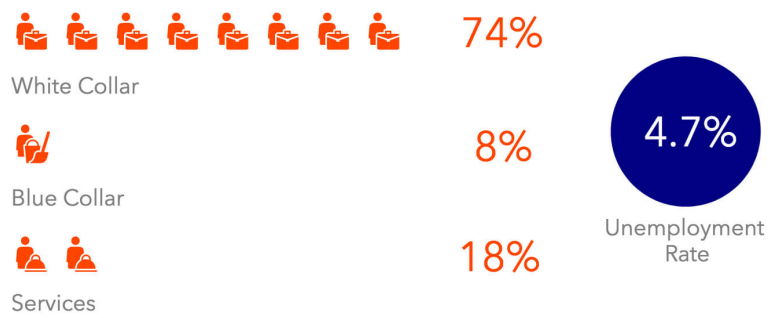
Constantine Gogos | 202.365.5537 T | CGogos@Papadop.com E



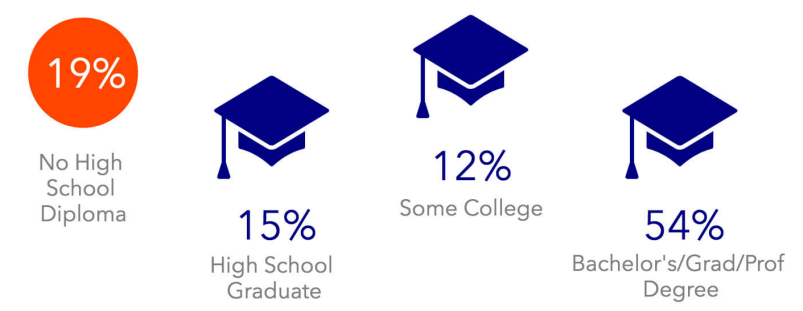
15-minute walk time



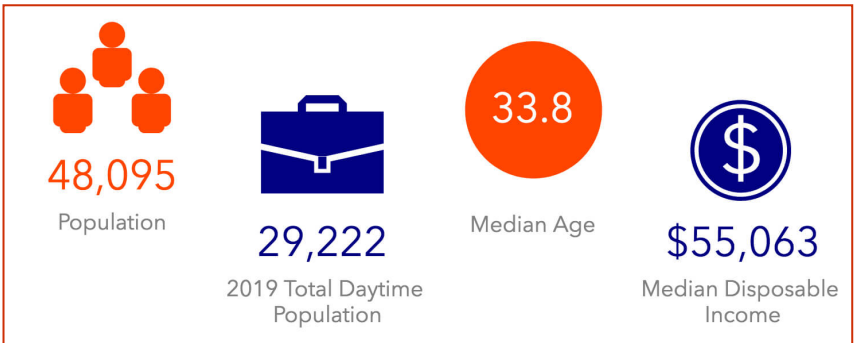
## Employment



## Education



## Key Facts



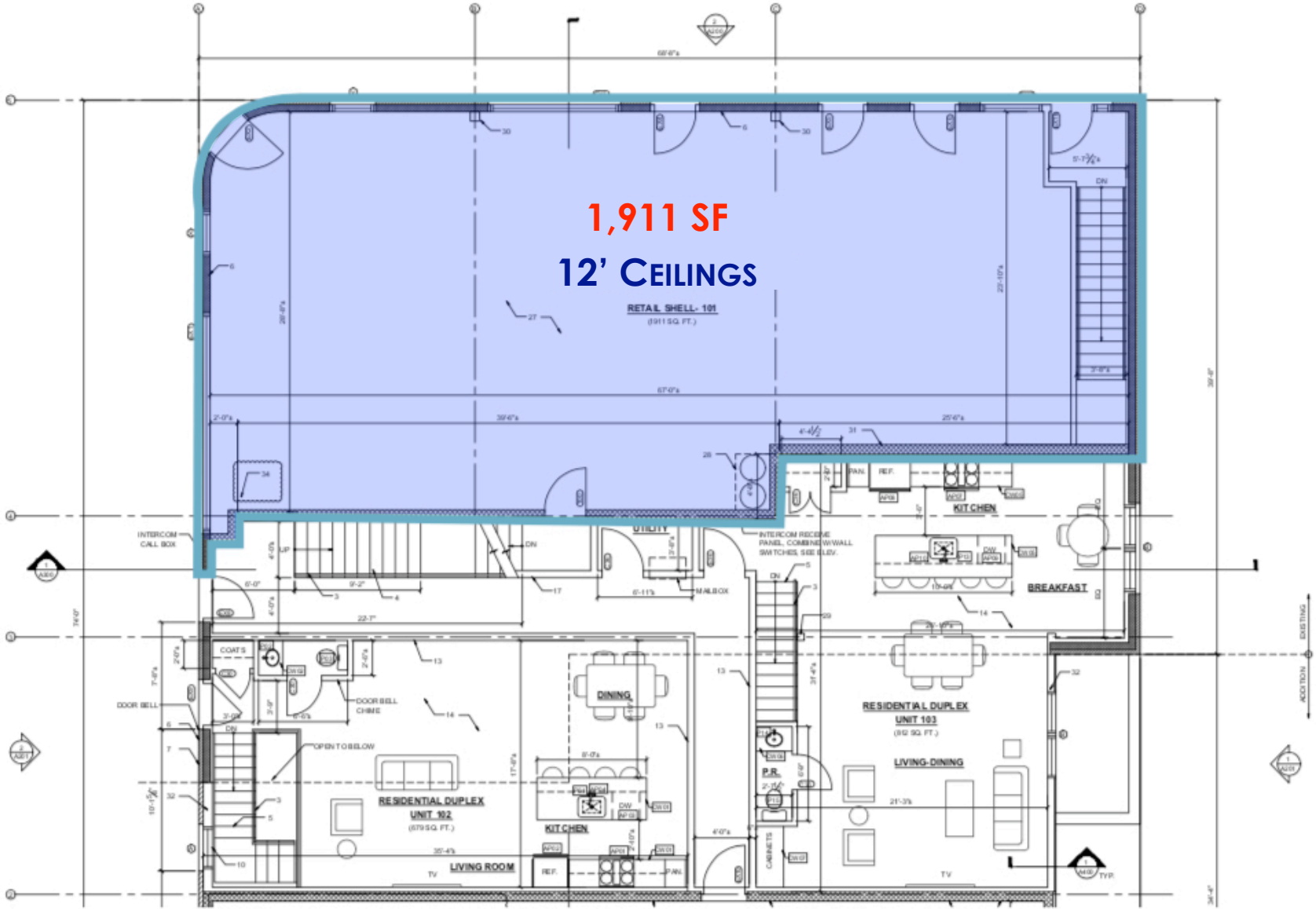
# SITE PLAN - GROUND FLOOR

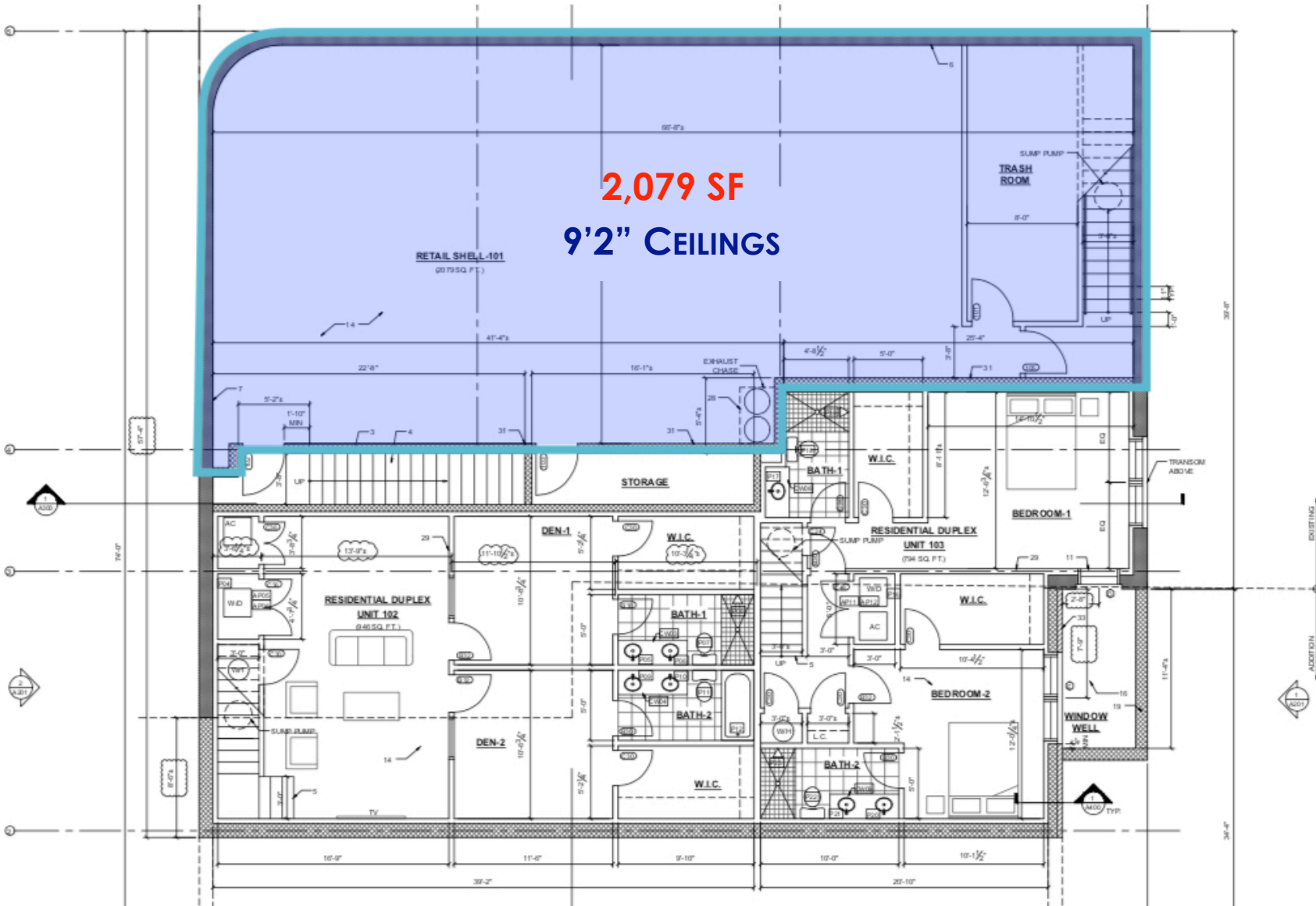
PARK RD

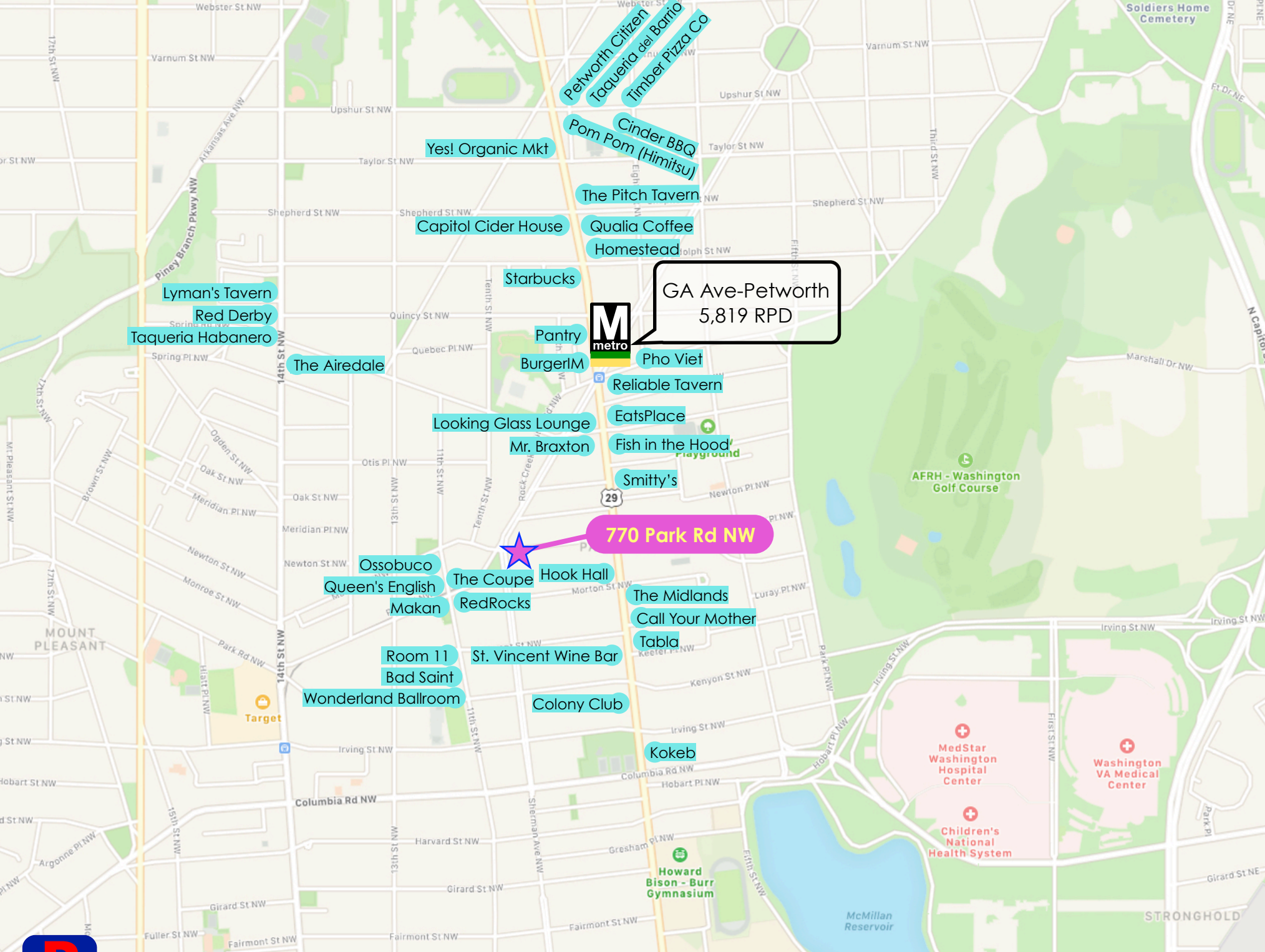
**1,911 SF**  
**12' CEILINGS**

RETAIL SHELL - 101  
(911 SQ. FT.)

SHERMAN AVE







GA Ave-Petworth  
5,819 RPD

770 Park Rd NW

