



COMPASS

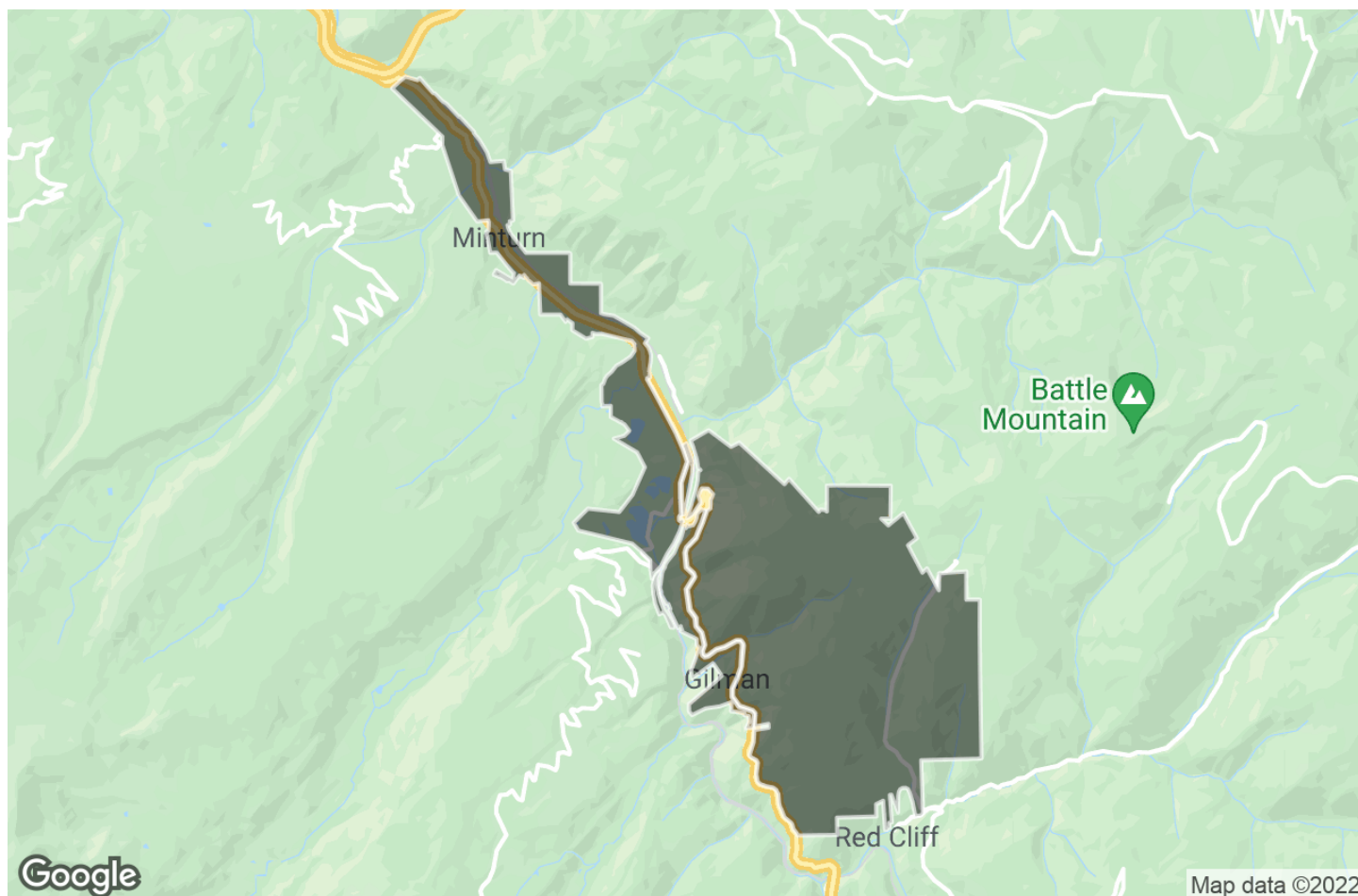
Community Guide

Gilman, Colorado

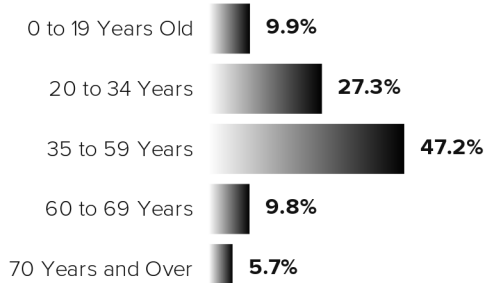
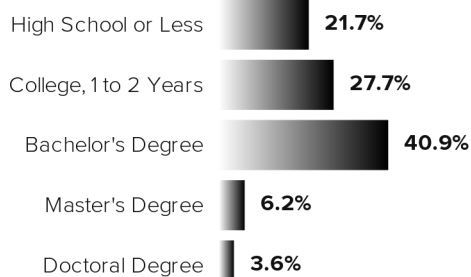
January 2022



About Minturn



Demographics

**1,101****Residents****Age****Education Levels****\$90,521****Median Household Income****Unemployment Rate****1%****Marital Status**

- Married
- Not Married

44%
56%

Data provided by the U.S. Census Bureau

Area Schools

Elementary Schools

| Name | Grades | Enrollment | Stu-Teach Ratio | District |
|---------------------------------|--------------------|------------|-----------------|------------------------------------|
| Homestake Peak School | PK-8 th | 611 | 13:1 | Eagle County School District RE 50 |
| Red Sandstone Elementary School | PK-5 th | 197 | 11:1 | Eagle County School District RE 50 |

High Schools

| Name | Grades | Enrollment | Stu-Teach Ratio | District |
|-----------------------------|-----------------------------------|------------|-----------------|------------------------------------|
| Battle Mountain High School | 9 th -12 th | 955 | 17:1 | Eagle County School District RE 50 |

Data provided by School Digger, National Center for Education Statistics and the U.S. Census Bureau. The schools listed are intended to be used as reference only. To verify enrollment eligibility for an area, contact the school directly.



Top Local Businesses

| Name | | Category | Address |
|----------------------------------|-------|-------------------|---------------------------|
| The Mexican Bar & Grill | ★★★★★ | Mexican | 160 Rail Rd Ave |
| Mango's Mountain Grill | ★★★★★ | Bars | 166 1/2 Eagle St |
| Rocky Mountain Taco | ★★★★★ | Food Trucks | 291 Main St |
| Kirby Cosmo's BBQ Bar | ★★★★★ | Barbeque | 474 Main St |
| Thai Kitchen | ★★★★★ | Thai | 141 Main St |
| Eagle Valley Music | ★★★★★ | Music & DVDs | 211 S Main St |
| Minturn Anglers | ★★★★★ | Fishing | 102 Main St |
| Colorado Backcountry Rentals | ★★★★★ | ATV Rentals/Tours | 322 Turkey Creek Rd |
| Anahata Yoga | ★★★★★ | Yoga | 122 Main St |
| Rocky Mountain Adventure Rentals | ★★★★★ | ATV Rentals/Tours | 1031 Main St |
| Mango's Mountain Grill | ★★★★★ | Bars | 166 1/2 Eagle St |
| Backcountry Wings | ★★★★★ | Chicken Wings | 455 Main St |
| Bistro Fourteen | ★★★★★ | Bars | Vail Mountain Eagles Nest |

Data provided by



Top Lifestyle Trends

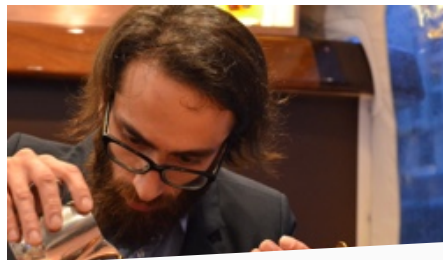
The lifestyles trends below are based on billions of social media data points broken down into 52 segments and mapped at the neighborhood level. The scores indicate the prevalence of each segment in an area.



Outdoor Adventures

98% 

Appreciating the outdoors, this population wants to actively engage with nature. Whether it's finding a new hiking trail or looking for the perfect spot to catch the sunset, they seek to explore the world around them.



Whiskey Business

93% 

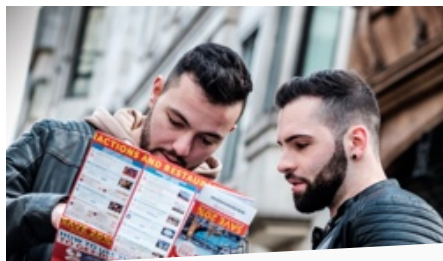
Characterized by their appreciation for all things whiskey, this population enjoys the classy atmosphere of whiskey drinking and learning about different brands.



Mindfulness & Spirituality

92% 

Seeking peace and well-being through meditation, gratitude and spirituality.



Wanderlust

92% 

Always thinking about their next destination, this population loves exploring new places abroad or right in their own backyard. They hold onto past trips by sharing their favorite memories and pictures year round.



Yoga Advocates

85% 

Improving flexibility, strength, and overall well-being is the yogi's aim. This population is looking for the right community, instruction, and accessories.



Nature Lovers

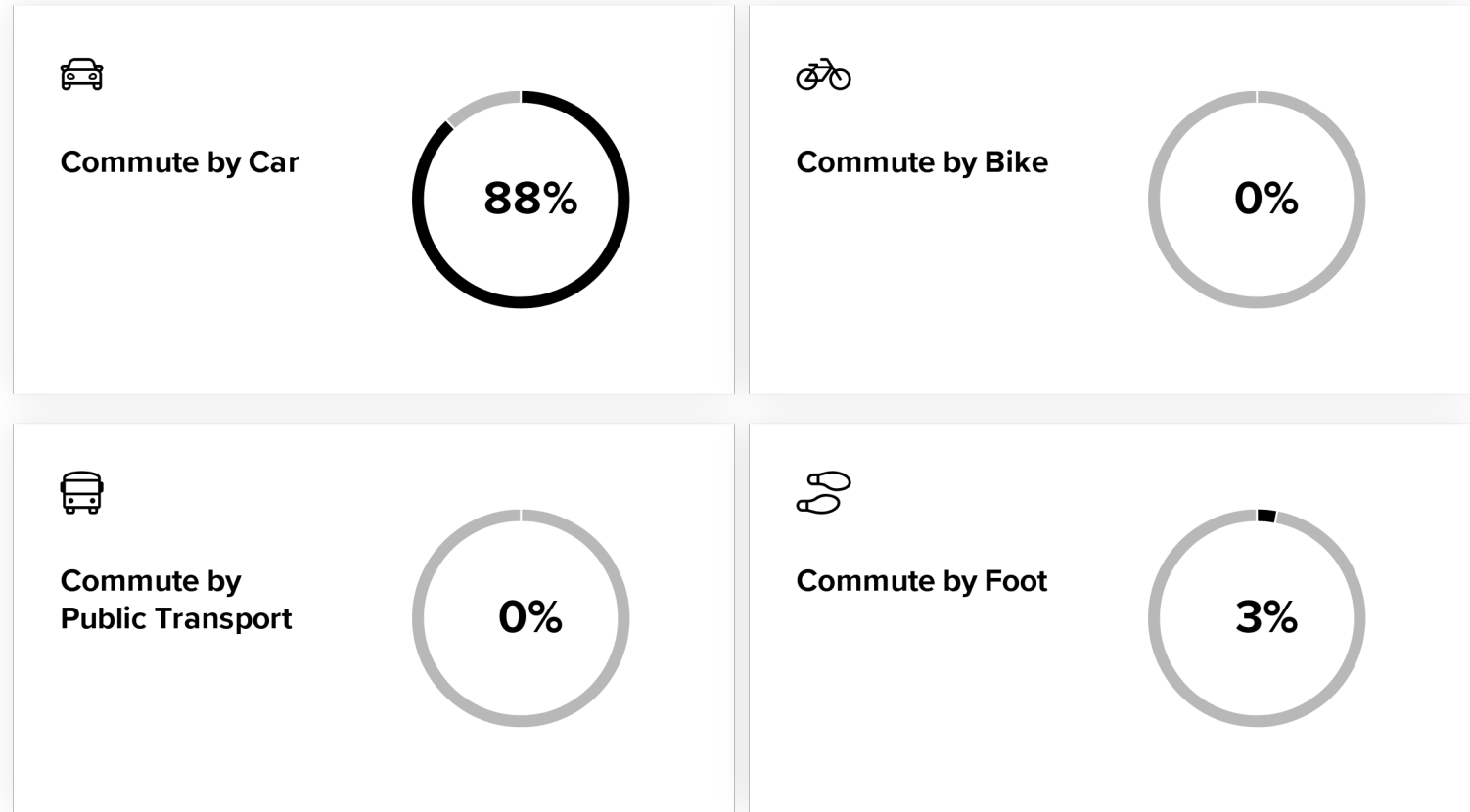
84% 

This population marvels at the beauty of nature, and they want to capture every breath-taking scene.

Commute Highlights

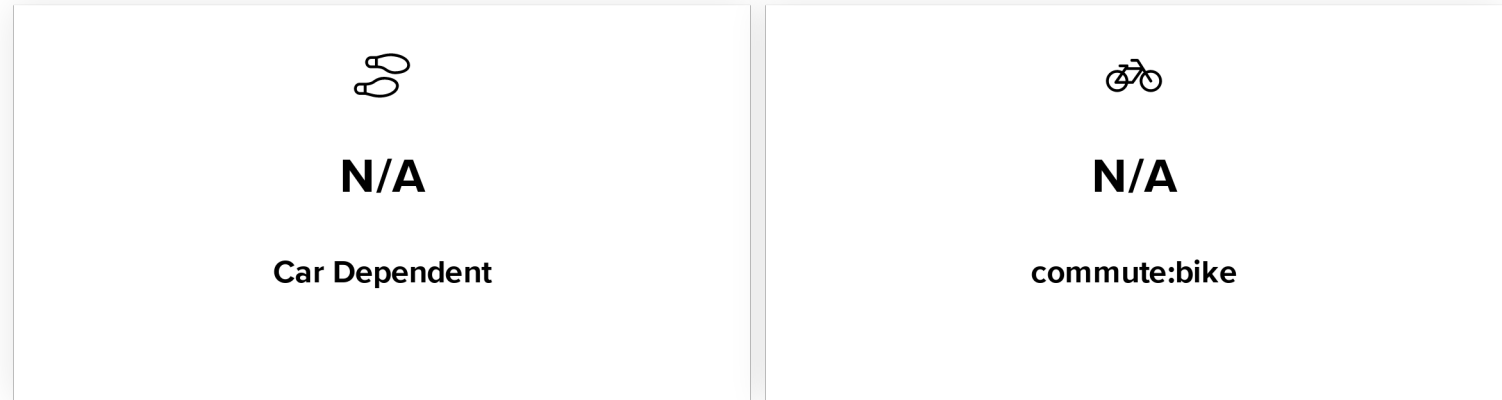
The percent ratings below indicate the portion of area residents who commute to work by walking, car, public transit, or cycling. The most popular method of commuting in this area is car, used by 88% of people, and the average commute time to work is between between thirty and forty-four minutes. Of those commuters, 54% of them leave for work between 6 and 8 AM.

Commute Methods



| Data provided by the U.S. Census Bureau

Walk and Bike Scores



| Data provided by Walk Score®

Environmental Factors


The climate data below highlights environmental factors that Gilman, Colorado faces from climate change in the coming years. The risk scores are based on the latest modeling data from climate scientists, universities, and federal agencies.



The average risk due to climate change for this area is high.



Flood

Very High **79%** 

About **62.62%** of buildings in Gilman have a significant flood risk. A typical building with flood risk in this area has about a **29%** chance of a flood over about **105.6"** deep before 2050.



Storm

High **66%** 

Normally, you experience about **8** significant 2-day storms per year, with about **0.90"** of precipitation per storm.

Normally, you experience about **25** significant 2-day storms per year, with about **1.03"** of precipitation per storm.



Heat

High **53%** 

A day that reaches **78°F** is considered hot for Gilman.

Normally, you experience about **8** hot days per year. The forecast for 2050 is about **40 hot days** per year.



Drought

Moderate **47%** 

The percentage of available water supply used by humans determines water stress. An area is at especially high risk when water stress is above 40%.

The water stress for Gilman is currently about **22.69%**. In 2050 it is predicted that the amount of water stress will be around **25.19%**.



Fire

High **56%** 

Normally, about **1.21%** of land near Gilman burns in a year, or about **379 sq. miles** within a 100-mile radius. The forecast projects that by 2050 the number will change to about **2.77%** of land or **869 sq. miles** per year.

Environmental data provided by ClimateCheck®