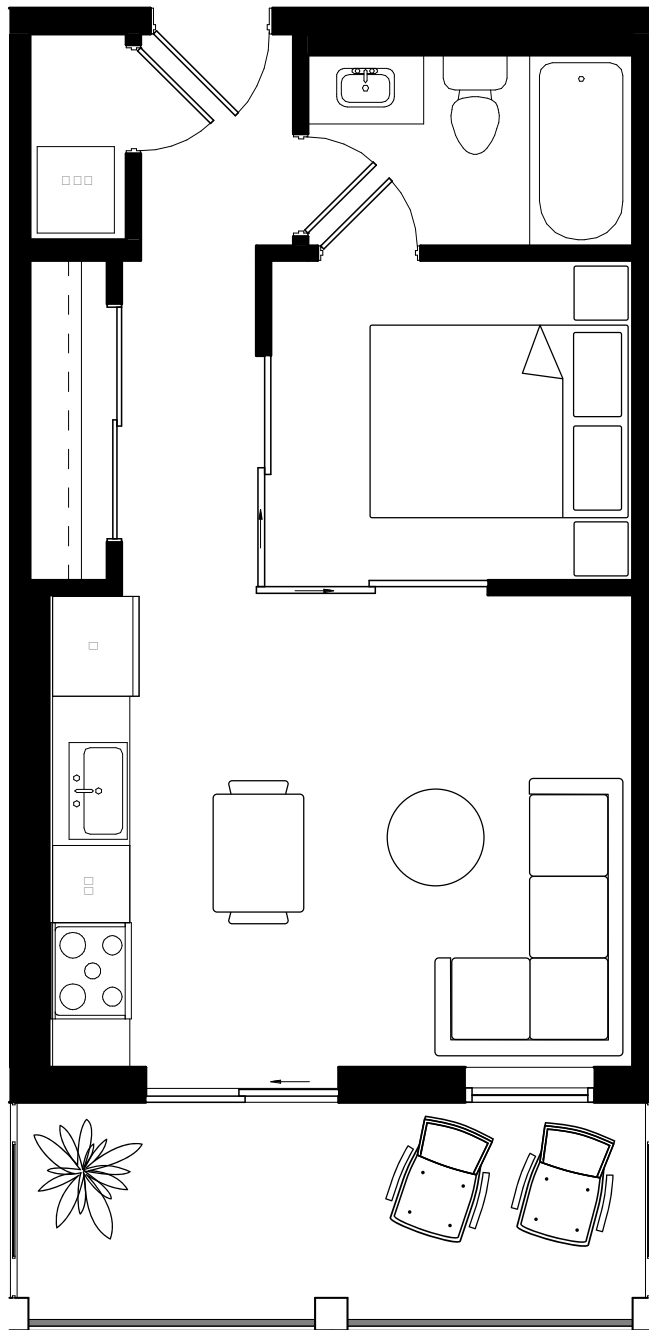


SAVOY

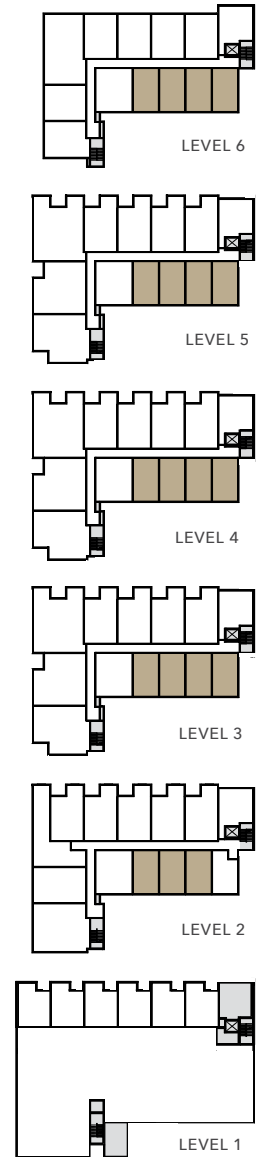
ON CLEMENT

PLAN A1

STUDIO | 1 BATH
INTERIOR: 450 SF
EXTERIOR: 98 SF



CLEMENT AVE



LIVESAVOY.CA

☎ 236-338-1638 ✉ information@livesavoy.ca

Presentation Centre: Suite 103 - 810 Clement Ave, Kelowna

SALES AND MARKETING



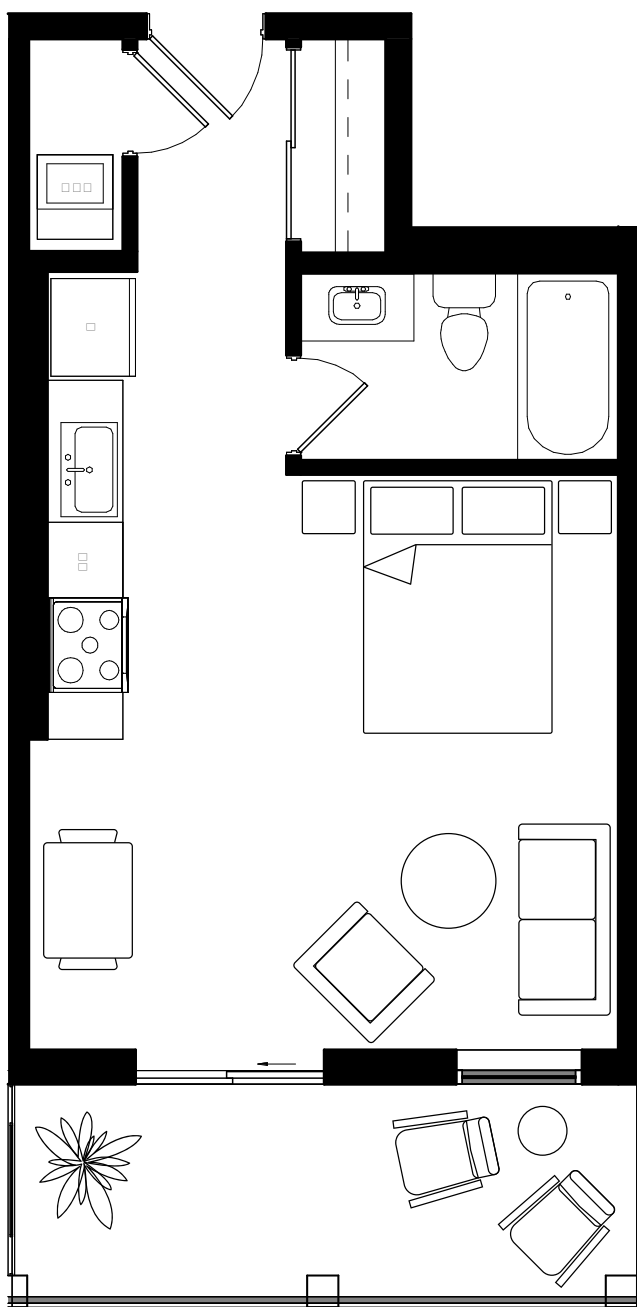
E. & O. E. This is not an offering for sale. Any such offering may only be made with a Disclosure Statement. The developer reserves the right to modify or change plans, specifications, features, materials and prices without notice and at the developer's sole discretion. While we strive for accuracy, all measurements are approximate and are based on the architectural plans. Renderings are conceptual and are intended as a general reference only.

SAVOY

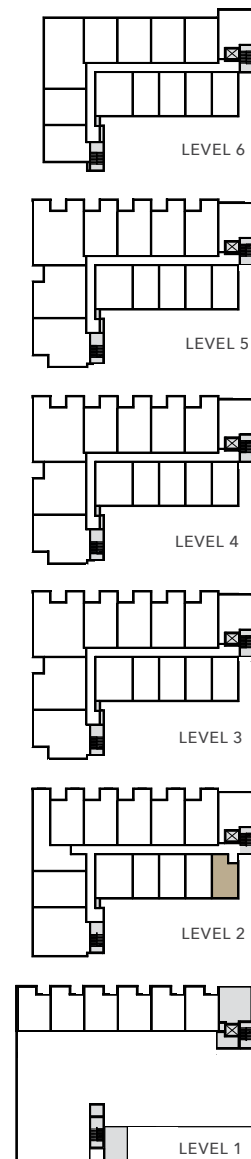
ON CLEMENT

PLAN A2

STUDIO | 1 BATH
INTERIOR: 415 SF
EXTERIOR: 98 SF



CLEMENT AVE



LIVESAVOY.CA

☎ 236-338-1638 ✉ information@livesavoy.ca

Presentation Centre: Suite 103 - 810 Clement Ave, Kelowna

SALES AND MARKETING



E. & O. E. This is not an offering for sale. Any such offering may only be made with a Disclosure Statement. The developer reserves the right to modify or change plans, specifications, features, materials and prices without notice and at the developer's sole discretion. While we strive for accuracy, all measurements are approximate and are based on the architectural plans. Renderings are conceptual and are intended as a general reference only.

SAVOY

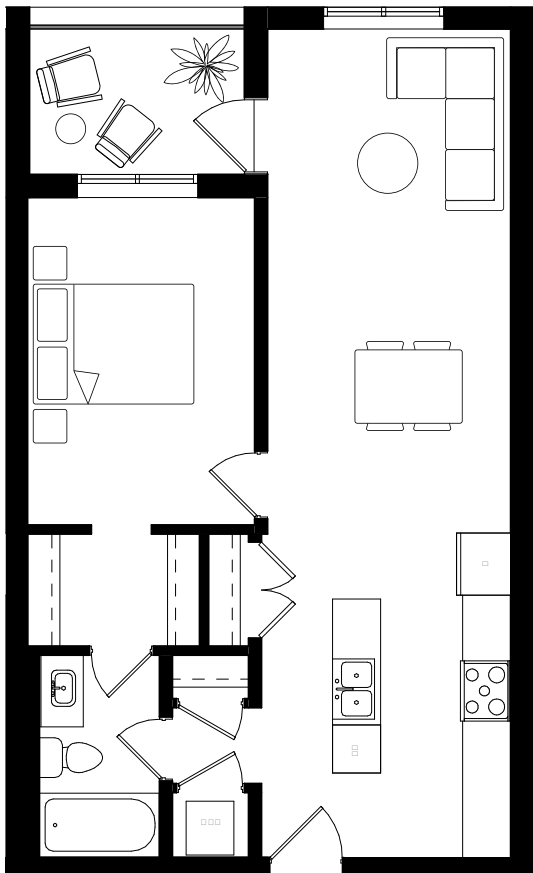
ON CLEMENT

PLAN B1

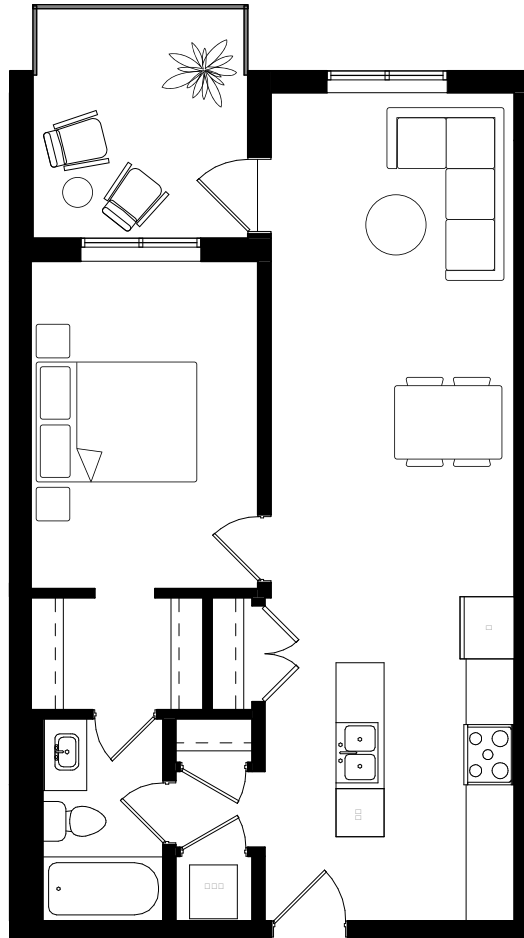
1 BED | 1 BATH

INTERIOR: 660 SF

EXTERIOR B1A: 57 SF / B1B: 87 SF



OPTION A



OPTION B

CLEMENT AVE



LIVESAVOY.CA

☎ 236-338-1638 ✉ information@livesavoy.ca

Presentation Centre: Suite 103 - 810 Clement Ave, Kelowna

SALES AND MARKETING



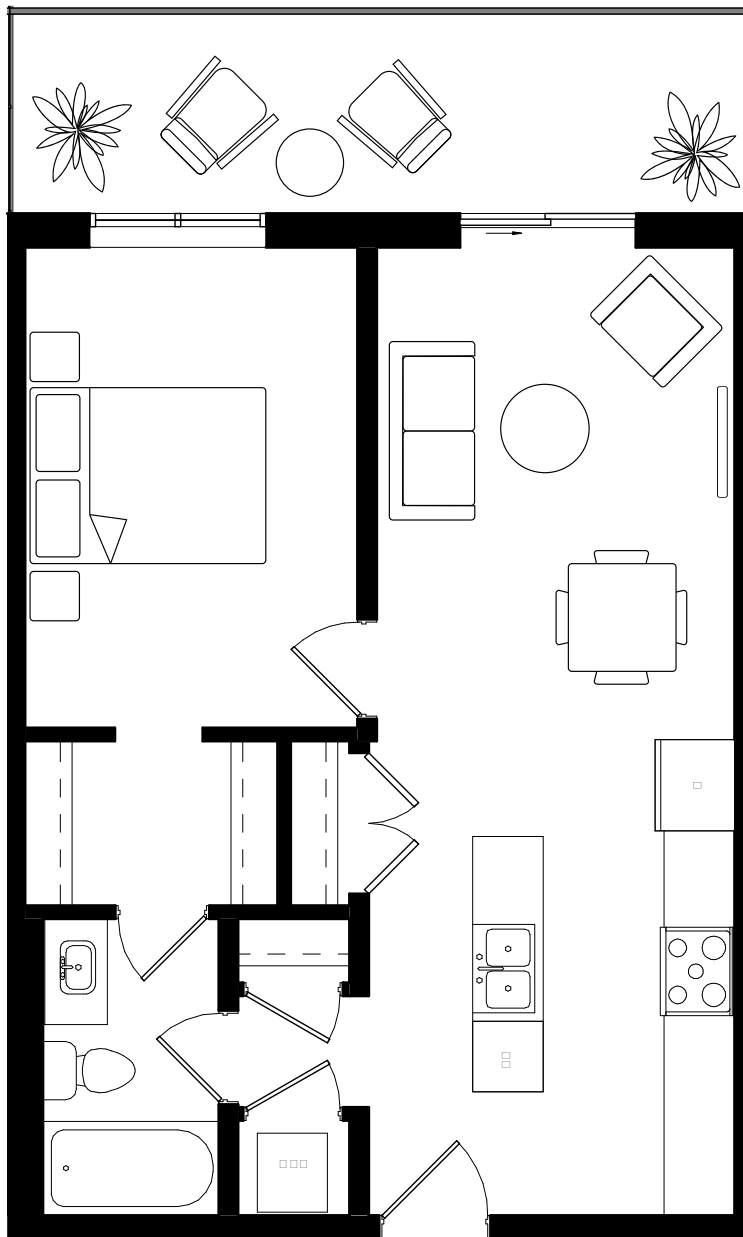
E. & O. E. This is not an offering for sale. Any such offering may only be made with a Disclosure Statement. The developer reserves the right to modify or change plans, specifications, features, materials and prices without notice and at the developer's sole discretion. While we strive for accuracy, all measurements are approximate and are based on the architectural plans. Renderings are conceptual and are intended as a general reference only.

SAVOY

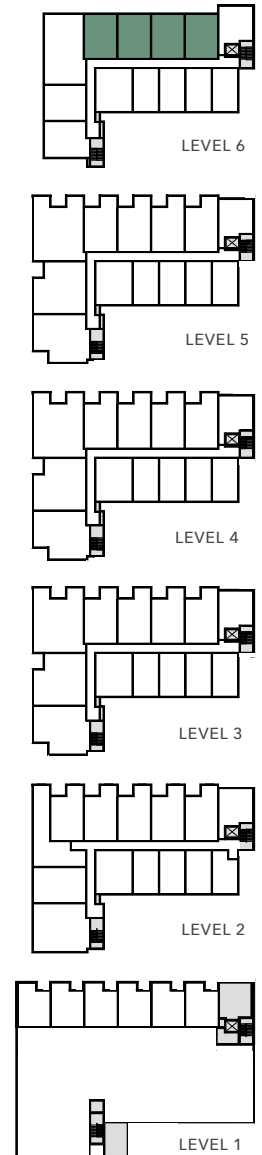
ON CLEMENT

PLAN B2

1 BED | 1 BATH
INTERIOR: 595 SF
EXTERIOR: 125 SF



CLEMENT AVE



LIVESAVOY.CA

☎ 236-338-1638 ✉ information@livesavoy.ca

Presentation Centre: Suite 103 - 810 Clement Ave, Kelowna

SALES AND MARKETING



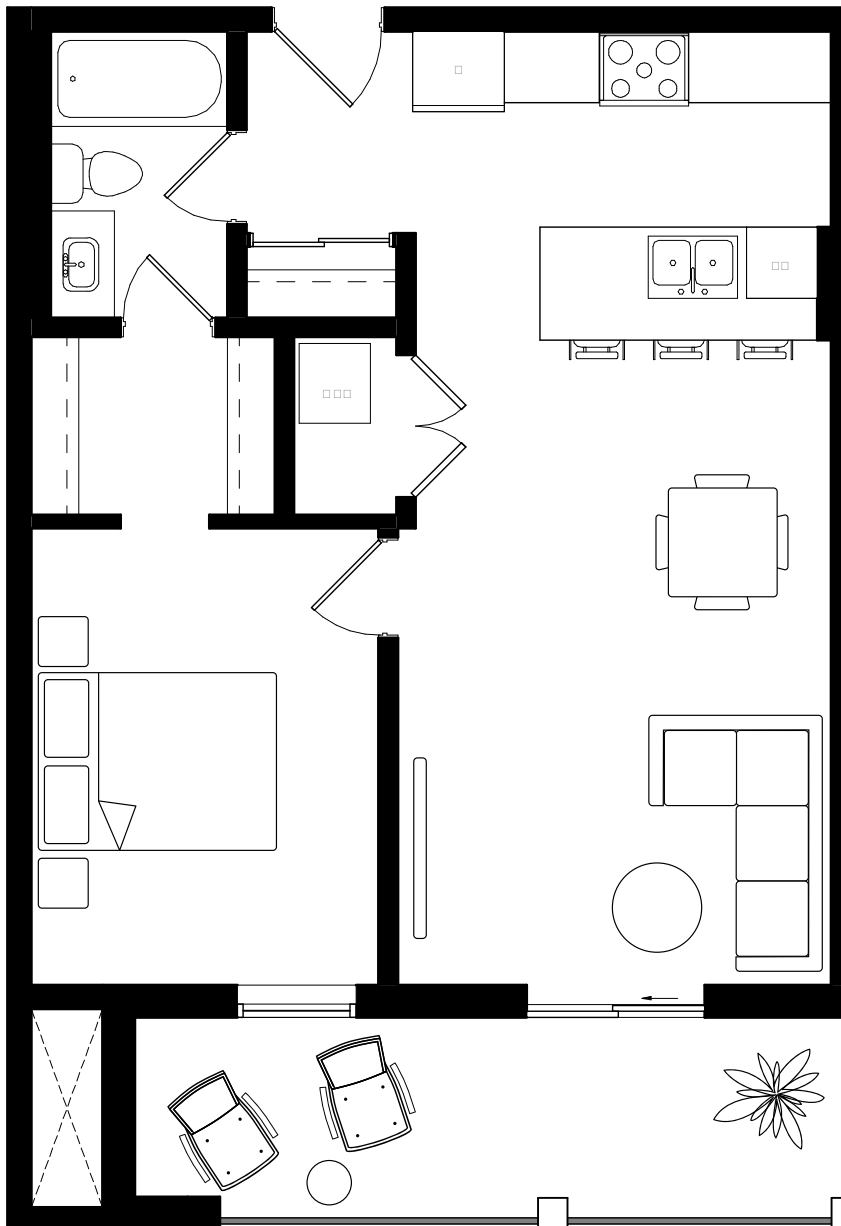
E. & O. E. This is not an offering for sale. Any such offering may only be made with a Disclosure Statement. The developer reserves the right to modify or change plans, specifications, features, materials and prices without notice and at the developer's sole discretion. While we strive for accuracy, all measurements are approximate and are based on the architectural plans. Renderings are conceptual and are intended as a general reference only.

SAVOY

ON CLEMENT

PLAN B3

1 BED | 1 BATH
INTERIOR: 635 SF
EXTERIOR: 114 SF



CLEMENT AVE



LIVESAVOY.CA

☎ 236-338-1638 ✉ information@livesavoy.ca

Presentation Centre: Suite 103 - 810 Clement Ave, Kelowna

SALES AND MARKETING



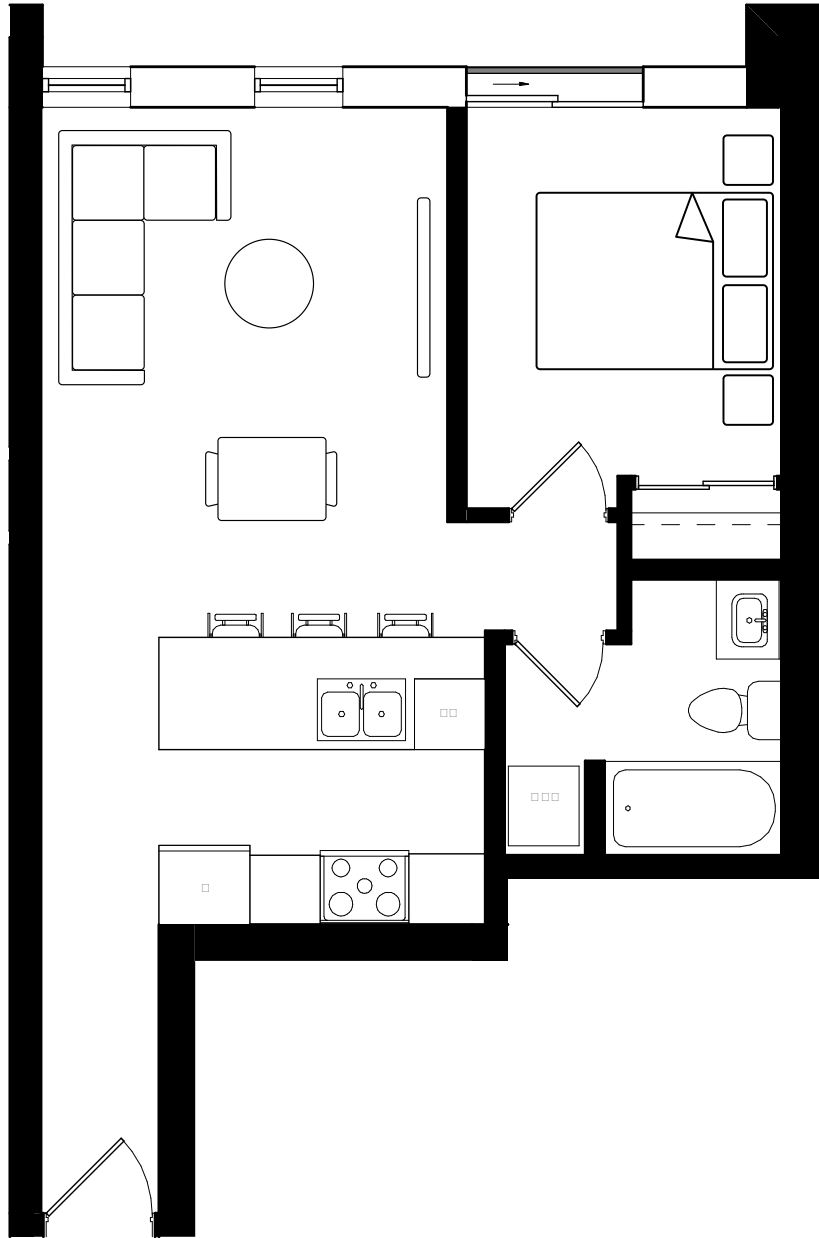
E. & O. E. This is not an offering for sale. Any such offering may only be made with a Disclosure Statement. The developer reserves the right to modify or change plans, specifications, features, materials and prices without notice and at the developer's sole discretion. While we strive for accuracy, all measurements are approximate and are based on the architectural plans. Renderings are conceptual and are intended as a general reference only.

SAVOY

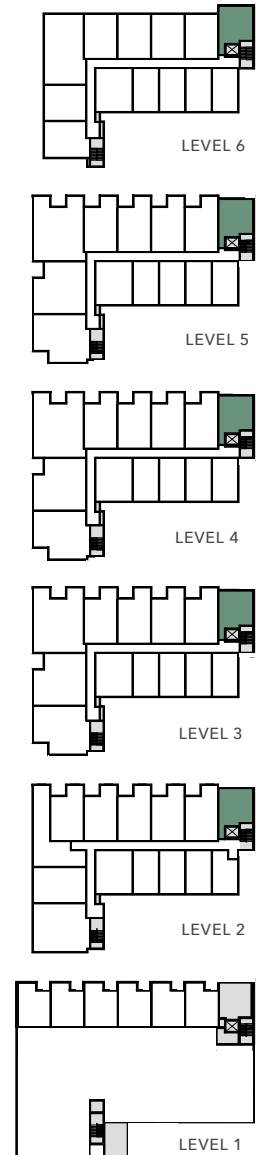
ON CLEMENT

PLAN B4

1 BED | 1 BATH
INTERIOR: 545 SF



CLEMENT AVE



LIVESAVOY.CA

☎ 236-338-1638 ✉ information@livesavoy.ca

Presentation Centre: Suite 103 - 810 Clement Ave, Kelowna

SALES AND MARKETING



E. & O. E. This is not an offering for sale. Any such offering may only be made with a Disclosure Statement. The developer reserves the right to modify or change plans, specifications, features, materials and prices without notice and at the developer's sole discretion. While we strive for accuracy, all measurements are approximate and are based on the architectural plans. Renderings are conceptual and are intended as a general reference only.

SAVOY

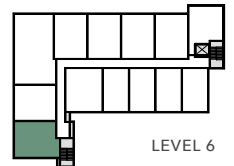
ON CLEMENT

PLAN B5

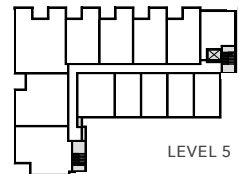
1 BED | 1 BATH
INTERIOR: 633 SF
EXTERIOR: 354 SF



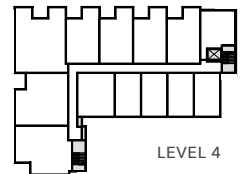
CLEMENT AVE



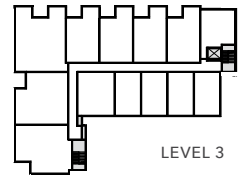
LEVEL 6



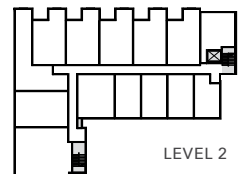
LEVEL 5



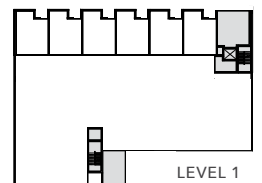
LEVEL 4



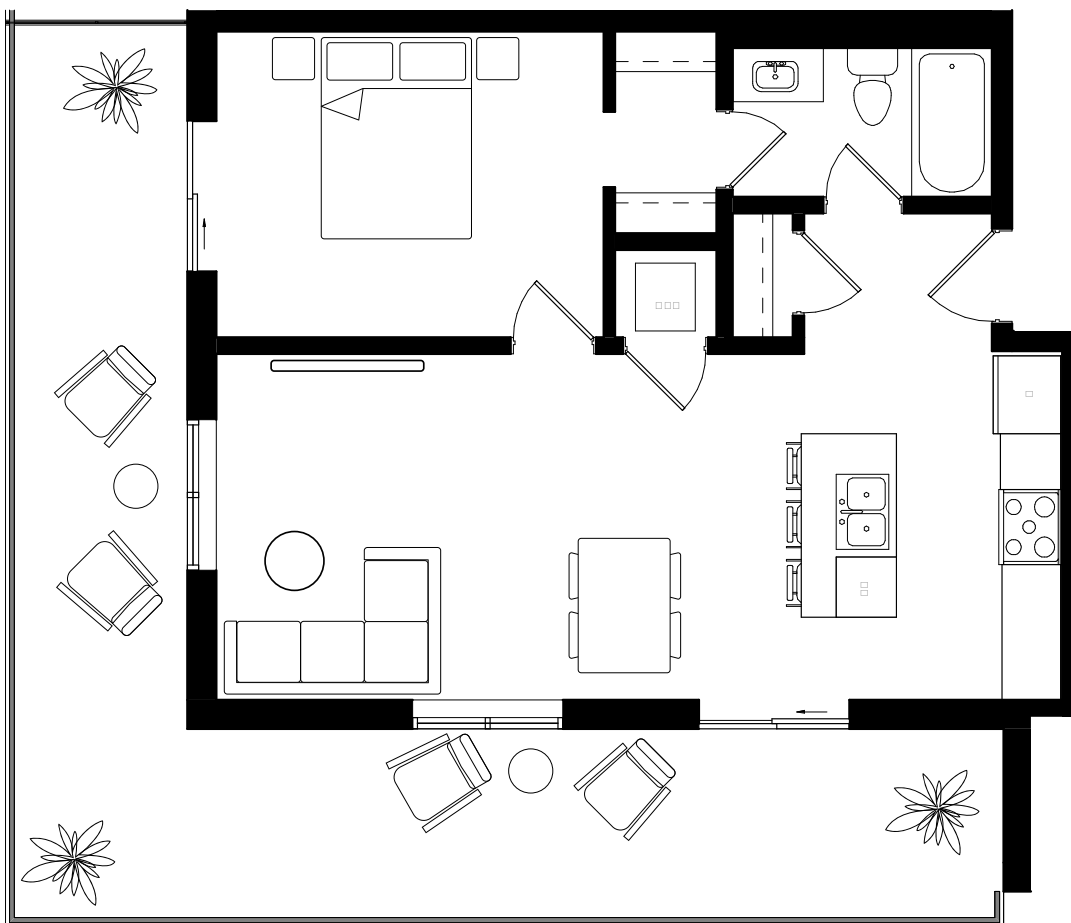
LEVEL 3



LEVEL 2



LEVEL 1



LIVESAVOY.CA

☎ 236-338-1638 ✉ information@livesavoy.ca

Presentation Centre: Suite 103 - 810 Clement Ave, Kelowna

SALES AND MARKETING



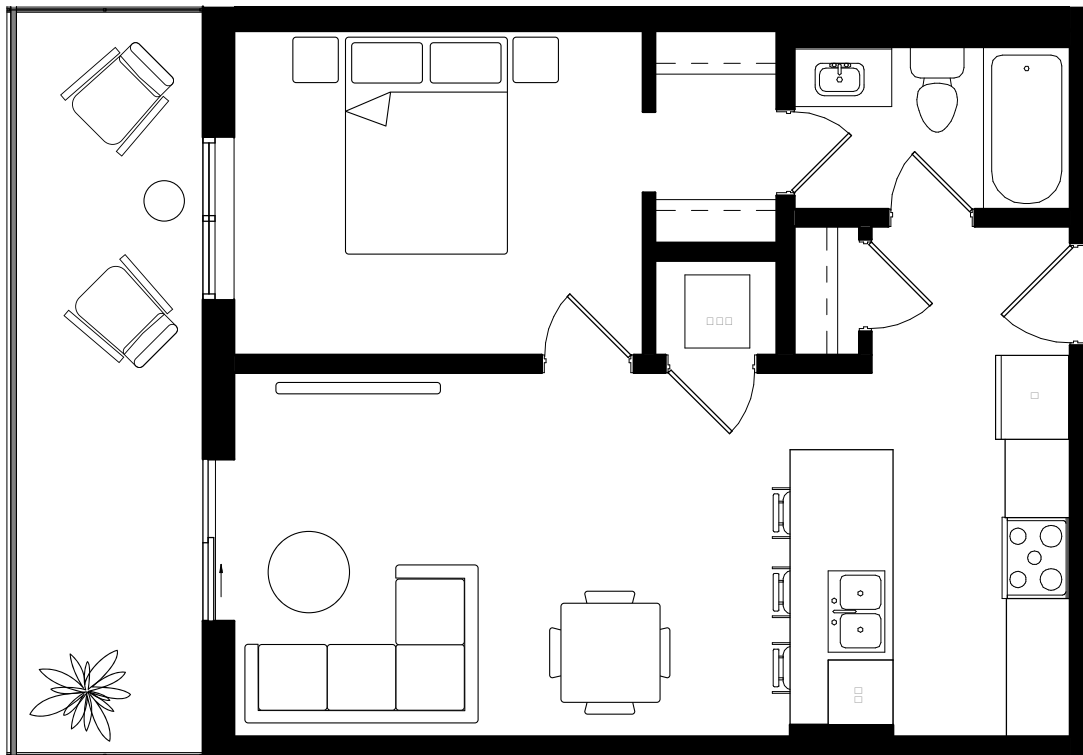
E. & O. E. This is not an offering for sale. Any such offering may only be made with a Disclosure Statement. The developer reserves the right to modify or change plans, specifications, features, materials and prices without notice and at the developer's sole discretion. While we strive for accuracy, all measurements are approximate and are based on the architectural plans. Renderings are conceptual and are intended as a general reference only.

SAVOY

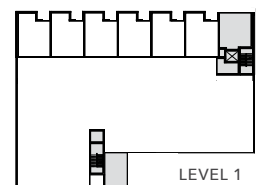
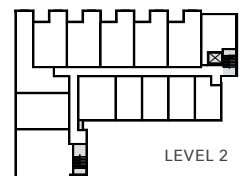
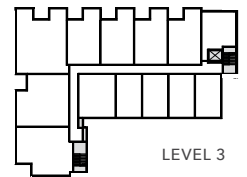
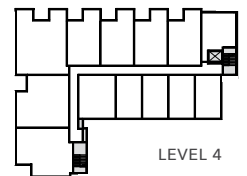
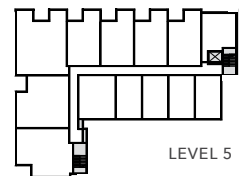
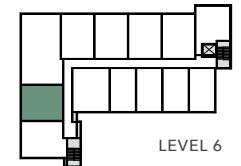
ON CLEMENT

PLAN B6

1 BED | 1 BATH
INTERIOR: 595 SF
EXTERIOR: 137 SF



CLEMENT AVE



LIVESAVOY.CA

☎ 236-338-1638 ✉ information@livesavoy.ca

Presentation Centre: Suite 103 - 810 Clement Ave, Kelowna

SALES AND MARKETING



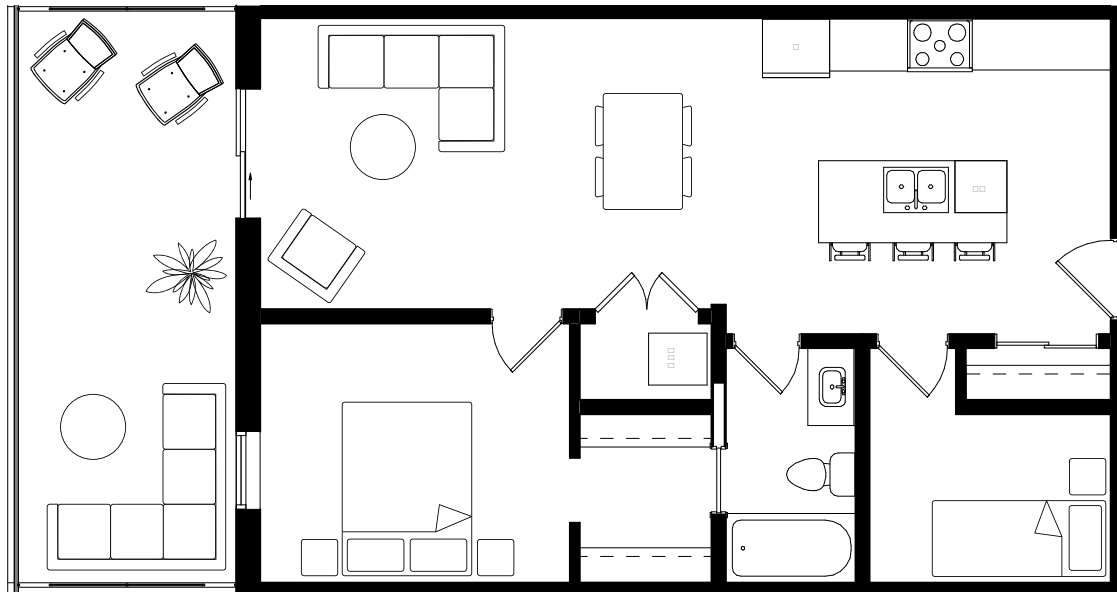
E. & O. E. This is not an offering for sale. Any such offering may only be made with a Disclosure Statement. The developer reserves the right to modify or change plans, specifications, features, materials and prices without notice and at the developer's sole discretion. While we strive for accuracy, all measurements are approximate and are based on the architectural plans. Renderings are conceptual and are intended as a general reference only.

SAVOY

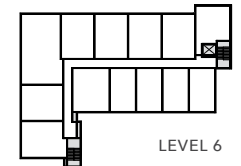
ON CLEMENT

PLAN C1

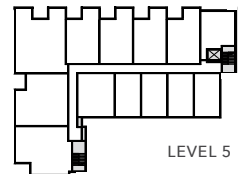
1 BED + DEN | 1 BATH
INTERIOR: 760 SF
EXTERIOR: 191 SF



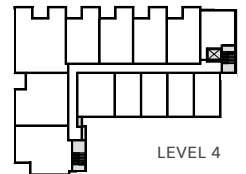
CLEMENT AVE



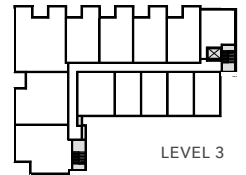
LEVEL 6



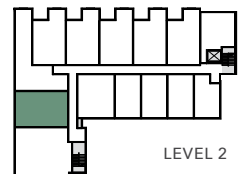
LEVEL 5



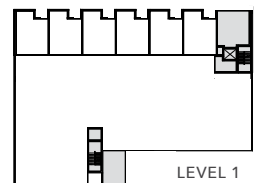
LEVEL 4



LEVEL 3



LEVEL 2



LEVEL 1

LIVESAVOY.CA

☎ 236-338-1638 ✉ information@livesavoy.ca

Presentation Centre: Suite 103 - 810 Clement Ave, Kelowna

SALES AND MARKETING



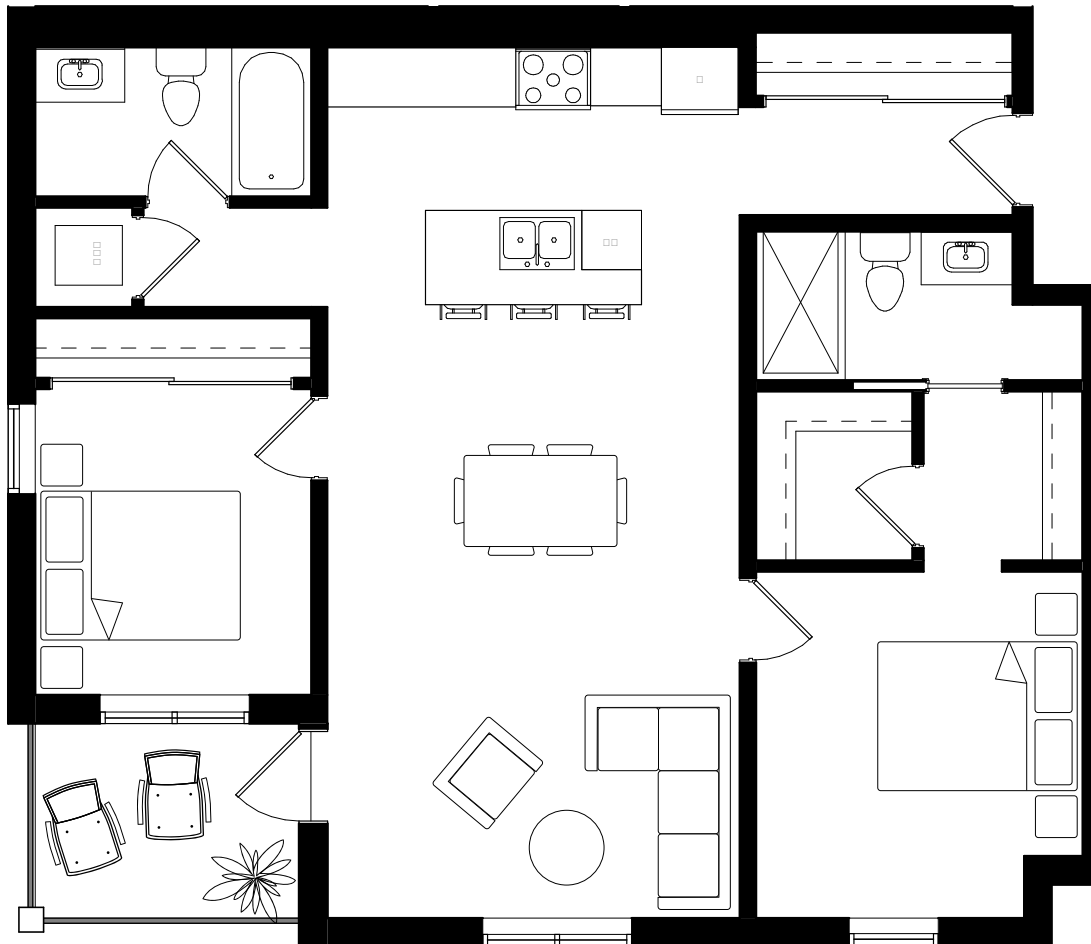
E. & O. E. This is not an offering for sale. Any such offering may only be made with a Disclosure Statement. The developer reserves the right to modify or change plans, specifications, features, materials and prices without notice and at the developer's sole discretion. While we strive for accuracy, all measurements are approximate and are based on the architectural plans. Renderings are conceptual and are intended as a general reference only.

SAVOY

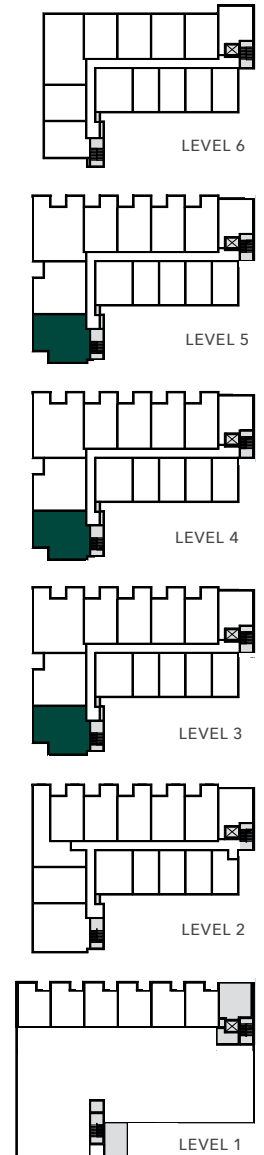
ON CLEMENT

PLAN D1

2 BED | 2 BATH
INTERIOR: 985 SF
EXTERIOR: 61 SF



CLEMENT AVE



LIVESAVOY.CA

☎ 236-338-1638 ✉ information@livesavoy.ca

Presentation Centre: Suite 103 - 810 Clement Ave, Kelowna

SALES AND MARKETING



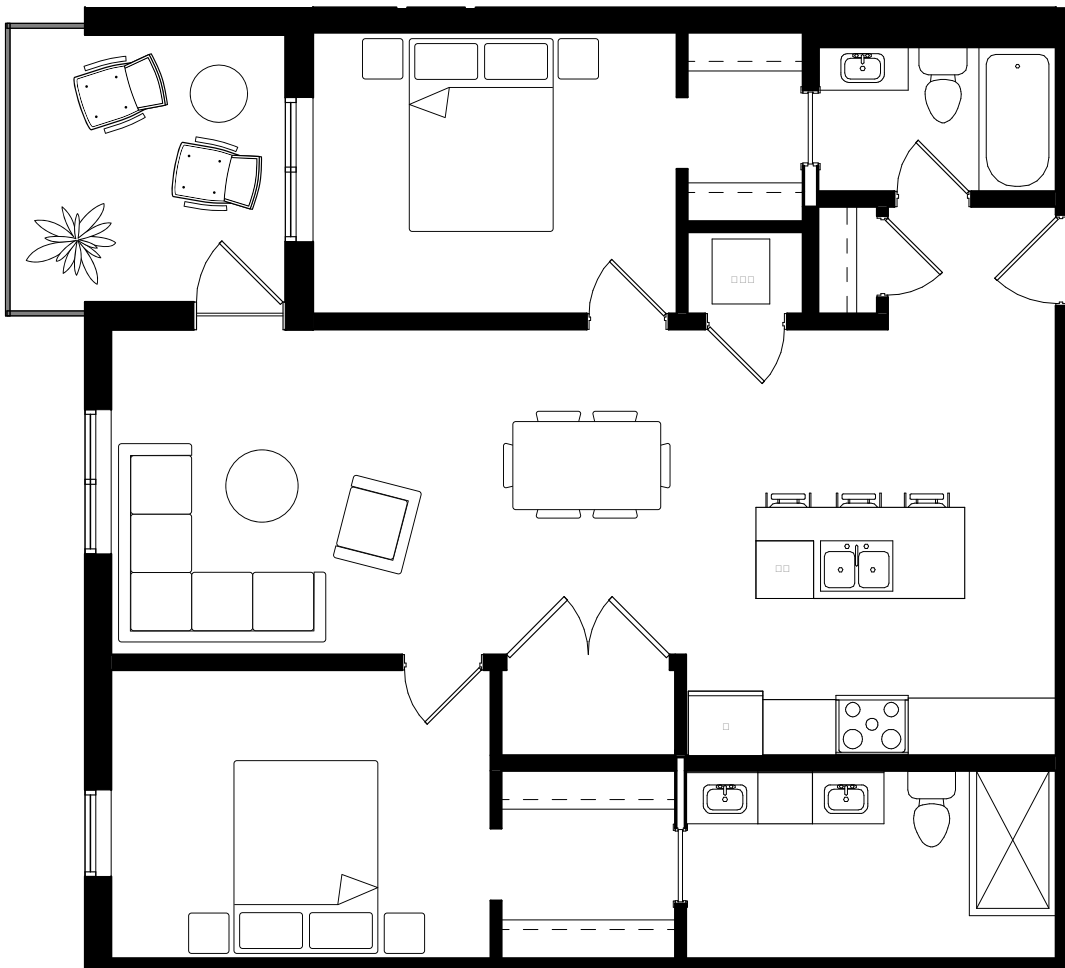
E. & O. E. This is not an offering for sale. Any such offering may only be made with a Disclosure Statement. The developer reserves the right to modify or change plans, specifications, features, materials and prices without notice and at the developer's sole discretion. While we strive for accuracy, all measurements are approximate and are based on the architectural plans. Renderings are conceptual and are intended as a general reference only.

SAVOY

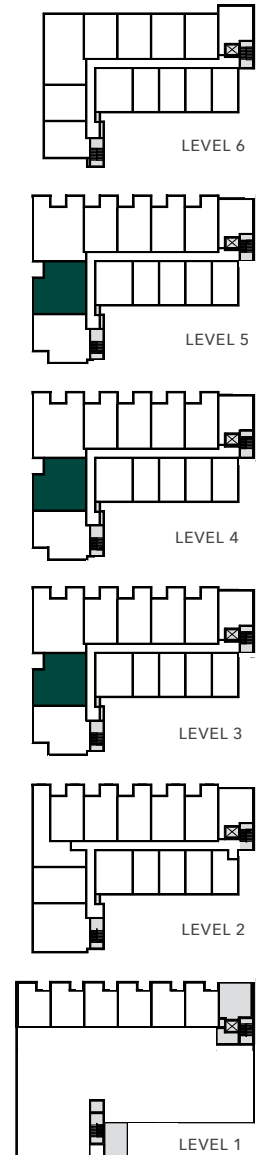
ON CLEMENT

PLAN D2

2 BED | 2 BATH
INTERIOR: 1,030 SF
EXTERIOR: 92 SF



CLEMENT AVE



LIVESAVOY.CA

☎ 236-338-1638 ✉ information@livesavoy.ca

Presentation Centre: Suite 103 - 810 Clement Ave, Kelowna

SALES AND MARKETING



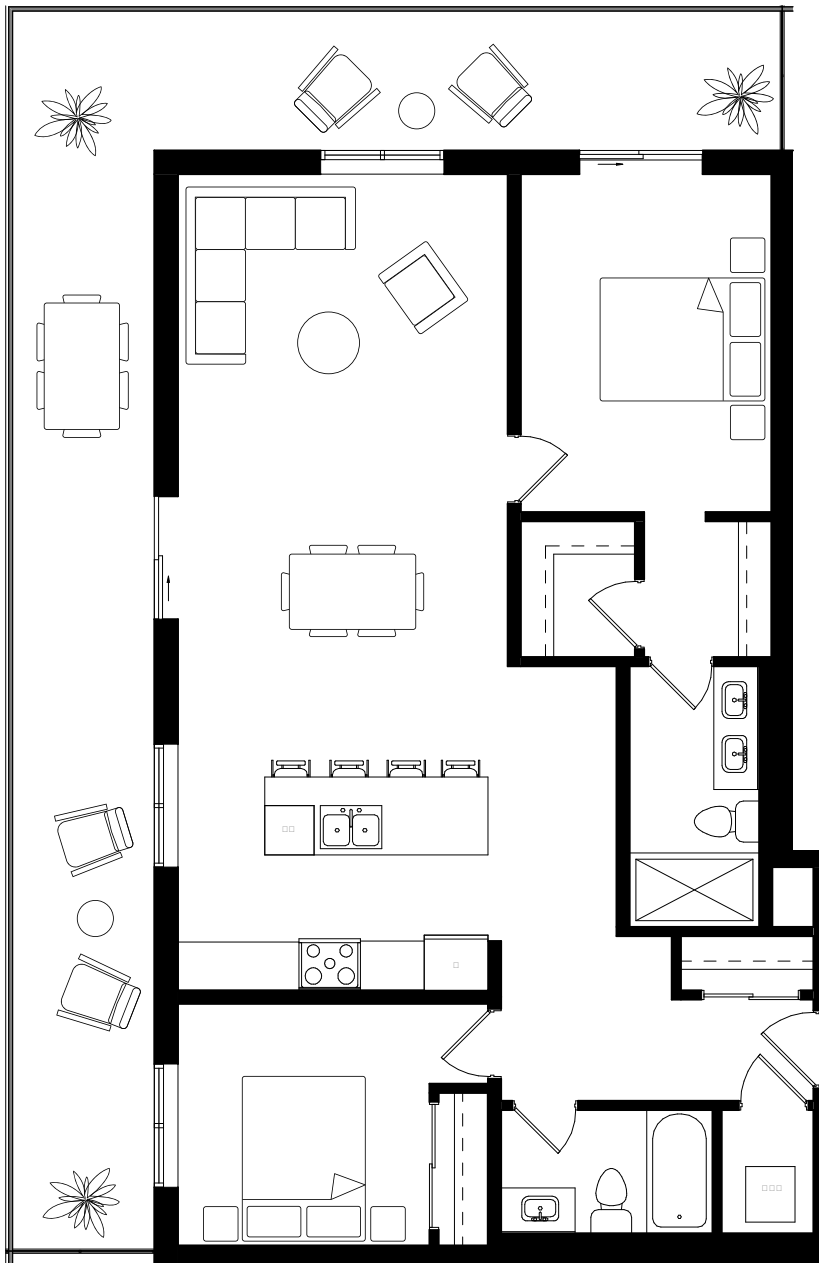
E. & O. E. This is not an offering for sale. Any such offering may only be made with a Disclosure Statement. The developer reserves the right to modify or change plans, specifications, features, materials and prices without notice and at the developer's sole discretion. While we strive for accuracy, all measurements are approximate and are based on the architectural plans. Renderings are conceptual and are intended as a general reference only.

SAVOY

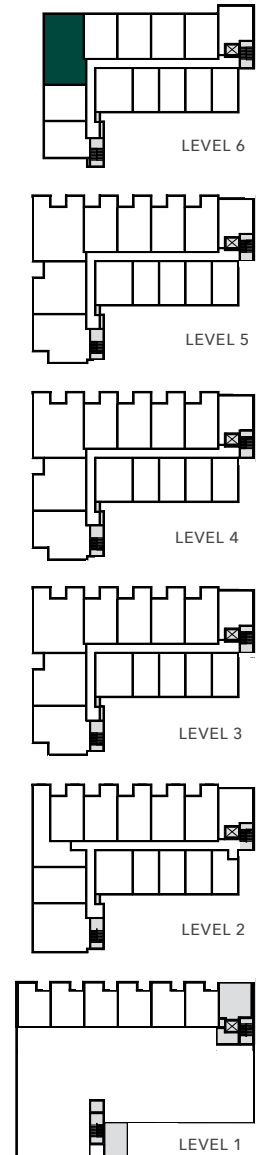
ON CLEMENT

PLAN D3

2 BED | 2 BATH
INTERIOR: 1,120 SF
EXTERIOR: 448 SF



CLEMENT AVE



LIVESAVOY.CA

☎ 236-338-1638 ✉ information@livesavoy.ca

Presentation Centre: Suite 103 - 810 Clement Ave, Kelowna

SALES AND MARKETING



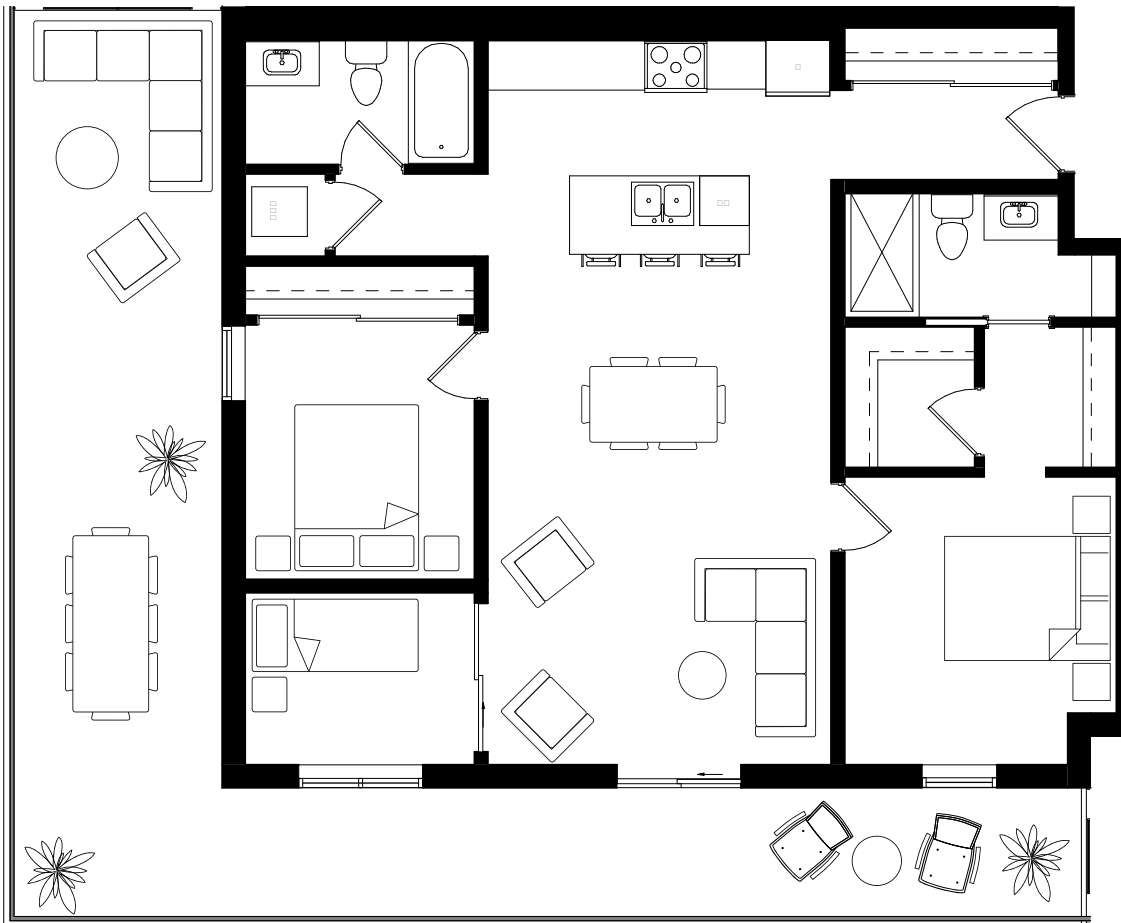
E. & O. E. This is not an offering for sale. Any such offering may only be made with a Disclosure Statement. The developer reserves the right to modify or change plans, specifications, features, materials and prices without notice and at the developer's sole discretion. While we strive for accuracy, all measurements are approximate and are based on the architectural plans. Renderings are conceptual and are intended as a general reference only.

SAVOY

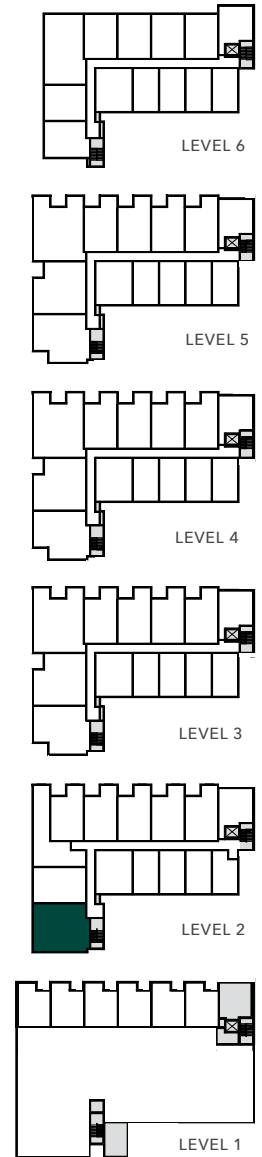
ON CLEMENT

PLAN E1

2 BED + DEN | 2 BATH
INTERIOR: 1,064 SF
EXTERIOR: 519 SF



CLEMENT AVE



LIVESAVOY.CA

☎ 236-338-1638 ✉ information@livesavoy.ca

Presentation Centre: Suite 103 - 810 Clement Ave, Kelowna

SALES AND MARKETING



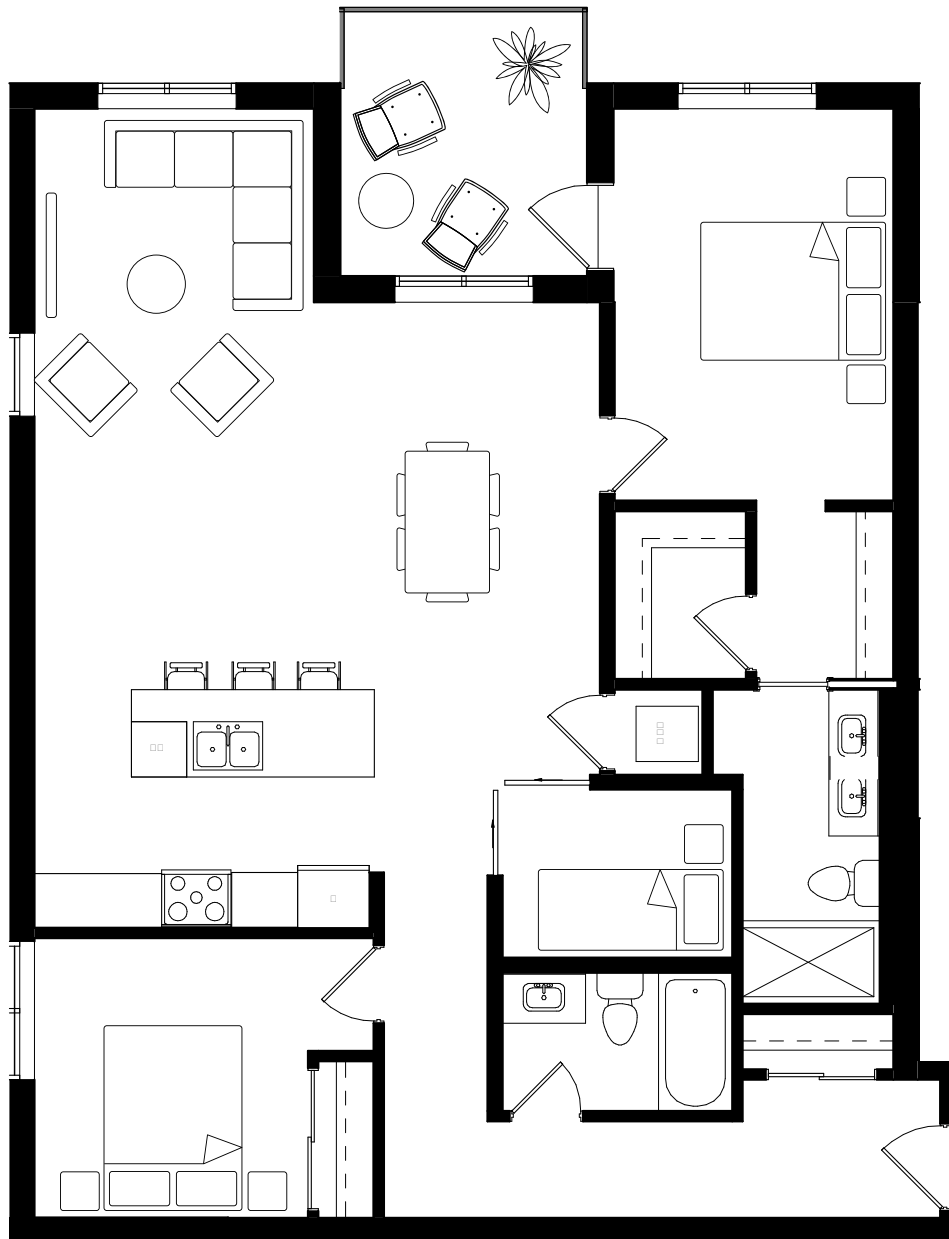
E. & O. E. This is not an offering for sale. Any such offering may only be made with a Disclosure Statement. The developer reserves the right to modify or change plans, specifications, features, materials and prices without notice and at the developer's sole discretion. While we strive for accuracy, all measurements are approximate and are based on the architectural plans. Renderings are conceptual and are intended as a general reference only.

SAVOY

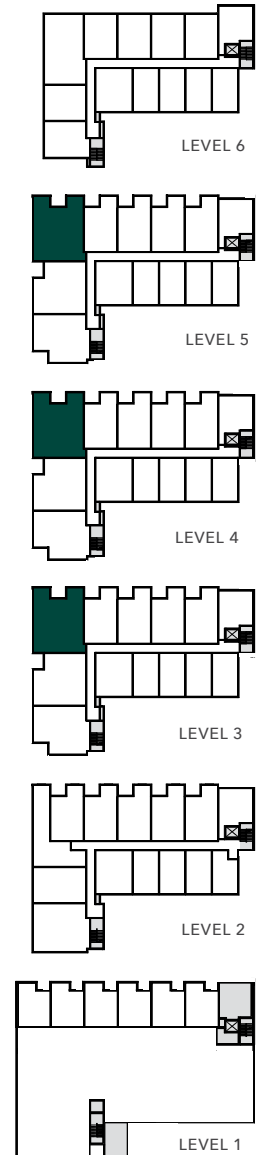
ON CLEMENT

PLAN E2

2 BED + DEN | 2 BATH
INTERIOR: 1,240 SF
EXTERIOR: 88 SF



CLEMENT AVE



LIVESAVOY.CA

☎ 236-338-1638 ✉ information@livesavoy.ca

Presentation Centre: Suite 103 - 810 Clement Ave, Kelowna

SALES AND MARKETING



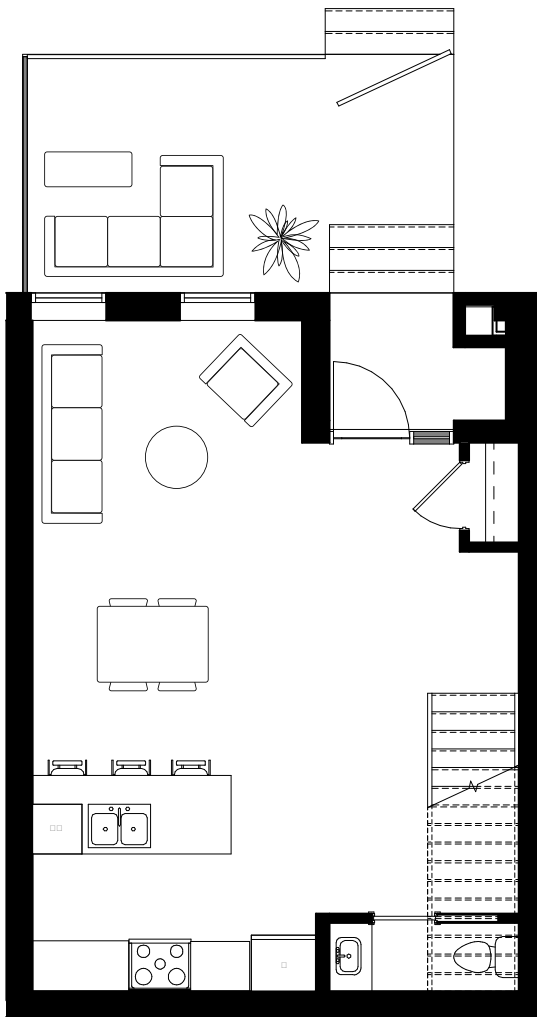
E. & O. E. This is not an offering for sale. Any such offering may only be made with a Disclosure Statement. The developer reserves the right to modify or change plans, specifications, features, materials and prices without notice and at the developer's sole discretion. While we strive for accuracy, all measurements are approximate and are based on the architectural plans. Renderings are conceptual and are intended as a general reference only.

SAVOY

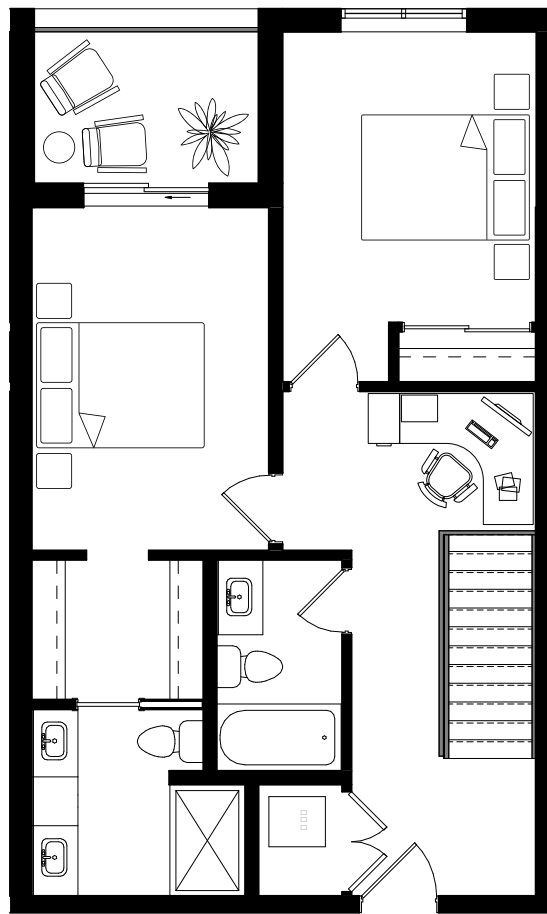
ON CLEMENT

PLAN T1

2 BED | 2.5 BATH
INTERIOR: 1,221 SF
EXTERIOR: 256 SF

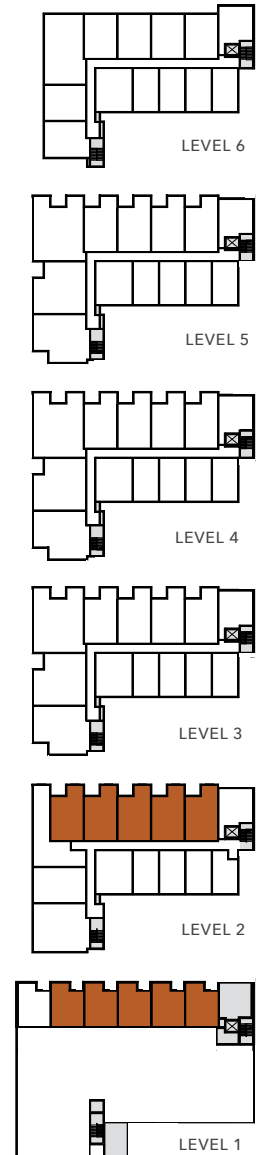


MAIN



UPPER

CLEMENT AVE



LIVESAVOY.CA

☎ 236-338-1638 ✉ information@livesavoy.ca

Presentation Centre: Suite 103 - 810 Clement Ave, Kelowna

SALES AND MARKETING



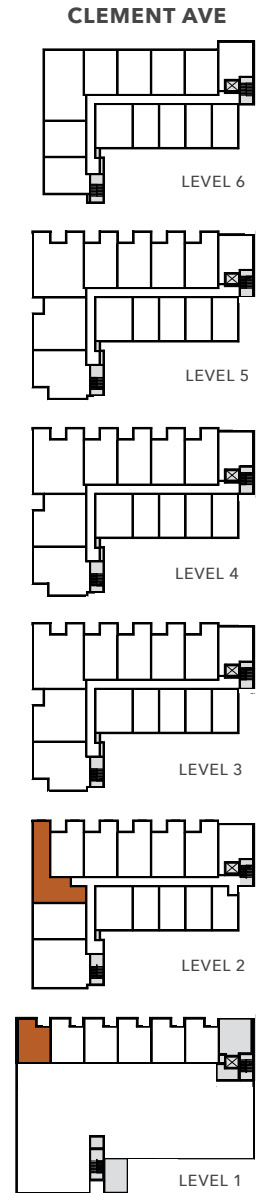
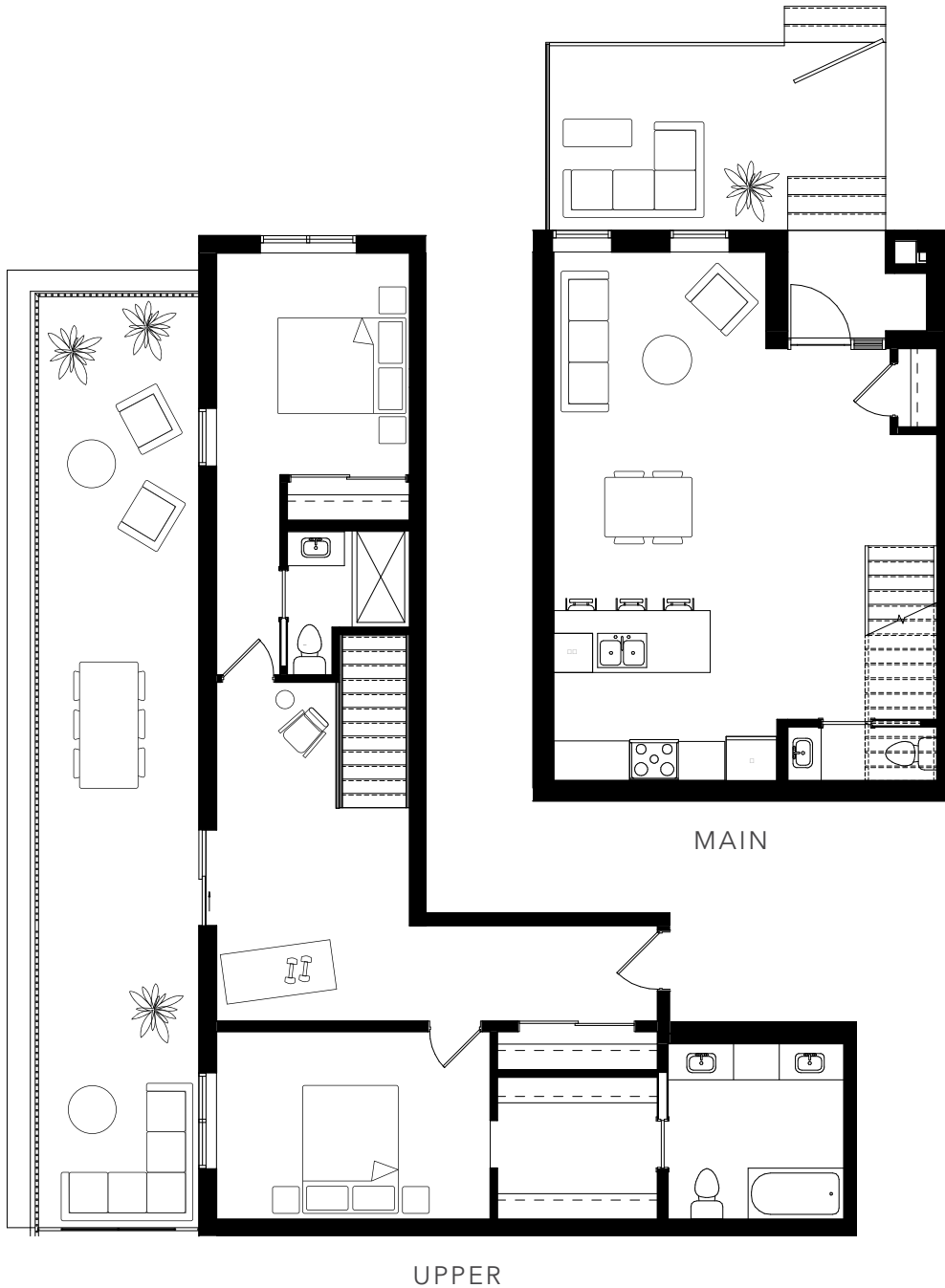
E. & O. E. This is not an offering for sale. Any such offering may only be made with a Disclosure Statement. The developer reserves the right to modify or change plans, specifications, features, materials and prices without notice and at the developer's sole discretion. While we strive for accuracy, all measurements are approximate and are based on the architectural plans. Renderings are conceptual and are intended as a general reference only.

SAVOY

ON CLEMENT

PLAN T2

2 BED | 2.5 BATH
INTERIOR: 1,435 SF
EXTERIOR: 632 SF



LIVESAVOY.CA

☎ 236-338-1638 ✉ information@livesavoy.ca

Presentation Centre: Suite 103 - 810 Clement Ave, Kelowna

SALES AND MARKETING



E. & O. E. This is not an offering for sale. Any such offering may only be made with a Disclosure Statement. The developer reserves the right to modify or change plans, specifications, features, materials and prices without notice and at the developer's sole discretion. While we strive for accuracy, all measurements are approximate and are based on the architectural plans. Renderings are conceptual and are intended as a general reference only.