

*Fully Furnished*



*Resort Style Living*

**SKI IN/SKI OUT, AT YOUR FRONT DOOR**



**RESORT STYLE LIVING FROM THE MID \$300'S**



*Welcome to*

# **BLACK FOREST RESIDENCES AT BIG WHITE, BRITISH COLUMBIA**

**BROUGHT TO YOU BY VITA RESORTS INC.**

Located at the base of Black Forest ski run you are literally skiing at one of Canada's Best Ski Resorts the moment you exit your premium residence.

A Black Forest Residence is completely furnished, appointed with premium finishes without compromise and all yours at a fraction of the cost associated with typical ski resort living.

Black Forest Residences; a multi season paradise and an investor's dream.

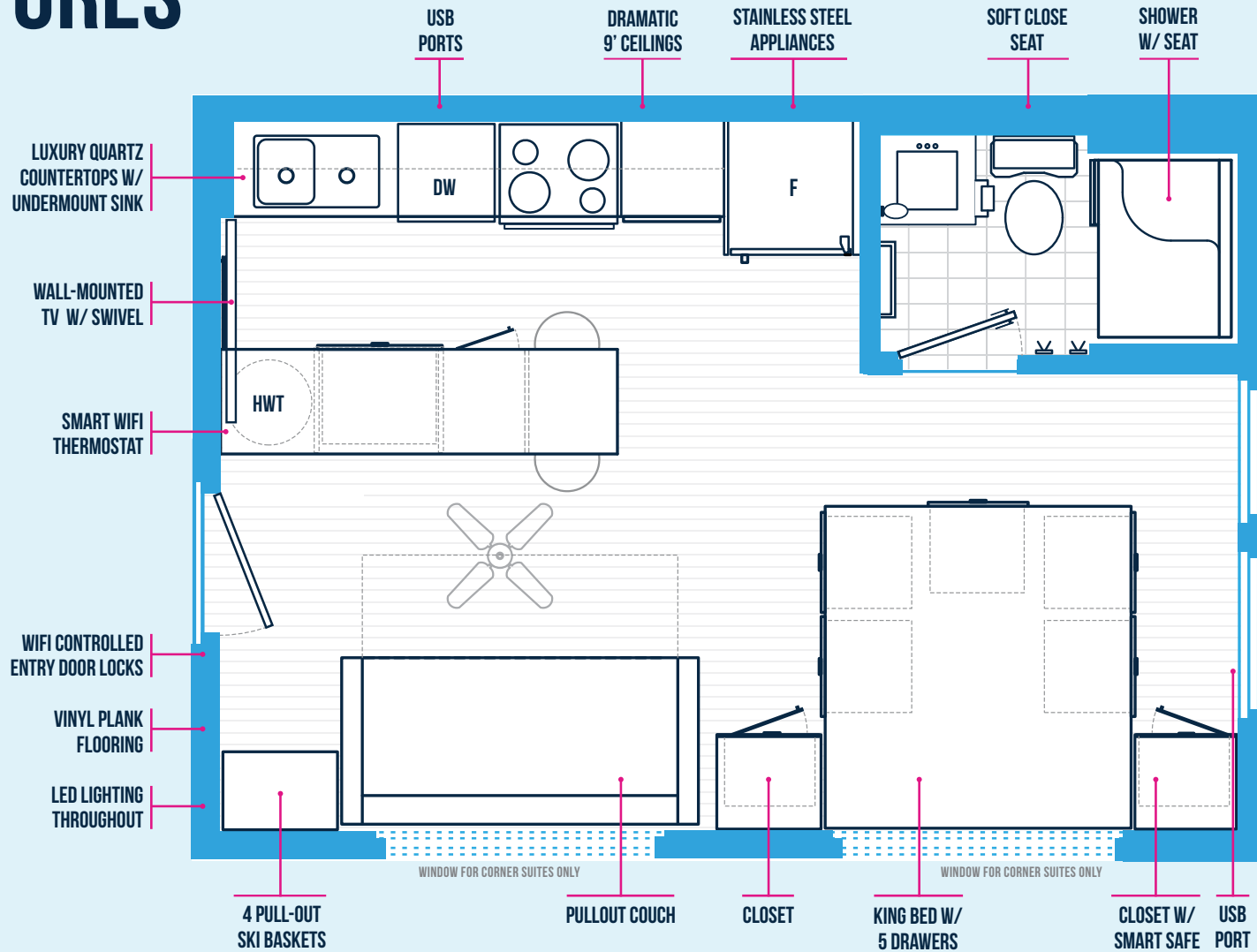
*Step into*  
**THE BLACK FOREST GRAND LOBBY**





The lobby features a two-storey, 22' entry with a grand guest services reception to assist you and your guests; a featured stone fireplace with seating area and a row of fridge/freezers for quick and convenient dining options.

# FLOOR PLAN & FEATURES



FULLY FURNISHED "SMART" SUITES



## *The Suites*

# COMFORTABLE & SMART LIVING

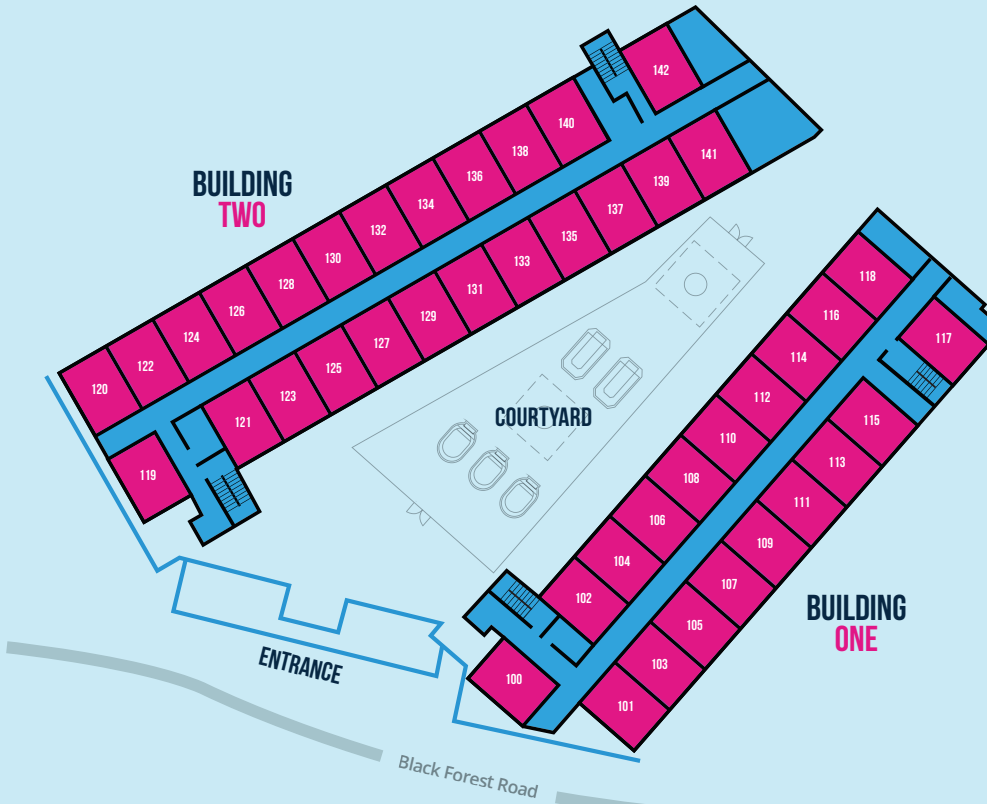
Black Forest suites offer stainless steel appliances, king size bed with under-bed storage compartments, double sized pull out sofa, large quartz countertop surface with eating area, maximum storage and window coverings. The suites are appointed with vinyl plank flooring, modern kitchen cabinetry, expansive windows and much more. You can also regulate the heating and suite opening right from your phone.



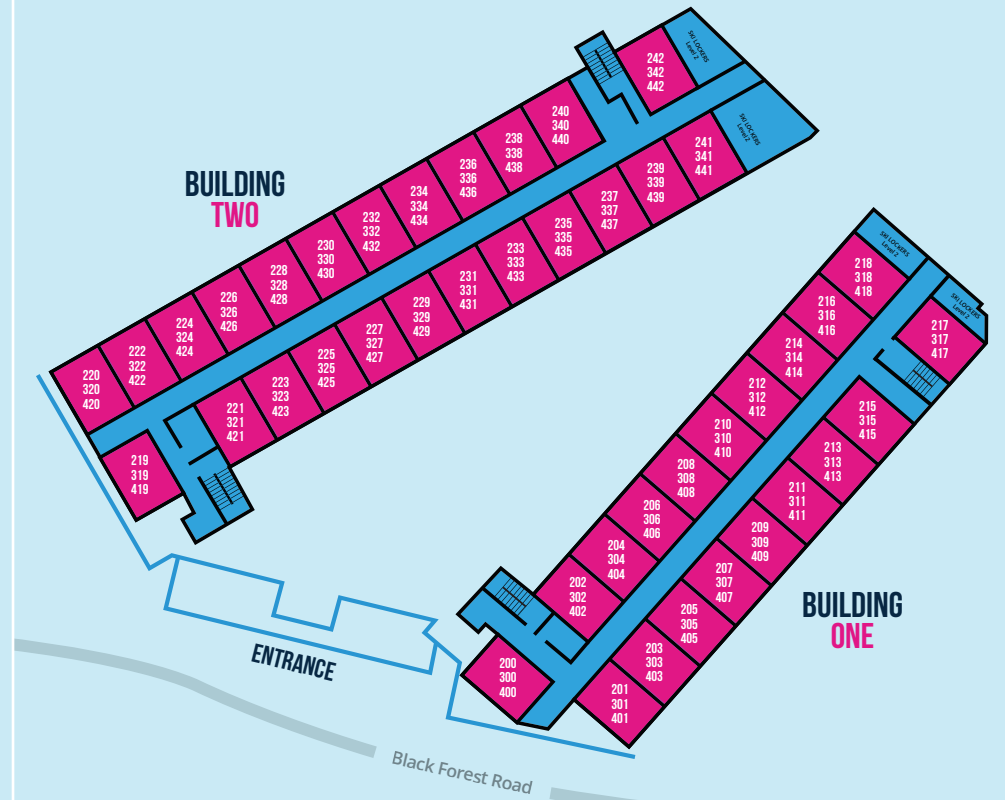


# BUILDING FLOOR PLATES

## LEVEL ONE



## LEVELS TWO - FOUR



**AT THE BASE OF THE BLACK FOREST SKI RUN**





# *The Building*

## 4 FLOORS OF COMFORT AND SECURITY

Black Forest Residences provides the opportunity to experience the Okanagan and Big White lifestyle in “smart” designed and efficient floor plan at incredible prices.

### HERE ARE JUST SOME OF THE BUILDING FEATURES AT BLACK FOREST RESIDENCES

- Ski In/Ski Out with Black Forest chair Lift Right at Your Front Door
- Black Forest Lodge Access
- Secured Building
- High Speed Wireless Internet
- Convenient Ski Storage Lockers
- Community Bike Storage
- Grand Lobby Entrance
- Convenient Laundry Facilities on Each Level
- Community Heated Courtyard with Hot Tubs and Fireplaces
- Secured Underground Parking
- Access to Exclusive and Convenient Food Services



**VOTED 2ND  
BEST SKI  
RESORT IN  
CANADA**

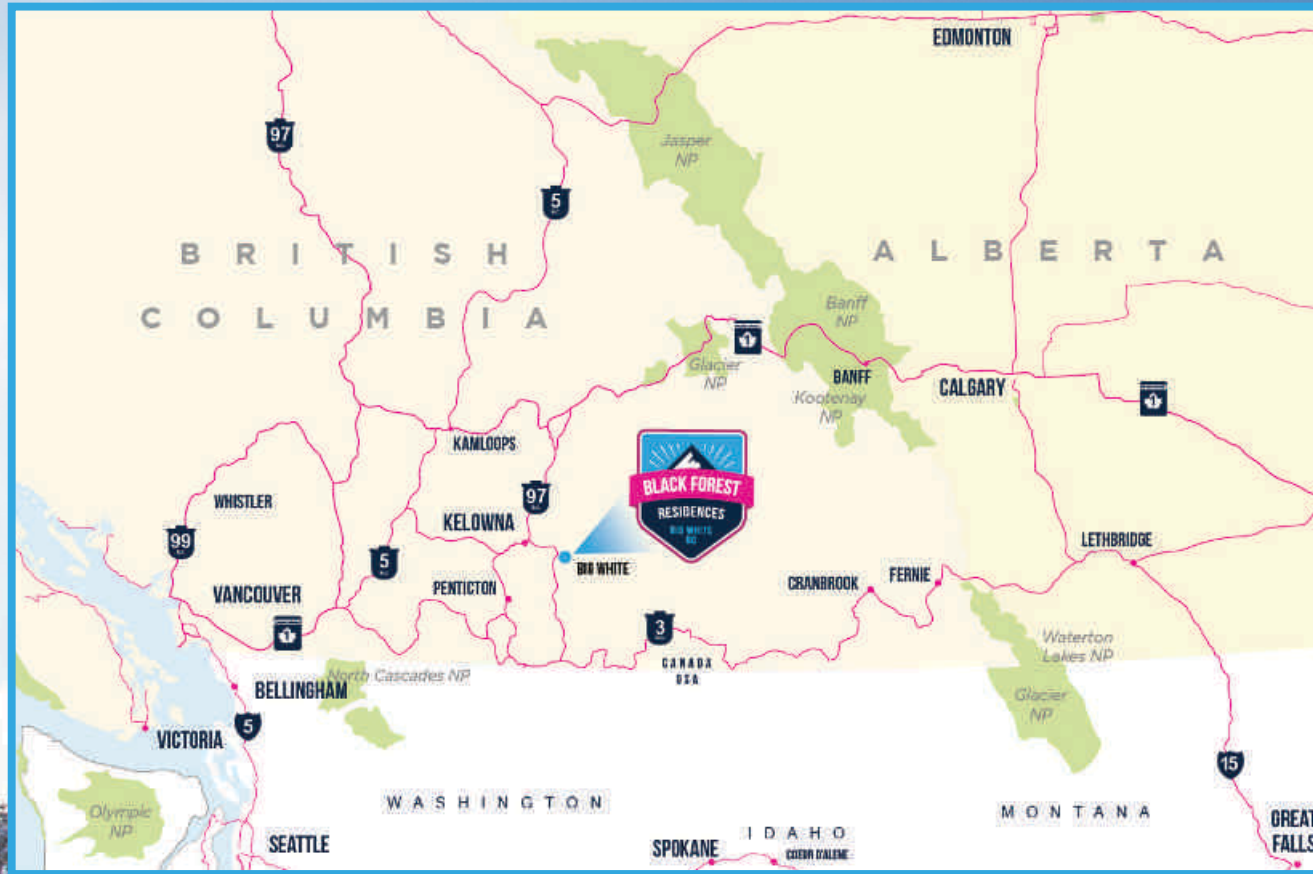
**SKI. SLED. SKATE. CLIMB. BIKE. RELAX.  
DISCOVER. HIKE. SNOWSHOE. REPEAT.**



# *Experience the* **BIG WHITE LIFESTYLE**

Canada's largest full ski-in/ski-out village is just 45 minutes from Kelowna International Airport and 60 minutes from Downtown Kelowna. Once you arrive, every amenity and experience you desire is a short ski away, from nearly 20 on-mountain restaurants and bars to ice skating and snowmobiling.





**CONVENIENTLY LOCATED & ACCESSIBLE  
ONE HOUR OUTSIDE OF KELOWNA, B.C.**



*Ideally situated*

# BLACK FOREST, BIG WHITE, B.C.

Black Forest, arguably the most popular ski run at Big White, is right out your front doorstep. Just put on your skis get on the lift to catch the first run of the day. Black Forest also has a new day lodge for a well earned break to enjoy that hot chocolate or even stay for lunch. Once on the hill, you have direct access to the Central Village and all the amenities that Big White has to offer.





*Enjoy*

## **NO RENTAL RESTRICTIONS**

It is completely your choice to live-in, rent out yourself, airbnb, vrbo, or use the convenient Big White Central Reservations service.

**A MULTI SEASON PARADISE AND  
INVESTOR'S DREAM**



*Easy living*  
**ESSENTIALS**  
**PACKAGE**

**DINNERWARE**

- Coffee Mugs x4
- Dinnerware Set (16 piece) x1

**FLATWARE**

- Cutlery Set x4
- Knife Block Set x1

**GLASSWARE**

- Wine Glasses x4
- Plastic Water Glasses x4

**COOKWARE**

- Cookware Set x1
- Rice Cooker x1

**COOKING ACCESSORIES**

- Casserole x1
- Cutting Board x1

**SMALL APPLIANCES**

- Coffee Maker x1
- Toaster (2 Slice) x1
- Blender (Multi-Speed) x1
- Kettle (Stove-top) x1

**GENERAL**

- TV Tray x2

**KITCHEN ACCESSORIES**

- Can Opener (Hand-Held) x1
- Spatula (Non-Stain) x1
- Ladle x1
- Wooden Spoon x1
- Pancake/Egg Flipper x1
- Wire Wisk (Heavy Duty) x1
- Vegetable Peeler x1
- Garlic Press x1
- Cork Screw x1
- Salt and Pepper Shakers x1
- Paper Towel Holder x1
- Under-Sink Waste Basket x1
- Plastic Pitcher x1
- Place Mats (Vinyl) x4
- Oven Mitts x2
- Tongs x1
- Kitchen Rack & Drain Tray x1
- Strainer x1
- Ice Cube Trays x2
- Wooden Hangers x4
- Frying Pan x1
- Dish Towel x2
- Dish Cloths x2
- Expandable Cutlery Tray x1
- Tea Pot x1

**CLEANING & UTILITY**

- Broom x1
- Dust Pan x1
- Toilet Plunger x1

**BATHROOM**

- Soap Dish x1
- Waste Basket x1

**TOWEL SET**

- Bath Towels x2
- Hand Towels x2
- Washcloths x2

**BASIC BEDDING**

- King Flat Sheet x2
- King Fitted Sheet x2
- King Pillows x2
- King Pillow Cases x4
- King Size Comforter Set x1
- Decorative Pillows x4
- Double Flat Sheet x1
- Double Fitted Sheet x1
- Double Pillows x2
- Double Pillow Cases x2
- Throw Blanket x1

*The builder reserves the right to make modifications or changes without notice.*

**INCLUDED WITH EVERY "SMART" SUITE**



*Be first in line*

**REGISTER TODAY - [OWNVITA.COM](http://OWNVITA.COM)**

# SALES INQUIRIES

Watch for Black Forest Residences updates on our website. Your registration will ensure first priority for purchasing opportunity scheduled for early this year.

**PATTI DORIN - SALES ADVISER**

[patti@ownvita.com](mailto:patti@ownvita.com)

236-970-1105 (phone/text)

Please see the disclosure statement for specific offerings. E.&O.E. In a continuing effort to meet consumer expectations the builder reserves the right to make modifications or changes without notice.

**START AND END YOUR SKI DAY, RIGHT HERE.**