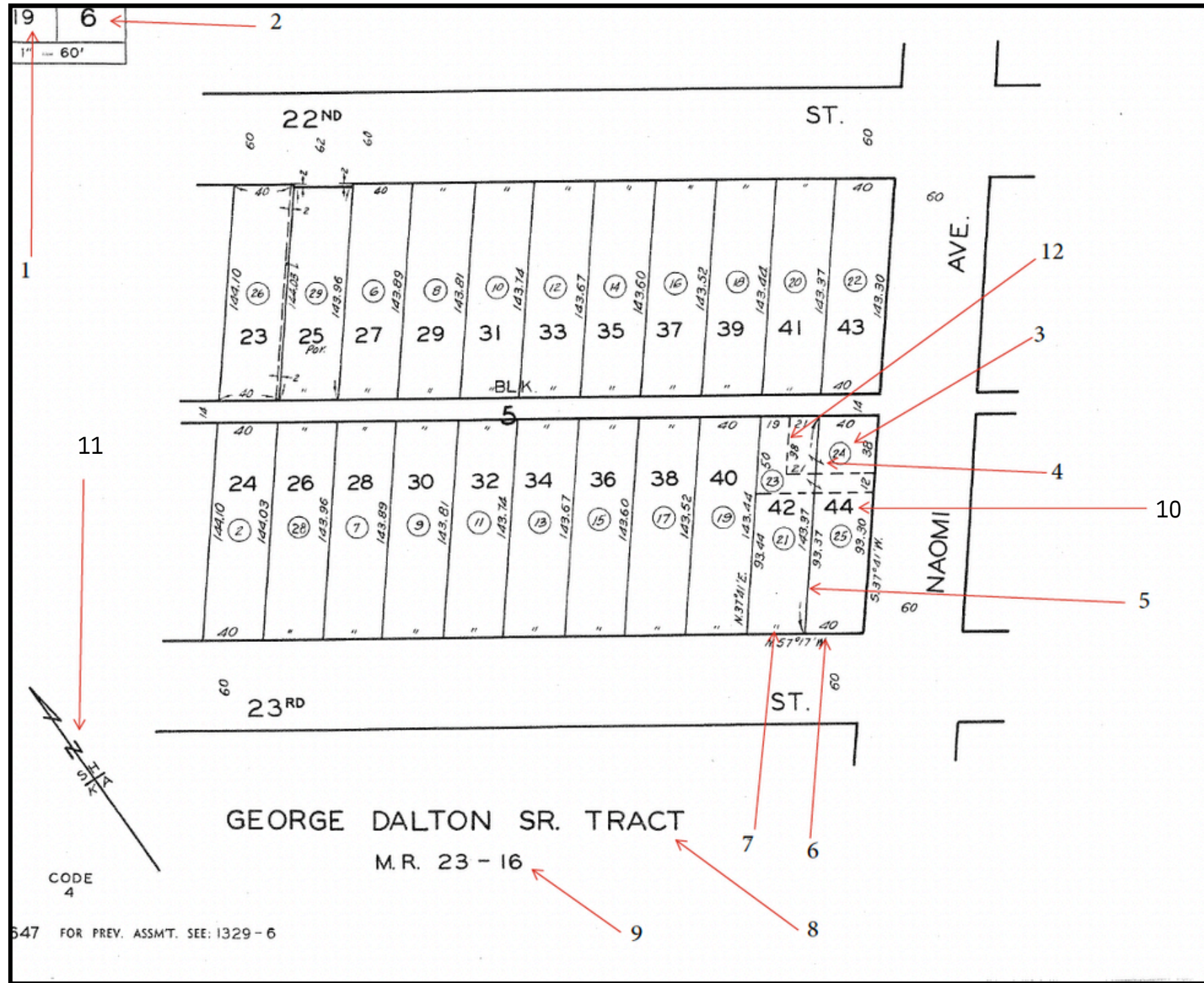


# HOW TO READ A PLAT MAP



- 1 Assessor book number
- 2 Assessor page number
- 3 Assessor parcel number – circled number indicates tax parcel number
- 4 Lot tie – indicates lot line adjustment or lot created by deed
- 5 Lot line – solid line indicates original lot line
- 6 Approximate lot dimensions
- 7 Ditto mark – indicates lot dimensions repeat and are equal to adjacent lot
- 8 Tract name (or number)
- 9 Book and page of official map
- 10 Recorded legal lot number
- 11 Compass – direction indicator
- 12 Dashed line indicates lot line adjustment or lot created by way of deed rather than official tract/parcel map or survey.

*The Assessor's Map is not filed with the official County's Records. This map is based upon tract maps that are filed with the local County records. The Assessor will include a reference to the maps that have been filed at the County.*