

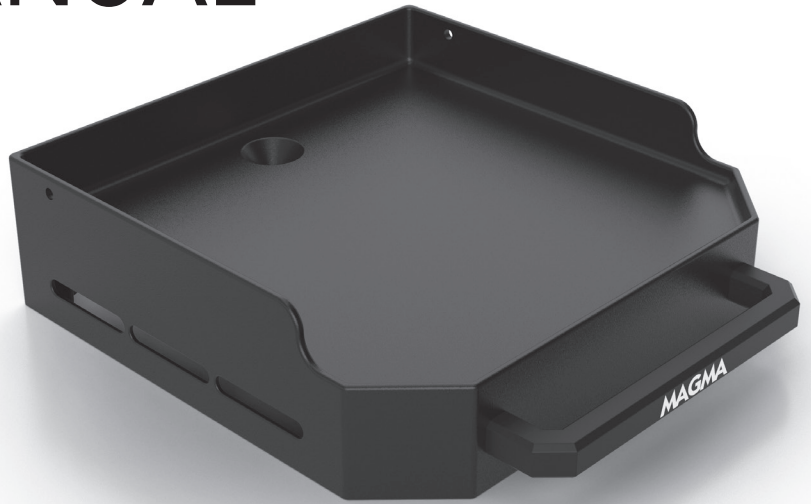
MAGMA®

OWNER'S MANUAL

CROSSOVER SERIES

GRIDDLE TOP

CO10-104



COMPONENT PARTS & INSTALLATION

To install any cooking component, simply place it into the Firebox until it is snug on the box.

**ALL COMPONENTS
SOLD SEPARATELY. VISIT
MAGMAPRODUCTS.COM
TO PURCHASE
ADDITIONAL ITEMS**

**NOTE: This product REQUIRES
the use of a single or double
burner Firebox to provide the
source of heat.**



IMPORTANT SAFETY INFORMATION

READ ALL INSTRUCTIONS BEFORE OPERATING

IF YOU SMELL GAS

1. Disconnect gas to the appliance.
2. Extinguish any open flame.
3. If odor continues, immediately leave the premises and call your gas supplier or local fire department.

FOR OUTDOOR USE ONLY

If stored indoors, detach hoses and leave fuel cylinder outdoors, with valve closed and plugged.

FUEL TYPE

This unit is designed for use with propane only. No other fuel is approved for use with this unit. For Natural Gas application, contact Magma.

FUEL CYLINDER

Always store fuel bottles in a safe outdoor area with valve closed and plugged. Follow the manufacturer's recommendation for proper use and storage of propane cylinders. Do Not Place Propane Cylinders Directly Under Any Part of the Burners.

FOR YOUR SAFETY

Follow all safety, set-up, lighting and cooking instructions. Do not store or use gasoline or other flammable vapors and liquids in the vicinity of this or any other appliance.

CARBON MONOXIDE HAZARD

This appliance can produce carbon monoxide which has no odor. Using it in an enclosed space can kill you. Never use this appliance in an enclosed space such as a camper, tent, car or home.

PROP 65

WARNING: This product can expose you to chemicals including Chromium (hexavalent compounds), which are known to the State of California to cause cancer and birth defects or other reproductive harm. For more information go to: www.p65Warnings.ca.gov



PRODUCT REGISTRATION

Register your product today for support.

Visit magmaproducts.com/pages/submit-your-product-registration or scan the QR code.

LIMITED WARRANTY

Magma Products, LLC guarantees this product to be free from defects in materials or workmanship to the original consumer. This guarantee is for the periods herein specified when used under normal and reasonable conditions, one (1) year from the date of original purchase. This warranty does not include the cost of property damage or any inconvenience due to the failure of the product. Nor does it cover damage due to misuse, abuse, accident, or damage resulting from transportation of the product. Nor does it include damage resulting from the commercial use of this product. Nor does it include, on stainless steel products, "Surface Rust"; Excessive Corrosion due to exposure to salt water; or Discoloration or Corrosion caused by exposure to excessive heat or failure to properly clean and care for the stainless steel surfaces.

If the product fails to operate due to a defect in materials or workmanship during the warranty period, the defective part will be repaired or replaced at Magma's option. If you wish to obtain performance under this limited warranty, contact Magma's Customer Service Department via telephone at (562) 627- 0500, or via e-mail at mail@MagmaProducts.com, or via U.S. Postal Service mail at "Magma Products, LLC, Attention Customer Service, 3940 Pixie Ave. Lakewood, CA, 90712". The defective part, along with proof of purchase, must be returned postage prepaid to Magma Products, LLC. We suggest that you keep your purchase receipt as we may require reasonable proof of purchase.

In the state of California only, if refinishing or replacement of the product is not commercially practicable, the retailer selling the product, or Magma Products, LLC, will refund the purchase price paid for the product, less the amount directly attributable to use by the original consumer prior to the discovery of the nonconformity. In addition, in the state of California only, you may take the product to the retail establishment from which it was purchased or to any retail establishment selling this product in order to obtain performance under this warranty. All implied warranties, including the implied warranties of merchantability and fitness for a particular purpose, are limited in duration to the express warranty periods specified herein for the parts described herein. Some states do not allow limitations on how long an implied warranty lasts, so the above limitation may not apply to you. Neither Magma dealers, nor the retail establishment selling this product has any authority to make any warranties or to promise remedies in addition to or inconsistent with those stated above. Magma's maximum liability shall not exceed the purchase price of the product paid by the original consumer. Some states do not allow the exclusion or limitation of incidental or consequential damages, so the above limitation or exclusions may not apply to you. The warranty gives you specific legal rights and you may also have other rights which vary from state to state.

MAGMA and the Magma logo are registered trademarks of Magma Products, LLC

MAGMA®

Magma Products, LLC

3940 Pixie Avenue, Lakewood, CA 90712 USA | 562-627-0500 | mail@magmaproducts.com | magmaproducts.com