

MAGMA[®]

OWNER'S MANUAL

Fasteners Included:

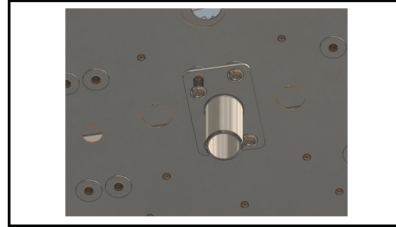
4 - 1/4-20 Button Socket Cap Screws
4 - Washers
4 - 1/4-20 Carriage Bolts
4 - Hex Nuts
L-Wrench

T10-348-2 QUAD POD MOUNT

T10-348-2 Quad Pod Mount Manuel du produit/Guide d'installation



1 – Align the bracket with four (4) fasteners to the hole pattern on the bottom center of the Firebox or Grill.



2 – Secure the fasteners and bracket to the Firebox or Grill.



3 – Open legs of quad pod stand, until fully extended. Ensure stand is level and secure. Push down on top to confirm legs are fully extended.



4 – Align grill box with stand and lower onto mount ensuring it is fully engaged. Rotate grill to desired position and lock with wing nut.



5 – Before turning on gas or lighting, ensure grill is level and secure. Using on uneven or unstable ground can be dangerous.



6 – To pack up, follow same procedure and leave bracket on grill as it will not interfere with tabletop use.

MAGMA[®]

Magma Products, LLC
1774 Pan American Street, Suite 100,
Calexico, CA 92231 USA | 562-627-0500
mail@magmaproducts.com
magmaproducts.com