

Assembly, Installation, Care & Use Instructions

R10-1004-59

Wall mounted Kayak/SUP Storage Rack

CONTENTS

A – (2) – 1-1/2" x 61" Stainless Steel Tubing Vertical Stanchions

B – (4) – Wall Mounting Bracket Assembly

C – (2) – Stainless Steel Vertical Stanchion Locking Bracket

**Additional mounting fasteners required
for complete installation**

TOOLS REQUIRED

- 1/4" Hex key wrench
- 5/32" Hex key wrench
- 7/16" Wrench

**Additional tools required
for complete installation**

ASSEMBLY & INSTALLATION

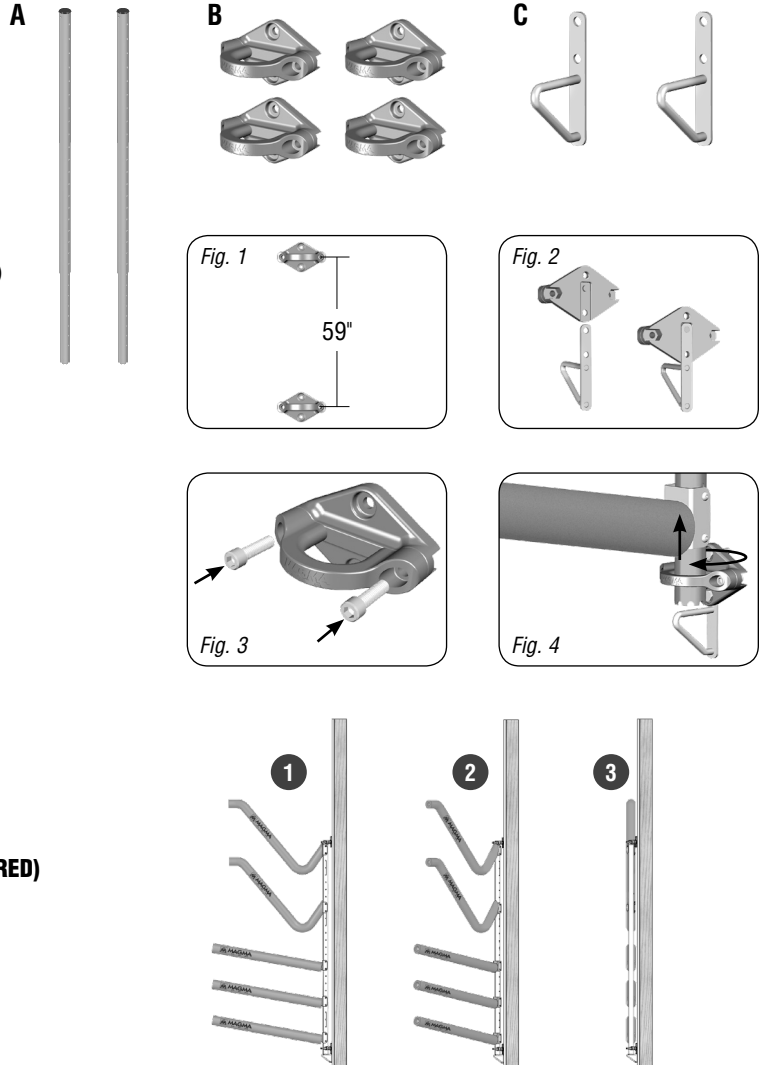
- Determine rack's desired location and width apart
- Using a stud finder (if necessary), locate wall studs
- Bottom of lower mounting bracket require a minimum of 2-1/2 inches from floor/deck surface to accommodate stanchion locking brackets
- Ensure lower mounting bracket locations are parallel with floor/deck
- Align lower mounting brackets with wall studs and mark each bracket's (2) attachment holes
- Mount upper and lower wall brackets 59 inches apart on center (see Fig. 1)
- Vertically align upper and lower brackets
- Mark each upper bracket's (2) attachment hole
- Drill (8) small pilot holes or required hole size for inserting wall anchors (not included)
- Install wall anchors, if necessary (not included)
- Insert stanchion locking bracket into back of mounting bracket, making sure securing tab is inserted (see Fig. 2)
- Using required installation fasteners (not included) securely attach each mounting bracket to wall
- Insert vertical stanchion (capped end) through upper mounting bracket and lower through lower bracket until notched end of tube rests securely on stanchion locking bracket
- Repeat process for 2nd vertical stanchion
- Using a 1/4" hex key wrench securely tighten wall mounting bracket's assembly fasteners (see Fig. 3)
- Repeat for all (4) bracket's
- Magma's optional SUP arms, 30-inch, or 36-inch straight arms or any combination of both can be attached to vertical stanchions (see rack arm attachment instructions for installation)

SECURING EQUIPMENT TO RACK (SECURING TIE-DOWN STRAPS' REQUIRED)

- Attach tie-down strap to rack's arm connection at vertical stanchion, extend over equipment and attach straps' hook to arms tie-down point

CARE & USE

- Adjustable rack design allows arms to fold flat when not in use; simply lift vertical stanchion to disengage locking bracket and rotate 90° (see Fig. 4)
- Kayak's and SUP's should be secured to rack when not in use
- Periodically remove rack from bracket's and wash environmentally-friendly soap, fresh water, and a clean cloth to remove any debris, wipe dry
- Water toys should always be rinsed with fresh water before storing



*Easily fold arms towards the wall when not in use.
Shown with Magma's optional SUP and Straight Arms (Sold Separately)*

LIMITED WARRANTY

ORIGINAL PROOF OF PURCHASE REQUIRED FOR ALL WARRANTY CLAIMS

Magma Products, Inc. guarantees this product to be free from defects in materials and workmanship for 1 year from the date of purchase to the original consumer. This guarantee is for the periods herein specified when used under normal and reasonable conditions in a non-commercial or non-institutional environment.

CONDITIONS OF WARRANTY

This warranty does not include the cost of property damage or any inconvenience due to failure of the product. Nor does it cover damage due to misuse, abuse, accident, or damage resulting from transportation of this product. Nor does it include damage resulting from commercial / industrial use of this product. If the product fails to function due to a defect in materials or workmanship during the warranty period, the defective part will be repaired or replaced at Magma's option. If you wish to obtain performance under this limited warranty, you should contact Magma's Customer Service Department via telephone at 562-627-0500, e-mail at mail@magma-products.com, or U.S. Postal Service Mail at "Magma Products, Inc., Attention Customer Service, 3940 Pixie Ave., Lakewood, CA 90712 U.S.A." The defective part, along with proof of purchase, must be returned postage prepaid to Magma Products, Inc.

In the state of California only, if refinishing or replacement is not commercially practicable, the retailer selling the product, or Magma Products, Inc., will refund the purchase price paid for the product, less the amount directly attributable to use by the original consumer prior to the discovery of the nonconformity. In addition, in the state of California only, you may take the product to the retail establishment from which it was purchased or to any retail establishment selling this product in order to obtain performance under this warranty.

ALL IMPLIED WARRANTIES, INCLUDING THE IMPLIED WARRANTIES OF MERCHANTABILITY AND FITNESS FOR A PARTICULAR PURPOSE, ARE LIMITED IN DURATION TO THE EXPRESS WARRANTY PERIODS SPECIFIED HEREIN FOR THE PARTS DESCRIBED HEREIN.

Some states do not allow limitations on how long an implied warranty lasts. So the above limitation may not apply to you. Neither Magma dealers, nor the retail establishment selling this product has any authority to make any warranties or to promise remedies in addition to or inconsistent with those stated above. Magma's maximum liability shall not exceed the purchase price of the product paid by the original consumer. Some states do not allow the exclusion or limitation of incidental or consequential damages, so the above limitations or exclusions may not apply to you. The warranty gives you specific legal rights and you may also have other.



MAGMA PRODUCTS, INC. • 3940 Pixie Ave. • Lakewood, CA 90712 • USA • Tel: (562) 627-0500
MagmaProducts.com • mail@MagmaProducts.com