



# Regulations Refresher

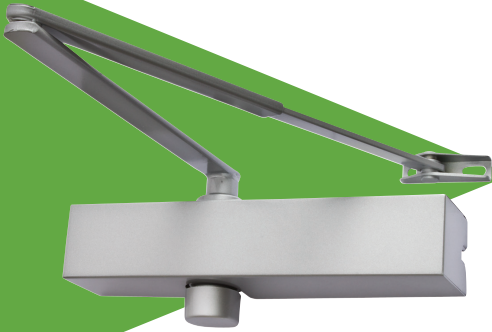


2021

Containing all the information you need for ensuring your building meets the standards required for full accessibility.

In this ever changing market with regulations being continuously updated, we thought we'd give you a quick refresher on the British Standard 8300. We've highlighted the most important requirements for our most frequently purchased products by you.

## Here are our highlights



### **BS 8300 means a door closer must:**

Produce a maximum 30N opening force when measured at 0° (closed) and 22.5N when measured between 30° and 60° (open). Backcheck closers should not operate before 80° (open) and the maximum closing force should not occur between 0° and 15° of the final closing.

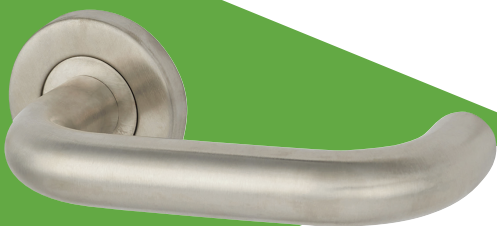
The ideal requirement would have fully adjustable power between 2-4, and an efficiency rating of 65% +.

Ideally to be used in conjunction with low friction hinges, low bolt resistance on locks (if fitted), and also take into consideration any differentials in air pressure and natural air flow.

### **BS 8300 means a pull handle must:**

Have a minimum 45mm protrusion away from the door, 19mm to 35mm diameter, at least 300mm length and have a hand grip zone of at least 95mm. The upper fixing should be a minimum of 1400mm above floor level.

A horizontal installation, fitted with a cover rose or trim, contrast visually with the face of the door by 15 points, and if installed on external doors, should have a visual contrast to their surroundings.



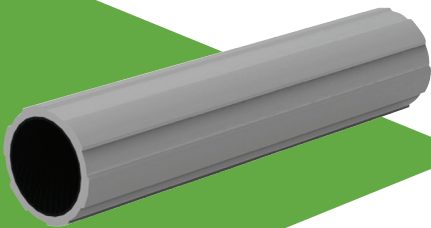
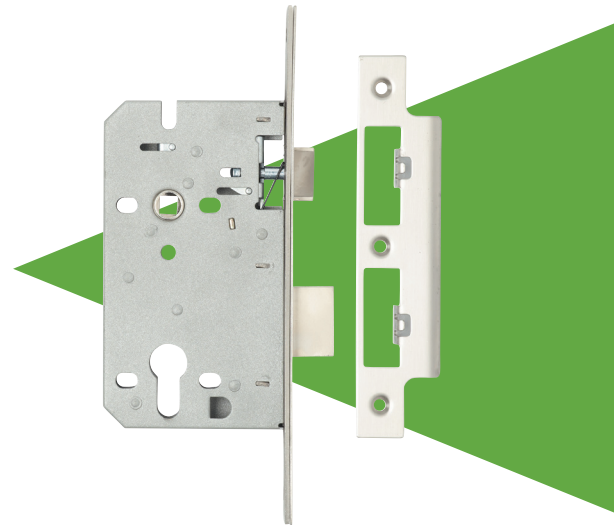
### **BS 8300 requires a door handle lever to:**

Lever type to be 'return to door' with no sharp edges or immediate changes of direction. Securely fixed to door by bolt-through fixings and with minimum dimensions

Essential Dimensions: 95mm inside (between shank & return), 45mm projection from door (excluding roses) and a 19 – 35mm diameter.

**BS 8300 Requires all lock cases to have:**  
72mm centres (or the cylinder should be fitted above the lever handle) and a backset of at least 54mm.

Latches should perform better than the lowest resistance class of BS EN 12209 (15N).



**BS 8300 requires rails to be:**

Easy and comfortable to grip with no sharp edges, smooth and NOT cold to touch.

A clearance of between 50 and 60mm between the handrail and the adjacent wall surface.

### Handrails and Grabrails

DOC M refers to the drop-down rails and grab bars installed throughout the room for extra security and grip when moving around. The toilet should be positioned away from the corner of the room and the drop-down rails should be installed either side to support the user.



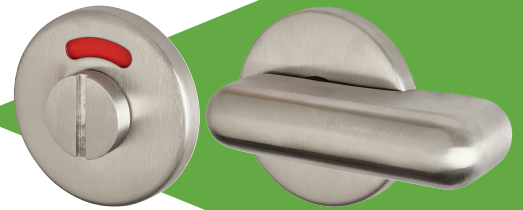


## Other products you might like



### **RADAR Lockset**

Only genuine RADAR keys unlock these specially fitted locks. Available to disabled and registered blind people, it offers key holders independent access to 14,000+ public toilets across the UK.



### **Turn and Release**

For bathroom and privacy functions, the release turn should be large enough to be able to operate easily.



### **Door Signs**

Make areas easily identifiable with our full range of door signage.

### **Related Products - Kick Plates**

Adding kickplates to any door will protect against wear and tear when frequently used, and can make them more aesthetically pleasing.



# ABOUT



We are the UK's largest supplier of specialist ironmongery, and have been supplying to the trade for over 50 years.

Starting out as a traditional hardware shop, we have since expanded to now providing over 18,000 quality products in stock, ready for next day delivery, as standard. Customers can order via our website, call centre and trade counter in Basildon, Essex.

Since 2013 we have been part of the Manutan Group, a leader in the supply of industrial, commercial and office equipment to business. We are a group of 25 subsidiaries across 18 countries who work closely together to be able to offer the highest quality products at low prices.

We are proud to have been named one of the UK's Best Workplaces™ 2021, in a report compiled by Great Place to Work®.

The Best Workplaces™ Award celebrates the companies that promote a healthy workplace culture through a combination of factors including employee trust, pride and camaraderie. To be recognised as one of the UK's Best Workplaces is a huge achievement and is testament to our dedication to create a healthy workplace culture where our employees feel trusted, valued and loyal to achieving organisational goals.

We are committed to driving our business performance through our biggest asset: our people, and we believe that the value and pride our employees place on working at IronmongeryDirect will ultimately be reflected in the customer experience.



**“It all comes down to our passion for customers, and making sure that they get the service and the product that they want”**

A handwritten signature in black ink that reads "Verdonkschot".

Marco Verdonkschot,  
Managing Director

[marcov@ironmongerydirect.com](mailto:marcov@ironmongerydirect.com)

At **IronmongeryDirect** we have a wide range of items available to meet BS 8300 regulations among the products we have in stock.

To find out more visit [www.IronmongeryDirect.co.uk](http://www.IronmongeryDirect.co.uk)



Call: **0808 168 2828**

Email: [sales@ironmongerydirect.co.uk](mailto:sales@ironmongerydirect.co.uk)