



300 East 23rd Street

Southeast corner of Second Avenue

Gramercy/Peter Cooper Village Area Retail Opportunity



Former Duane Reade Available for Sublease

Space

Ground Floor: 6,078 sf

Lower Level: 5,067 sf

Total: 11,145 sf

Frontage

100 feet

Possession

Immediate

Term

Through 3/1/2023

Asking Rent

\$300,000 p.a. gross

Neighbors



Demographics

Radius	'19 Pop	Total HH	Avg. HHI
.25 Mile	25,046	13,550	\$157,751
.5 Mile	76,049	40,569	\$162,343
.75 Mile	151,236	80,882	\$169,336

Former Duane Reade store #14496

Michael Riley

+1 212 812 5901

Michael.Riley@jll.com

Patrick A. Smith

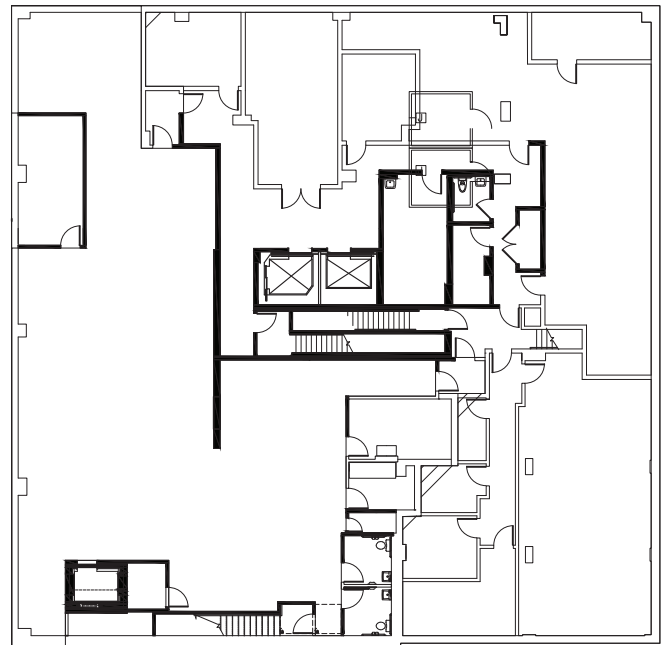
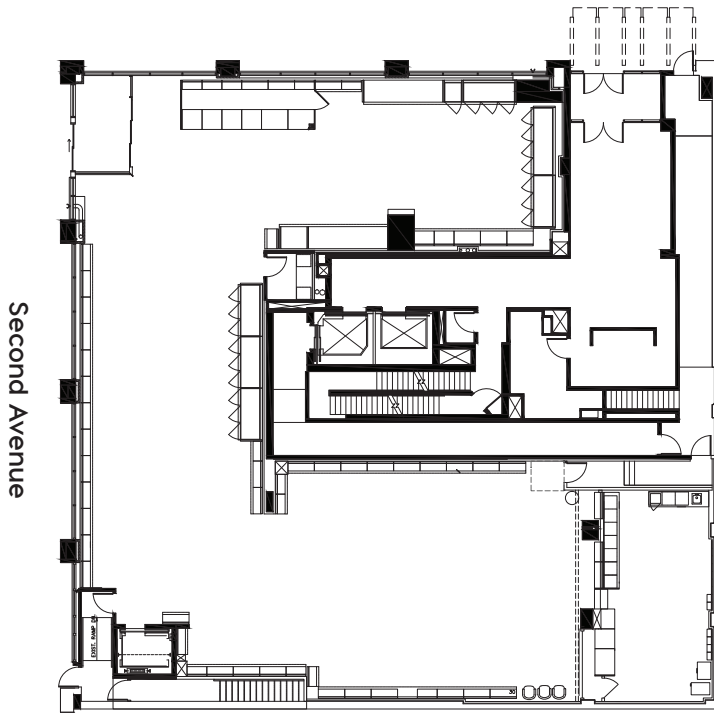
+1 212 812 5888

PatrickA.Smith@jll.com

300 East 23rd Street

Ground Floor: 6,078 sf

Lower Level: 5,067 sf



East 23rd Street



Jones Lang LaSalle Brokerage, Inc. | 330 Madison Avenue New York, NY 10017

DISCLAIMER

Although information has been obtained from sources deemed reliable, neither Owner nor JLL makes any guarantees, warranties or representations, express or implied, as to the completeness or accuracy as to the information contained herein. Any projections, opinions, assumptions or estimates used are for example only. There may be differences between projected and actual results, and those differences may be material. The Property may be withdrawn without notice. Neither Owner nor JLL accepts any liability for any loss or damage suffered by any party resulting from reliance on this information. If the recipient of this information has signed a confidentiality agreement regarding this matter, this information is subject to the terms of that agreement. ©2022 Jones Lang LaSalle IP, Inc. All rights reserved.