



For Lease

135 Meadow Lane, Canonsburg, PA 15317

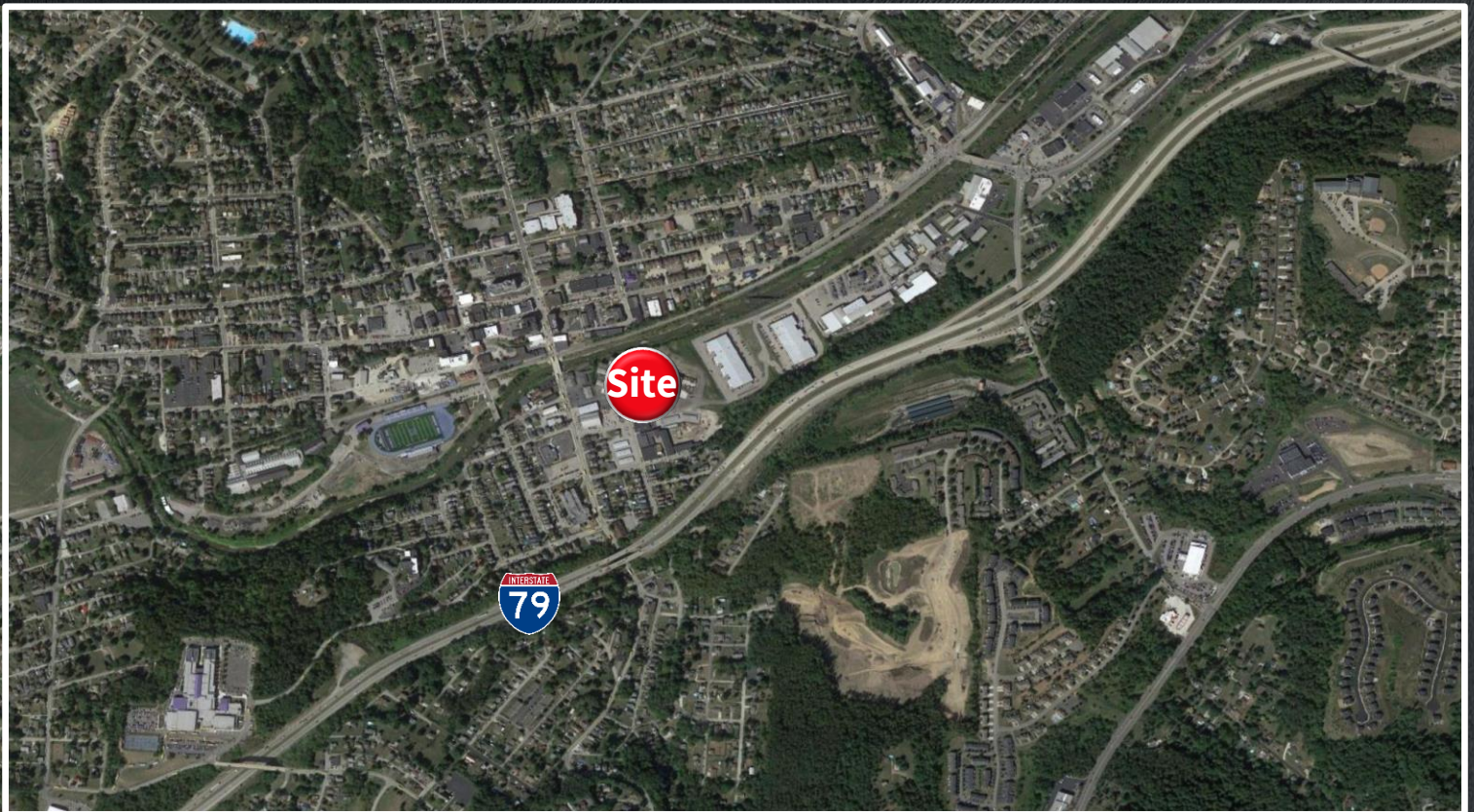
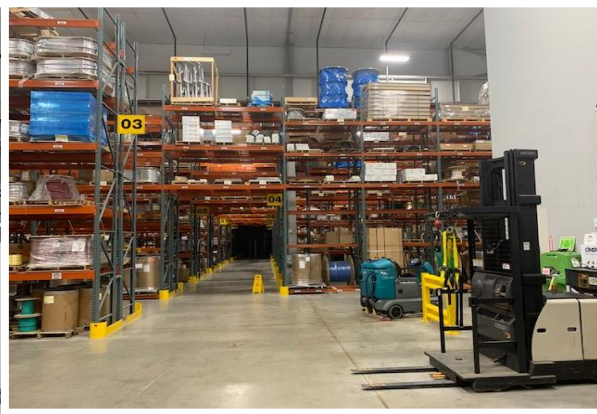
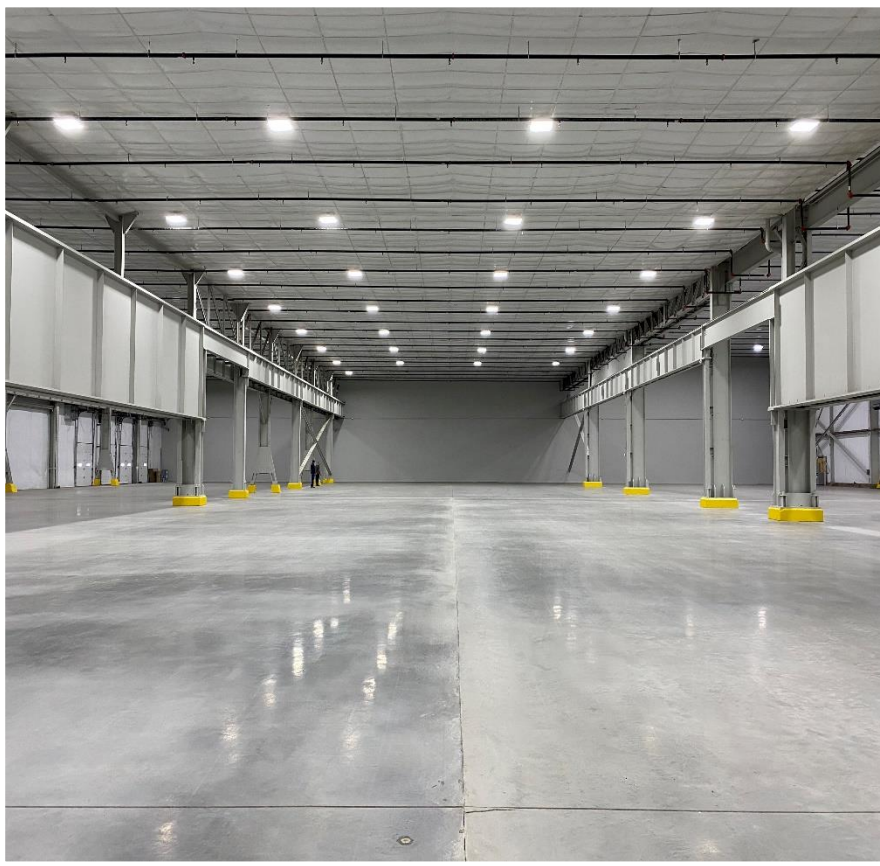
Property Overview:

- Clean and functional, Class “A” industrial space.
- Fully renovated in 2018.
- Superb access to I-79 and the regional highway system.

Total Building SF:	130,000 SF
Available SF:	80,000 SF
Clear Height:	30' +
Docks:	4 (expandable)
Drive-in Doors:	2 (expandable)
Parking :	87 (expandable by 66)
Fire Protection:	ESFR – K17 heads
Electrical Service:	3 Phase; 480V/277A
Gas:	Columbia Gas



Photos



Location Map

Contact us

Greg Hopkins
Vice President
+1 412 208 8245
greg.hopkins@am.jll.com

Rick O'Brien, SIOR
Managing Director
+1 412 208 1403
rick.obrien@am.jll.com

jll.com/pittsburgh



Disclaimer: Although information has been obtained from sources deemed reliable, Owner, Jones Lang LaSalle, and/or their representatives, brokers or agents make no guarantees as to the accuracy of the information contained herein, and offer the Property without express or implied warranties of any kind. The Property may be withdrawn without notice. ©2020. Jones Lang LaSalle. All rights reserved.