

9230 W OLYMPIC BLVD

2ND FLOOR | MEDICAL OFFICE/ PROFESSIONAL OFFICE FOR LEASE | **BEVERLY HILLS**



ASKING **TERMS**

SPACE AVAILABLE:	Suite 202 - 1,885 RSF Suite 204 - 896 RSF
RENTAL RATE:	\$4.35-\$4.75/RSF/Month Net of Utilities and Janitorial
AVAILABLE:	Immediately
PARKING:	\$200 per space/month
LEASE TERM:	Negotiable

THE **PROPERTY**

- NEWLY BUILT MOVE-IN READY SPACE AVAILABLE ON OLYMPIC BLVD.
- NEW COMMON AREA UPGRADES.
- ATTRACTIVE LAYOUT WITH WINDOW-LINE OFFICES
- HIGHLY VISIBLE BEVERLY HILLS LOCATION
- ONSITE PARKING AND IDEAL CORNER LOCATION
- SURROUNDED BY NUMEROUS RESTAURANT/ RETAIL AMENITIES
- ABILITY TO ACCOMMODATE MEDICAL PRACTICES

* Tenant to independently verify medical use is approved at the property with the city of Beverly Hills.



Jones Lang LaSalle Brokerage, Inc.,
Real estate license #01856260

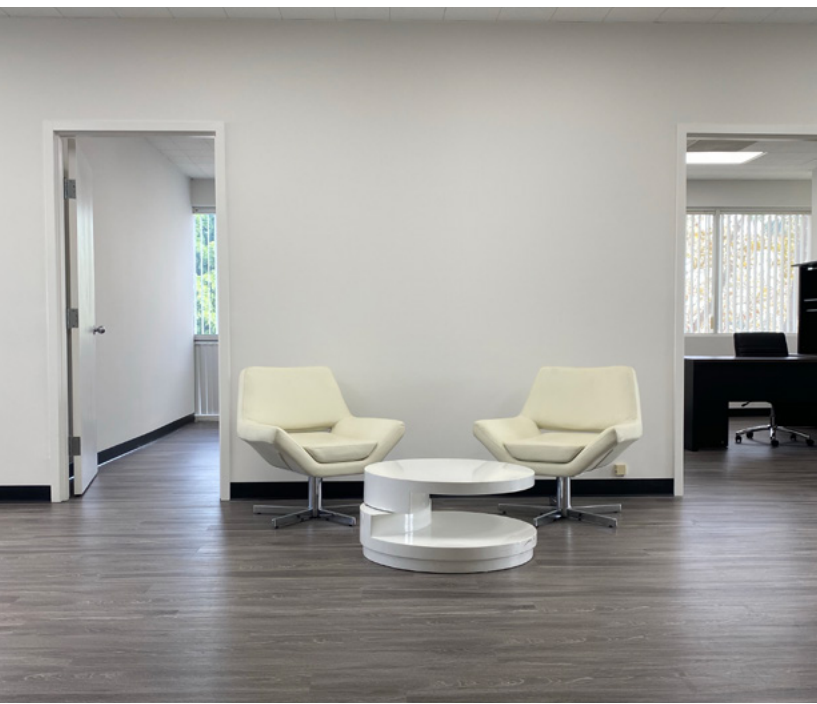
Ben Silver
Senior Vice President
+1 310 595 3840
ben.silver@jll.com
License # 01818061

Greg Astor
Associate
+1 818 317 4477
greg.astor@jll.com
License # 02021777

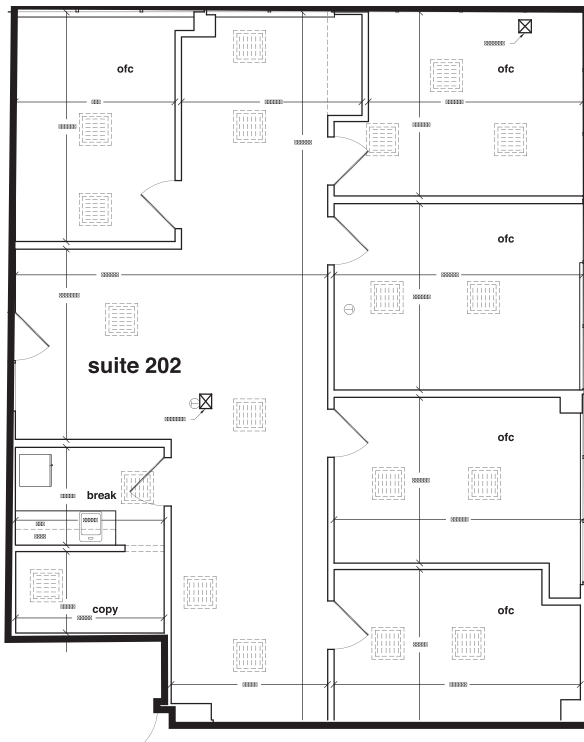
9230 W OLYMPIC BLVD

BEVERLY HILLS

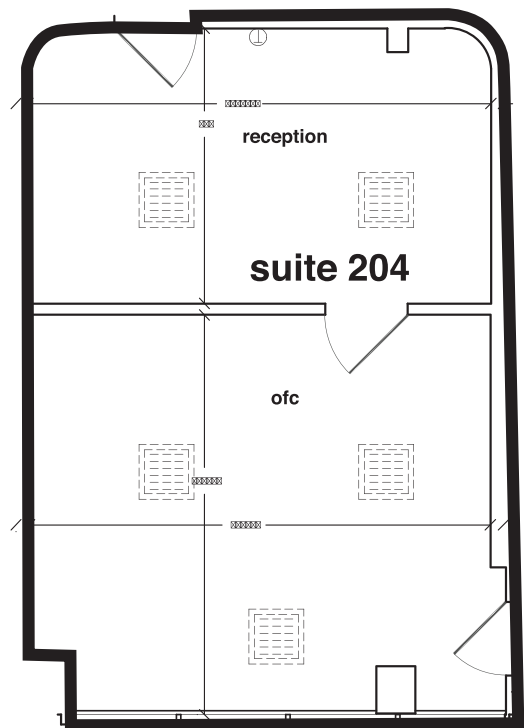
2ND FLOOR PHOTOS



SUITE 202
1,885 RSF
2nd Floor Office/Medical



SUITE 204
896 RSF
2nd Floor Office/Medical



Although information has been obtained from sources deemed reliable, neither Owner nor JLL makes any guarantees, warranties or representations, express or implied, as to the completeness or accuracy as to the information contained herein. Any projections, opinions, assumptions or estimates used are for example only. There may be differences between projected and actual results, and those differences may be material. The Property may be withdrawn without notice. Neither Owner nor JLL accepts any liability for any loss or damage suffered by any party resulting from reliance on this information. If the recipient of this information has signed a confidentiality agreement regarding this matter, this information is subject to the terms of that agreement. © 2022. Jones Lang LaSalle IP, Inc. All rights reserved.