



FOR LEASE

35 Travis Street, Allston

Up to 6,000 SF available

Two full floors available

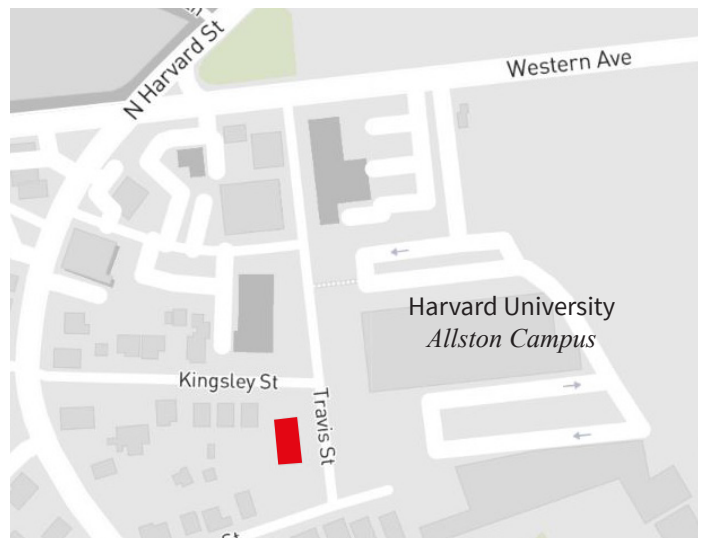
35 Travis Street is conveniently located near Barry's Corner adjacent to Harvard's Allston campus. The neighborhood is within walking distance to numerous amenities including multiple restaurants, hotels and is easily accessible by bike, bus, train, and car.

– **Availability:**

- 1st Floor: 3,074 RSF
- 2nd Floor: 2,935 RSF

– **Available:** Immediately

– **Parking:** 24 spaces



For more information, please contact:

John Osten
617 531 4107

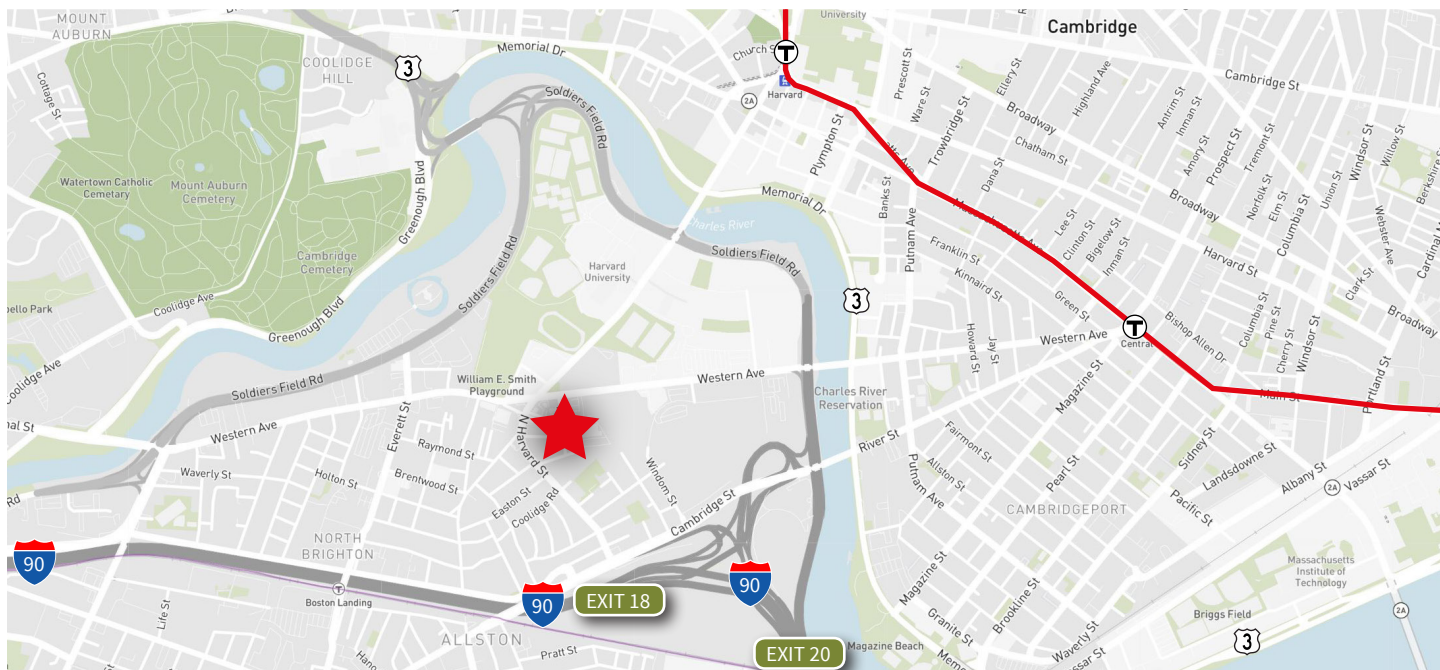
John.Osten@am.jll.com

Maggie Dore
617 531 4196

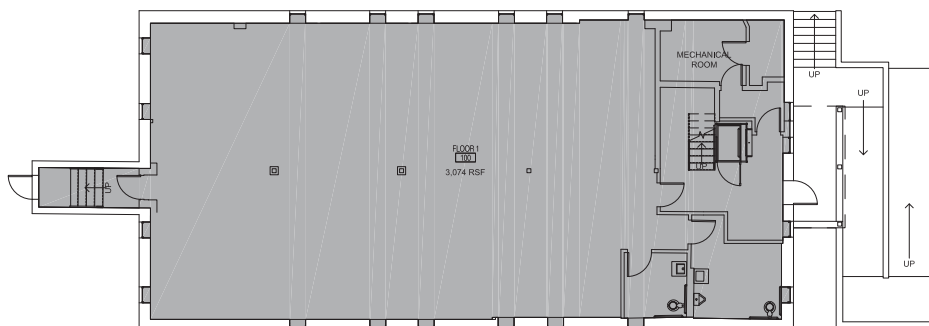
Maggie.Dore@am.jll.com



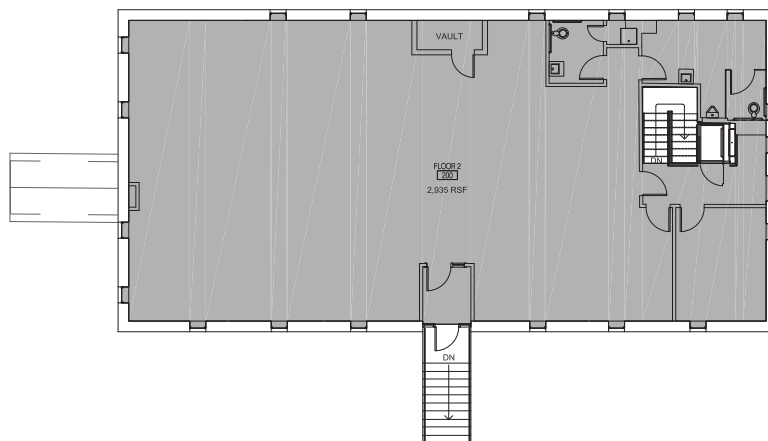
LOCATION



First Floor 3,074 RSF



Second Floor 2,935 RSF



For more information, please contact:

John Osten
617 531 4107

John.Osten@am.jll.com

Maggie Dore
617 531 4196

Maggie.Dore@am.jll.com

