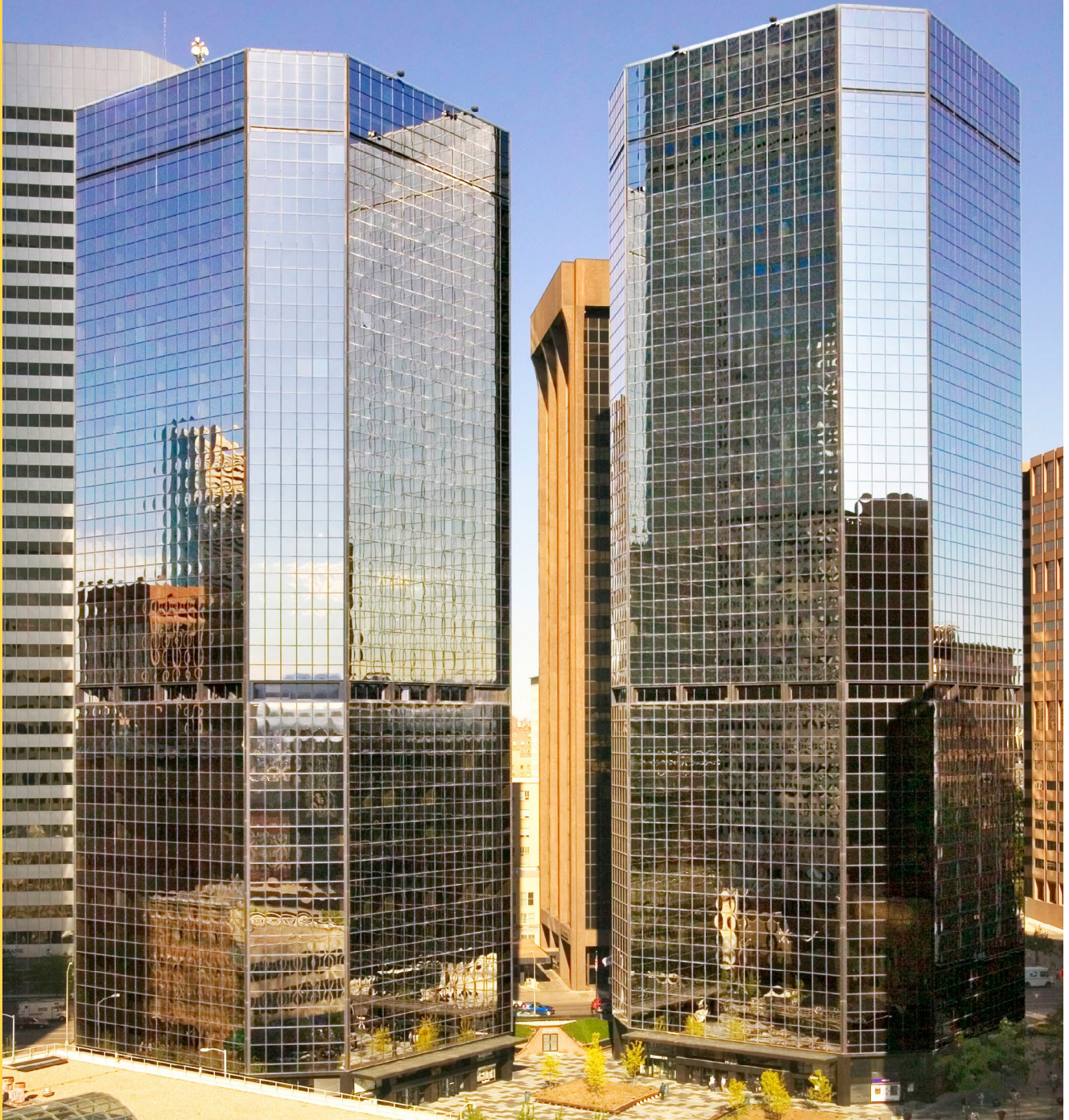




DENVER ENERGY CENTER

1625 & 1675 BROADWAY



**BUSINESS HAS CHANGED.
SO HAVE WE.**

Denver Energy Center, located at 1625 and 1675 Broadway, is situated squarely at the heart of downtown Denver’s lifeline. Both buildings have undergone new and exciting changes for tenants seeking traditional or open collaborative spaces. New lobbies, an updated plaza, new fitness center and conference facility are complete.

BUILDING DETAILS

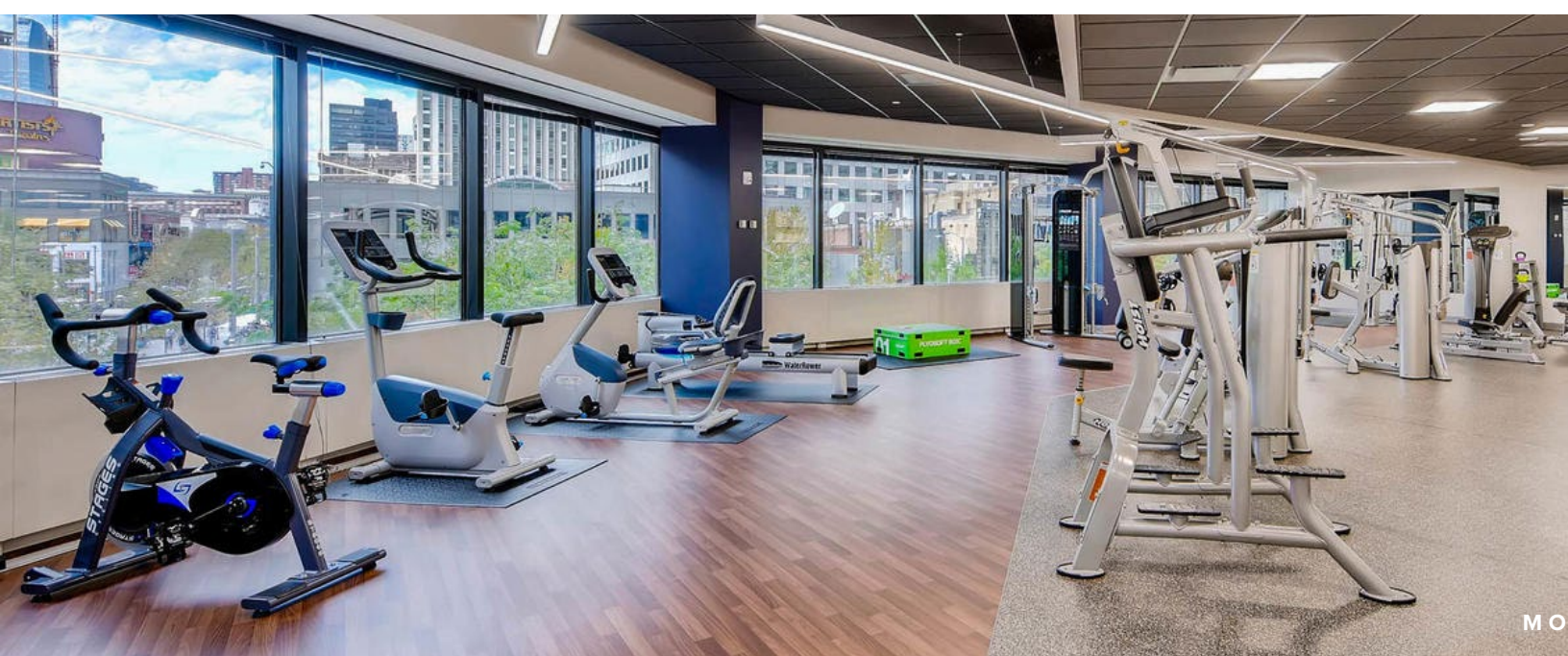
	TOWER I 1675 BROADWAY	TOWER II 1625 BROADWAY
Number of Floors	28	29
Building Size	382,970 SF	394,363 SF
Typical Floor Size	14,004 SF	13,941 SF
Year Built	1979	1980
Subterranean Parking	111 executive parking spaces	
Additional Parking	Additional spaces available for lease at 15th & Tremont and at The Sheraton Hotel	
Architect / Developer	Skidmore, Owens & Merrill / Oxford Anschutz Development Group	





PROPERTY FEATURES

Lobby	Elegant, bright, open marble lobbies welcome tenants and guests.
Views	Buildings feature incredible views of uptown, downtown and the Rocky Mountains.
Exterior	The two buildings have spectacular curtain walls of reflective gray vision spandrel panes set in a black anodized aluminum frame, high-quality interior finishes and a beautifully landscaped plaza.
Security	Security personnel patrol both buildings 24 hours a day, 365 days a year. The property is secured by high-end close circuit television cameras in lobbies, concourse levels, service corridors, freight elevators and other critical building common areas. Building entrance doors are equipped with electronic locks and a security key card access system for after hours access.
Parking	Two levels of secure subterranean parking feature 111 executive parking spaces. Additional spaces are available one block from the property at the 15th & Tremont parking garage via parking easement, and across the street at The Sheraton Hotel. Monthly parking pass holders may access either garage 24 hours a day with security cards.
Amenities	We have a new tenant amenity floor featuring a state-of-the-art conference facility and full-service fitness center. The property also features on-site management, engineer staff and KeyBank. The property is located near 19 hotels, totaling nearly 7,000 rooms and 203 conference/meeting rooms within a twelve block radius. There is easy access to abundant retail and restaurant amenities via the free 16th Street mall shuttle which connects uptown to lower downtown. Urban living, arts and entertainment are all within blocks.





BRAND NEW UPGRADES



Open lobby with first-class finishes



Enhanced natural light in common spaces



24-hour security



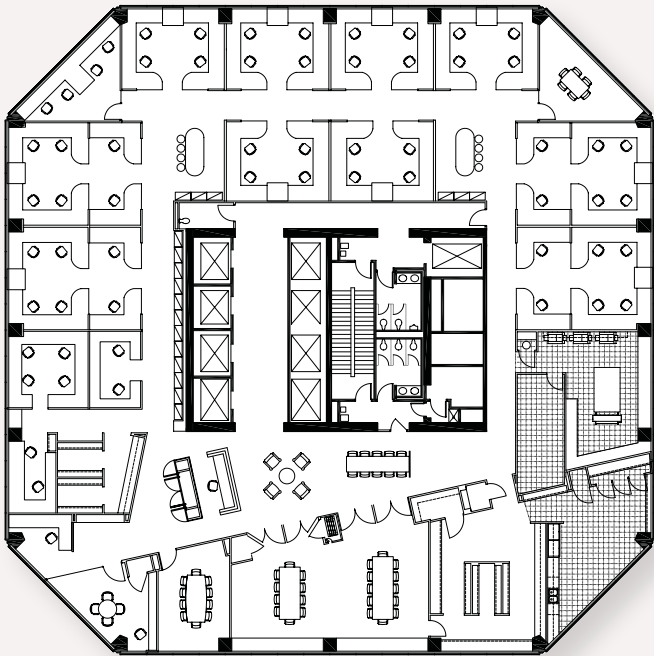
State-of-the-art fitness center & conference facility



Outdoor plaza

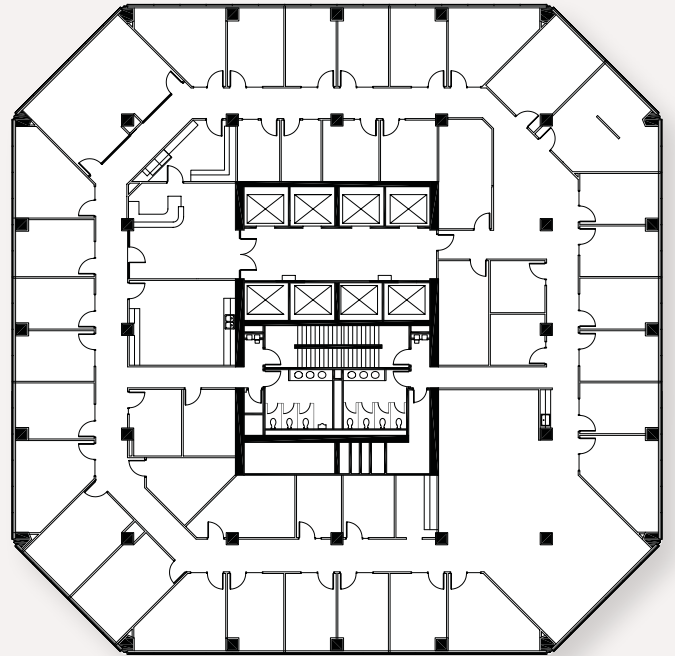


TYPICAL FLOOR PLATES



1625 BROADWAY

13,941 SF



1675 BROADWAY

14,004 SF



ACCESSIBILITY FROM ALL ANGLES





**DENVER
ENERGY
CENTER**

1625 & 1675 BROADWAY

LEASING INFORMATION

Andy Ross

+1 303 260 6504

andy.ross@jll.com

John Beason

+1 303 217 7949

john.beason@jll.com

Michael Crane

+1 303 260 6533

michael.crane@jll.com

Although information has been obtained from sources deemed reliable, neither Owner nor JLL makes any guarantees, warranties or representations, express or implied, as to the completeness or accuracy as to the information contained herein. Any projections, opinions, assumptions or estimates used are for example only. There may be differences between projected and actual results, and those differences may be material. The Property may be withdrawn without notice. Neither Owner nor JLL accepts any liability for any loss or damage suffered by any party resulting from reliance on this information. If the recipient of this information has signed a confidentiality agreement regarding this matter, this information is subject to the terms of that agreement. ©2023. Jones Lang LaSalle IP, Inc. All rights reserved.

