

FOR SALE OR FOR LEASE

**455 Highway 90
Bay St Louis, MS**



PROPERTY HIGHLIGHTS

Approximate 0.5 acre former convenience store available directly on Highway 90 in Bay St. Louis. Excellent visibility and access to Highway 90.

BUILDING SF	1,571	SIGNAGE TYPE	N/A
LAND AC	0.59	1-MILE (POP.)	4,936
YEAR BUILT	1993	3-MILE (POP.)	12,255
PARKING	35 Spaces	MED. INCOME	\$55,665
TRAFFIC COUNTS	17,000 VPD	SPACE USE	N/A



SHER FRENCH
Account Director
+1 314 391 2980
sher.french@cushwake.com

Emily Miller
1 251 694 5077
emilyj.miller@am.jll.com

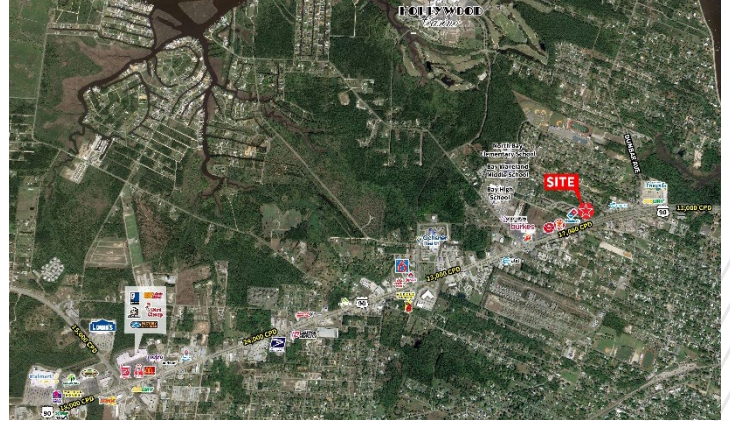
Allen Garstecki
1 251 301 7369
allen.garstecki@am.jll.com

FOR SALE OR FOR LEASE

455 Highway 90
Bay St Louis, MS

AREA RETAILERS

Domino's, Popeyes, Pizza Hut, Burkes Outlet, Anytime Fitness, Cspire, Subway, AT&T, Smoothie King, Tractor Supply, Advance Auto Parts, Lowes, Dollar Tree, Walmart



LEGAL INFORMATION

TAX PARCEL ID	137A-0-45-138.000
2018 RE TAXES	\$5,061
ZONING	C-3 Highway Commercial



RESTRICTIONS

Property will be restricted against uses competitive with convenience stores

OFFERING PROCESS

Seller will consider the submission of an offer using Seller's Letter of Intent form, which will be provided to qualified buyers. Interested parties should submit an LOI on terms where the Buyer agrees to complete a purchase of the property on the Seller's Real Estate Sales Agreement. All offers must be received by Exclusive Agent, Cushman & Wakefield. Contact information is below:

SHER FRENCH
Account Director
+1 314 391 2980
sher.french@cushwake.com

Emily Miller
1 251 694 5077
emilyj.miller@am.jll.com

Allen Garstecki
1 251 301 7369
allen.garstecki@am.jll.com