

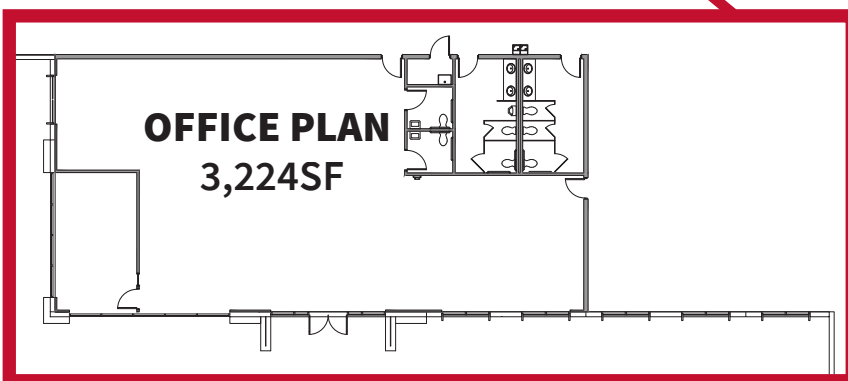
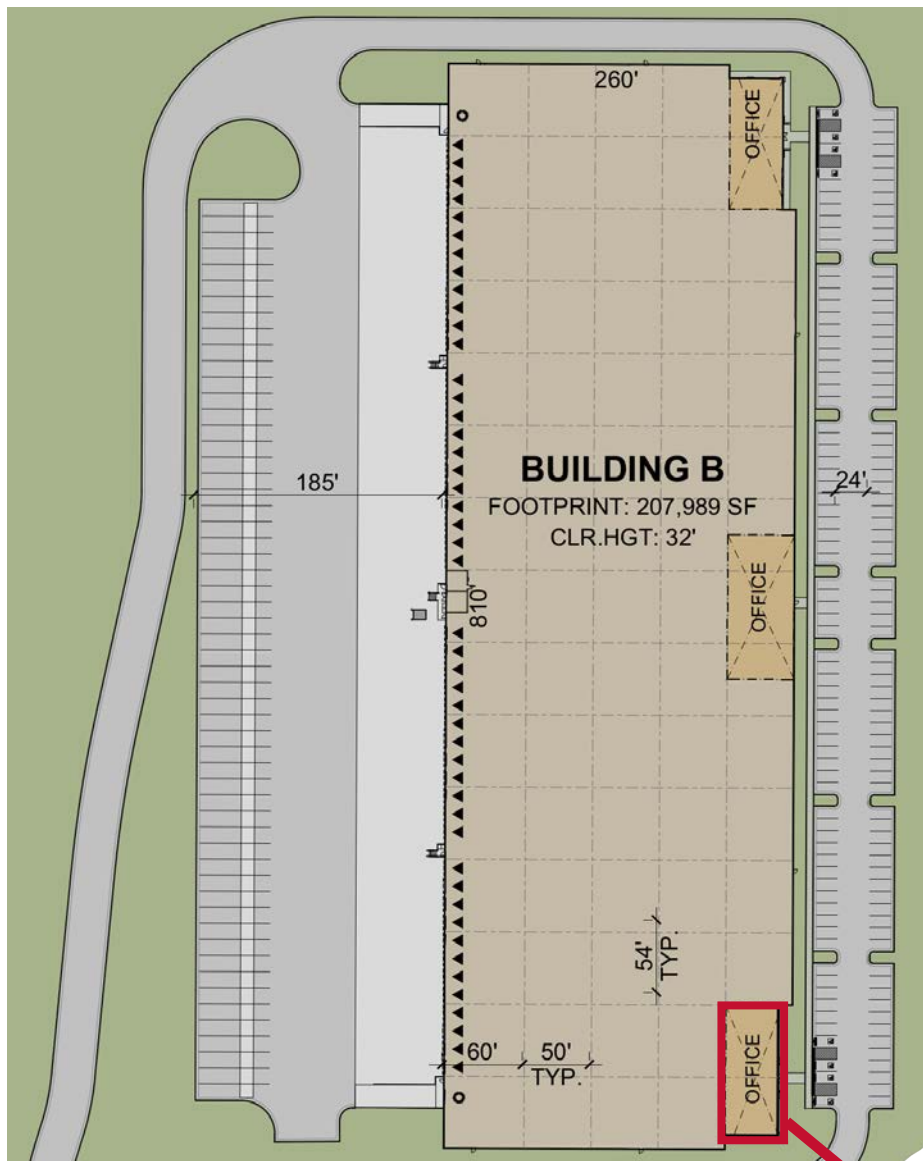


# BUSCH LOGISTICS PARK

1187 Cass White Road  
Cartersville, GA

**207,989 S.F. REAR-LOAD FACILITY  
NORTHWEST SUBMARKET**

**Hines** |  **JLL**



## BUILDING SPECIFICATIONS

TOTAL SF:	207,989 SF
CONFIGURATION:	Rear-load
BUILDING DIMENSIONS:	260' x 810'
COLUMN SPACING:	54' w x 50' d
LOADING BAY:	60' loading bay
CLEAR HEIGHT:	32' clear minimum
DOCK-HIGH DOORS:	47 (9' x 10')
DRIVE-IN DOORS:	2 (14' x 16')
TRUCK COURT DEPTH:	185' deep
AUTO PARKING:	150 auto spaces
TRAILER STORAGE:	56 trailer spaces
SPRINKLER:	ESFR with K-17 heads
ROOF:	60 mil, TPO mechanically fastened roof
FLOOR SLAB:	7" reinforced slab
ELECTRICAL:	3,000 amps, 277/480 volts, 3 phase
LIGHTING:	LED





Interstate 75: 2 miles  
 Interstate 285: 40 miles  
 Interstate 20: 48 miles



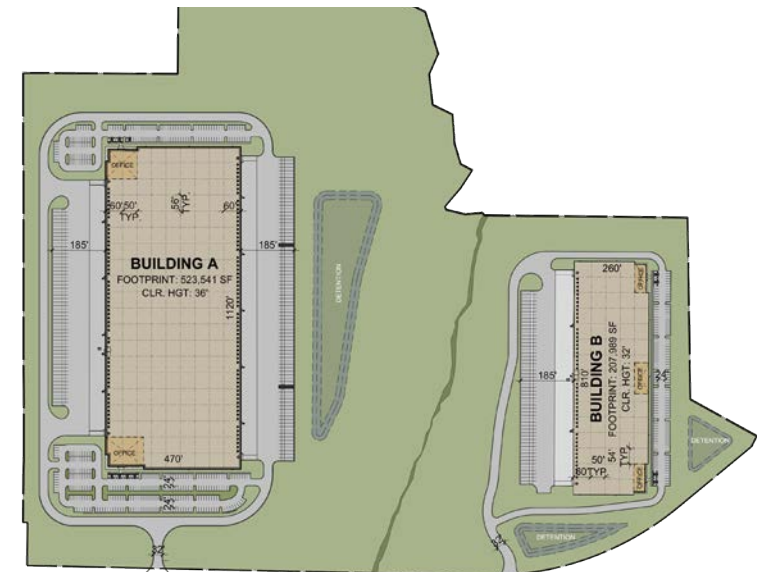
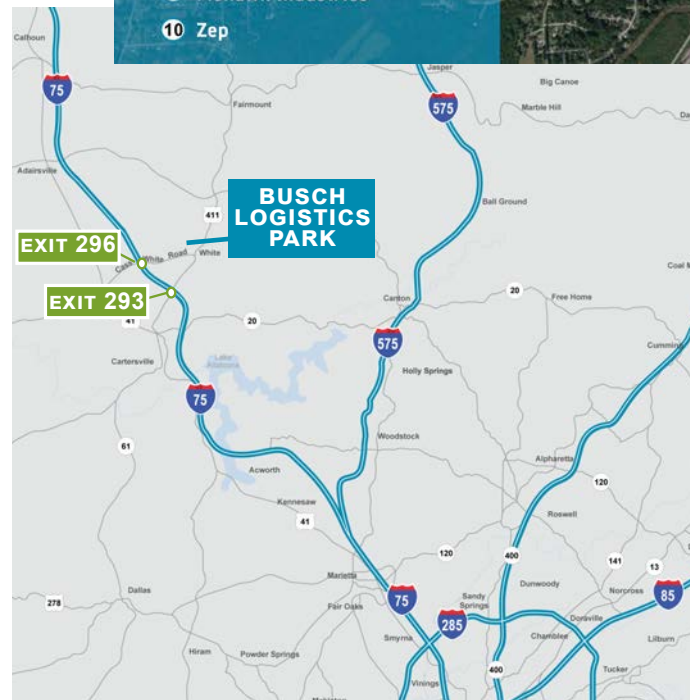
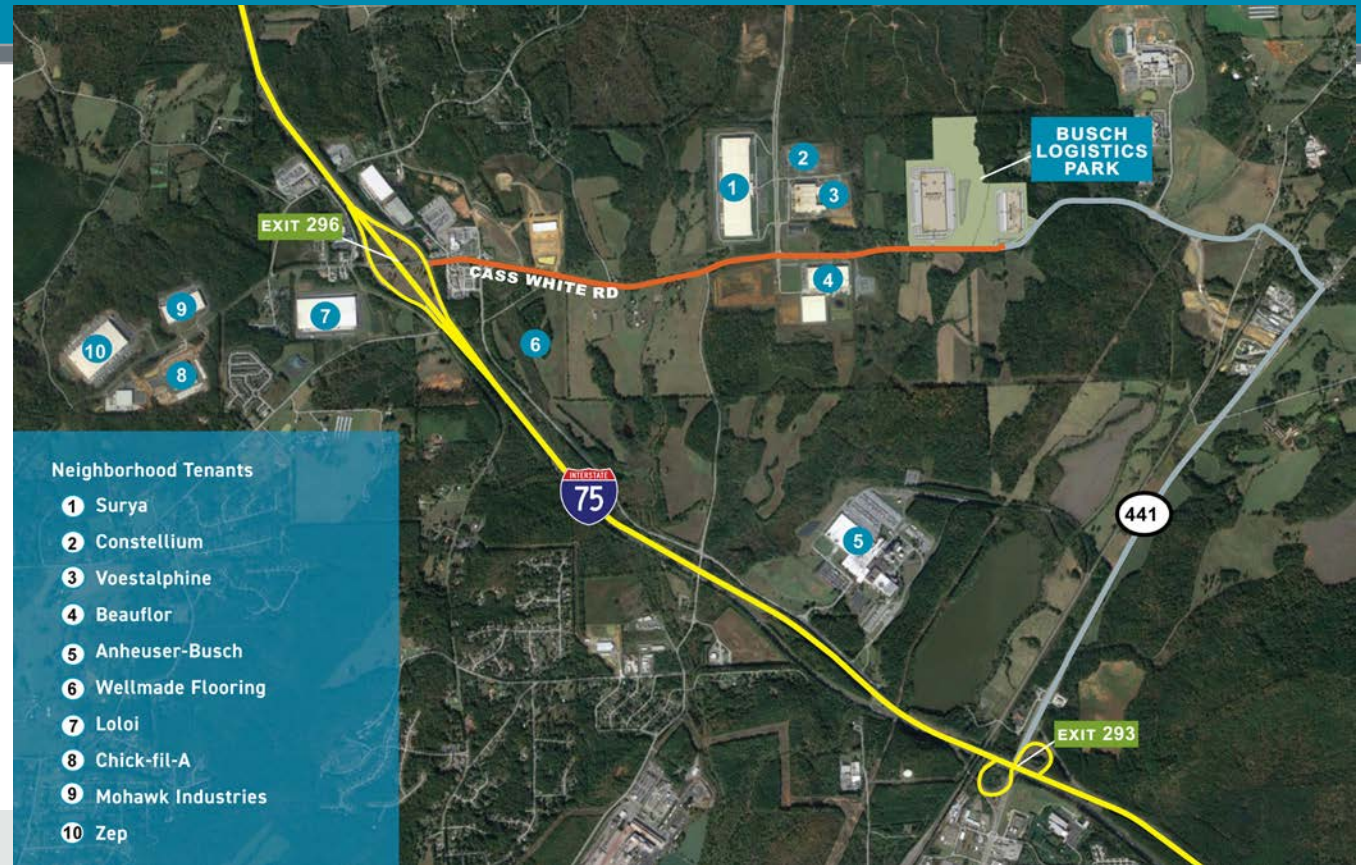
Hartsfield-Jackson Atlanta  
 International Airport: 60 miles  
 Chattanooga Airport: 68 miles



Appalachian Regional  
 Port: 47.5 miles  
 Port of Savannah: 298 miles



Dalton, GA: 42 miles  
 Atlanta, GA: 57 miles  
 Chattanooga, TN: 70 miles  
 Savannah, GA: 298 miles



## KEY FACTS



\$66,475

**MEDIAN HOUSEHOLD  
INCOME**

*Note: The above data is based on a 45-minute drive-time from Busch Logistics Park.*

## LABOR DATA

Busch Logistics Park has nearly 107,964 targeted workers in the industrial labor force within a 45-minute drive time. Approximately 11% of the total labor force located near Busch Logistics Park are workers in the industrial labor force.



**7 TECHNICAL SCHOOLS  
WITHIN A 45-MIN DRIVE TIME**

*Note: The industrial labor force includes transportation/warehouse, wholesale trade and manufacturing workers.*

### FOR LEASING INFORMATION, PLEASE CONTACT:

Reed Davis  
O: 404 995 2227  
C: 404 844 9128  
reed.davis@am.jll.com

Bob Currie  
O: 404 995 2280  
C: 404 368 7111  
bob.currie@am.jll.com

Hines | JLL

Jones Lang LaSalle © 2018 Jones Lang LaSalle IP, Inc. All rights reserved. All information contained herein is from sources deemed reliable; however, no representation or warranty is made to the accuracy thereof. 03.18

