

Flagship retail space for lease

211 JEFFERSON ST

Spaces available from
1,000 SF up to 30,000 SF



THE NEIGHBORHOOD

211 Jefferson is located along the northern waterfront edge of San Francisco's Fisherman's Wharf, one of the busiest and most well-known tourist attractions in the western United States. Fisherman's Wharf, known primarily for its novelty attractions, souvenir shops, and plentiful photo opportunities, is also still home to real fisherman who can be spotted at work in Fish Alley off of Leavenworth Street.

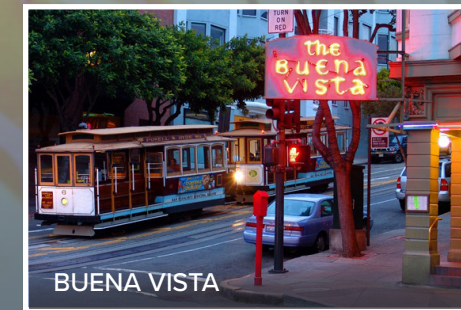
The area also offers entry to the Golden Gate Promenade, which continues for three scenic miles along the shoreline of Crissy Field to North Point. The historic F-Line streetcar and two cable car lines terminate in the neighborhood, and sightseeing boats and charters link tourists to Alcatraz (famously known as "The Rock"), Angel Island, and other popular destinations around the San Francisco Bay.

211 Jefferson is located immediately adjacent to North Beach, also known as San Francisco's "Little Italy," is rich in Italian heritage and features multiple jazz clubs, galleries, restaurants, and gelato parlors in less than a square mile.

ATTRACTIONS



DINING



HOTELS



MAP

EATERIES

- | | | | |
|---------------------|-----------------------------|-------------------------|----------------------|
| 1 Tarantino's | 8 Boudin | 15 Supreme Crab | 22 Quickly |
| 2 Crab Station | 9 San Francisco Brewing Co. | 16 Carmel Pizza Company | 23 The Crepe Cafe |
| 3 Nick's Lighthouse | 10 Taqueria El Farolito | 17 The Baked Bear | 24 In-N-Out Burger |
| 4 CafeB | 11 Crepe Cafe | 18 Tanguito | 25 Fisherman's Pizza |
| 5 Alioto's | 12 Darren's Cafe | 19 The Codmother | 26 Castagnola 's |
| 6 Chowder Hut | 13 Aroma Tea Shop | 20 Hollywood Cafe | 27 Lou's Fish Shack |
| 7 The Grotto | 14 Altalena Vinoteca | 21 Surisan | 28 Pompei's Grotto |

RETAILERS

- | | |
|--------------------------|-------------------------|
| 29 Cioppino's | 1 SF Chocolate Store |
| 30 Capurro's | 2 Cariloha and Del Sol |
| 31 Winery Collective | 3 Pearl Factory |
| 32 Franciscan Crab | 4 La line |
| 33 Waterfront Bakery | 5 Only In San Francisco |
| 34 Starbucks | 6 Pepper Palace |
| 35 eight am | 7 FIRST Clothing |
| 36 Luigi's Pizzeria | 8 IT'SUGAR |
| 37 Bubba Gump Shrimp Co. | 9 Safe Harbor |
| 38 Players Sports Grill | 10 Frank's Fisherman's |
| 39 The Buena Vista | 11 The Wharf Store |
| 40 The Pub | 12 The Crystal Shop |
| 41 Ghirardelli Ice Cream | 13 Wharf Outdoors |
| 42 Wipeout Bar & Grill | 14 See's Candies |
| 43 Chowders | 15 Patagonia |
| 44 Hard Rock Cafe | 16 CVS |
| 45 Pier Market | 17 Candy Baron |
| 46 Chart House | 18 LUSH |

LODGING

- 1 Holiday Inn
- 2 Holiday Inn Express
- 3 Hyatt Centric
- 4 Marriott Vacation Club Pulse
- 5 Marriott Fisherman's Wharf
- 6 Hotel Caza
- 7 Courtyard by Marriott
- 8 Argonaut Hotel
- 9 Fairmont Heritage Place
- 10 Hotel Riu Plaza
- 11 Hotel Zephyr

CULTURAL

- 1 Musee Mecanique
- 2 USS Pampanito
- 3 PIER 39
- 4 Madame Tussauds
- 5 Ripley's Believe It or Not!
- 6 Hyde Street Pier
- 7 Cartoon Art Museum
- 8 Ghirardelli Square



THE NUMBERS

Neighborhood demographics

16.4 Million

visitors per year to Fisherman's Wharf

64.5%

of visitors to San Francisco visit Fisherman's Wharf

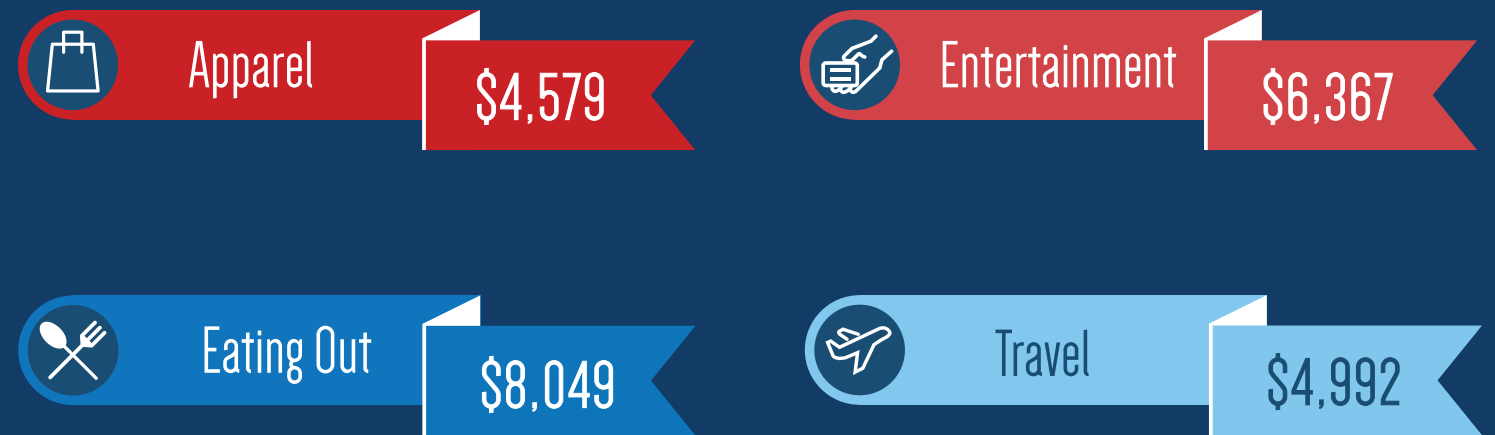
36.8%

of visitors have eaten in Fisherman's Wharf

\$600M

in retail sales and \$250M in hotel expenditures

Average annual spending



Source: ESRI 2020

33%

of visitors spend between

\$150 - \$300

per visit to Fisherman's Wharf



18,605

total population



\$132,902

average household income



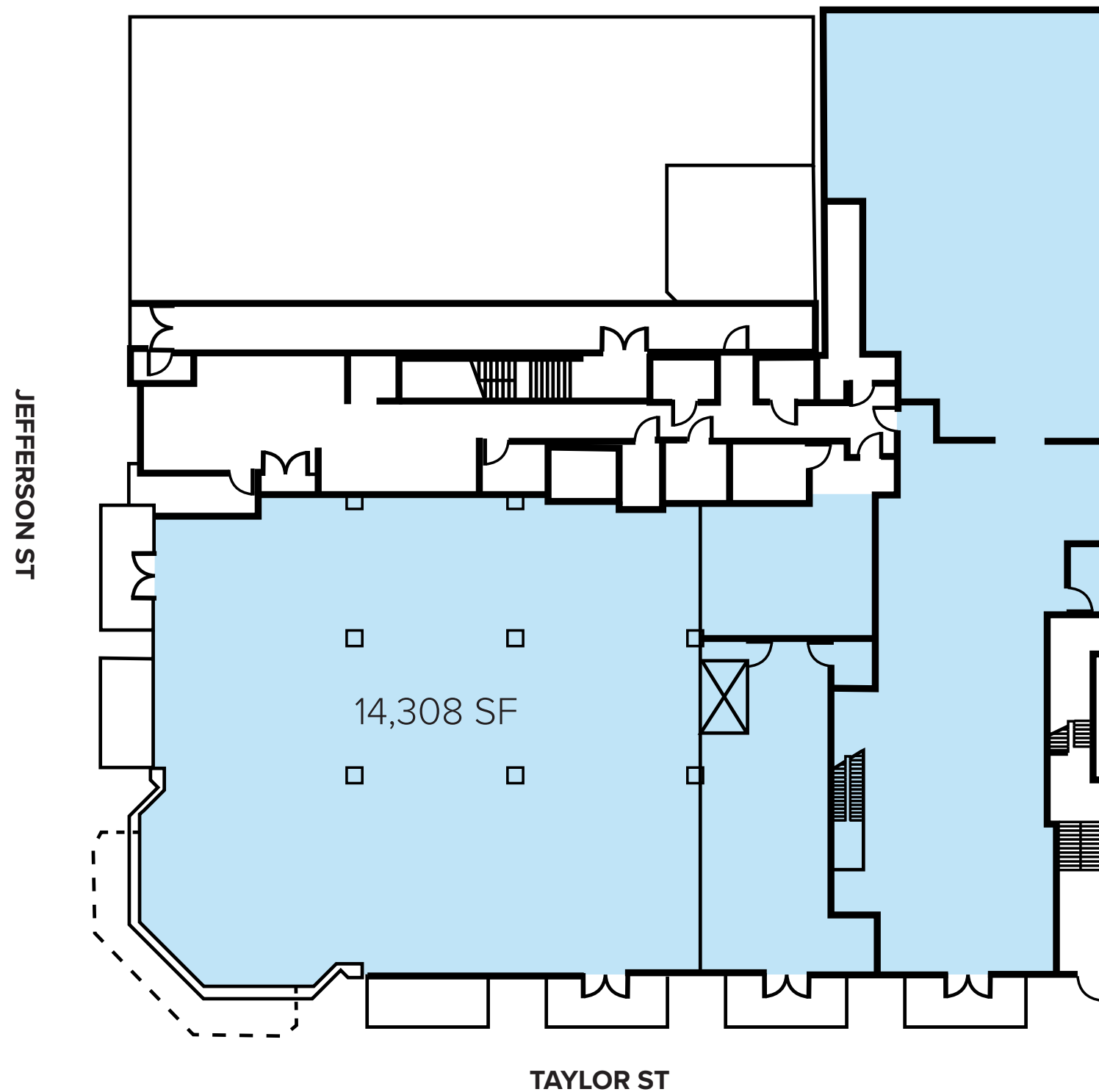
1,476

businesses

Source: ESRI - 15 Minute walk time

THE SPACE

1ST FLOOR

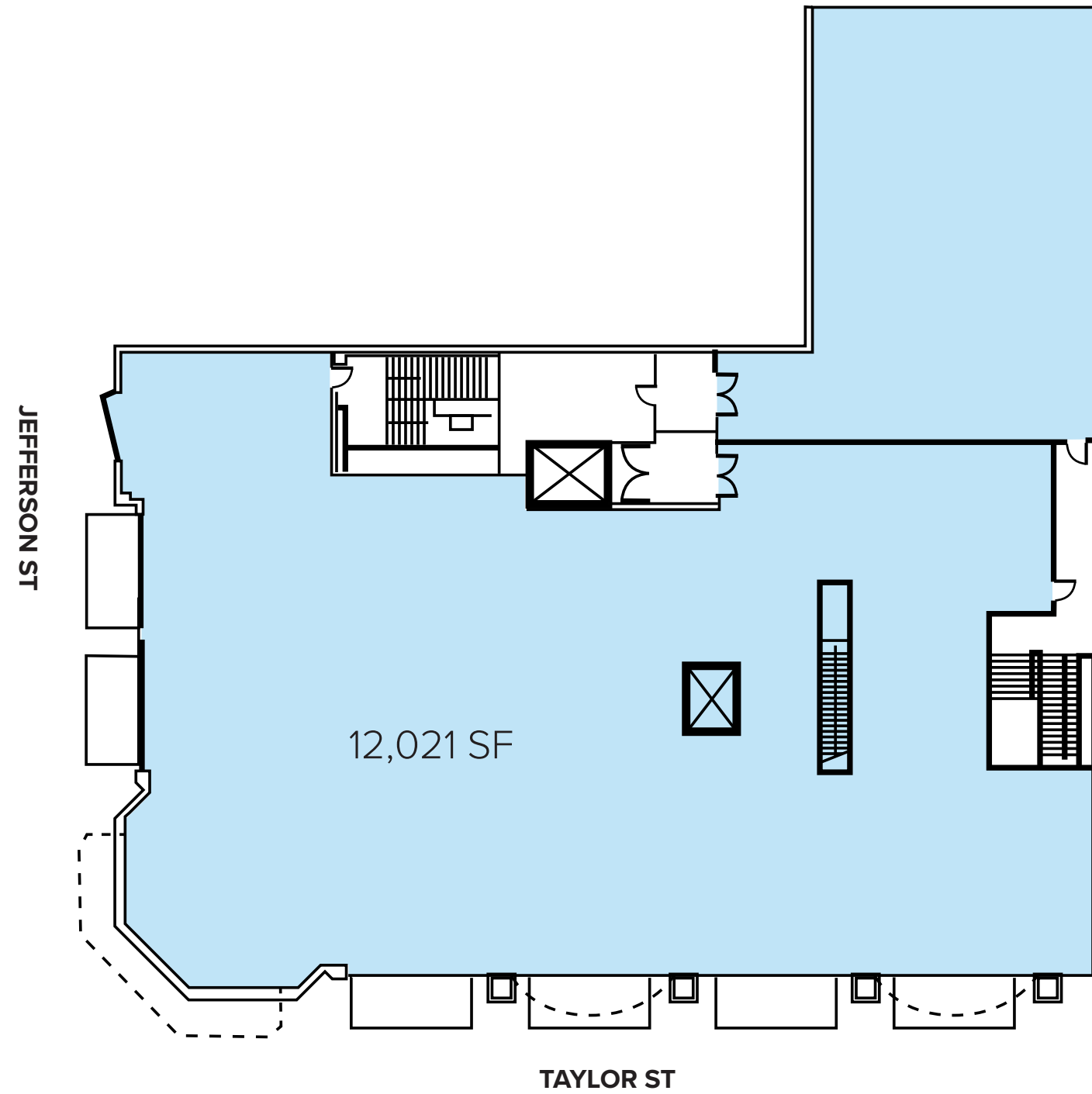


HIGHLIGHTS

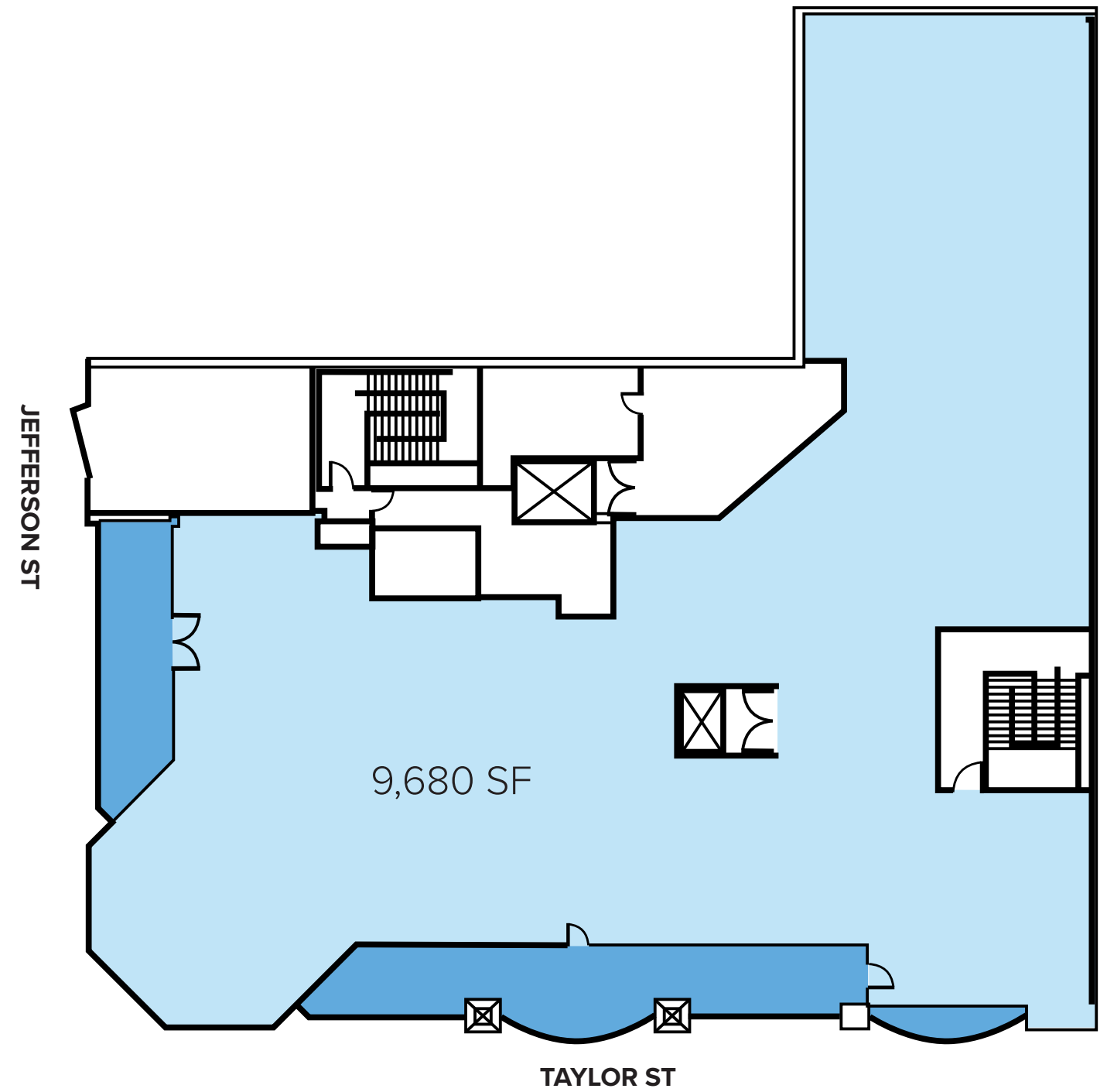
- Hard corner premium location in the heart of Fisherman's Wharf
- Incredible frontage on Jefferson St. and Taylor St.
- Thousands of pedestrians and traffic views daily
- Centrally located between Waterfront and North Beach
- Proximity to strong retail co-tenancy

THE SPACE

2ND FLOOR



3RD FLOOR



Ben Lazzareschi
Managing Director
+1 415 228 3070
Ben.Lazzareschi@am.jll.com
RE License #01414579

Rhonda Diaz Caldewey
Executive Vice President
+1 415 271 1900
Rhonda.Diaz@am.jll.com RE
License #01072594

Justin Choi
Associate
+1 925 858 6041
Justin.Choi@am.jll.com
RE License #02107928



Jones Lang LaSalle Brokerage, Inc.
Real Estate License #01856260

© 2020 Jones Lang LaSalle IP, Inc. All rights reserved. The information contained in this document is proprietary to Jones Lang LaSalle and shall be used solely for the purposes of evaluating this proposal. All such documentation and information remains the property of Jones Lang LaSalle and shall be kept confidential. Reproduction of any part of this document is authorized only to the extent necessary for its evaluation. It is not to be shown to any third party without the prior written authorization of Jones Lang LaSalle. All information contained herein is from sources deemed reliable; however, no representation or warranty is made as to the accuracy thereof.