



851 W BELMONT AVE

LAKEVIEW | CHICAGO, IL 60657

SIZE	2,575 SF
ASKING RENT	Upon Request
STATUS	Currently Lakeview Smiles
POSSESSION	Summer 2023

AREA RETAILERS



Marshalls

Michaels

RAGSTOCK



SECOND GENERATION DENTAL SPACE AVAILABLE

- Located in the heart of Lakeview, the site is situated within one of Chicago's most bustling neighborhoods
- Seamless transportation and access from the Belmont "El" stop which services Red, Brown, and Purple lines and proximity to multiple bus stops
- A short walk to Wrigley Field which attracts over 2.5 Million visitors per year
- Strong co-tenancy at the immediate intersection includes Target and Lakeview Connection, a 60,000 Square Foot grocery anchored development
- Benefit from fully built out dental office with exam rooms, plumbing and upgraded finishes

851 W BELMONT AVE

LAKEVIEW TRADE AREA



851 W BELMONT AVE

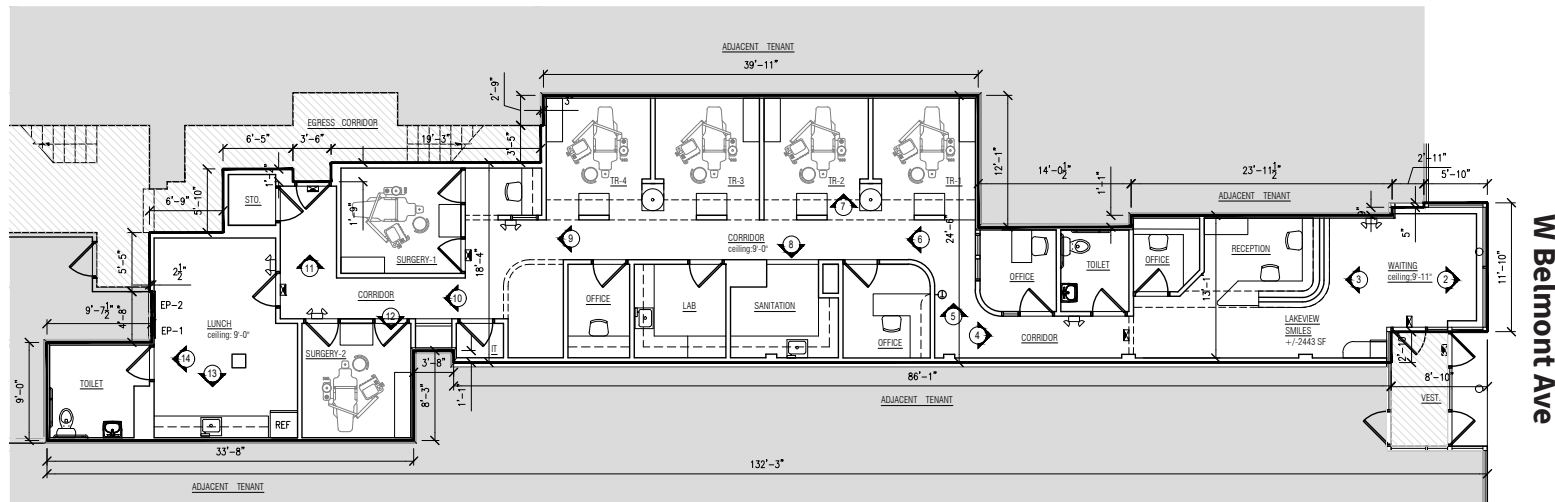
IMMEDIATE TRADE AREA



851 W BELMONT AVE

SITE PLAN

2,575 SF Available



Demographics



108,928
Population



\$159,482
Average Household Income



79,835
Daytime Population



62,887
Households



32.8
Median Age

All numbers taken from ESRI within a 1 mile radius.

Steve Schwartz

Senior Vice President
+312 228 2157
steve.schwartz@jll.com

Courtney Rouleau

Vice President
+312 228-3431
courtney.rouleau@jll.com

