



# Bakery Square

Bakery Office Three | Pittsburgh, PA

## Premier Sublease Opportunity

Sublease term through 11/30/2035

*2 floor availability: 37,082 SF - 74,164 SF*





# 2 Full Floor Opportunity

Bakery Office Three | 6501 Living Place



Entire 5th &  
6th Floors  
**37,082 RSF** Each



Available  
**Immediately**



Access to **full  
service** cafe



**Parking**  
2.5 / 1,000



**Fully furnished**  
Haworth office  
systems



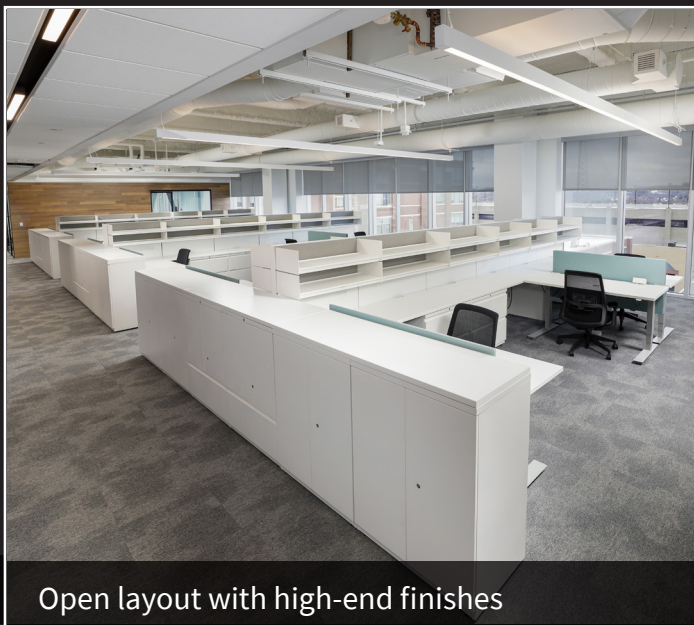
Well-lit  
**open layout**



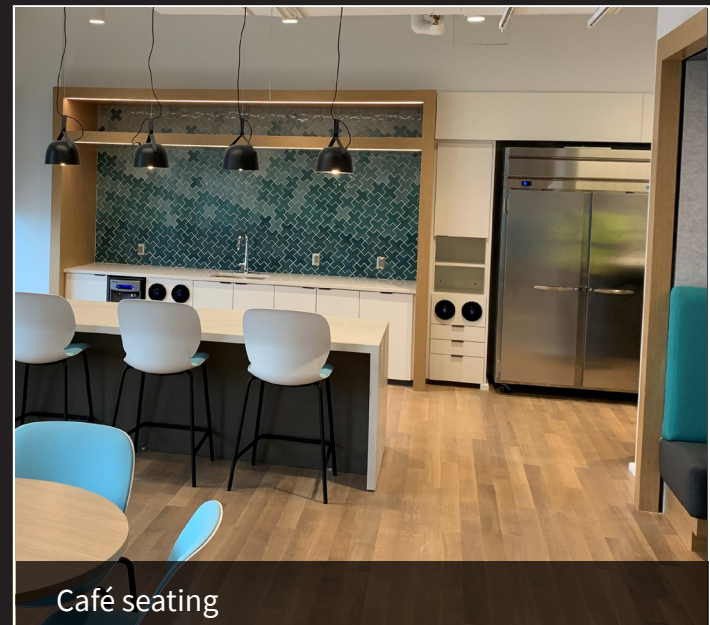
Variety of conference room spaces



Individual focus rooms



Open layout with high-end finishes



Café seating

# 5th Floor | 37,082 RSF

*As-built plan*



- 237 Workstations
- 8 Large meeting / collaborative rooms
- 4 Medium meeting / collaborative rooms
- 6 Small meeting rooms
- 1 Pantry
- 1 Coffee Bar
- 1 Mother's room
- 25 Focus rooms
- 12 Phone rooms



## 6th Floor | 37,082 RSF

*As-built plan*

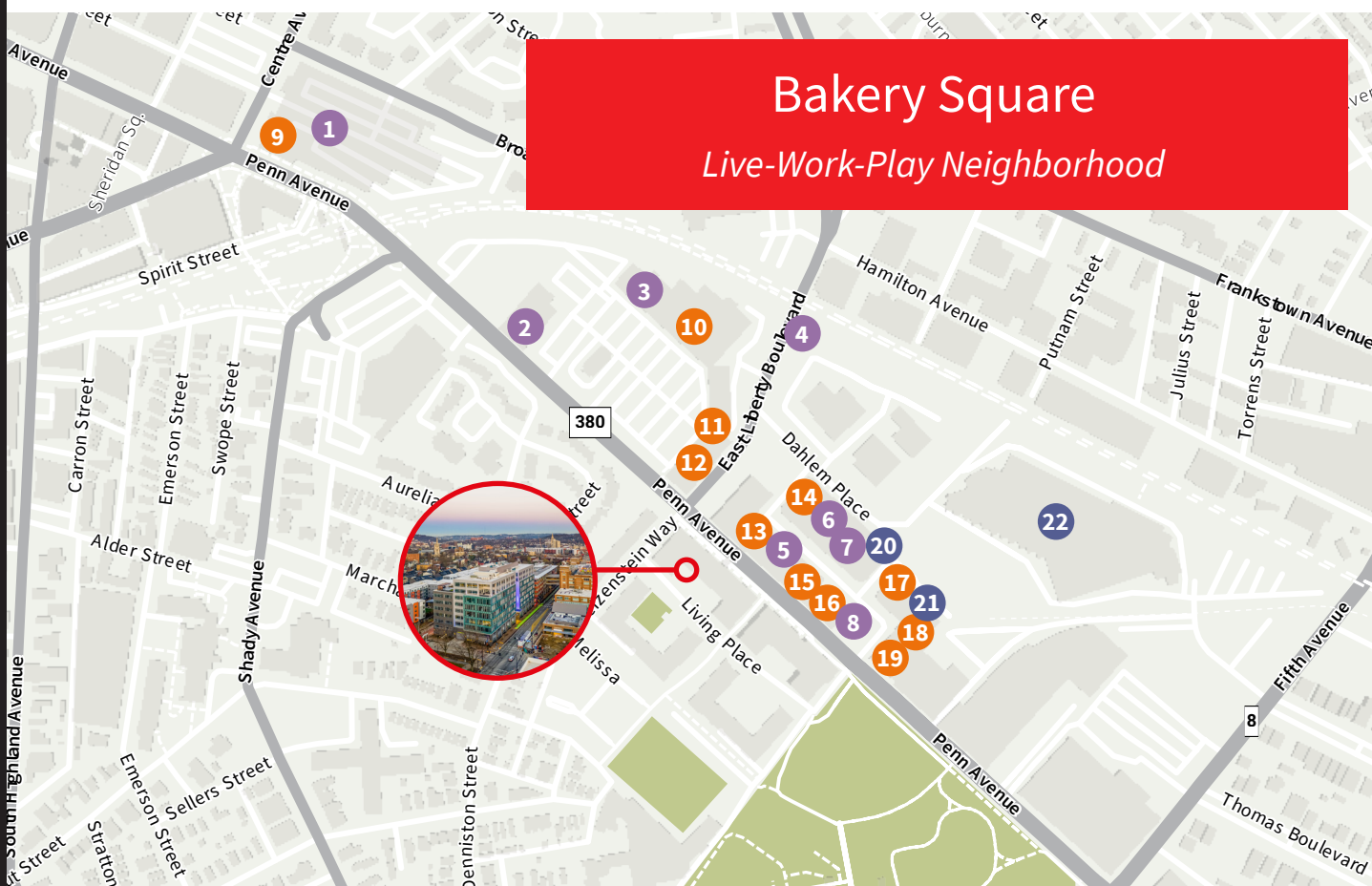


- 195 Workstations
- 9 Large meeting / collaborative rooms
- 5 Medium meeting / collaborative rooms
- 5 Small meeting rooms
- 1 Pantry
- 1 Coffee Bar
- 1 Mother's room
- 15 Focus rooms
- 8 Phone rooms



# Nearby Amenities

Bakery Office Three | 6501 Living Place



## Bakery Square Amenities

### RETAIL AND SHOPPING

- 1 Target
- 2 Giant Eagle
- 3 Trader Joe's
- 4 Staples
- 5 Free People
- 6 Anthropologie
- 7 BHLN Bridal
- 8 West Elm

### FOOD AND DRINK

- 9 BrewDog Pittsburgh
- 10 McDonald's
- 11 China Garden
- 12 China Buffet
- 13 Nrgize Juice
- 14 Jimmy John's
- 15 Alta Via Pizzeria
- 16 Galley Bakery Square
- 17 Panera
- 18 Tako Torta
- 19 Starbucks

### MISCELLANEOUS

- 20 LA Fitness
- 21 SpringHill Suites
- 22 East Liberty Garage

### ADDITIONAL LOCATION HIGHLIGHTS

- Hotel Indigo Pittsburgh (East Liberty) - 0.6 miles
- The Inn on Negley - 0.9 miles
- Hyatt House - 1.2 miles
- Carnegie Mellon University - 2 miles
- University of Pittsburgh - 2.8 miles
- Duquesne University - 4.7 miles





# Contact

**Nick Francic**  
+1 412 208 1400  
[nick.francic@jll.com](mailto:nick.francic@jll.com)

**Mike Nelson**  
+1 412 208 1400  
[mike.nelson@jll.com](mailto:mike.nelson@jll.com)



Although information has been obtained from sources deemed reliable, JLL does not make any guarantees, warranties or representations, express or implied, as to the completeness or accuracy as to the information contained herein. Any projections, opinions, assumptions or estimates used are for example only. There may be differences between projected and actual results, and those differences may be material. JLL does not accept any liability for any loss or damage suffered by any party resulting from reliance on this information. If the recipient of this information has signed a confidentiality agreement with JLL regarding this matter, this information is subject to the terms of that agreement. ©2023. Jones Lang LaSalle IP, Inc. All rights reserved.