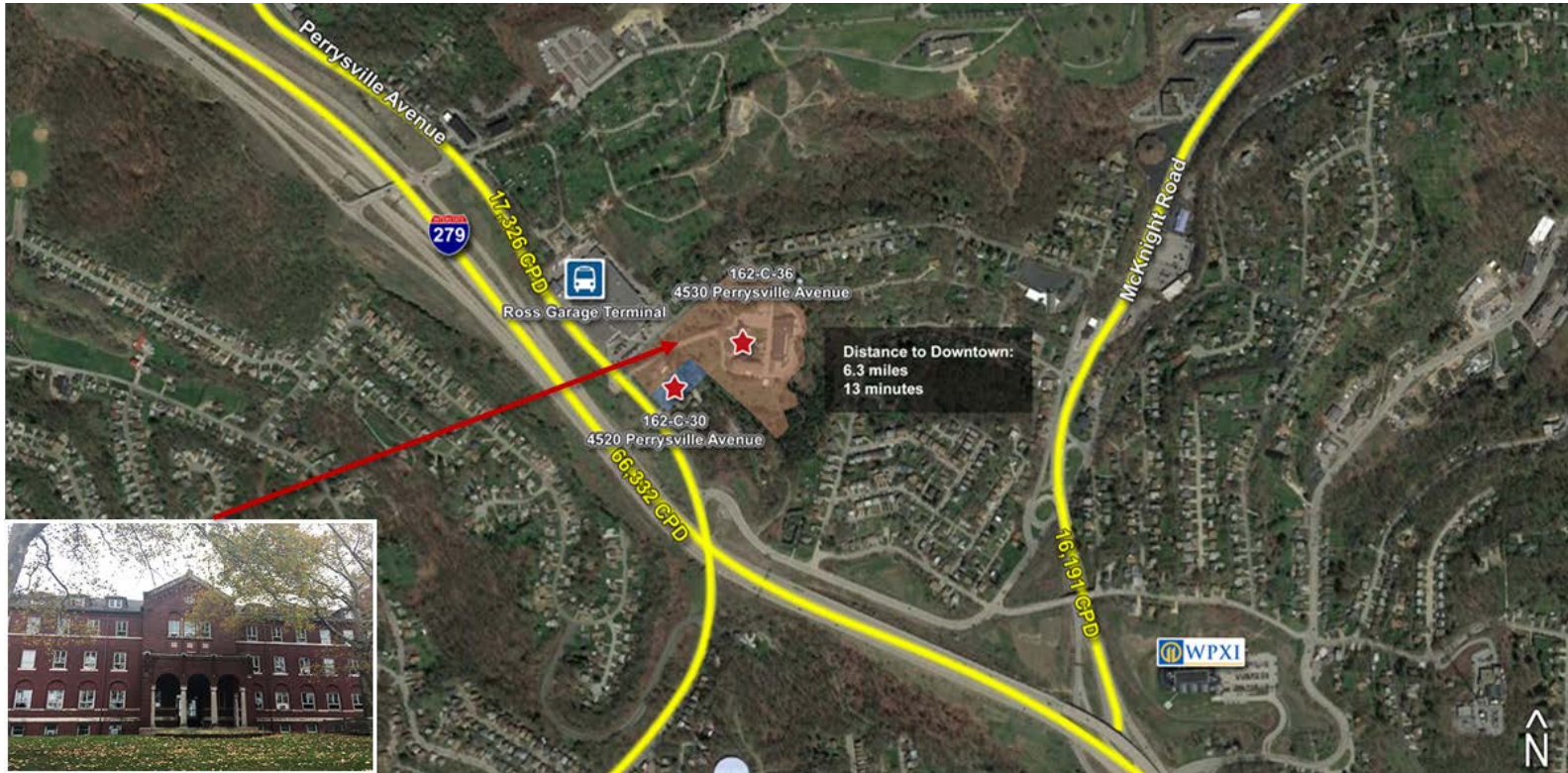


For Sale

4520 & 4530 Perrysville Avenue
Ross Township, PA

Redevelopment Opportunity



Property Highlights

- Location:** Just off the Perrysville Avenue exit of I-279 in Ross Township
- Total Acreage:** 11.90 acres (+/-)
- Buildings:**
- Former Monastery – 67,300 s.f.
 - Former school / apartment building – 38,600 s.f.
 - 3 single family homes

- Attributes:**
- Close proximity to the Perrysville Avenue Interchange of I-279
 - Minutes to Pittsburgh's CBD & the Cranberry Interchange of PA Turnpike
 - Utilities on site
 - Access from Perrysville Ave & West View Ave

For more information, contact:

Jordan Phillippi
Vice President
+1 412 208 1400
jordan.phillippi@am.jll.com

Barry Josowitz
Vice President
+1 412 208 1400
barry.josowitz@am.jll.com



Jones Lang LaSalle Brokerage, Inc.

DISCLAIMER

Although information has been obtained from sources deemed reliable, neither Owner nor JLL makes any guarantees, warranties or representations, express or implied, as to the completeness or accuracy as to the information contained herein. Any projections, opinions, assumptions or estimates used are for example only. There may be differences between projected and actual results, and those differences may be material. The Property may be withdrawn without notice. Neither Owner nor JLL accepts any liability for any loss or damage suffered by any party resulting from reliance on this information. If the recipient of this information has signed a confidentiality agreement regarding this matter, this information is subject to the terms of that agreement. ©2018 Jones Lang LaSalle IP, Inc. All rights reserved.