

330

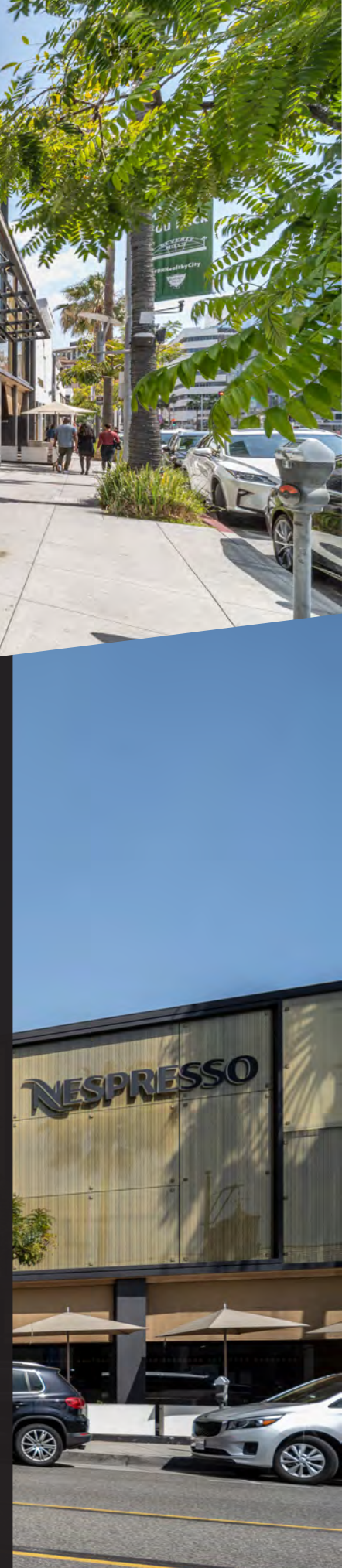
N Beverly Drive

BEVERLY HILLS

high street retail



7,300 sf lease
opportunity



property features

Size: **7,300** 5,911 RSF (Ground)
RSF (Approx.) 1,385 RSF (Basement)

Rent: **Upon request**

Term: **Upon request**

- » Neighboring tenants include: Lululemon, Sandro, Maje, Diptyque, Pottery Barn, & Other Stories, Sephora, Laduree, AG Jeans, Scotch & Soda, COS, IRO, MAC Cosmetics
- » Heart of the Beverly Hills Golden Triangle: Tremendous frontage in the center of the hottest block on North Beverly Drive

consumer profile



272,911
Population



\$2.1B+
Consumer Spending
on Apparel, Food &
Services



\$910,140
Avg Household
Net Worth

11,000+
Local Businesses

20%
of all retail stores
in the area



market overview

Beverly Hills boasts one of the most revered and coveted retail locales in, not only the United States, but the world. There are very few retail locations like Rodeo Drive and Brighton Way across the globe. The strength of the real estate in Beverly Hills and its access to the world's most affluent consumers, living both locally and abroad, ensures that Brighton Way should be seen by the highest quality retailers and related occupiers.

NOTABLE STREETS

N. Rodeo Drive • Brighton Way • N. Canon Drive • N. Beverly Drive • Two Rodeo Drive • Dayton Way
• Wilshire Blvd. • S. Santa Monica Blvd.

POINTS OF INTEREST INCLUDE

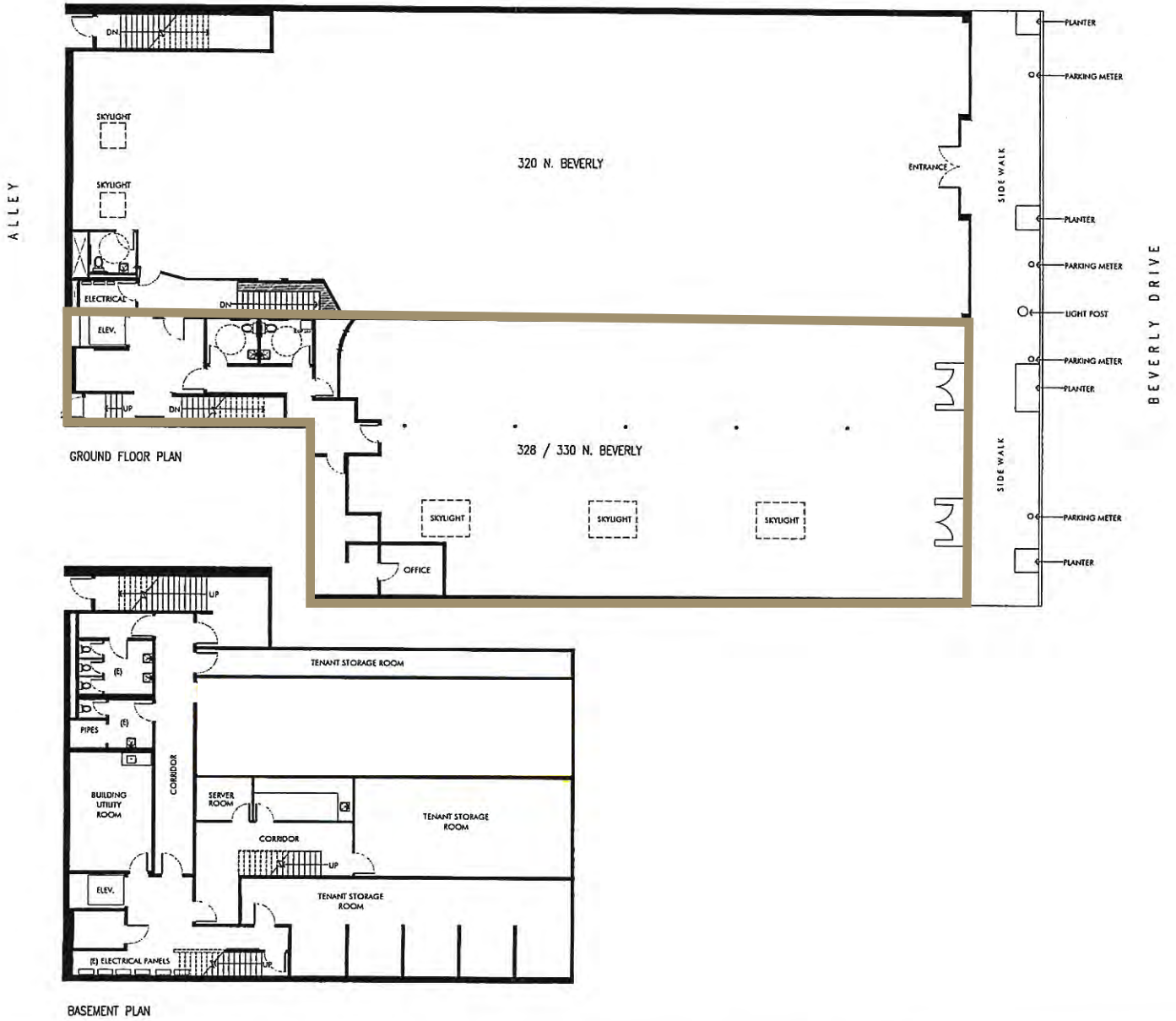
Intermix
Planet Blue
Alice + Olivia
Nespresso
Sandro
Maje
IRO
Schutz

Lululemon
Pottery Barn
GEARY's Beverly Hills
Scotch & Soda
Williams-Sonoma
TASCHEN
Djula
Il Pastaio

Il Fornaio
e. Baldi
Mr. Chow
Louis Vuitton
Barney's New York
Neiman Marcus
Saks Fifth Avenue
Montage Hotel

Hermes
Chanel
Burberry
Bvlgari
Tom Ford
Balenciaga
The Luxe Hotel
Gucci

site map



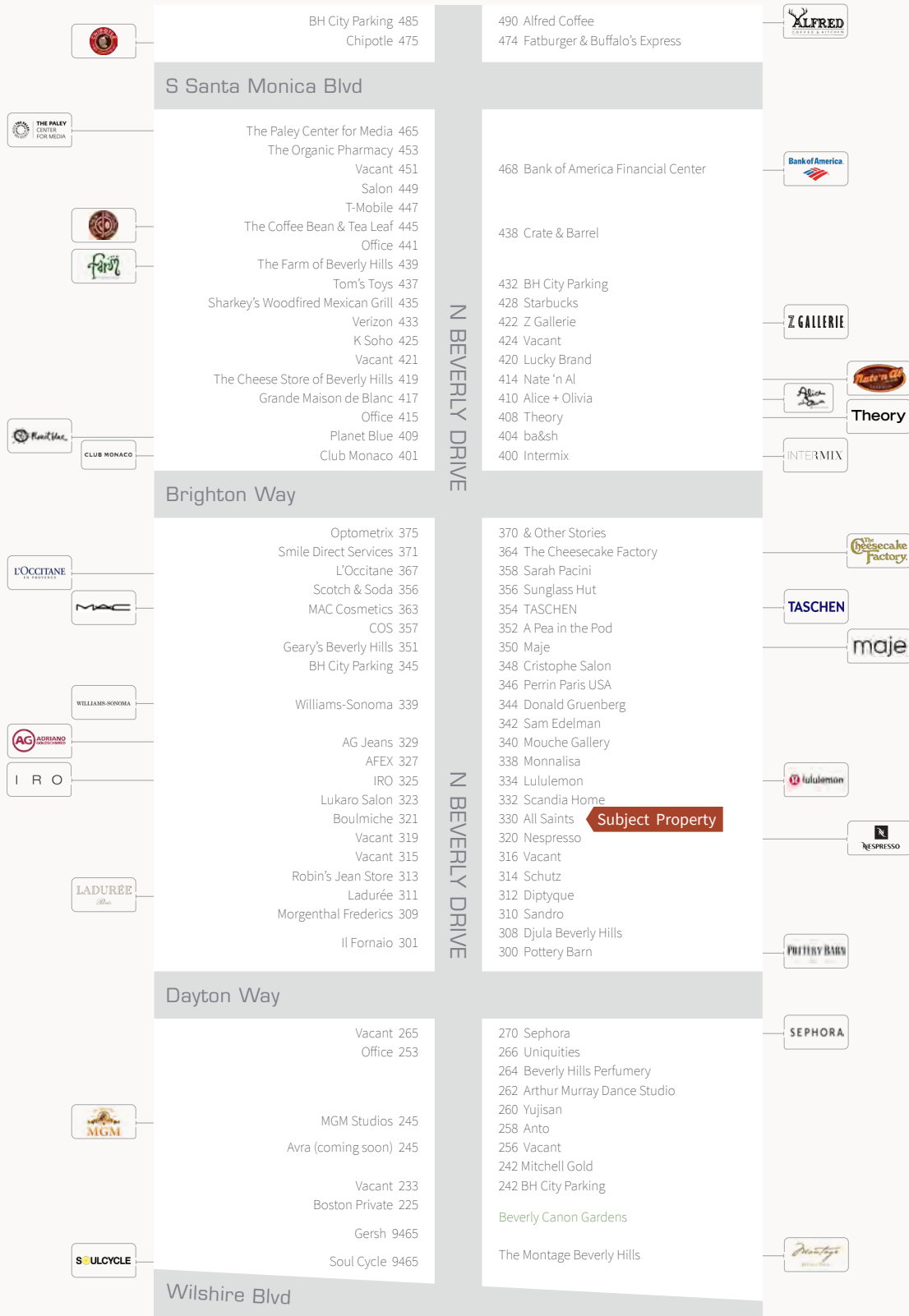


high street
neighbors



330
North Beverly Drive | BEVERLY HILLS

location map





SCANDIA

ALLSAINTS

For Sale

WE CAN'T WAIT TO Welcome YOU BACK

N

For Sale

NESPRES WE HAVE NO OTHER MEETING PLACE. COME MEET US AT NEW LOCATION 800 N. UNIVERSITY C.

50



For more information, please contact:

HOUMAN MAHBOUBI

Executive Vice President, Retail

Lic #01450237

+1 310 595 3621

Houman.Mahboubi@am.jll.com

jllretail.com

Although information has been obtained from sources deemed reliable, Owner, Jones Lang LaSalle, and/or their representatives, brokers or agents make no guarantees as to the accuracy of the information contained herein, and offer the Property without express or implied warranties of any kind. The Property may be withdrawn without notice. If the recipient of this information has signed a confidentiality agreement regarding this matter, this information is subject to the terms of that agreement. ©2018. Jones Lang LaSalle. All rights reserved.