

131

EIGHTH AVENUE
CHELSEA RETAIL



FORMER DUANE READE STORE #14421

location

131 Eighth Avenue
Between West 16th and 17th Streets

size

Ground Floor	6,710 sf
Lower Level	9,305 sf
Total	16,015 sf

asking rent

Upon request

frontage

72 ft on Eighth Avenue

possession

Immediate

term

11/30/2029

comments

- Adjacent to the Google Headquarters
- Steps from the 14th Street Station servicing the **A C E L** with a 14,324,670 annual

neighboring retail



**BODEGA
NEGRA**

som bo ASIAN
FUSION
CUISINE



GNC

michael riley

+1 212 812 5901 | michael.riley@jll.com

patrick a. smith

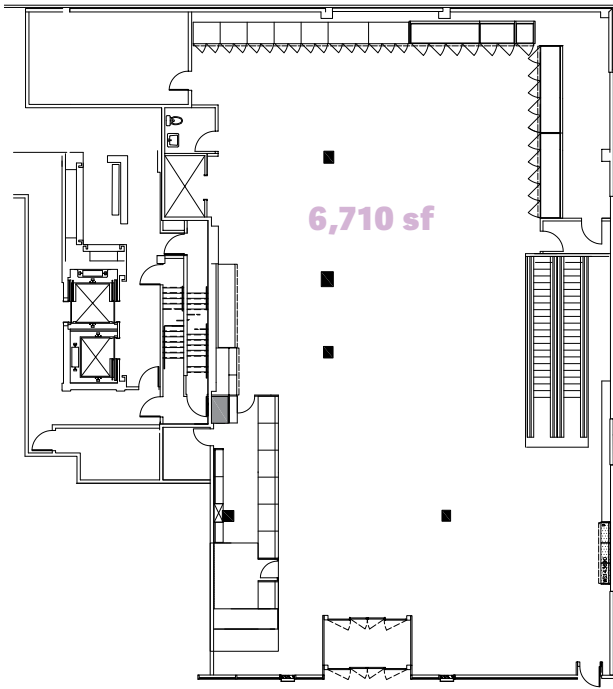
+1 212 812 5888 | patricka.smith@jll.com



131

EIGHTH AVENUE
CHELSEA RETAIL

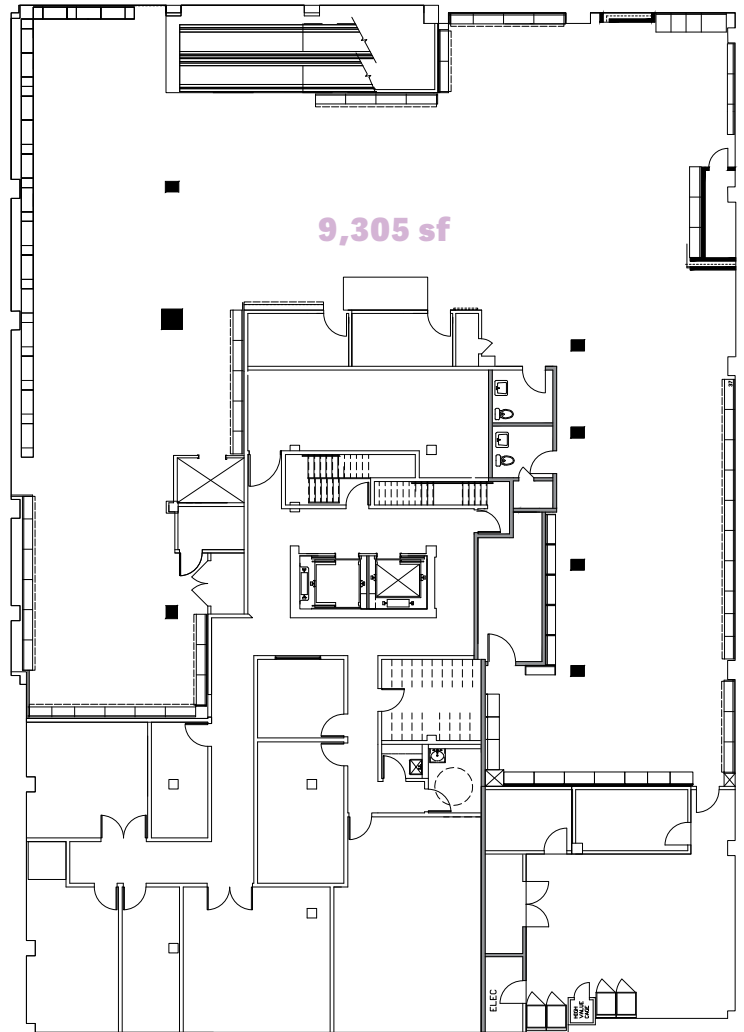
ground floor



6,710 sf

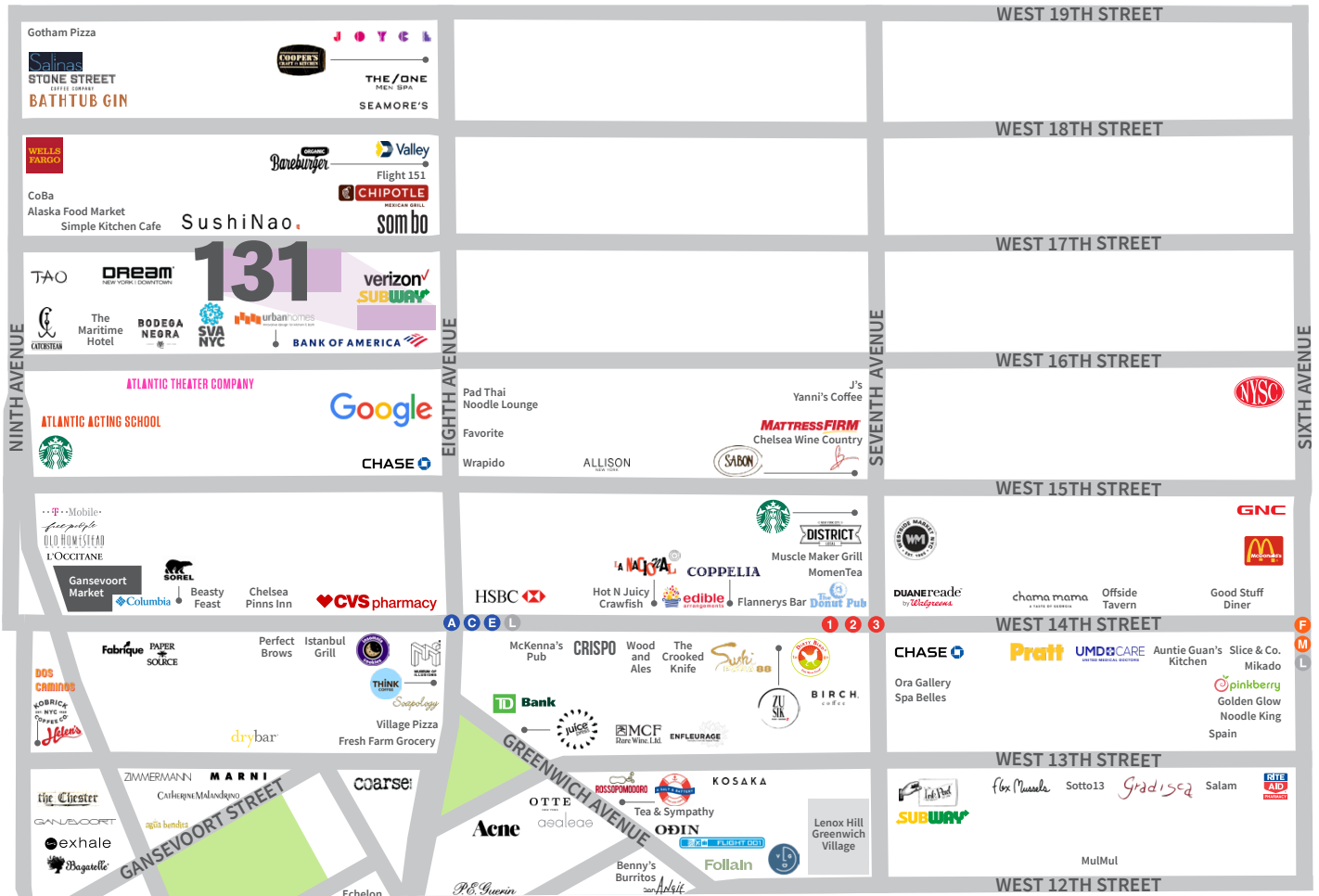
EIGHTH AVENUE

lower level



9,305 sf





\$116,137

median income

21,594

area employees

14,070

area residents

926,000

total office sf

*within a 1/4 mile radius

DISCLAIMER